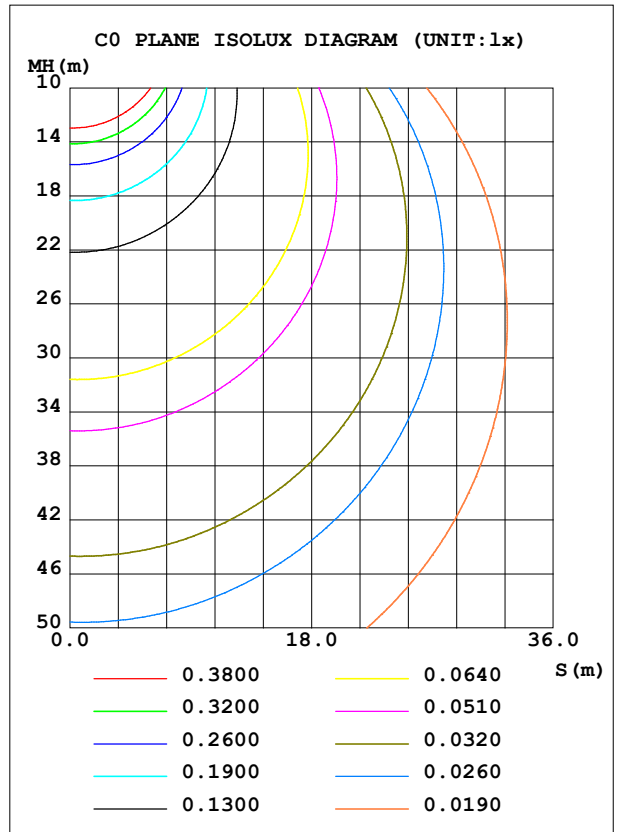
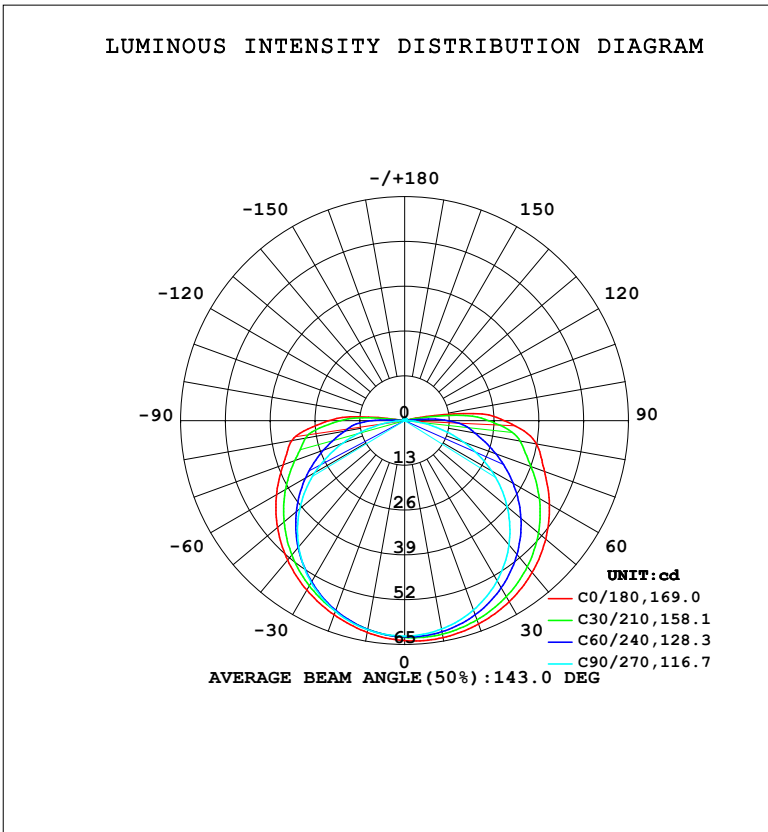


LUMINAIRE PHOTOMETRIC TEST REPORT

NAME: LED Strip	TYPE: Indoor lighting	WEIGHT: 75g
SPEC.: COB LED	DIM.: 500*8*1.9CM	SERIAL No.: 20240317001
MFR.: Hide-a-lite	SUR.: 500*8CM	Shielding Angle:

DATA OF LAMP		PHOTOMETRIC DATA			
WW-FLS100DEBWW480B-24 (WCP) -UR-SL-EP		Imax (cd)	64.27	S/MH (C0/180)	1.33
NOMINAL POWER (W)	2.38762	LOR (%)	100.0	S/MH (C90/270)	1.29
RATED VOLTAGE (V)	DC 24V	TOTAL FLUX (lm)	257.69	η UP, DN (C0-180)	2.5, 47.5
NOMINAL FLUX (lm)	257.69	CIE CLASS	DIRECT	η UP, DN (C180-360)	2.4, 47.6
LAMPS INSIDE	1	η up (%)	4.9	CIBSE SHR NOM	1.50
TEST VOLTAGE (V)	DC 24V	η down (%)	95.1	CIBSE SHR MAX	1.55



C Range: 0 - 360DEG
 C Interval: 15.0DEG
 Test Speed: HIGH
 Temperature: 25.3°C
 Operators: DAMIN
 Test Date: 2024-03-17

γ Range: 0 - 180DEG
 γ Interval: 1.0DEG
 Test System: EVERFINE GO-2000B_V1 SYSTEM V2.00.471
 Humidity: 65.0%
 Test Distance: 4.880m [K=1.0000]
 Remarks:

ZONAL FLUX DIAGRAM

ZONAL FLUX DIAGRAM:

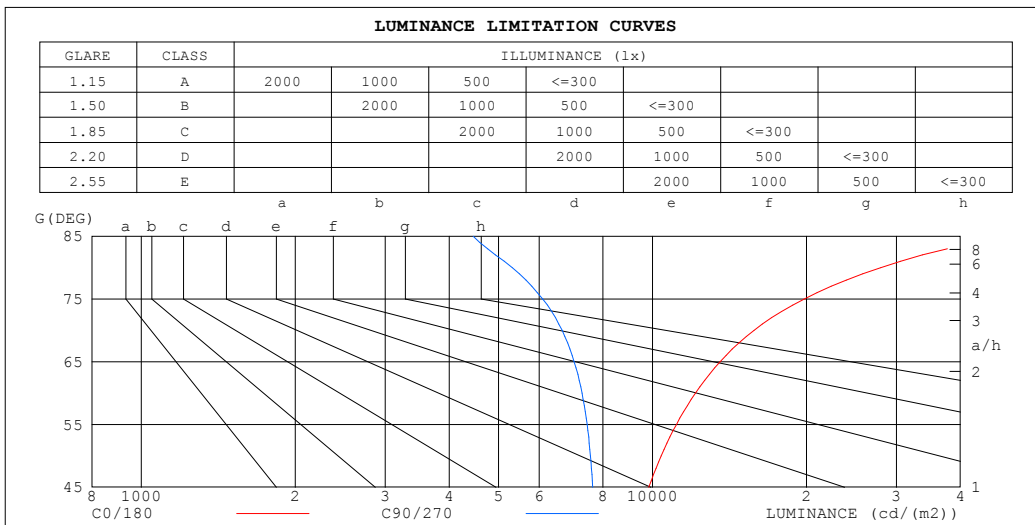
γ	C0	C45	C90	C135	C180	C225	C270	C315	γ	Φ zone	Φ total	%lum,lamp
10	63.97	62.57	61.46	61.52	62.42	61.39	61.66	62.91	0- 10	5.982	5.982	2.32,2.32
20	62.81	60.77	58.50	58.58	59.96	58.53	58.89	61.26	10- 20	17.32	23.30	9.04,9.04
30	60.71	57.58	53.71	54.52	56.81	54.49	54.26	58.23	20- 30	26.90	50.20	19.5,19.5
40	57.56	53.14	47.13	49.34	52.87	49.38	47.85	53.95	30- 40	33.84	84.04	32.6,32.6
50	53.46	47.63	38.87	43.28	48.21	43.36	39.76	48.51	40- 50	37.49	121.5	47.2,47.2
60	48.54	41.21	29.12	36.58	42.99	36.72	30.06	42.15	50- 60	37.62	159.2	61.8,61.8
70	43.21	34.34	18.21	29.83	37.53	29.86	19.06	35.35	60- 70	34.47	193.6	75.1,75.1
80	38.84	28.36	7.389	24.37	33.27	24.13	7.841	29.34	70- 80	29.24	222.9	86.5,86.5
90	28.94	19.30	0.7158	14.36	22.09	14.47	0.6038	17.53	80- 90	22.20	245.1	95.1,95.1
100	8.873	2.351	0.2945	0.5492	1.417	0.5463	0.3026	2.206	90-100	9.401	254.5	98.7,98.7
110	0.5373	0.4086	0.3421	0.4179	0.5052	0.4225	0.3621	0.4541	100-110	0.9048	255.4	99.1,99.1
120	0.4795	0.4610	0.4201	0.4924	0.5576	0.4830	0.4401	0.4609	110-120	0.4431	255.8	99.3,99.3
130	0.5377	0.5320	0.4970	0.5611	0.6065	0.5494	0.5134	0.5296	120-130	0.4566	256.3	99.4,99.4
140	0.5878	0.5925	0.5656	0.6170	0.6472	0.6041	0.5809	0.5878	130-140	0.4414	256.7	99.6,99.6
150	0.6355	0.6484	0.6320	0.6682	0.6845	0.6564	0.6461	0.6413	140-150	0.3921	257.1	99.8,99.8
160	0.6914	0.7008	0.6960	0.7182	0.7276	0.7019	0.7055	0.6949	150-160	0.3134	257.4	99.9,99.9
170	0.7472	0.7508	0.7437	0.7601	0.7660	0.7484	0.7555	0.7380	160-170	0.2056	257.6	100,100
180	0.7764	0.7752	0.7752	0.7776	0.7787	0.7741	0.7776	0.7729	170-180	0.0728	257.7	100,100
DEG	LUMINOUS INTENSITY:cd									UNIT:lm		

C Range: 0 - 360DEG
 C Interval: 15.0DEG
 Test Speed: HIGH
 Temperature:25.3°C
 Operators:DAMIN
 Test Date:2024-03-17

γ Range: 0 - 180DEG
 γ Interval: 1.0DEG
 Test System:EVERFINE GO-2000B_V1 SYSTEM V2.00.471
 Humidity:65.0%
 Test Distance:4.880m [K=1.0000]
 Remarks:

LUMINANCE LIMITATION CURVES

NAME: LED Strip	TYPE: Indoor lighting	WEIGHT: 75g
SPEC.: COB LED	DIM.: 500*8*1.9CM	SERIAL No.: 20240317001
MFR.: Hide-a-lite	SUR.: 500*8CM	Shielding Angle:



LUMINANCE cd/(m2)		
G (DEG)	C0/180	C90/270
85	49892	4459
80	27956	5319
75	19819	6098
70	15792	6654
65	13563	7027
60	12136	7280
55	11136	7447
50	10396	7558
45	9833	7636

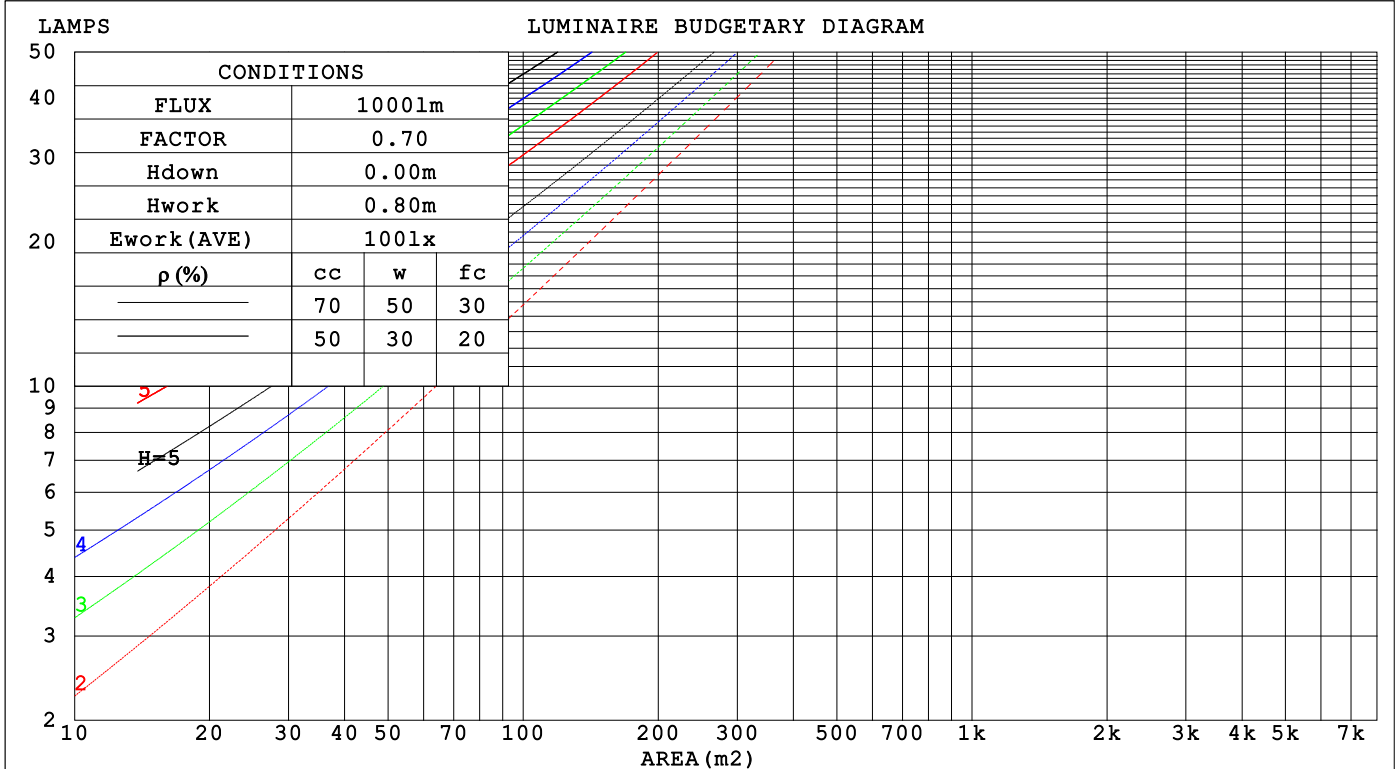
C Range: 0 - 360DEG
 C Interval: 15.0DEG
 Test Speed: HIGH
 Temperature: 25.3°C
 Operators: DAMIN
 Test Date: 2024-03-17

γ Range: 0 - 180DEG
 γ Interval: 1.0DEG
 Test System: EVERFINE GO-2000B_V1 SYSTEM V2.00.471
 Humidity: 65.0%
 Test Distance: 4.880m [K=1.0000]
 Remarks:

CU AND LUMINAIRE BUDGETARY ESTIMATE DIAGRAM

NAME: LED Strip	TYPE: Indoor lighting	WEIGHT: 75g
SPEC.: COB LED	DIM.: 500*8*1.9CM	SERIAL No.: 20240317001
MFR.: Hide-a-lite	SUR.: 500*8CM	Shielding Angle:

pcc	80%			70%			50%			30%			10%			0
pw	50%	30%	10%	50%	30%	10%	50%	30%	10%	50%	30%	10%	50%	30%	10%	0
pfc	20%			20%			20%			20%			20%			0
RCR	RCR:Room Cavity Ratio						Coefficients of Utilization(CU)									
0.0	1.18	1.18	1.18	1.15	1.15	1.15	1.08	1.08	1.08	1.03	1.03	1.03	.98	.98	.98	.95
1.0	.98	.92	.87	.95	.90	.85	.89	.85	.81	.85	.81	.78	.80	.77	.75	.72
2.0	.83	.75	.68	.81	.73	.67	.76	.70	.64	.72	.67	.62	.68	.64	.60	.57
3.0	.72	.62	.55	.70	.61	.54	.66	.59	.52	.62	.56	.51	.59	.54	.49	.47
4.0	.63	.53	.46	.61	.52	.45	.58	.50	.44	.55	.48	.43	.52	.46	.41	.39
5.0	.56	.46	.39	.54	.45	.38	.52	.44	.37	.49	.42	.36	.47	.40	.36	.33
6.0	.50	.40	.33	.49	.40	.33	.46	.38	.32	.44	.37	.32	.42	.36	.31	.29
7.0	.45	.36	.29	.44	.35	.29	.42	.34	.28	.40	.33	.28	.38	.32	.27	.25
8.0	.41	.32	.26	.40	.32	.26	.38	.31	.25	.37	.30	.25	.35	.29	.24	.22
9.0	.38	.29	.23	.37	.28	.23	.35	.28	.22	.34	.27	.22	.32	.26	.22	.20
10.0	.35	.26	.21	.34	.26	.21	.33	.25	.20	.31	.25	.20	.30	.24	.20	.18



C Range: 0 - 360DEG
 C Interval: 15.0DEG
 Test Speed: HIGH
 Temperature: 25.3°C
 Operators: DAMIN
 Test Date: 2024-03-17

γ Range: 0 - 180DEG
 γ Interval: 1.0DEG
 Test System: EVERFINE GO-2000B_V1 SYSTEM V2.00.471
 Humidity: 65.0%
 Test Distance: 4.880m [K=1.0000]
 Remarks:

WEC AND CCEC

NAME: LED Strip	TYPE: Indoor lighting	WEIGHT: 75g
SPEC.: COB LED	DIM.: 500*8*1.9CM	SERIAL No.: 20240317001
MFR.: Hide-a-lite	SUR.: 500*8CM	Shielding Angle:

ρ_{CC}	80%			70%			50%			30%			10%			0
ρ_w	50%	30%	10%	50%	30%	10%	50%	30%	10%	50%	30%	10%	50%	30%	10%	0
ρ_{fc}	20%			20%			20%			20%			20%			0
RCR	RCR:Room Cavity Ratio						Wall Exitance Coefficients (WEC)									
0.0																
1.0	.408	.232	.073	.399	.228	.072	.382	.219	.070	.367	.212	.068	.353	.205	.066	
2.0	.351	.192	.059	.343	.189	.058	.328	.183	.057	.315	.176	.055	.302	.171	.054	
3.0	.310	.165	.049	.303	.162	.049	.290	.157	.048	.278	.152	.047	.266	.148	.046	
4.0	.278	.145	.043	.272	.142	.042	.260	.138	.041	.249	.134	.040	.239	.130	.040	
5.0	.252	.129	.037	.247	.127	.037	.236	.123	.036	.226	.119	.035	.217	.116	.035	
6.0	.230	.116	.033	.225	.114	.033	.216	.111	.032	.207	.108	.032	.199	.105	.031	
7.0	.212	.105	.030	.208	.103	.029	.199	.101	.029	.191	.098	.029	.184	.095	.028	
8.0	.196	.096	.027	.192	.095	.027	.185	.092	.026	.177	.090	.026	.171	.088	.025	
9.0	.183	.088	.025	.179	.087	.024	.172	.085	.024	.165	.083	.024	.159	.081	.023	
10.0	.171	.082	.023	.168	.081	.023	.161	.079	.022	.155	.077	.022	.149	.075	.022	

ρ_{CC}	80%			70%			50%			30%			10%			0
ρ_w	50%	30%	10%	50%	30%	10%	50%	30%	10%	50%	30%	10%	50%	30%	10%	0
ρ_{fc}	20%			20%			20%			20%			20%			0
RCR	RCR:Room Cavity Ratio						Ceiling Cavity Exitance Coefficients (CCEC)									
0.0	.228	.228	.228	.195	.195	.195	.133	.133	.133	.076	.076	.076	.024	.024	.024	
1.0	.225	.193	.164	.192	.166	.141	.132	.114	.098	.076	.066	.057	.024	.021	.018	
2.0	.218	.170	.129	.187	.146	.111	.128	.101	.078	.074	.059	.046	.024	.019	.015	
3.0	.210	.153	.107	.180	.132	.093	.124	.092	.065	.072	.053	.038	.023	.017	.013	
4.0	.202	.140	.092	.174	.121	.080	.119	.084	.056	.069	.049	.033	.022	.016	.011	
5.0	.194	.130	.082	.167	.112	.072	.115	.078	.051	.067	.046	.030	.021	.015	.010	
6.0	.186	.122	.075	.160	.105	.066	.111	.074	.046	.064	.043	.028	.021	.014	.009	
7.0	.179	.115	.070	.154	.100	.061	.106	.070	.043	.062	.041	.026	.020	.013	.009	
8.0	.172	.109	.066	.148	.095	.058	.102	.067	.041	.060	.039	.024	.019	.013	.008	
9.0	.166	.104	.063	.143	.091	.055	.099	.064	.039	.058	.038	.023	.019	.012	.008	
10.0	.159	.100	.060	.137	.087	.053	.095	.061	.037	.056	.036	.022	.018	.012	.007	

C Range: 0 - 360DEG
 C Interval: 15.0DEG
 Test Speed: HIGH
 Temperature: 25.3°C
 Operators: DAMIN
 Test Date: 2024-03-17

γ Range: 0 - 180DEG
 γ Interval: 1.0DEG
 Test System: EVERFINE GO-2000B_V1 SYSTEM V2.00.471
 Humidity: 65.0%
 Test Distance: 4.880m [K=1.0000]
 Remarks:

UGR(Unified Glare Rating) Table

NAME: LED Strip	TYPE: Indoor lighting	WEIGHT: 75g
SPEC.: COB LED	DIM.: 500*8*1.9CM	SERIAL No.: 20240317001
MFR.: Hide-a-lite	SUR.: 500*8CM	Shielding Angle:

ceiling/cavity	0.7	0.7	0.5	0.5	0.3	0.7	0.7	0.5	0.5	0.3
walls	0.5	0.3	0.5	0.3	0.3	0.5	0.3	0.5	0.3	0.3
working plane	0.2	0.2	0.2	0.2	0.2	0.2	0.2	0.2	0.2	0.2

Room dimensions	Viewed crosswise					Viewed endwise				
x = 2H y = 2H	26.2	27.8	26.5	28.1	28.4	24.1	25.7	24.5	26.0	26.3
3H	29.0	30.4	29.3	30.8	31.1	25.7	27.2	26.1	27.5	27.9
4H	30.5	31.9	30.9	32.3	32.7	26.3	27.8	26.7	28.1	28.5
6H	32.3	33.6	32.7	34.0	34.4	26.8	28.2	27.2	28.5	28.9
8H	33.3	34.6	33.7	34.9	35.4	27.0	28.3	27.4	28.6	29.0
12H	34.3	35.6	34.8	36.0	36.4	27.0	28.3	27.5	28.7	29.1
4H 2H	26.8	28.3	27.2	28.6	29.0	25.3	26.8	25.7	27.1	27.5
3H	29.9	31.1	30.3	31.5	31.9	27.2	28.5	27.7	28.9	29.3
4H	31.6	32.8	32.1	33.2	33.7	28.1	29.3	28.5	29.7	30.1
6H	33.6	34.7	34.1	35.1	35.6	28.7	29.8	29.2	30.2	30.7
8H	34.7	35.7	35.2	36.2	36.7	29.0	30.0	29.5	30.4	30.9
12H	35.9	36.8	36.4	37.3	37.8	29.1	30.1	29.7	30.5	31.1
8H 4H	32.0	33.0	32.5	33.5	34.0	29.3	30.3	29.8	30.7	31.2
6H	34.3	35.2	34.9	35.7	36.2	30.4	31.2	30.9	31.7	32.2
8H	35.7	36.4	36.2	36.9	37.5	30.8	31.6	31.4	32.1	32.7
12H	37.1	37.8	37.7	38.4	38.9	31.2	31.9	31.8	32.4	33.0
12H 4H	32.1	33.0	32.6	33.5	34.0	29.7	30.6	30.2	31.1	31.6
6H	34.5	35.3	35.0	35.8	36.3	31.0	31.8	31.6	32.3	32.9
8H	35.9	36.6	36.5	37.1	37.7	31.7	32.4	32.3	32.9	33.5

Variations with the observer position at spacings(CIE Pub.117):		
S = 1.0H	+ 0.1 / - 0.1	+ 0.1 / - 0.1
1.5H	+ 0.2 / - 0.3	+ 0.2 / - 0.3
2.0H	+ 0.3 / - 0.4	+ 0.2 / - 0.4

CIE Pub.117, 257.7 lm Total Lamp Luminous Flux Correct (8log(F/F0) = -4.7)
 Area: 0.008 m2

C Range: 0 - 360DEG
 C Interval: 15.0DEG
 Test Speed: HIGH
 Temperature:25.3°C
 Operators:DAMIN
 Test Date:2024-03-17

γ Range: 0 - 180DEG
 γ Interval: 1.0DEG
 Test System:EVERFINE GO-2000B_V1 SYSTEM V2.00.471
 Humidity:65.0%
 Test Distance:4.880m [K=1.0000]
 Remarks:

UTILIZATION FACTORS TABLE

NAME: LED Strip	TYPE: Indoor lighting	WEIGHT: 75g
SPEC.: COB LED	DIM.: 500*8*1.9CM	SERIAL No.: 20240317001
MFR.: Hide-a-lite	SUR.: 500*8CM	Shielding Angle:

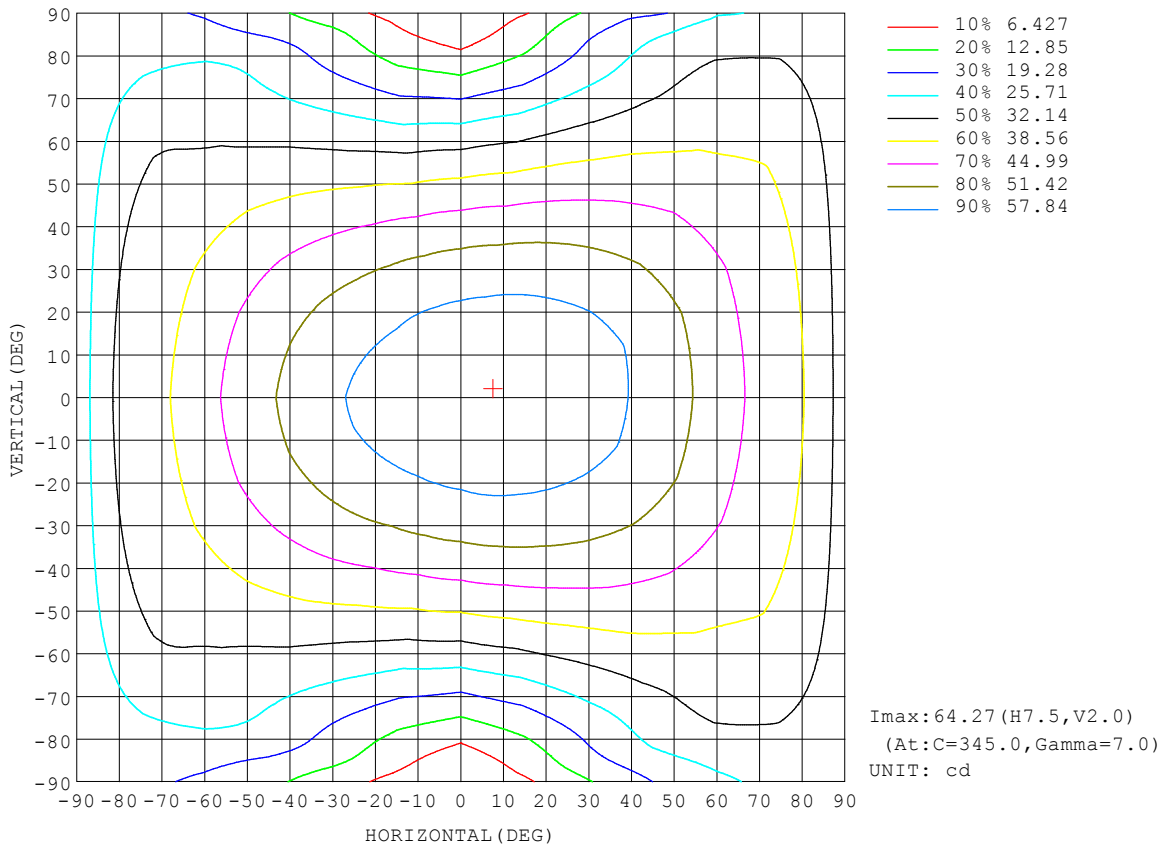
REFLECTANCE										
Ceiling	0.8	0.8	0.8	0.7	0.7	0.7	0.5	0.5	0.5	0
Walls	0.7	0.5	0.3	0.7	0.5	0.3	0.7	0.5	0.3	0
Working plane	0.2	0.2	0.2	0.2	0.2	0.2	0.2	0.2	0.2	0
ROOM INDEX	UTILIZATION FACTORS (PERCENT) $k(RI) \times RCR = 5$									
k = 0.60	51	38	31	50	38	31	49	37	30	23
0.80	60	47	39	59	47	39	57	46	38	31
1.00	68	55	47	66	54	46	64	56	46	38
1.25	75	62	54	73	61	53	70	60	52	44
1.50	80	68	59	78	67	59	74	65	58	49
2.00	87	76	68	85	75	67	81	72	66	56
2.50	92	82	74	89	80	73	85	77	71	60
3.00	95	86	79	93	84	78	88	81	75	65
4.00	100	92	86	97	90	84	92	86	81	70
5.00	103	96	90	100	94	89	95	90	85	74
ROOM INDEX	UF(total)									Direct
According to DIN EN 13032-2 2004			Suspended				SHRNOM = 1.25			

C Range: 0 - 360DEG
 C Interval: 15.0DEG
 Test Speed: HIGH
 Temperature: 25.3°C
 Operators: DAMIN
 Test Date: 2024-03-17

γ Range: 0 - 180DEG
 γ Interval: 1.0DEG
 Test System: EVERFINE GO-2000B_V1 SYSTEM V2.00.471
 Humidity: 65.0%
 Test Distance: 4.880m [K=1.0000]
 Remarks:

ISOCANDELA DIAGRAM

NAME: LED Strip	TYPE: Indoor lighting	WEIGHT: 75g
SPEC.: COB LED	DIM.: 500*8*1.9CM	SERIAL No.: 20240317001
MFR.: Hide-a-lite	SUR.: 500*8CM	Shielding Angle:

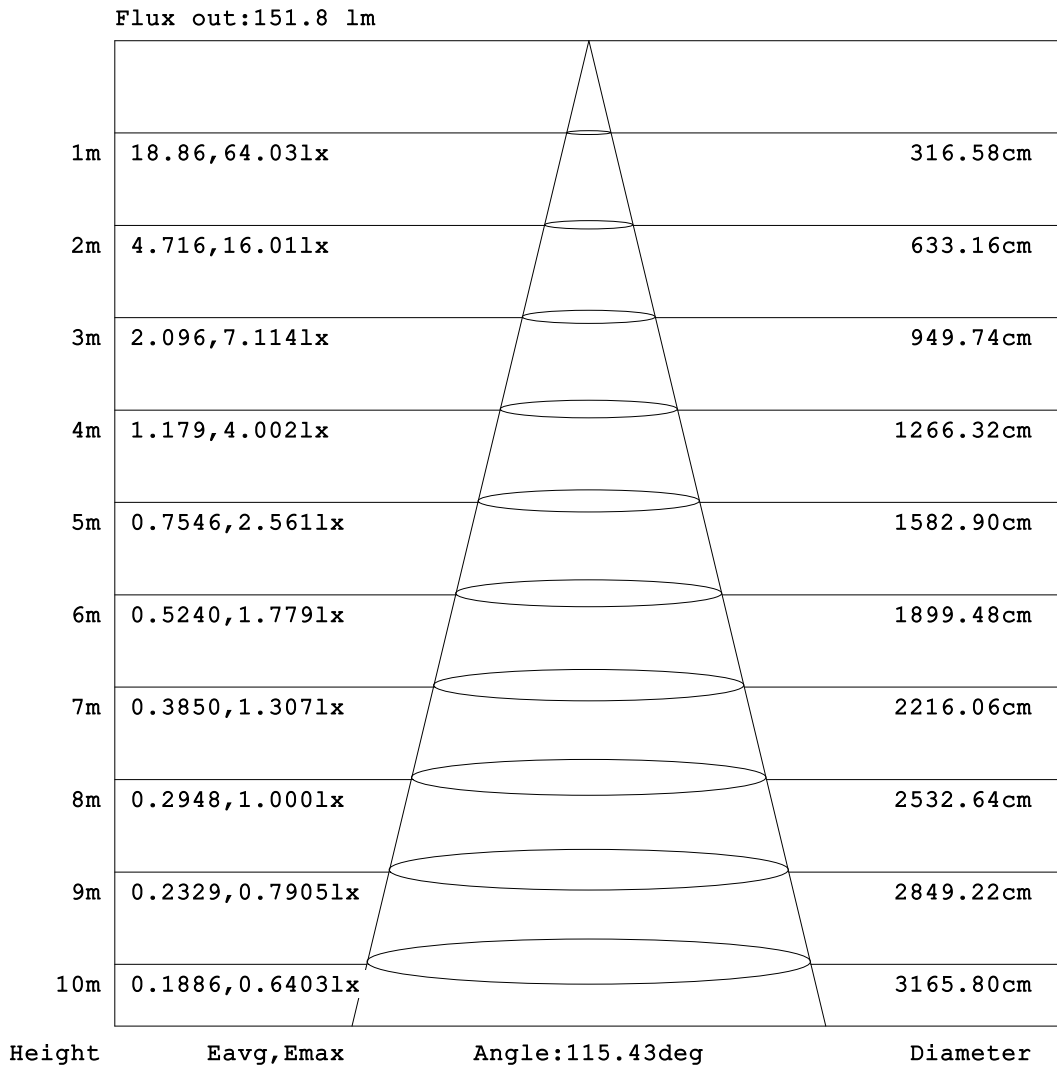


C Range: 0 - 360DEG
 C Interval: 15.0DEG
 Test Speed: HIGH
 Temperature: 25.3°C
 Operators: DAMIN
 Test Date: 2024-03-17

γ Range: 0 - 180DEG
 γ Interval: 1.0DEG
 Test System: EVERFINE GO-2000B_V1 SYSTEM V2.00.471
 Humidity: 65.0%
 Test Distance: 4.880m [K=1.0000]
 Remarks:

AAI Figure

NAME: LED Strip	TYPE: Indoor lighting	WEIGHT: 75g
SPEC.: COB LED	DIM.: 500*8*1.9CM	SERIAL No.: 20240317001
MFR.: Hide-a-lite	SUR.: 500*8CM	Shielding Angle:



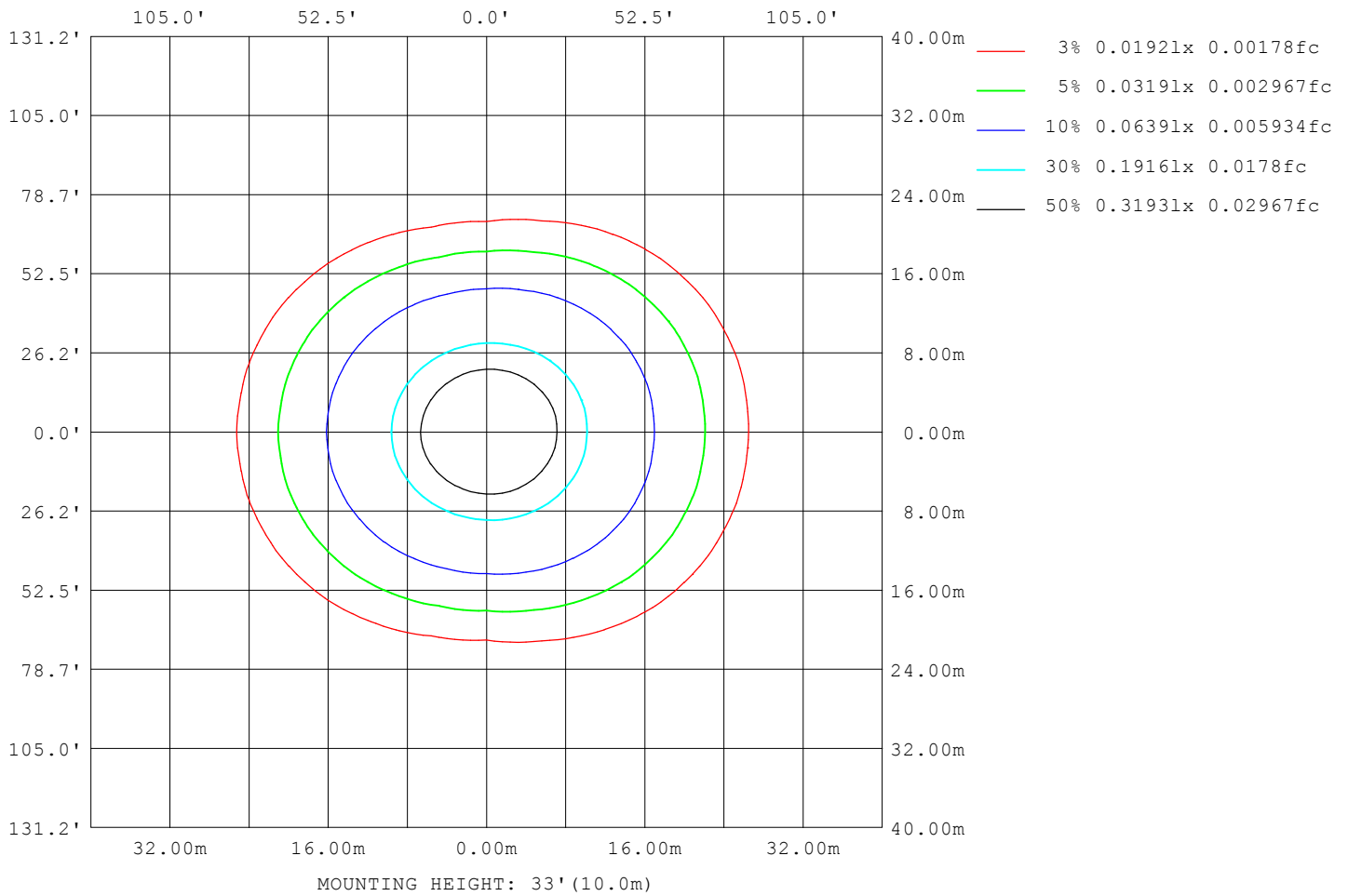
Note: The Curves indicate the illuminated area and the average illumination when the luminaire is at different distance.

C Range: 0 - 360DEG
 C Interval: 15.0DEG
 Test Speed: HIGH
 Temperature: 25.3°C
 Operators: DAMIN
 Test Date: 2024-03-17

γ Range: 0 - 180DEG
 γ Interval: 1.0DEG
 Test System: EVERFINE GO-2000B_V1 SYSTEM V2.00.471
 Humidity: 65.0%
 Test Distance: 4.880m [K=1.0000]
 Remarks:

ISOLUX DIAGRAM

NAME: LED Strip	TYPE: Indoor lighting	WEIGHT: 75g
SPEC.: COB LED	DIM.: 500*8*1.9CM	SERIAL No.: 20240317001
MFR.: Hide-a-lite	SUR.: 500*8CM	Shielding Angle:



C Range: 0 - 360DEG
 C Interval: 15.0DEG
 Test Speed: HIGH
 Temperature: 25.3°C
 Operators: DAMIN
 Test Date: 2024-03-17

γ Range: 0 - 180DEG
 γ Interval: 1.0DEG
 Test System: EVERFINE GO-2000B_V1 SYSTEM V2.00.471
 Humidity: 65.0%
 Test Distance: 4.880m [K=1.0000]
 Remarks:

LED Avg.L Report

NAME: LED Strip	TYPE: Indoor lighting	WEIGHT: 75g
SPEC.: COB LED	DIM.: 500*8*1.9CM	SERIAL No.: 20240317001
MFR.: Hide-a-lite	SUR.: 500*8CM	Shielding Angle:

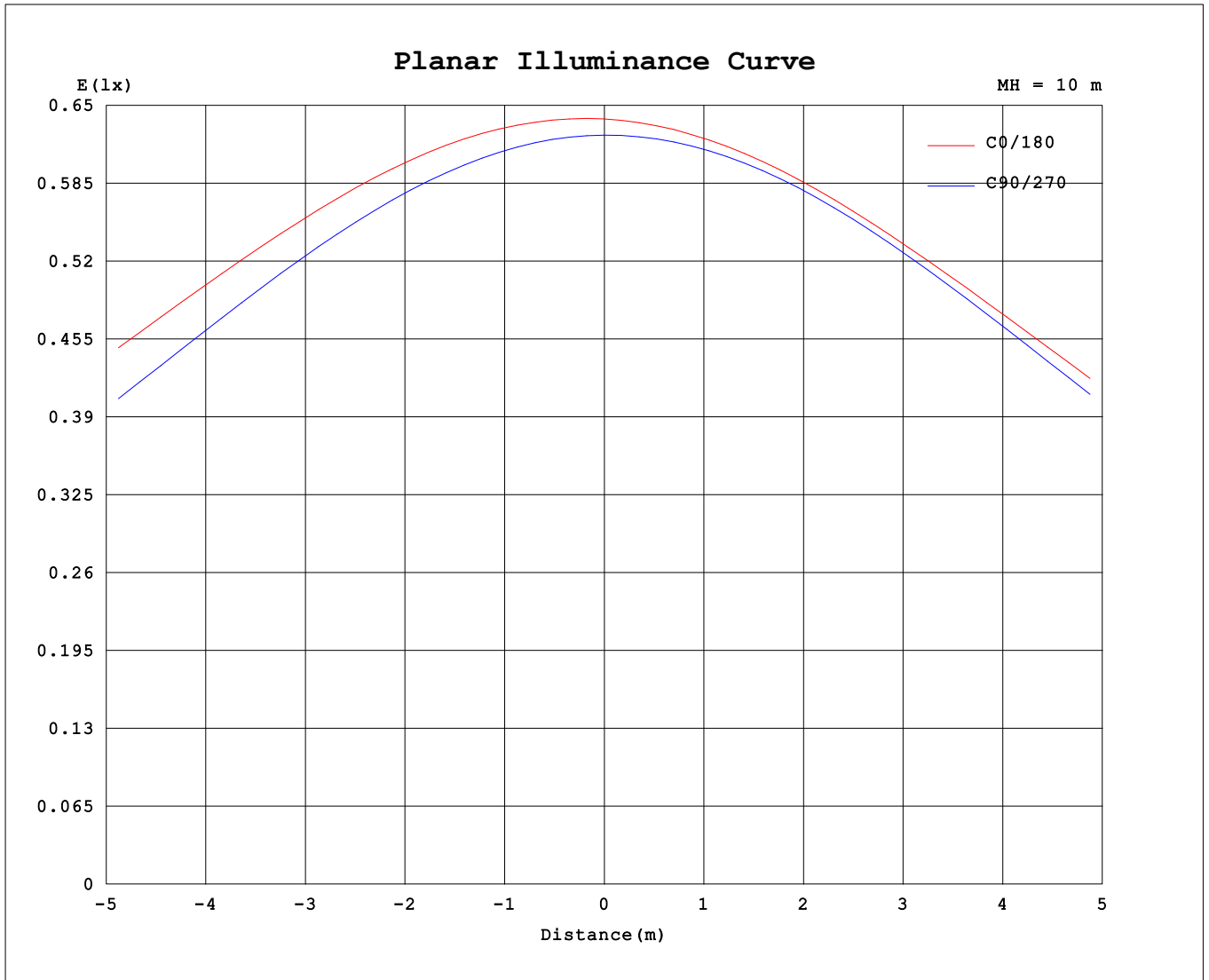
AvgL	cd/m2
L_0~180 (65) av	12731
L_0~180 (75) av	18448
L_0~180 (85) av	45189
L_90~270 (65) av	7164
L_90~270 (75) av	6264
L_90~270 (85) av	4593
L_45 (65) av	10574
L_45 (75) av	14047
L_45 (85) av	33064

Standard: GB/T 29293-2012

C Range: 0 - 360DEG
 C Interval: 15.0DEG
 Test Speed: HIGH
 Temperature:25.3°C
 Operators:DAMIN
 Test Date:2024-03-17

γ Range: 0 - 180DEG
 γ Interval: 1.0DEG
 Test System:EVERFINE GO-2000B_V1 SYSTEM V2.00.471
 Humidity:65.0%
 Test Distance:4.880m [K=1.0000]
 Remarks:

Planar Illuminance Curve



C Range: 0 - 360DEG
 C Interval: 15.0DEG
 Test Speed: HIGH
 Temperature: 25.3°C
 Operators: DAMIN
 Test Date: 2024-03-17

γ Range: 0 - 180DEG
 γ Interval: 1.0DEG
 Test System: EVERFINE GO-2000B_V1 SYSTEM V2.00.471
 Humidity: 65.0%
 Test Distance: 4.880m [K=1.0000]
 Remarks:

LUMINOUS DISTRIBUTION INTENSITY DATA

NAME: LED Strip	TYPE: Indoor lighting	WEIGHT: 75g
SPEC.: COB LED	DIM.: 500*8*1.9CM	SERIAL No.: 20240317001
MFR.: Hide-a-lite	SUR.: 500*8CM	Shielding Angle:

Table--1

UNIT: cd

C (DEG) γ (DEG)	0	15	30	45	60	75	90	105	120	135	150	165	180	195	210	225	240	255	270
0	63.9	63.5	62.9	62.8	62.8	62.7	62.5	62.6	62.8	63.0	63.5	64.0	63.9	63.5	62.9	62.8	62.8	62.7	62.5
5	64.1	63.8	63.1	62.9	62.7	62.5	62.2	62.2	62.3	62.5	62.8	63.3	63.3	62.9	62.4	62.3	62.4	62.4	62.3
10	64.0	63.7	62.9	62.6	62.2	61.9	61.5	61.3	61.3	61.5	61.9	62.4	62.4	62.0	61.5	61.4	61.5	61.6	61.7
15	63.5	63.2	62.4	61.9	61.3	60.8	60.2	60.0	60.0	60.2	60.6	61.1	61.3	60.8	60.3	60.1	60.3	60.3	60.5
20	62.8	62.5	61.5	60.8	60.0	59.2	58.5	58.2	58.2	58.6	59.1	59.7	60.0	59.4	58.9	58.5	58.6	58.6	58.9
25	61.9	61.6	60.4	59.3	58.2	57.2	56.3	56.0	56.1	56.7	57.4	58.2	58.5	57.9	57.2	56.6	56.5	56.5	56.8
30	60.7	60.4	59.0	57.6	56.1	54.8	53.7	53.4	53.6	54.5	55.5	56.4	56.8	56.1	55.4	54.5	54.0	53.9	54.3
35	59.3	58.9	57.3	55.5	53.6	51.9	50.6	50.3	50.8	52.1	53.3	54.4	54.9	54.2	53.3	52.1	51.2	50.9	51.3
40	57.6	57.2	55.4	53.1	50.7	48.6	47.1	46.9	47.7	49.3	50.9	52.3	52.9	52.1	50.9	49.4	48.1	47.4	47.8
45	55.6	55.2	53.2	50.5	47.5	44.9	43.2	43.0	44.3	46.4	48.3	49.9	50.6	49.8	48.4	46.5	44.7	43.6	44.0
50	53.5	52.9	50.7	47.6	44.1	40.9	38.9	38.9	40.7	43.3	45.5	47.4	48.2	47.3	45.7	43.4	41.1	39.5	39.8
55	51.1	50.5	48.0	44.5	40.3	36.5	34.2	34.5	36.8	40.0	42.7	44.8	45.6	44.7	42.9	40.1	37.2	35.0	35.1
60	48.5	47.8	45.2	41.2	36.4	31.8	29.1	29.8	32.9	36.6	39.7	42.1	43.0	42.1	39.9	36.7	33.2	30.3	30.1
65	45.9	45.0	42.1	37.8	32.3	26.9	23.8	25.0	28.9	33.2	36.7	39.2	40.2	39.3	36.9	33.3	29.1	25.4	24.7
70	43.2	42.2	39.1	34.3	28.2	22.0	18.2	20.2	24.9	29.8	33.8	36.5	37.5	36.5	33.9	29.9	25.1	20.4	19.1
75	41.0	39.9	36.3	31.0	24.3	17.1	12.6	15.6	21.2	26.7	31.2	34.4	35.4	34.3	31.3	26.6	21.2	15.6	13.3
80	38.8	37.6	34.0	28.4	20.6	12.6	7.39	11.5	17.9	24.4	29.2	32.2	33.3	32.2	29.2	24.1	17.7	11.2	7.84
85	34.8	33.7	30.2	25.1	17.7	8.83	3.11	8.02	15.0	20.4	24.0	26.7	28.2	27.2	24.8	20.6	14.9	7.52	3.30
90	28.9	27.8	24.4	19.3	12.5	5.38	0.72	4.26	9.36	14.4	18.1	20.8	22.1	21.1	18.6	14.5	9.48	4.04	0.60
95	22.6	21.5	17.6	12.2	4.75	0.53	0.32	0.40	0.74	4.36	7.90	10.9	13.4	12.1	9.61	5.15	1.32	0.36	0.31
100	8.87	8.08	5.19	2.35	0.55	0.36	0.29	0.36	0.48	0.55	0.64	0.76	1.42	0.97	0.66	0.55	0.43	0.34	0.30
105	1.76	1.59	0.92	0.51	0.42	0.33	0.30	0.33	0.40	0.45	0.52	0.55	0.55	0.55	0.50	0.45	0.38	0.34	0.32
110	0.54	0.51	0.48	0.41	0.37	0.36	0.34	0.36	0.37	0.42	0.46	0.49	0.51	0.50	0.47	0.42	0.39	0.36	0.36
115	0.47	0.46	0.44	0.42	0.40	0.40	0.38	0.40	0.41	0.45	0.48	0.51	0.52	0.50	0.49	0.45	0.42	0.39	0.40
120	0.48	0.49	0.47	0.46	0.44	0.43	0.42	0.44	0.45	0.49	0.51	0.54	0.56	0.54	0.53	0.48	0.46	0.43	0.44
125	0.51	0.52	0.50	0.50	0.47	0.47	0.46	0.48	0.49	0.53	0.55	0.57	0.58	0.57	0.56	0.52	0.50	0.47	0.48
130	0.54	0.55	0.54	0.53	0.51	0.51	0.50	0.51	0.52	0.56	0.57	0.60	0.61	0.59	0.58	0.55	0.54	0.51	0.51
135	0.57	0.58	0.57	0.56	0.54	0.54	0.53	0.55	0.56	0.59	0.60	0.62	0.63	0.61	0.61	0.58	0.57	0.54	0.55
140	0.59	0.61	0.59	0.59	0.57	0.58	0.57	0.58	0.59	0.62	0.62	0.64	0.65	0.63	0.63	0.60	0.60	0.58	0.58
145	0.61	0.63	0.61	0.62	0.60	0.61	0.60	0.62	0.62	0.64	0.64	0.66	0.66	0.65	0.65	0.63	0.63	0.61	0.61
150	0.64	0.66	0.64	0.65	0.63	0.64	0.63	0.65	0.64	0.67	0.66	0.68	0.68	0.67	0.68	0.66	0.66	0.64	0.65
155	0.66	0.68	0.67	0.68	0.66	0.67	0.66	0.68	0.68	0.69	0.69	0.70	0.71	0.69	0.70	0.68	0.69	0.67	0.68
160	0.69	0.70	0.69	0.70	0.69	0.70	0.70	0.71	0.70	0.72	0.71	0.72	0.73	0.71	0.72	0.70	0.71	0.70	0.71
165	0.72	0.73	0.72	0.73	0.72	0.73	0.72	0.73	0.72	0.74	0.73	0.74	0.75	0.73	0.74	0.73	0.74	0.72	0.73
170	0.75	0.75	0.74	0.75	0.74	0.75	0.74	0.76	0.75	0.76	0.75	0.76	0.77	0.75	0.76	0.75	0.76	0.74	0.76
175	0.76	0.77	0.76	0.77	0.76	0.77	0.76	0.78	0.76	0.78	0.77	0.78	0.78	0.76	0.77	0.76	0.77	0.76	0.77
180	0.78	0.78	0.78	0.78	0.77	0.78	0.78	0.78	0.77	0.78	0.78	0.78	0.78	0.78	0.78	0.77	0.78	0.78	0.78

C Range: 0 - 360DEG
 C Interval: 15.0DEG
 Test Speed: HIGH
 Temperature: 25.3°C
 Operators: DAMIN
 Test Date: 2024-03-17

γ Range: 0 - 180DEG
 γ Interval: 1.0DEG
 Test System: EVERFINE GO-2000B_V1 SYSTEM V2.00.471
 Humidity: 65.0%
 Test Distance: 4.880m [K=1.0000]
 Remarks:

LUMINOUS DISTRIBUTION INTENSITY DATA

NAME: LED Strip	TYPE: Indoor lighting	WEIGHT: 75g
SPEC.: COB LED	DIM.: 500*8*1.9CM	SERIAL No.: 20240317001
MFR.: Hide-a-lite	SUR.: 500*8CM	Shielding Angle:

Table--2

UNIT: cd

C (DEG) \ γ (DEG)	285	300	315	330	345														
0	62.6	62.8	63.0	63.5	64.0														
5	62.5	62.8	63.2	63.7	64.3														
10	61.9	62.4	62.9	63.6	64.2														
15	60.9	61.6	62.3	63.1	63.8														
20	59.5	60.4	61.3	62.3	63.1														
25	57.5	58.7	59.9	61.2	62.2														
30	55.2	56.7	58.2	59.8	61.0														
35	52.4	54.3	56.2	58.2	59.5														
40	49.2	51.6	53.9	56.3	57.8														
45	45.6	48.5	51.4	54.1	55.8														
50	41.6	45.1	48.5	51.7	53.5														
55	37.3	41.4	45.4	49.0	51.1														
60	32.7	37.5	42.2	46.2	48.4														
65	27.9	33.5	38.8	43.2	45.7														
70	22.9	29.4	35.4	40.1	42.9														
75	18.0	25.4	32.0	37.3	40.5														
80	13.5	21.8	29.3	35.0	38.3														
85	9.74	18.9	26.2	31.6	34.6														
90	5.93	13.9	17.5	25.3	26.3														
95	0.55	6.58	13.6	19.3	19.1														
100	0.39	0.59	2.21	6.41	9.27														
105	0.35	0.42	0.55	1.14	1.95														
110	0.36	0.39	0.45	0.52	0.60														
115	0.40	0.42	0.44	0.48	0.51														
120	0.43	0.45	0.46	0.49	0.50														
125	0.47	0.49	0.50	0.53	0.53														
130	0.51	0.53	0.53	0.55	0.55														
135	0.54	0.56	0.56	0.58	0.58														
140	0.57	0.59	0.59	0.60	0.61														
145	0.60	0.62	0.61	0.63	0.63														
150	0.63	0.65	0.64	0.66	0.65														
155	0.66	0.68	0.67	0.68	0.68														
160	0.69	0.70	0.69	0.71	0.70														
165	0.72	0.73	0.72	0.73	0.72														
170	0.74	0.75	0.74	0.75	0.74														
175	0.76	0.77	0.76	0.77	0.77														
180	0.78	0.78	0.77	0.78	0.78														

C Range: 0 - 360DEG
 C Interval: 15.0DEG
 Test Speed: HIGH
 Temperature:25.3°C
 Operators:DAMIN
 Test Date:2024-03-17

γ Range: 0 - 180DEG
 γ Interval: 1.0DEG
 Test System:EVERFINE GO-2000B_V1 SYSTEM V2.00.471
 Humidity:65.0%
 Test Distance:4.880m [K=1.0000]
 Remarks: