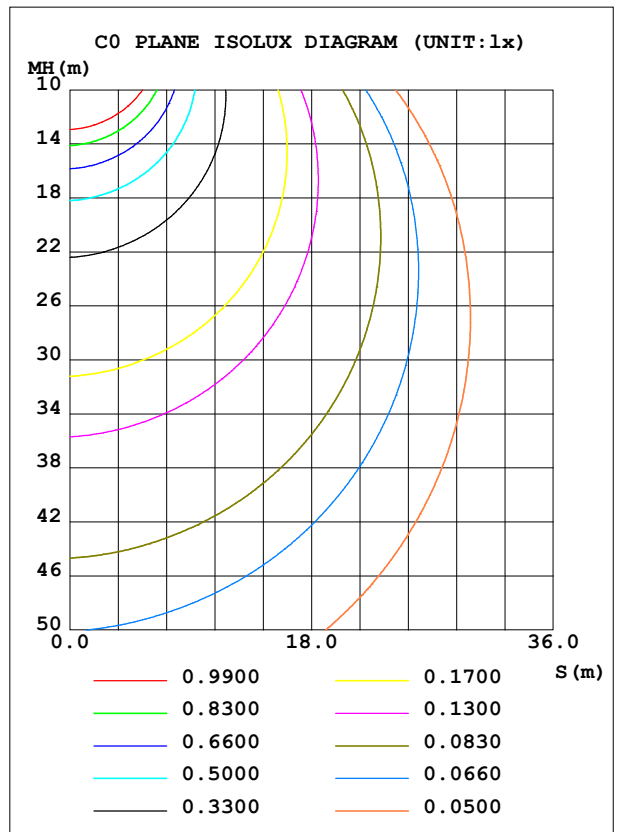
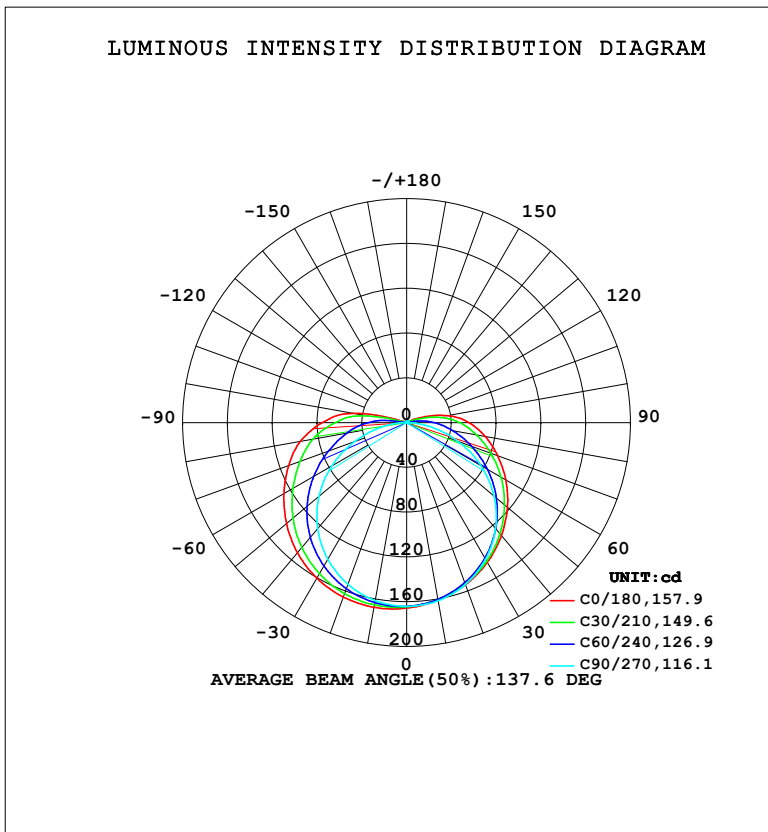


LUMINAIRE PHOTOMETRIC TEST REPORT

NAME: LED Strip	TYPE: Indoor lighting	WEIGHT: 20g
SPEC.: LED	DIM.: 1000*8*2.8MM	SERIAL No.: 20230814054
MFR.: EVERFINE	SUR.: 1000*8MM	Shielding Angle:

DATA OF LAMP		PHOTOMETRIC DATA			
MODEL(WCP) -UR-SK-CV-HE-EP-GEL		Eff: 134.28 lm/W			
NOMINAL POWER(W)		Imax (cd)	167.5	S/MH(C0/180)	1.45
RATED VOLTAGE(V)		LOR(%)	100.0	S/MH(C90/270)	1.28
NOMINAL FLUX(lm)		TOTAL FLUX(lm)	674.16	<input type="checkbox"/> UP, DN(C0-180)	3.7,45.9
LAMPS INSIDE		CIE CLASS	DIRECT	<input type="checkbox"/> UP, DN(C180-360)	3.7,46.7
TEST VOLTAGE(V)		<input type="checkbox"/> up (%)	7.4	CIBSE SHR NOM	1.50
		<input type="checkbox"/> down (%)	92.6	CIBSE SHR MAX	1.55



C Range: 0 - 360DEG
 C Interval: 15.0DEG
 Test Speed: HIGH
 Temperature: 25.3°C
 Operators: DAMIN
 Test Date: 2023-08-29

Range: 0 - 180DEG
 Interval: 1.0DEG
 Test System: EVERFINE GO-2000B_V1 SYSTEM V2.00.471
 Humidity: 65.0%
 Test Distance: 4.880m [K=1.0000]
 Remarks:

ZONAL FLUX DIAGRAM

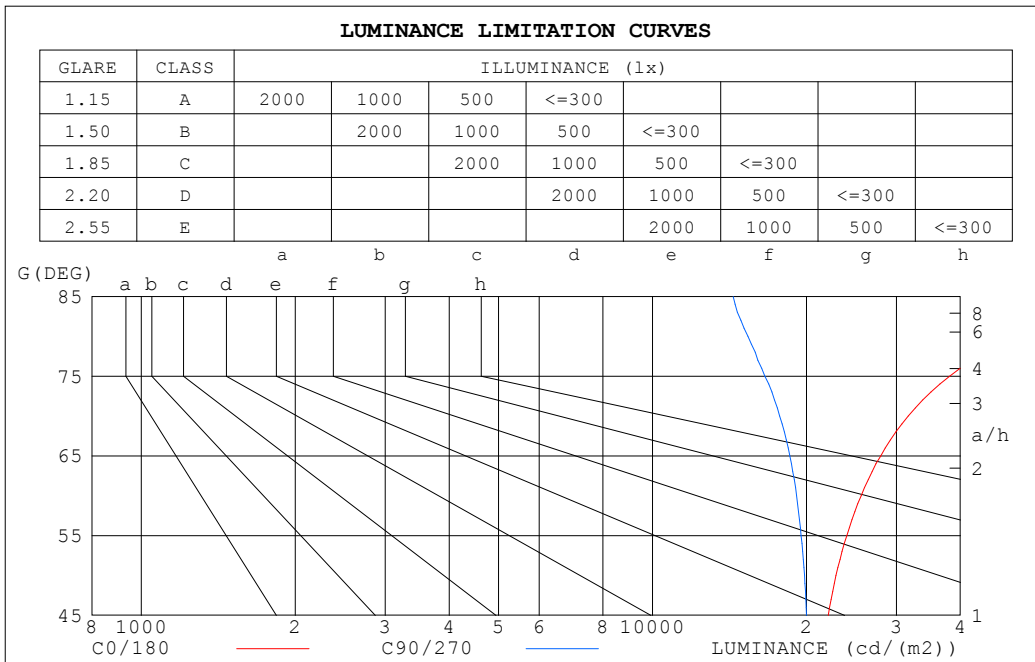
ZONAL FLUX DIAGRAM:

☐	C0	C45	C90	C135	C180	C225	C270	C315	☐	☐ zone	☐ total	%lum,lamp
10	161.0	160.2	161.5	164.8	167.5	164.2	161.4	160.5	0- 10	15.63	15.63	2.32,2.32
20	154.0	152.6	153.7	160.8	165.7	160.1	153.6	152.6	10- 20	45.27	60.90	9.03,9.03
30	144.1	141.5	141.0	152.8	160.5	151.8	140.9	141.3	20- 30	70.24	131.1	19.5,19.5
40	131.7	127.0	123.5	140.9	151.8	139.8	123.7	126.6	30- 40	87.94	219.1	32.5,32.5
50	117.5	109.9	101.9	125.7	140.1	124.7	102.3	109.4	40- 50	96.68	315.8	46.8,46.8
60	102.3	91.10	76.53	108.0	126.6	107.2	77.26	90.58	50- 60	96.02	411.8	61.1,61.1
70	86.57	72.01	48.51	89.65	112.2	89.10	49.30	71.77	60- 70	86.92	498.7	74,74
80	71.28	53.99	21.36	71.45	96.35	71.68	22.11	53.88	70- 80	71.91	570.6	84.6,84.6
90	55.77	37.69	1.788	50.14	75.62	50.92	2.485	36.68	80- 90	53.35	624.0	92.6,92.6
100	36.64	19.23	0.8160	18.07	48.68	17.86	0.8578	18.91	90-100	32.36	656.3	97.4,97.4
110	13.92	2.936	0.9397	1.382	3.586	1.410	0.9952	4.512	100-110	10.48	666.8	98.9,98.9
120	3.178	1.397	1.132	1.278	1.514	1.212	1.194	1.403	110-120	2.344	669.1	99.3,99.3
130	1.608	1.521	1.321	1.408	1.424	1.358	1.374	1.526	120-130	1.285	670.4	99.4,99.4
140	1.666	1.627	1.490	1.527	1.520	1.501	1.539	1.651	130-140	1.165	671.6	99.6,99.6
150	1.761	1.741	1.677	1.678	1.641	1.646	1.695	1.766	140-150	1.028	672.6	99.8,99.8
160	1.870	1.858	1.825	1.828	1.782	1.789	1.840	1.877	150-160	0.8199	673.4	99.9,99.9
170	1.961	1.957	1.947	1.963	1.926	1.919	1.960	1.977	160-170	0.5368	674.0	100,100
180	2.012	2.011	2.018	2.035	2.011	2.007	2.022	2.035	170-180	0.1896	674.2	100,100
DEG	LUMINOUS INTENSITY:cd									UNIT:lm		

C Range: 0 - 360DEG
 C Interval: 15.0DEG
 Test Speed: HIGH
 Temperature:25.3°C
 Operators:DAMIN
 Test Date:2023-08-29

☐ Range: 0 - 180DEG
 ☐ Interval: 1.0DEG
 Test System:EVERFINE GO-2000B_V1 SYSTEM V2.00.471
 Humidity:65.0%
 Test Distance:4.880m [K=1.0000]
 Remarks:

LUMINANCE LIMITATION CURVES



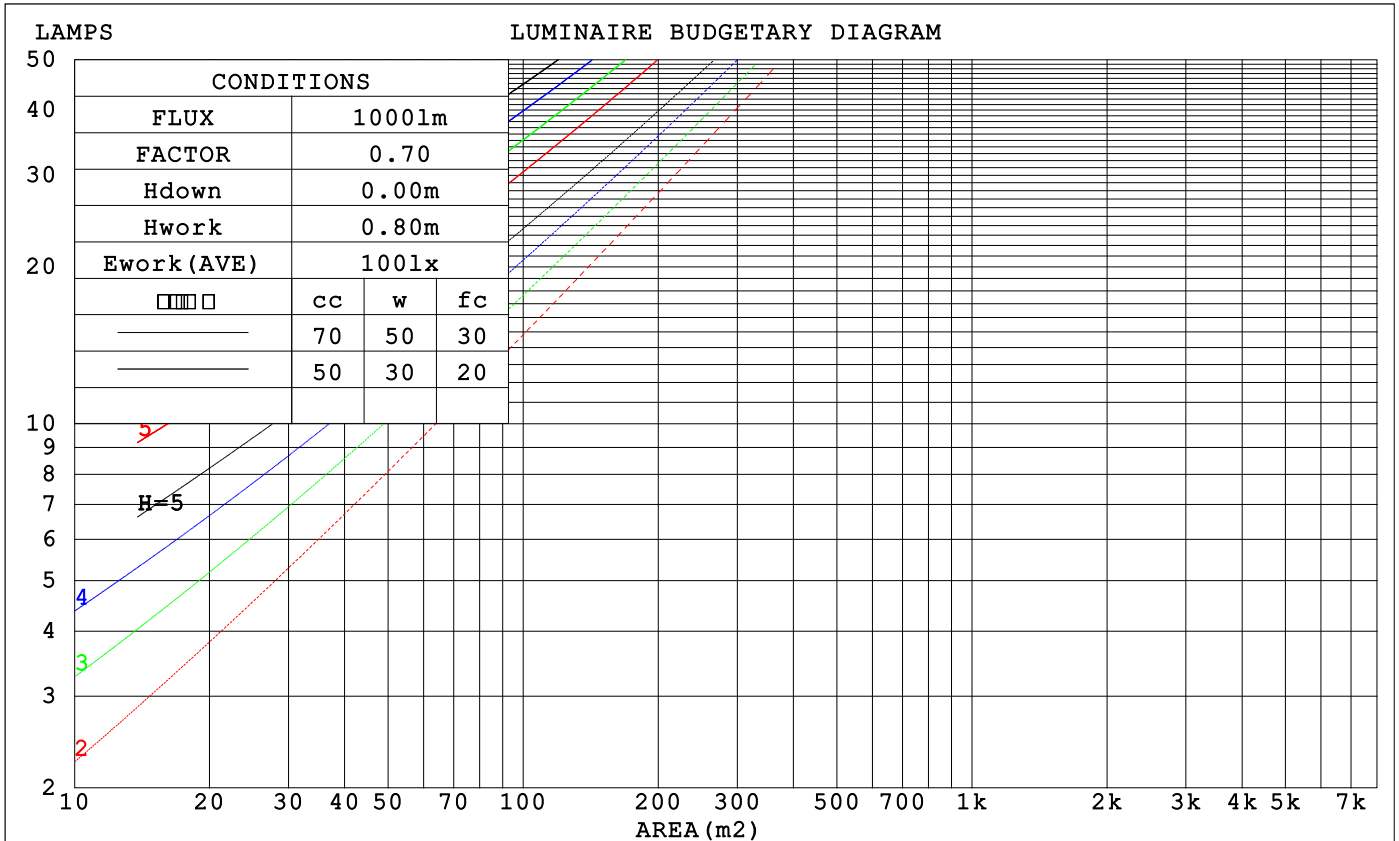
LUMINANCE cd/(m2)		
G (DEG)	C0/180	C90/270
85	91193	14376
80	51313	15377
75	38110	16587
70	31638	17730
65	27939	18568
60	25584	19132
55	23981	19532
50	22850	19820
45	22064	20016

C Range: 0 - 360DEG
 C Interval: 15.0DEG
 Test Speed: HIGH
 Temperature: 25.3°C
 Operators: DAMIN
 Test Date: 2023-08-29

Range: 0 - 180DEG
 Interval: 1.0DEG
 Test System: EVERFINE GO-2000B_V1 SYSTEM V2.00.471
 Humidity: 65.0%
 Test Distance: 4.880m [K=1.0000]
 Remarks:

CU AND LUMINAIRE BUDGETARY ESTIMATE DIAGRAM

□cc	80%			70%			50%			30%			10%			0
□w	50%	30%	10%	50%	30%	10%	50%	30%	10%	50%	30%	10%	50%	30%	10%	0
□fc	20%			20%			20%			20%			20%			0
RCR	RCR:Room Cavity Ratio						Coefficients of Utilization(CU)									
0.0	1.17	1.17	1.17	1.14	1.14	1.14	1.07	1.07	1.07	1.01	1.01	1.01	.95	.95	.95	.93
1.0	.98	.92	.87	.94	.89	.85	.89	.85	.81	.83	.80	.77	.79	.76	.73	.71
2.0	.83	.75	.68	.81	.73	.67	.76	.70	.64	.71	.66	.62	.67	.63	.59	.56
3.0	.72	.63	.55	.70	.61	.54	.66	.58	.52	.62	.56	.51	.58	.53	.49	.46
4.0	.63	.54	.46	.61	.52	.45	.58	.50	.44	.55	.48	.42	.51	.46	.41	.38
5.0	.56	.46	.39	.55	.45	.39	.52	.44	.37	.49	.42	.36	.46	.40	.35	.33
6.0	.50	.41	.34	.49	.40	.33	.46	.38	.32	.44	.37	.32	.42	.35	.31	.28
7.0	.45	.36	.30	.44	.35	.29	.42	.34	.28	.40	.33	.28	.38	.32	.27	.25
8.0	.41	.32	.26	.40	.32	.26	.38	.31	.25	.36	.30	.25	.35	.29	.24	.22
9.0	.38	.29	.23	.37	.29	.23	.35	.28	.23	.33	.27	.22	.32	.26	.22	.20
10.0	.35	.27	.21	.34	.26	.21	.32	.25	.20	.31	.25	.20	.30	.24	.20	.18



C Range: 0 - 360DEG
 C Interval: 15.0DEG
 Test Speed: HIGH
 Temperature:25.3°C
 Operators:DAMIN
 Test Date:2023-08-29

□ Range: 0 - 180DEG
 □ Interval: 1.0DEG
 Test System:EVERFINE GO-2000B_V1 SYSTEM V2.00.471
 Humidity:65.0%
 Test Distance:4.880m [K=1.0000]
 Remarks:

WEC AND CCEC

□cc	80%			70%			50%			30%			10%			0
□w	50%	30%	10%	50%	30%	10%	50%	30%	10%	50%	30%	10%	50%	30%	10%	0
□fc	20%			20%			20%			20%			20%			0
RCR	RCR:Room Cavity Ratio						Wall Exitance Coefficients (WEC)									
0.0																
1.0	.396	.225	.071	.387	.221	.070	.369	.212	.068	.352	.203	.065	.337	.195	.063	
2.0	.343	.188	.058	.335	.184	.057	.319	.177	.055	.304	.170	.053	.290	.164	.052	
3.0	.305	.162	.049	.297	.159	.048	.283	.153	.047	.269	.148	.045	.257	.142	.044	
4.0	.274	.142	.042	.267	.140	.041	.254	.135	.040	.242	.130	.039	.231	.125	.038	
5.0	.249	.127	.037	.243	.125	.036	.231	.120	.035	.220	.116	.035	.210	.112	.034	
6.0	.228	.114	.033	.222	.112	.032	.212	.108	.032	.202	.105	.031	.193	.101	.030	
7.0	.210	.104	.029	.205	.102	.029	.195	.099	.028	.186	.096	.028	.178	.092	.027	
8.0	.194	.095	.027	.190	.093	.026	.181	.091	.026	.173	.088	.025	.166	.085	.025	
9.0	.181	.088	.024	.177	.086	.024	.169	.084	.024	.162	.081	.023	.155	.079	.023	
10.0	.169	.081	.023	.166	.080	.022	.158	.078	.022	.152	.075	.021	.145	.073	.021	

□cc	80%			70%			50%			30%			10%			0
□w	50%	30%	10%	50%	30%	10%	50%	30%	10%	50%	30%	10%	50%	30%	10%	0
□fc	20%			20%			20%			20%			20%			0
RCR	RCR:Room Cavity Ratio						Ceiling Cavity Exitance Coefficients (CCEC)									
0.0	.247	.247	.247	.211	.211	.211	.144	.144	.144	.083	.083	.083	.026	.026	.026	
1.0	.244	.213	.185	.208	.182	.159	.143	.126	.110	.082	.073	.064	.026	.023	.021	
2.0	.237	.189	.149	.203	.163	.129	.139	.113	.090	.080	.066	.053	.026	.021	.017	
3.0	.229	.172	.127	.196	.149	.110	.135	.103	.077	.078	.060	.046	.025	.020	.015	
4.0	.221	.160	.113	.190	.138	.098	.130	.096	.069	.075	.056	.041	.024	.018	.013	
5.0	.213	.150	.103	.183	.129	.089	.126	.090	.063	.073	.053	.037	.024	.017	.012	
6.0	.206	.142	.096	.177	.123	.083	.122	.086	.059	.071	.050	.035	.023	.017	.012	
7.0	.198	.135	.090	.171	.117	.079	.118	.082	.056	.068	.048	.033	.022	.016	.011	
8.0	.191	.129	.086	.165	.112	.075	.114	.079	.053	.066	.046	.032	.021	.015	.011	
9.0	.185	.124	.083	.159	.108	.073	.110	.076	.052	.064	.045	.031	.021	.015	.010	
10.0	.179	.120	.081	.154	.104	.070	.107	.073	.050	.062	.043	.030	.020	.014	.010	

C Range: 0 - 360DEG
 C Interval: 15.0DEG
 Test Speed: HIGH
 Temperature:25.3°C
 Operators:DAMIN
 Test Date:2023-08-29

□ Range: 0 - 180DEG
 □ Interval: 1.0DEG
 Test System:EVERFINE GO-2000B_V1 SYSTEM V2.00.471
 Humidity:65.0%
 Test Distance:4.880m [K=1.0000]
 Remarks:

UGR(Unified Glare Rating) Table

ceiling/cavity	0.7	0.7	0.5	0.5	0.3	0.7	0.7	0.5	0.5	0.3
walls	0.5	0.3	0.5	0.3	0.3	0.5	0.3	0.5	0.3	0.3
working plane	0.2	0.2	0.2	0.2	0.2	0.2	0.2	0.2	0.2	0.2
Room dimensions	Viewed crosswise					Viewed endwise				
x = 2H y = 2H	24.8	26.4	25.2	26.7	27.1	23.5	25.1	23.9	25.4	25.8
3H	27.4	28.8	27.8	29.2	29.6	25.1	26.6	25.5	26.9	27.3
4H	28.7	30.1	29.2	30.5	30.9	25.8	27.2	26.2	27.6	28.0
6H	30.2	31.5	30.7	32.0	32.4	26.3	27.6	26.8	28.0	28.5
8H	31.1	32.3	31.5	32.8	33.2	26.5	27.7	26.9	28.2	28.6
12H	32.0	33.2	32.5	33.7	34.2	26.6	27.8	27.1	28.3	28.7
4H 2H	25.5	26.8	25.9	27.2	27.7	24.5	25.9	24.9	26.3	26.7
3H	28.2	29.4	28.7	29.9	30.3	26.4	27.6	26.8	28.0	28.5
4H	29.8	30.9	30.3	31.4	31.9	27.2	28.3	27.7	28.8	29.3
6H	31.5	32.5	32.0	33.0	33.6	27.9	28.9	28.4	29.4	29.9
8H	32.5	33.4	33.0	33.9	34.5	28.2	29.1	28.7	29.6	30.2
12H	33.6	34.5	34.1	35.0	35.6	28.4	29.2	28.9	29.7	30.3
8H 4H	30.2	31.1	30.7	31.6	32.2	28.1	29.0	28.6	29.5	30.1
6H	32.2	33.0	32.8	33.6	34.1	29.1	29.9	29.7	30.5	31.1
8H	33.4	34.1	34.0	34.7	35.3	29.6	30.3	30.1	30.9	31.5
12H	34.7	35.4	35.3	36.0	36.6	30.0	30.6	30.5	31.2	31.8
12H 4H	30.2	31.1	30.8	31.6	32.2	28.3	29.2	28.9	29.7	30.3
6H	32.3	33.1	32.9	33.6	34.2	29.6	30.3	30.2	30.9	31.5
8H	33.6	34.3	34.2	34.8	35.5	30.2	30.8	30.8	31.4	32.1
Variations with the observer position at spacings(CIE Pub.117):										
S = 1.0H	+ 0.1 / - 0.1					+ 0.1 / - 0.1				
1.5H	+ 0.2 / - 0.3					+ 0.2 / - 0.2				
2.0H	+ 0.2 / - 0.4					+ 0.2 / - 0.3				

CIE Pub.117, 674.2 lm Total Lamp Luminous Flux Correct (8log(F/F0) = -1.4)
 Area: 0.008 m2

C Range: 0 - 360DEG
 C Interval: 15.0DEG
 Test Speed: HIGH
 Temperature:25.3°C
 Operators:DAMIN
 Test Date:2023-08-29

Range: 0 - 180DEG
 Interval: 1.0DEG
 Test System:EVERFINE GO-2000B_V1 SYSTEM V2.00.471
 Humidity:65.0%
 Test Distance:4.880m [K=1.0000]
 Remarks:

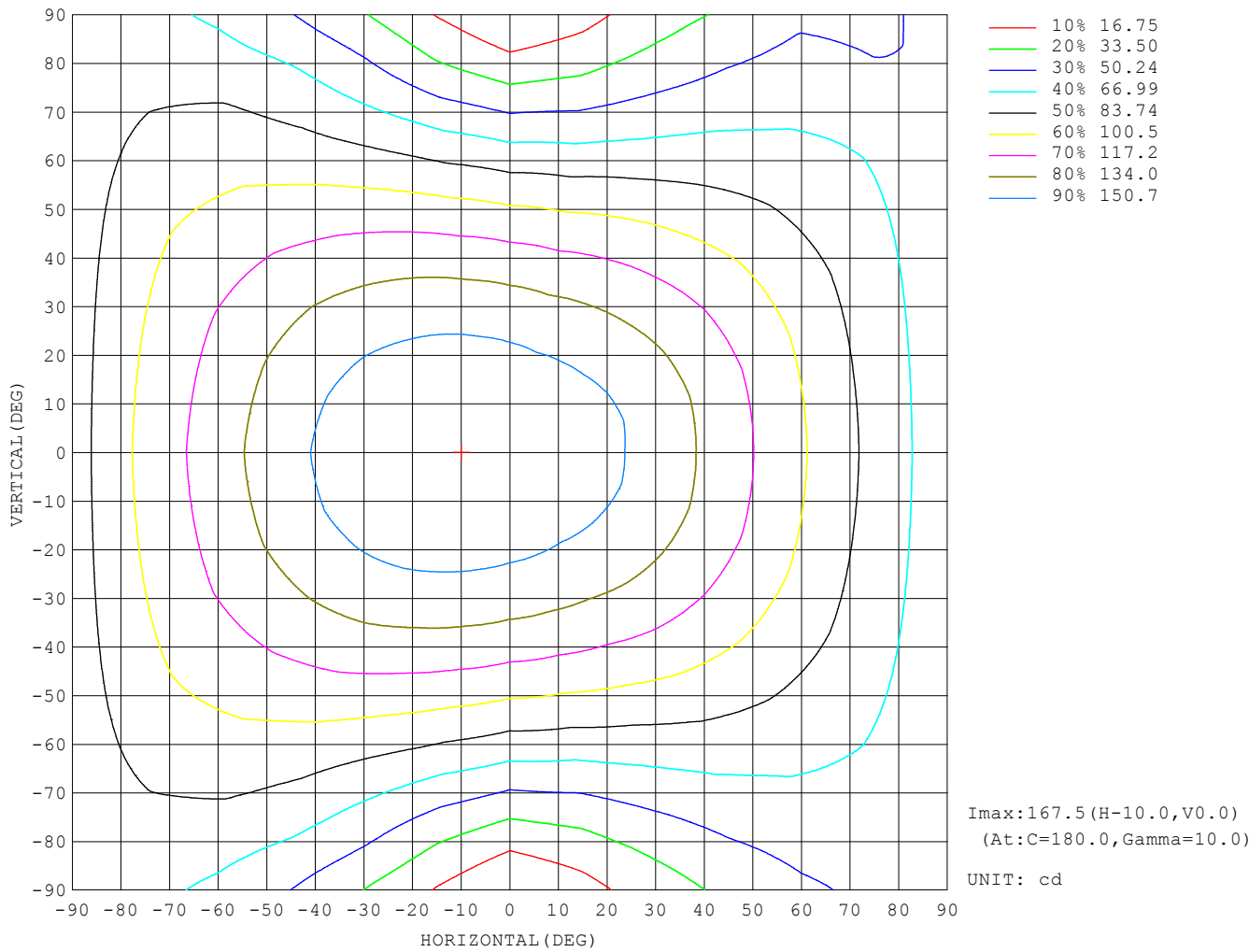
UTILIZATION FACTORS TABLE

REFLECTANCE										
Ceiling	0.8	0.8	0.8	0.7	0.7	0.7	0.5	0.5	0.5	0
Walls	0.7	0.5	0.3	0.7	0.5	0.3	0.7	0.5	0.3	0
Working plane	0.2	0.2	0.2	0.2	0.2	0.2	0.2	0.2	0.2	0
ROOM INDEX	UTILIZATION FACTORS (PERCENT) $k(RI) \times RCR = 5$									
$k = 0.60$	50	38	31	50	38	30	48	37	30	23
0.80	60	47	39	58	46	38	56	45	38	30
1.00	68	55	46	66	54	46	63	55	45	37
1.25	75	62	54	73	61	53	69	59	52	43
1.50	80	68	59	78	66	58	74	64	57	48
2.00	87	76	68	84	74	67	80	72	65	55
2.50	91	81	73	89	79	72	84	76	70	60
3.00	95	86	79	92	84	77	87	80	74	64
4.00	100	92	85	97	90	84	91	85	80	69
5.00	103	96	90	99	93	88	94	89	84	72
ROOM INDEX	UF (total)									Direct
According to DIN EN 13032-2 2004			Suspended				SHRNOM = 1.25			

C Range: 0 - 360DEG
 C Interval: 15.0DEG
 Test Speed: HIGH
 Temperature: 25.3°C
 Operators: DAMIN
 Test Date: 2023-08-29

Range: 0 - 180DEG
 Interval: 1.0DEG
 Test System: EVERFINE GO-2000B_V1 SYSTEM V2.00.471
 Humidity: 65.0%
 Test Distance: 4.880m [K=1.0000]
 Remarks:

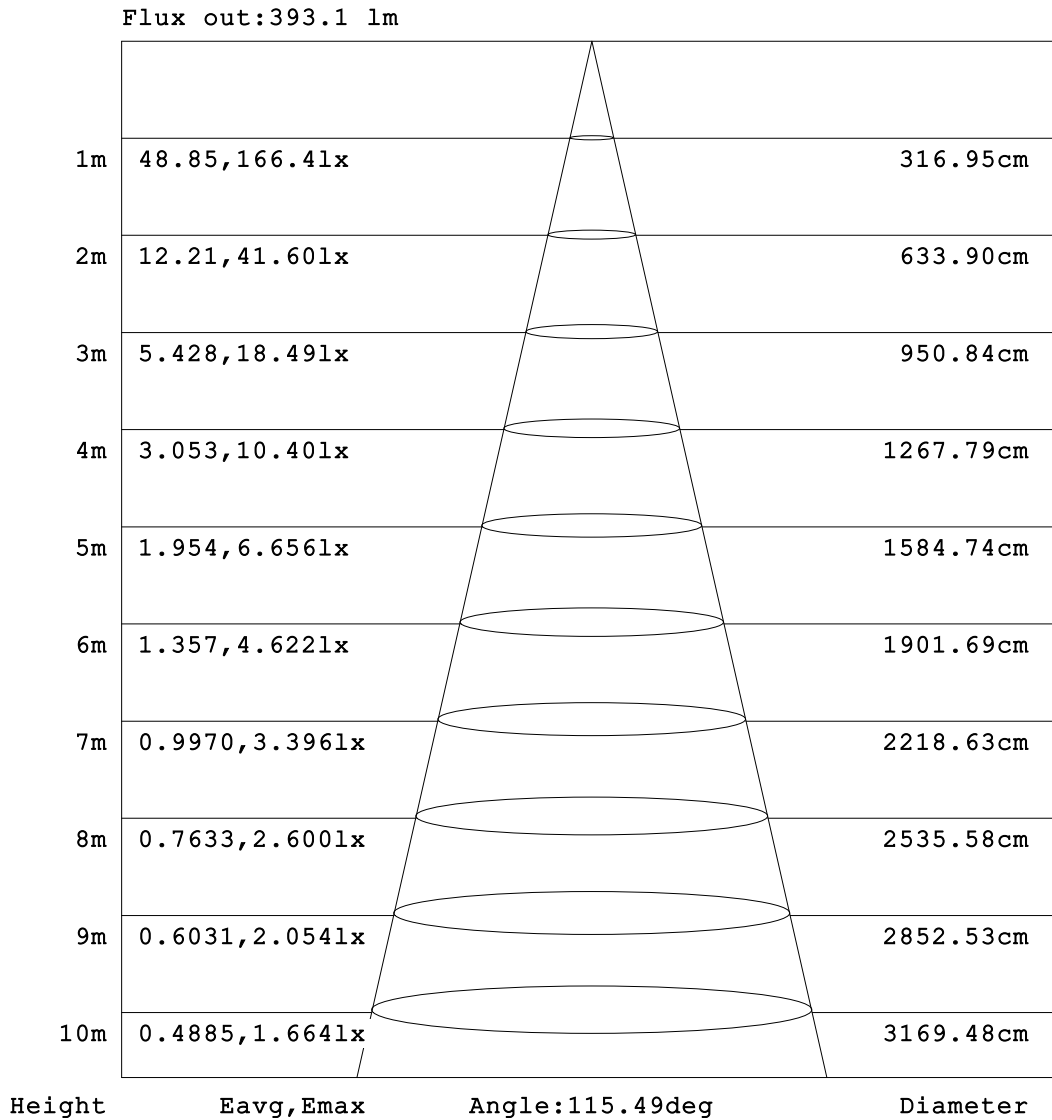
ISOCANDELA DIAGRAM



C Range: 0 - 360DEG
 C Interval: 15.0DEG
 Test Speed: HIGH
 Temperature: 25.3°C
 Operators: DAMIN
 Test Date: 2023-08-29

Range: 0 - 180DEG
 Interval: 1.0DEG
 Test System: EVERFINE GO-2000B_V1 SYSTEM V2.00.471
 Humidity: 65.0%
 Test Distance: 4.880m [K=1.0000]
 Remarks:

AAI Figure

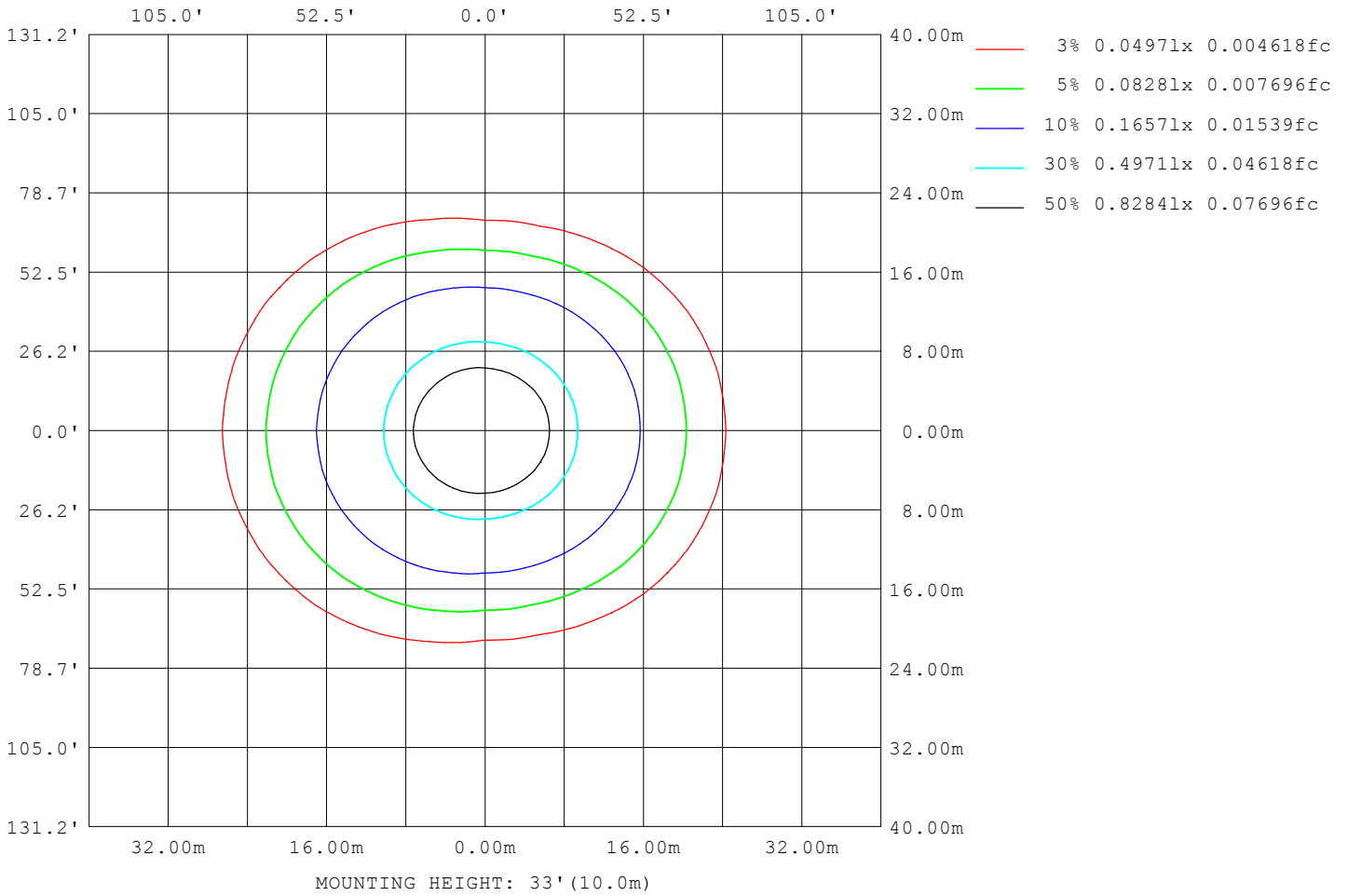


Note:The Curves indicate the illuminated area and the average illumination when the luminaire is at different distance.

C Range: 0 - 360DEG
 C Interval: 15.0DEG
 Test Speed: HIGH
 Temperature:25.3°C
 Operators:DAMIN
 Test Date:2023-08-29

Range: 0 - 180DEG
 Interval: 1.0DEG
 Test System:EVERFINE GO-2000B_V1 SYSTEM V2.00.471
 Humidity:65.0%
 Test Distance:4.880m [K=1.0000]
 Remarks:

ISOLUX DIAGRAM



C Range: 0 - 360DEG
 C Interval: 15.0DEG
 Test Speed: HIGH
 Temperature: 25.3°C
 Operators: DAMIN
 Test Date: 2023-08-29

Range: 0 - 180DEG
 Interval: 1.0DEG
 Test System: EVERFINE GO-2000B_V1 SYSTEM V2.00.471
 Humidity: 65.0%
 Test Distance: 4.880m [K=1.0000]
 Remarks:

LED Avg.L Report

NAME: LED Strip	TYPE: Indoor lighting	WEIGHT: 20g
SPEC.: LED	DIM.: 1000*8*2.8MM	SERIAL No.: 20230814054
MFR.: EVERFINE	SUR.: 1000*8MM	Shielding Angle:

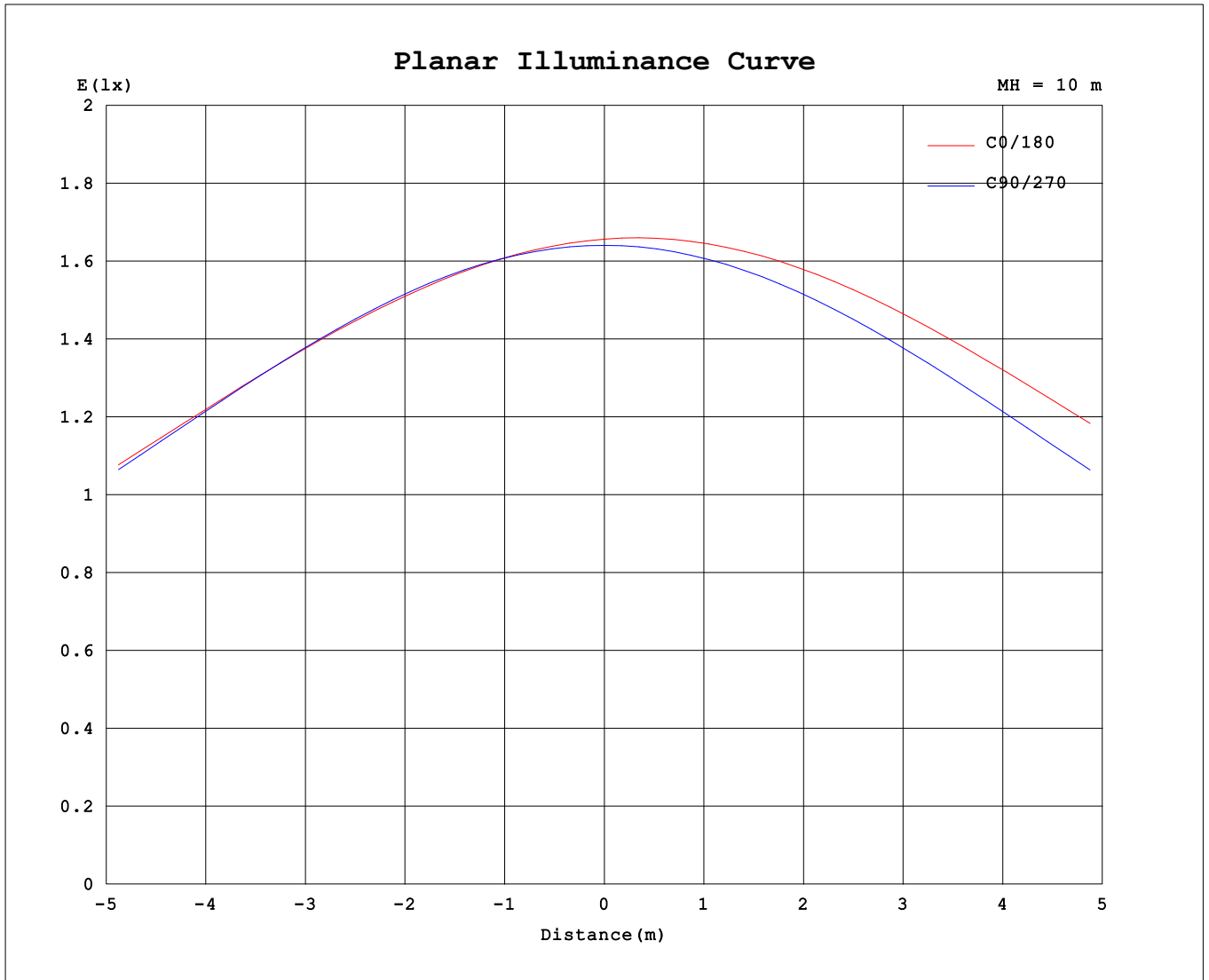
AvgL	cd/m2
L_0~180 (65) av	31639
L_0~180 (75) av	44362
L_0~180 (85) av	107374
L_90~270 (65) av	18658
L_90~270 (75) av	16812
L_90~270 (85) av	15017
L_45 (65) av	26589
L_45 (75) av	34599
L_45 (85) av	76669

Standard: GB/T 29293-2012

C Range: 0 - 360DEG
 C Interval: 15.0DEG
 Test Speed: HIGH
 Temperature:25.3°C
 Operators:DAMIN
 Test Date:2023-08-29

Range: 0 - 180DEG
 Interval: 1.0DEG
 Test System:EVERFINE GO-2000B_V1 SYSTEM V2.00.471
 Humidity:65.0%
 Test Distance:4.880m [K=1.0000]
 Remarks:

Planar Illuminance Curve



C Range: 0 - 360DEG
 C Interval: 15.0DEG
 Test Speed: HIGH
 Temperature: 25.3°C
 Operators: DAMIN
 Test Date: 2023-08-29

Range: 0 - 180DEG
 Interval: 1.0DEG
 Test System: EVERFINE GO-2000B_V1 SYSTEM V2.00.471
 Humidity: 65.0%
 Test Distance: 4.880m [K=1.0000]
 Remarks:

LUMINOUS DISTRIBUTION INTENSITY DATA

Table--1

UNIT: cd

C (DEG) \ □ (DEG)	0	15	30	45	60	75	90	105	120	135	150	165	180	195	210	225	240	255	270
0	166	165	165	164	164	164	164	164	164	165	166	166	166	165	165	164	164	164	164
5	164	164	163	163	163	163	163	164	165	165	166	167	167	167	165	165	164	164	163
10	161	161	160	160	160	161	162	162	164	165	166	167	167	167	165	164	163	162	161
15	158	158	157	157	157	157	158	160	161	163	165	167	167	166	164	163	161	159	158
20	154	154	153	153	152	153	154	156	158	161	164	165	166	164	162	160	158	155	154
25	149	150	149	147	146	147	148	150	154	157	161	163	164	162	160	156	153	150	148
30	144	144	143	142	140	140	141	144	148	153	157	160	160	159	156	152	148	144	141
35	138	138	137	135	132	132	133	137	142	147	152	155	157	155	151	146	141	136	133
40	132	132	130	127	124	122	124	128	134	141	146	150	152	150	146	140	134	128	124
45	125	125	122	119	115	112	113	119	126	134	140	145	146	144	139	133	125	118	113
50	118	117	114	110	105	102	102	108	116	126	133	138	140	138	133	125	116	108	102
55	110	109	106	101	94.2	89.8	89.6	96.7	106	117	125	131	134	131	125	116	106	96.5	90.1
60	102	101	97.3	91.1	83.3	77.5	76.5	84.7	96.0	108	118	124	127	124	117	107	95.8	84.5	77.3
65	94.5	93.3	88.7	81.6	72.4	64.4	62.8	71.8	85.2	98.7	110	117	119	117	109	98.1	85.1	71.9	63.4
70	86.6	85.3	80.0	72.0	61.6	51.9	48.5	59.2	74.4	89.6	101	110	112	109	101	89.1	74.3	59.0	49.3
75	78.9	77.4	71.6	62.8	51.5	39.7	34.3	46.7	64.0	80.8	93.5	102	105	102	93.4	80.4	63.9	46.6	35.3
80	71.3	69.4	63.5	54.0	41.8	28.7	21.4	35.0	54.3	71.5	84.5	93.1	96.4	93.2	85.0	71.7	54.3	34.9	22.1
85	63.6	61.6	55.4	45.6	32.8	19.1	10.0	24.9	44.1	61.0	74.0	82.7	86.1	82.9	74.6	61.7	44.9	24.9	10.9
90	55.8	53.7	47.5	37.7	24.9	11.4	1.79	15.6	33.4	50.1	63.2	71.8	75.6	72.3	64.0	50.9	34.5	15.9	2.49
95	47.6	45.5	39.1	29.7	17.1	4.68	0.85	3.90	21.5	39.3	52.7	61.5	65.3	62.2	53.8	40.3	23.2	3.45	0.86
100	36.6	34.8	28.5	19.2	7.25	1.13	0.82	1.17	3.39	18.1	32.8	43.4	48.7	44.8	35.2	17.9	2.78	1.01	0.86
105	25.0	23.1	16.8	8.05	1.78	1.07	0.86	1.04	1.26	2.87	8.06	15.6	21.1	15.6	7.47	2.24	1.21	0.95	0.89
110	13.9	12.2	7.37	2.94	1.24	1.05	0.94	0.98	1.12	1.38	2.04	3.62	3.59	2.74	1.92	1.41	1.03	0.95	1.00
115	6.81	5.60	2.75	1.52	1.25	1.10	1.04	1.02	1.12	1.24	1.47	1.62	1.78	1.71	1.49	1.20	1.08	1.05	1.10
120	3.18	2.69	1.69	1.40	1.30	1.19	1.13	1.11	1.19	1.28	1.36	1.43	1.51	1.46	1.32	1.21	1.17	1.15	1.19
125	1.75	1.60	1.52	1.46	1.38	1.28	1.23	1.21	1.26	1.34	1.38	1.41	1.43	1.41	1.34	1.28	1.26	1.24	1.29
130	1.61	1.58	1.54	1.52	1.43	1.37	1.32	1.31	1.32	1.41	1.43	1.46	1.42	1.41	1.39	1.36	1.34	1.33	1.37
135	1.62	1.63	1.60	1.58	1.49	1.45	1.41	1.40	1.41	1.47	1.49	1.52	1.47	1.45	1.45	1.43	1.43	1.42	1.46
140	1.67	1.68	1.65	1.63	1.56	1.53	1.49	1.49	1.49	1.53	1.55	1.59	1.52	1.50	1.52	1.50	1.51	1.51	1.54
145	1.71	1.74	1.70	1.68	1.63	1.61	1.59	1.58	1.57	1.60	1.61	1.65	1.58	1.57	1.58	1.57	1.59	1.59	1.62
150	1.76	1.79	1.76	1.74	1.71	1.70	1.68	1.68	1.66	1.68	1.68	1.72	1.64	1.63	1.65	1.65	1.66	1.67	1.69
155	1.81	1.83	1.81	1.80	1.77	1.77	1.75	1.76	1.74	1.75	1.75	1.79	1.71	1.69	1.72	1.72	1.74	1.74	1.77
160	1.87	1.88	1.86	1.86	1.84	1.84	1.82	1.83	1.82	1.83	1.82	1.85	1.78	1.76	1.79	1.79	1.81	1.82	1.84
165	1.92	1.93	1.91	1.91	1.89	1.90	1.89	1.90	1.89	1.90	1.89	1.92	1.86	1.83	1.85	1.86	1.88	1.88	1.90
170	1.96	1.97	1.95	1.96	1.95	1.96	1.95	1.96	1.95	1.96	1.96	1.99	1.93	1.90	1.92	1.92	1.94	1.94	1.96
175	1.99	2.00	1.99	1.99	1.99	2.00	1.99	2.01	2.00	2.02	2.01	2.05	1.98	1.96	1.97	1.97	1.99	1.99	2.00
180	2.01	2.01	2.00	2.01	2.01	2.01	2.02	2.03	2.03	2.04	2.05	2.08	2.01	2.00	2.00	2.01	2.01	2.01	2.02

C Range: 0 - 360DEG
 C Interval: 15.0DEG
 Test Speed: HIGH
 Temperature: 25.3°C
 Operators: DAMIN
 Test Date: 2023-08-29

□ Range: 0 - 180DEG
 □ Interval: 1.0DEG
 Test System: EVERFINE GO-2000B_V1 SYSTEM V2.00.471
 Humidity: 65.0%
 Test Distance: 4.880m [K=1.0000]
 Remarks:

LUMINOUS DISTRIBUTION INTENSITY DATA

Table--2

UNIT: cd

C (DEG) \ □ (DEG)	285	300	315	330	345														
0	164	164	165	166	166														
5	163	163	163	164	164														
10	161	160	160	161	162														
15	157	157	157	158	158														
20	152	152	153	154	155														
25	146	146	147	149	150														
30	139	140	141	143	145														
35	131	132	134	137	139														
40	122	124	127	130	132														
45	112	115	118	122	125														
50	101	105	109	114	117														
55	89.8	94.6	100	106	109														
60	77.6	83.7	90.6	97.4	101														
65	65.0	72.3	81.2	88.8	93.4														
70	52.4	61.8	71.8	80.1	85.3														
75	40.2	51.6	62.6	71.4	77.4														
80	29.1	42.0	53.9	63.3	69.6														
85	19.4	33.2	45.5	55.4	60.5														
90	11.6	25.2	36.7	42.5	46.5														
95	4.44	13.3	22.2	29.4	34.0														
100	1.38	8.64	18.9	26.5	27.8														
105	1.03	3.20	10.2	18.4	23.7														
110	1.05	1.39	4.51	10.1	13.8														
115	1.14	1.23	2.04	4.54	7.10														
120	1.23	1.31	1.40	2.15	3.16														
125	1.32	1.39	1.46	1.55	1.69														
130	1.40	1.47	1.53	1.60	1.67														
135	1.48	1.54	1.59	1.66	1.70														
140	1.55	1.61	1.65	1.71	1.74														
145	1.63	1.68	1.71	1.76	1.80														
150	1.71	1.74	1.77	1.81	1.85														
155	1.78	1.81	1.82	1.87	1.89														
160	1.84	1.87	1.88	1.92	1.94														
165	1.90	1.93	1.93	1.96	1.99														
170	1.96	1.98	1.98	2.01	2.03														
175	2.00	2.01	2.01	2.04	2.07														
180	2.03	2.04	2.04	2.05	2.08														

C Range: 0 - 360DEG
 C Interval: 15.0DEG
 Test Speed: HIGH
 Temperature: 25.3°C
 Operators: DAMIN
 Test Date: 2023-08-29

□ Range: 0 - 180DEG
 □ Interval: 1.0DEG
 Test System: EVERFINE GO-2000B_V1 SYSTEM V2.00.471
 Humidity: 65.0%
 Test Distance: 4.880m [K=1.0000]
 Remarks: