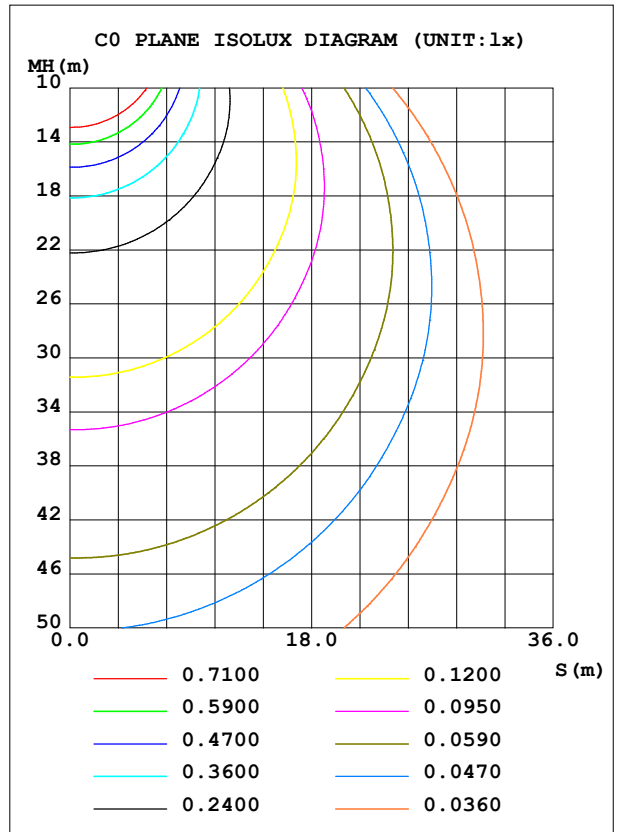
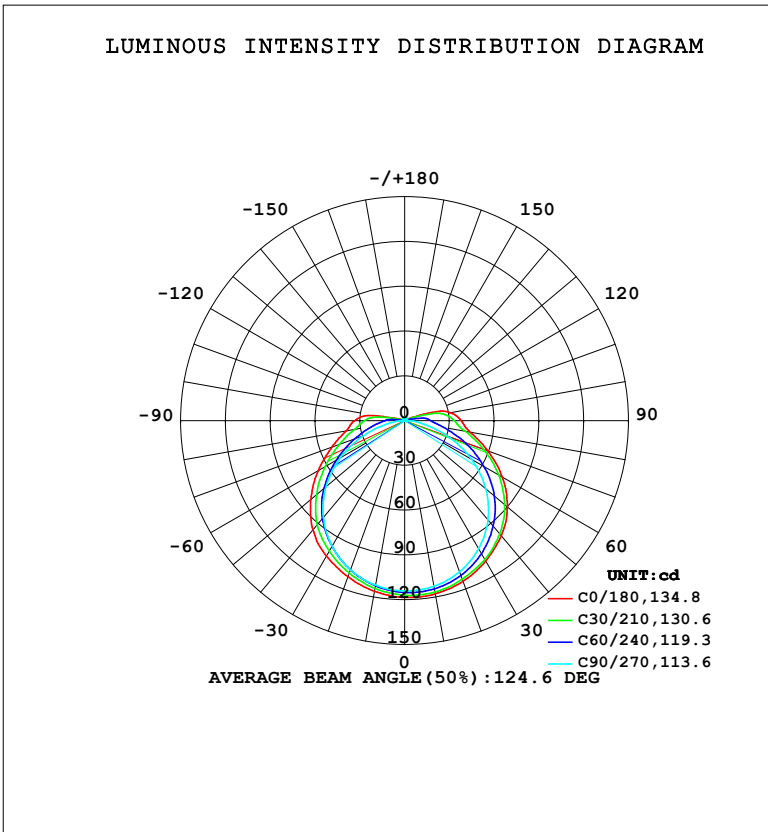


LUMINAIRE PHOTOMETRIC TEST REPORT

NAME: LED Strip	TYPE: Indoor lighting	WEIGHT: 20g
SPEC.: 2835 080LED	DIM.: 500*8*1.2MM	SERIAL No.: 20240125025
MFR.: Hide-a-lite	SUR.: 500*8MM	Shielding Angle:

DATA OF LAMP		PHOTOMETRIC DATA			
WNOBBE-24 (WCP) -UR-EK-CV-UE-EP		Imax (cd)	118.6	S/MH (C0/180)	1.33
NOMINAL POWER (W)	2.38331	LOR (%)	100.0	S/MH (C90/270)	1.27
RATED VOLTAGE (V)	DC 24V	TOTAL FLUX (lm)	431.93	η UP, DN (C0-180)	4.2, 46.9
NOMINAL FLUX (lm)	431.935	CIE CLASS	DIRECT	η UP, DN (C180-360)	3.8, 45.1
LAMPS INSIDE	1	η up (%)	8.0	CIBSE SHR NOM	1.50
TEST VOLTAGE (V)	DC 24V	η down (%)	92.0	CIBSE SHR MAX	1.50



C Range: 0 - 360DEG
 C Interval: 15.0DEG
 Test Speed: HIGH
 Temperature: 25.3°C
 Operators: DAMIN
 Test Date: 2024-01-30

γ Range: 0 - 180DEG
 γ Interval: 1.0DEG
 Test System: EVERFINE GO-2000B_V1 SYSTEM V2.00.471
 Humidity: 65.0%
 Test Distance: 4.880m [K=1.0000]
 Remarks:

ZONAL FLUX DIAGRAM

ZONAL FLUX DIAGRAM:

γ	C0	C45	C90	C135	C180	C225	C270	C315	γ	Φ zone	Φ total	%lum,lamp
10	117.9	115.8	112.7	111.9	116.1	113.2	112.0	113.1	0- 10	10.94	10.94	2.53,2.53
20	114.5	112.1	107.7	106.6	111.3	107.4	106.4	109.1	10- 20	31.58	42.52	9.84,9.84
30	108.6	105.3	99.13	98.93	104.7	98.64	97.27	102.2	20- 30	48.70	91.23	21.1,21.1
40	100.8	95.54	86.87	89.18	95.57	88.01	84.75	91.96	30- 40	60.59	151.8	35.1,35.1
50	89.84	83.55	70.99	75.06	82.11	73.37	68.60	77.82	40- 50	65.51	217.3	50.3,50.3
60	75.53	67.61	51.80	58.89	66.75	57.26	49.62	64.19	50- 60	62.33	279.7	64.7,64.7
70	59.34	50.73	30.71	43.40	51.88	41.63	28.93	48.60	60- 70	52.27	331.9	76.8,76.8
80	44.56	35.37	12.48	30.80	39.82	28.86	10.48	32.22	70- 80	38.60	370.5	85.8,85.8
90	38.07	26.65	2.563	23.01	33.58	20.75	1.314	23.70	80- 90	26.97	397.5	92,92
100	31.17	19.68	1.765	7.875	18.62	7.416	0.7145	18.75	90-100	19.60	417.1	96.6,96.6
110	10.87	3.989	0.6237	2.704	2.265	1.165	0.7910	4.158	100-110	8.088	425.2	98.4,98.4
120	1.893	0.9686	0.7564	1.305	0.9860	0.9963	1.161	2.085	110-120	2.135	427.3	98.9,98.9
130	0.9638	0.9825	0.8927	1.044	1.054	1.087	1.417	2.066	120-130	1.219	428.5	99.2,99.2
140	1.038	1.091	1.033	1.120	1.129	1.181	1.643	2.440	130-140	1.046	429.6	99.5,99.5
150	1.142	1.210	2.257	1.212	1.222	1.241	1.802	2.504	140-150	0.9215	430.5	99.7,99.7
160	1.257	1.350	2.286	1.320	1.320	1.326	1.952	2.415	150-160	0.7636	431.3	99.8,99.8
170	1.369	1.404	2.241	2.049	1.402	1.393	2.066	2.384	160-170	0.4974	431.8	100,100
180	1.446	1.429	2.201	2.447	1.445	1.431	2.120	2.483	170-180	0.1773	431.9	100,100
DEG	LUMINOUS INTENSITY:cd									UNIT:lm		

Conical surface Flux(90deg): 184.46 lm

%lum = 42.7%

%lamp = 42.7%

Conical surface Flux(120deg): 279.65 lm

%lum = 64.7%

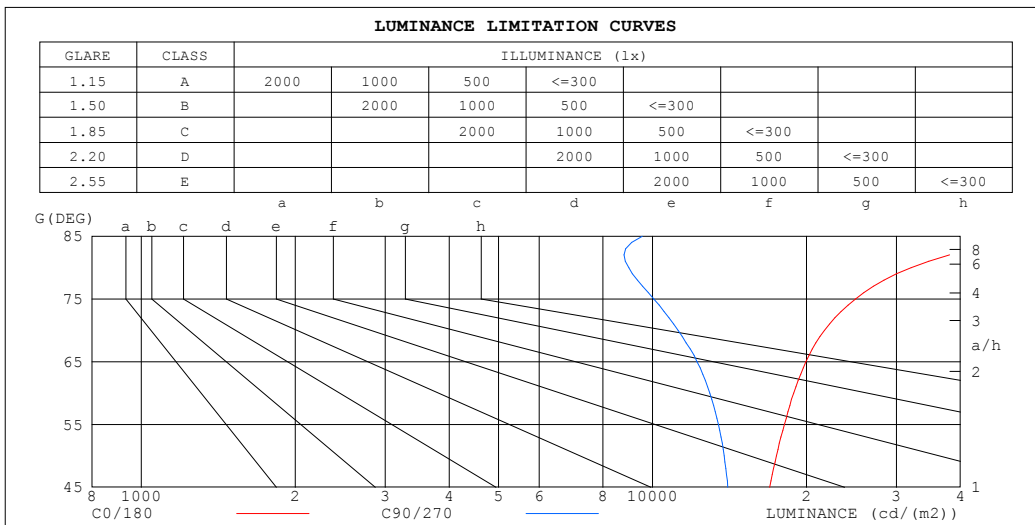
%lamp = 64.7%

C Range: 0 - 360DEG
 C Interval: 15.0DEG
 Test Speed: HIGH
 Temperature:25.3°C
 Operators:DAMIN
 Test Date:2024-01-30

γ Range: 0 - 180DEG
 γ Interval: 1.0DEG
 Test System:EVERFINE GO-2000B_V1 SYSTEM V2.00.471
 Humidity:65.0%
 Test Distance:4.880m [K=1.0000]
 Remarks:

LUMINANCE LIMITATION CURVES

NAME: LED Strip	TYPE: Indoor lighting	WEIGHT: 20g
SPEC.: 2835 080LED	DIM.: 500*8*1.2MM	SERIAL No.: 20240125025
MFR.: Hide-a-lite	SUR.: 500*8MM	Shielding Angle:



LUMINANCE cd/(m2)		
G (DEG)	C0/180	C90/270
85	57834	9546
80	32078	8981
75	24941	10062
70	21687	11225
65	19961	12226
60	18881	12949
55	18121	13450
50	17471	13806
45	16949	14034

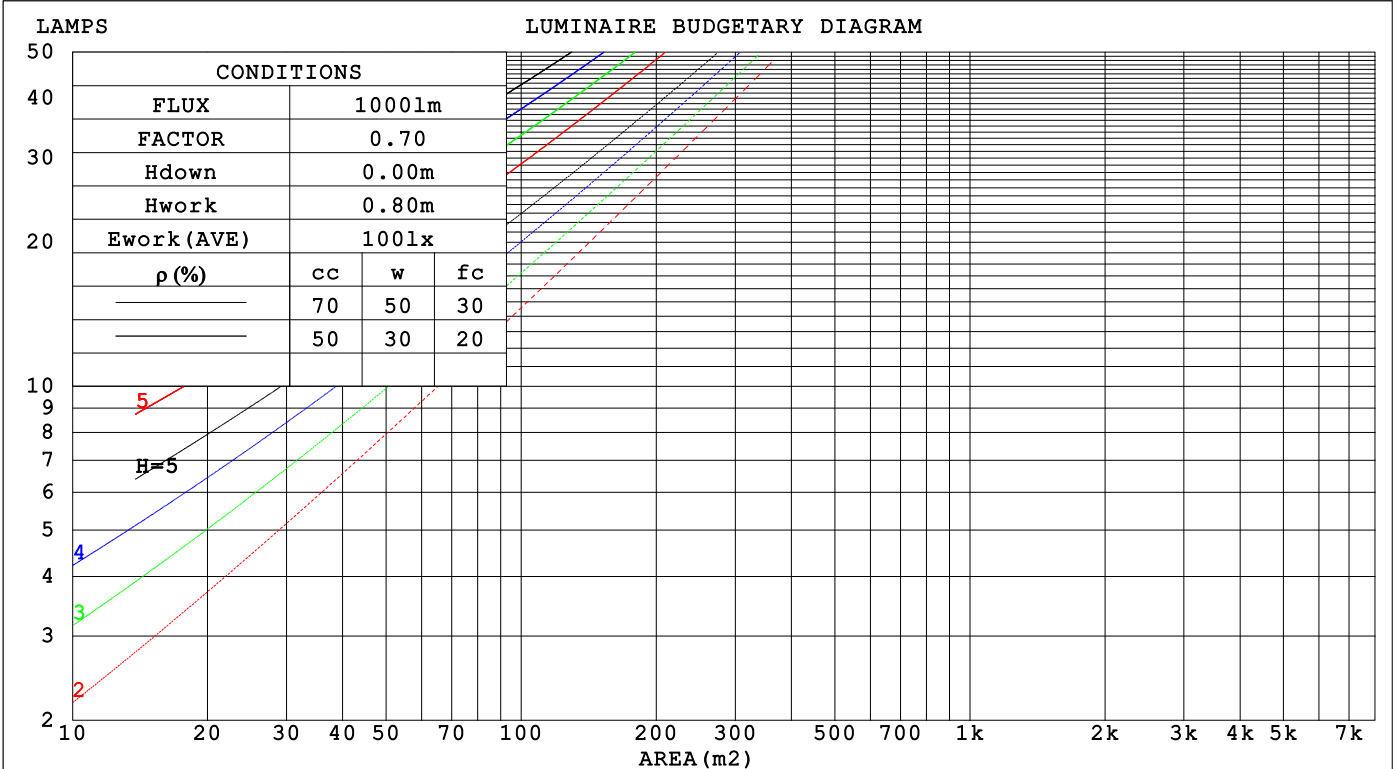
C Range: 0 - 360DEG
 C Interval: 15.0DEG
 Test Speed: HIGH
 Temperature: 25.3°C
 Operators: DAMIN
 Test Date: 2024-01-30

γ Range: 0 - 180DEG
 γ Interval: 1.0DEG
 Test System: EVERFINE GO-2000B_V1 SYSTEM V2.00.471
 Humidity: 65.0%
 Test Distance: 4.880m [K=1.0000]
 Remarks:

CU AND LUMINAIRE BUDGETARY ESTIMATE DIAGRAM

NAME: LED Strip	TYPE: Indoor lighting	WEIGHT: 20g
SPEC.: 2835 080LED	DIM.: 500*8*1.2MM	SERIAL No.: 20240125025
MFR.: Hide-a-lite	SUR.: 500*8MM	Shielding Angle:

pcc	80%			70%			50%			30%			10%			0
	50%	30%	10%	50%	30%	10%	50%	30%	10%	50%	30%	10%	50%	30%	10%	0
pw																
pfc	20%			20%			20%			20%			20%			0
RCR	RCR:Room Cavity Ratio Coefficients of Utilization(CU)															
0.0	1.17	1.17	1.17	1.13	1.13	1.13	1.07	1.07	1.07	1.00	1.00	1.00	.95	.95	.95	.92
1.0	.99	.94	.89	.96	.91	.87	.90	.86	.83	.85	.82	.79	.80	.77	.75	.72
2.0	.85	.77	.71	.82	.75	.69	.77	.72	.67	.73	.68	.64	.69	.65	.61	.59
3.0	.74	.65	.58	.72	.64	.57	.68	.61	.55	.64	.58	.53	.60	.55	.51	.48
4.0	.65	.56	.49	.63	.55	.48	.60	.52	.46	.56	.50	.45	.53	.48	.43	.41
5.0	.58	.48	.41	.56	.47	.41	.53	.46	.40	.50	.44	.38	.48	.42	.37	.35
6.0	.52	.43	.36	.51	.42	.35	.48	.40	.34	.45	.39	.34	.43	.37	.33	.30
7.0	.47	.38	.31	.46	.37	.31	.43	.36	.30	.41	.35	.30	.39	.33	.29	.27
8.0	.43	.34	.28	.42	.33	.28	.40	.32	.27	.38	.31	.26	.36	.30	.26	.24
9.0	.39	.31	.25	.38	.30	.25	.36	.29	.24	.35	.28	.24	.33	.27	.23	.21
10.0	.36	.28	.23	.35	.27	.22	.34	.27	.22	.32	.26	.21	.31	.25	.21	.19



C Range: 0 - 360DEG
 C Interval: 15.0DEG
 Test Speed: HIGH
 Temperature: 25.3°C
 Operators: DAMIN
 Test Date: 2024-01-30

γ Range: 0 - 180DEG
 γ Interval: 1.0DEG
 Test System: EVERFINE GO-2000B_V1 SYSTEM V2.00.471
 Humidity: 65.0%
 Test Distance: 4.880m [K=1.0000]
 Remarks:

WEC AND CCEC

NAME: LED Strip	TYPE: Indoor lighting	WEIGHT: 20g
SPEC.: 2835 080LED	DIM.: 500*8*1.2MM	SERIAL No.: 20240125025
MFR.: Hide-a-lite	SUR.: 500*8MM	Shielding Angle:

ρ_{CC}	80%			70%			50%			30%			10%			0
ρ_w	50%	30%	10%	50%	30%	10%	50%	30%	10%	50%	30%	10%	50%	30%	10%	0
ρ_{fc}	20%			20%			20%			20%			20%			0
RCR	RCR:Room Cavity Ratio						Wall Exitance Coefficients(WEC)									
0.0																
1.0	.368	.209	.066	.359	.205	.065	.340	.195	.062	.324	.187	.060	.309	.179	.058	
2.0	.325	.178	.055	.316	.174	.054	.300	.167	.052	.285	.160	.050	.271	.154	.048	
3.0	.292	.155	.047	.284	.152	.046	.269	.146	.044	.256	.140	.043	.244	.135	.042	
4.0	.264	.137	.040	.257	.135	.040	.244	.130	.039	.232	.125	.038	.221	.120	.037	
5.0	.241	.123	.036	.235	.121	.035	.223	.116	.034	.212	.112	.033	.202	.108	.032	
6.0	.222	.111	.032	.216	.109	.031	.206	.105	.031	.196	.102	.030	.186	.098	.029	
7.0	.205	.101	.029	.200	.100	.028	.190	.096	.028	.181	.093	.027	.173	.090	.026	
8.0	.191	.093	.026	.186	.092	.026	.177	.089	.025	.169	.086	.025	.161	.083	.024	
9.0	.178	.086	.024	.174	.085	.024	.166	.082	.023	.158	.079	.023	.151	.077	.022	
10.0	.167	.080	.022	.163	.079	.022	.156	.076	.021	.149	.074	.021	.142	.072	.021	

ρ_{CC}	80%			70%			50%			30%			10%			0
ρ_w	50%	30%	10%	50%	30%	10%	50%	30%	10%	50%	30%	10%	50%	30%	10%	0
ρ_{fc}	20%			20%			20%			20%			20%			0
RCR	RCR:Room Cavity Ratio						Ceiling Cavity Exitance Coefficients(CCEC)									
0.0	.251	.251	.251	.215	.215	.215	.147	.147	.147	.084	.084	.084	.027	.027	.027	
1.0	.246	.217	.191	.210	.186	.164	.144	.128	.114	.083	.074	.066	.027	.024	.021	
2.0	.238	.193	.156	.204	.167	.135	.140	.115	.094	.081	.067	.055	.026	.022	.018	
3.0	.231	.176	.133	.198	.152	.116	.136	.106	.081	.078	.062	.048	.025	.020	.016	
4.0	.223	.164	.118	.191	.141	.103	.132	.099	.072	.076	.058	.043	.024	.019	.014	
5.0	.215	.154	.108	.185	.133	.094	.127	.093	.066	.074	.054	.039	.024	.018	.013	
6.0	.208	.145	.101	.179	.126	.088	.123	.088	.062	.071	.052	.037	.023	.017	.012	
7.0	.201	.139	.095	.173	.120	.083	.119	.084	.059	.069	.050	.035	.022	.016	.012	
8.0	.194	.133	.091	.167	.115	.079	.116	.081	.056	.067	.048	.034	.022	.016	.011	
9.0	.188	.128	.088	.162	.111	.077	.112	.078	.054	.065	.046	.032	.021	.015	.011	
10.0	.182	.124	.085	.157	.108	.074	.109	.076	.053	.063	.045	.032	.021	.015	.010	

C Range: 0 - 360DEG
 C Interval: 15.0DEG
 Test Speed: HIGH
 Temperature:25.3°C
 Operators:DAMIN
 Test Date:2024-01-30

γ Range: 0 - 180DEG
 γ Interval: 1.0DEG
 Test System:EVERFINE GO-2000B_V1 SYSTEM V2.00.471
 Humidity:65.0%
 Test Distance:4.880m [K=1.0000]
 Remarks:

UGR(Unified Glare Rating) Table

NAME: LED Strip		TYPE: Indoor lighting					WEIGHT: 20g				
SPEC.: 2835 080LED		DIM.: 500*8*1.2MM					SERIAL No.: 20240125025				
MFR.: Hide-a-lite		SUR.: 500*8MM					Shielding Angle:				
ceiling/cavity	0.7	0.7	0.5	0.5	0.3	0.7	0.7	0.5	0.5	0.3	
walls	0.5	0.3	0.5	0.3	0.3	0.5	0.3	0.5	0.3	0.3	
working plane	0.2	0.2	0.2	0.2	0.2	0.2	0.2	0.2	0.2	0.2	
Room dimensions	Viewed crosswise					Viewed endwise					
x = 2H y = 2H	25.9	27.4	26.3	27.8	28.1	24.4	25.9	24.8	26.2	26.6	
3H	28.2	29.6	28.6	30.0	30.4	25.8	27.2	26.2	27.6	28.0	
4H	29.4	30.7	29.8	31.1	31.5	26.3	27.7	26.8	28.1	28.5	
6H	30.7	31.9	31.1	32.3	32.8	26.7	28.0	27.2	28.4	28.8	
8H	31.4	32.6	31.8	33.0	33.5	26.8	28.0	27.3	28.5	28.9	
12H	32.2	33.4	32.7	33.8	34.3	26.9	28.1	27.4	28.5	29.0	
4H 2H	26.5	27.8	27.0	28.2	28.7	25.4	26.7	25.8	27.1	27.5	
3H	29.0	30.2	29.5	30.6	31.1	27.1	28.2	27.5	28.7	29.1	
4H	30.4	31.5	30.9	32.0	32.5	27.8	28.8	28.3	29.3	29.8	
6H	31.9	32.9	32.4	33.4	33.9	28.3	29.2	28.8	29.7	30.3	
8H	32.8	33.7	33.3	34.2	34.7	28.5	29.4	29.0	29.9	30.5	
12H	33.8	34.6	34.3	35.1	35.7	28.7	29.5	29.2	30.0	30.6	
8H 4H	30.8	31.7	31.3	32.2	32.7	28.6	29.5	29.1	30.0	30.5	
6H	32.6	33.3	33.1	33.9	34.5	29.5	30.2	30.0	30.8	31.4	
8H	33.6	34.3	34.2	34.9	35.5	29.8	30.5	30.4	31.1	31.7	
12H	34.9	35.5	35.5	36.1	36.7	30.2	30.7	30.8	31.3	32.0	
12H 4H	30.8	31.6	31.3	32.1	32.7	28.8	29.6	29.4	30.2	30.8	
6H	32.7	33.4	33.3	33.9	34.5	29.9	30.6	30.5	31.1	31.8	
8H	33.8	34.4	34.4	35.0	35.7	30.4	31.0	31.0	31.6	32.2	
Variations with the observer position at spacings(CIE Pub.117):											
S = 1.0H	+ 0.1 / - 0.1					+ 0.1 / - 0.2					
1.5H	+ 0.2 / - 0.3					+ 0.2 / - 0.3					
2.0H	+ 0.2 / - 0.4					+ 0.2 / - 0.4					

CIE Pub.117, 431.9 lm Total Lamp Luminous Flux Correct (8log(F/F0) = -2.9)
 Area: 0.008 m2

C Range: 0 - 360DEG
 C Interval: 15.0DEG
 Test Speed: HIGH
 Temperature:25.3°C
 Operators:DAMIN
 Test Date:2024-01-30

γ Range: 0 - 180DEG
 γ Interval: 1.0DEG
 Test System:EVERFINE GO-2000B_V1 SYSTEM V2.00.471
 Humidity:65.0%
 Test Distance:4.880m [K=1.0000]
 Remarks:

UTILIZATION FACTORS TABLE

NAME: LED Strip	TYPE: Indoor lighting	WEIGHT: 20g
SPEC.: 2835 080LED	DIM.: 500*8*1.2MM	SERIAL No.: 20240125025
MFR.: Hide-a-lite	SUR.: 500*8MM	Shielding Angle:

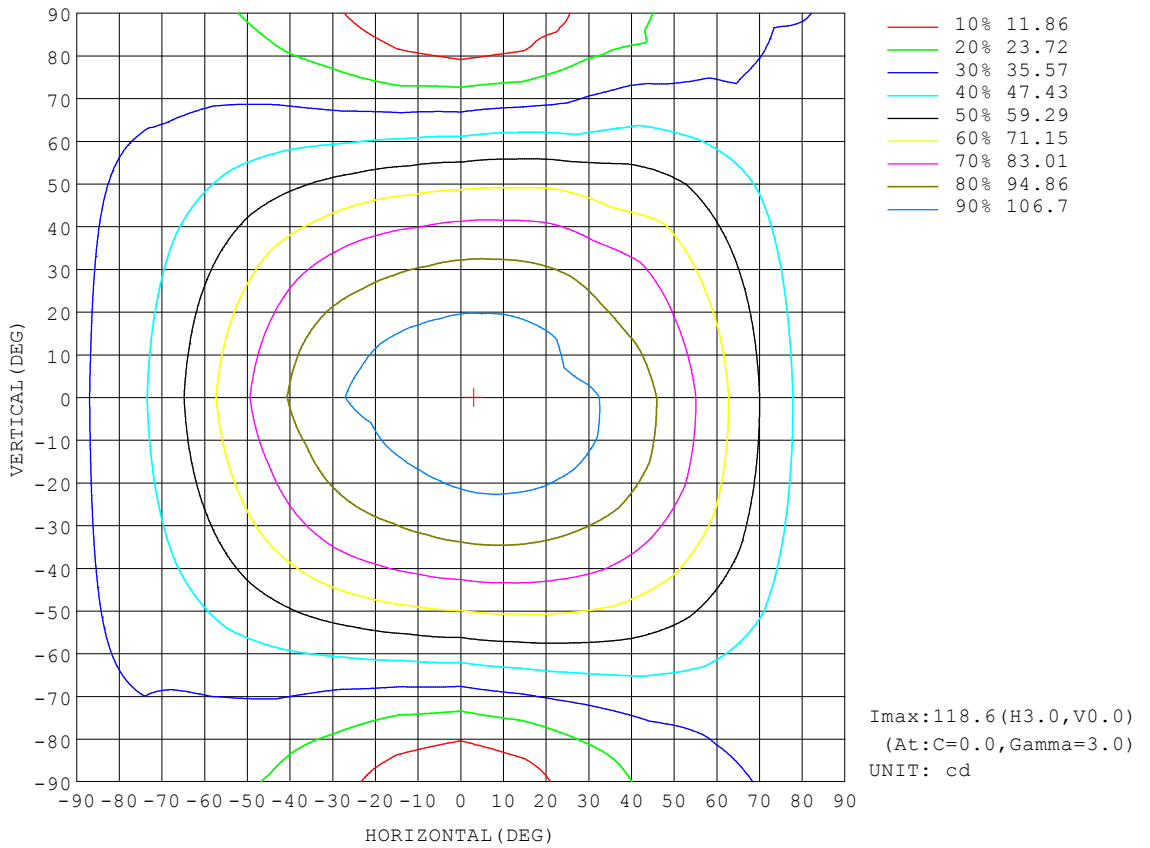
REFLECTANCE										
Ceiling	0.8	0.8	0.8	0.7	0.7	0.7	0.5	0.5	0.5	0
Walls	0.7	0.5	0.3	0.7	0.5	0.3	0.7	0.5	0.3	0
Working plane	0.2	0.2	0.2	0.2	0.2	0.2	0.2	0.2	0.2	0
ROOM INDEX	UTILIZATION FACTORS (PERCENT) $k(RI) \times RCR = 5$									
$k = 0.60$	52	40	32	51	39	32	49	39	32	25
0.80	61	49	41	60	48	41	58	47	40	33
1.00	69	57	49	68	56	48	65	57	48	40
1.25	76	64	56	74	63	56	71	62	55	46
1.50	81	70	62	79	69	61	76	66	60	51
2.00	88	78	70	86	77	69	82	74	67	58
2.50	93	83	76	90	81	75	85	78	72	62
3.00	96	88	81	94	86	79	88	82	77	66
4.00	101	93	87	98	91	86	92	87	82	71
5.00	104	97	92	100	95	90	95	90	86	74
ROOM INDEX	UF(total)									Direct
According to DIN EN 13032-2 2004			Suspended				SHRNOM = 1.25			

C Range: 0 - 360DEG
 C Interval: 15.0DEG
 Test Speed: HIGH
 Temperature: 25.3°C
 Operators: DAMIN
 Test Date: 2024-01-30

γ Range: 0 - 180DEG
 γ Interval: 1.0DEG
 Test System: EVERFINE GO-2000B_V1 SYSTEM V2.00.471
 Humidity: 65.0%
 Test Distance: 4.880m [K=1.0000]
 Remarks:

ISOCANDELA DIAGRAM

NAME: LED Strip	TYPE: Indoor lighting	WEIGHT: 20g
SPEC.: 2835 080LED	DIM.: 500*8*1.2MM	SERIAL No.: 20240125025
MFR.: Hide-a-lite	SUR.: 500*8MM	Shielding Angle:

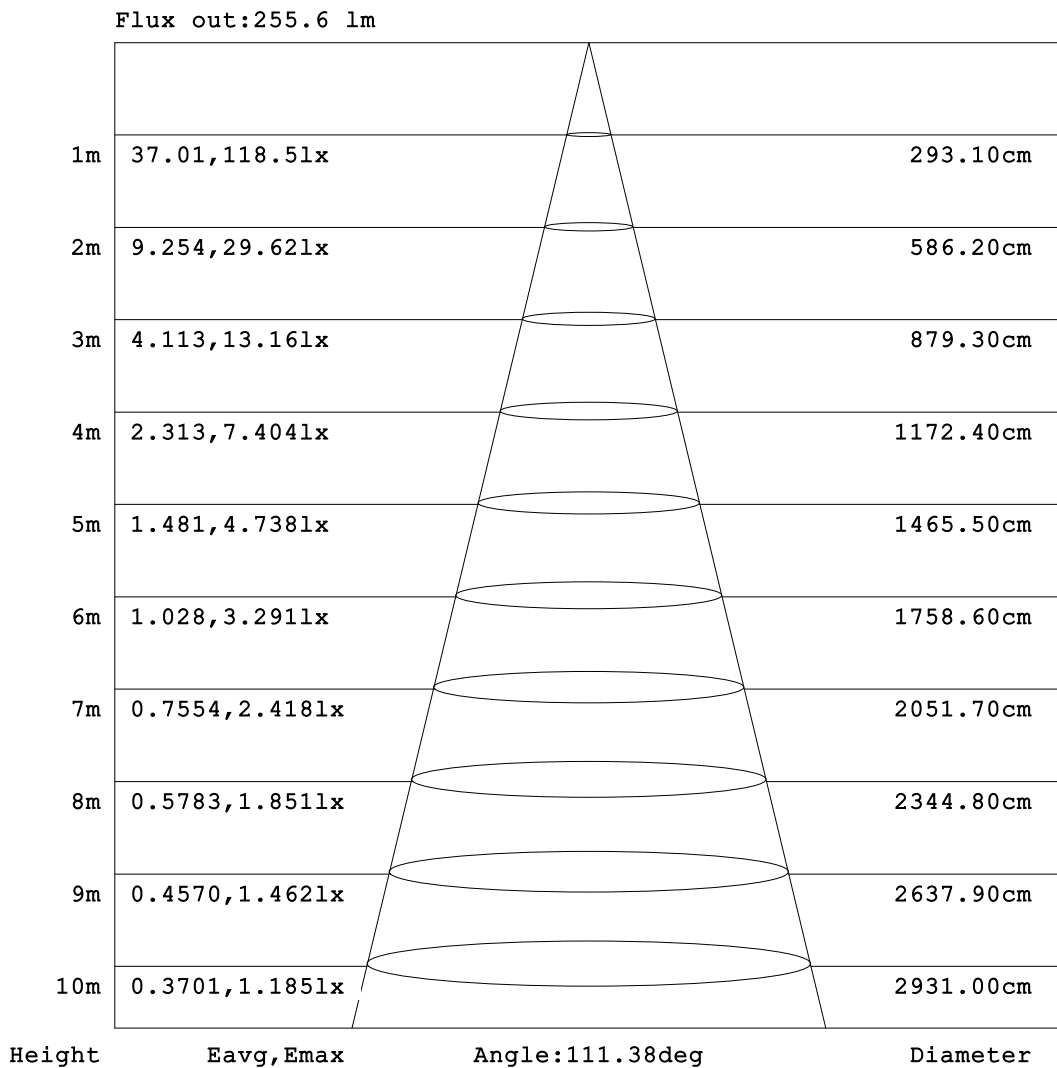


C Range: 0 - 360DEG
 C Interval: 15.0DEG
 Test Speed: HIGH
 Temperature:25.3°C
 Operators:DAMIN
 Test Date:2024-01-30

γ Range: 0 - 180DEG
 γ Interval: 1.0DEG
 Test System:EVERFINE GO-2000B_V1 SYSTEM V2.00.471
 Humidity:65.0%
 Test Distance:4.880m [K=1.0000]
 Remarks:

AAI Figure

NAME: LED Strip	TYPE: Indoor lighting	WEIGHT: 20g
SPEC.: 2835 080LED	DIM.: 500*8*1.2MM	SERIAL No.: 20240125025
MFR.: Hide-a-lite	SUR.: 500*8MM	Shielding Angle:



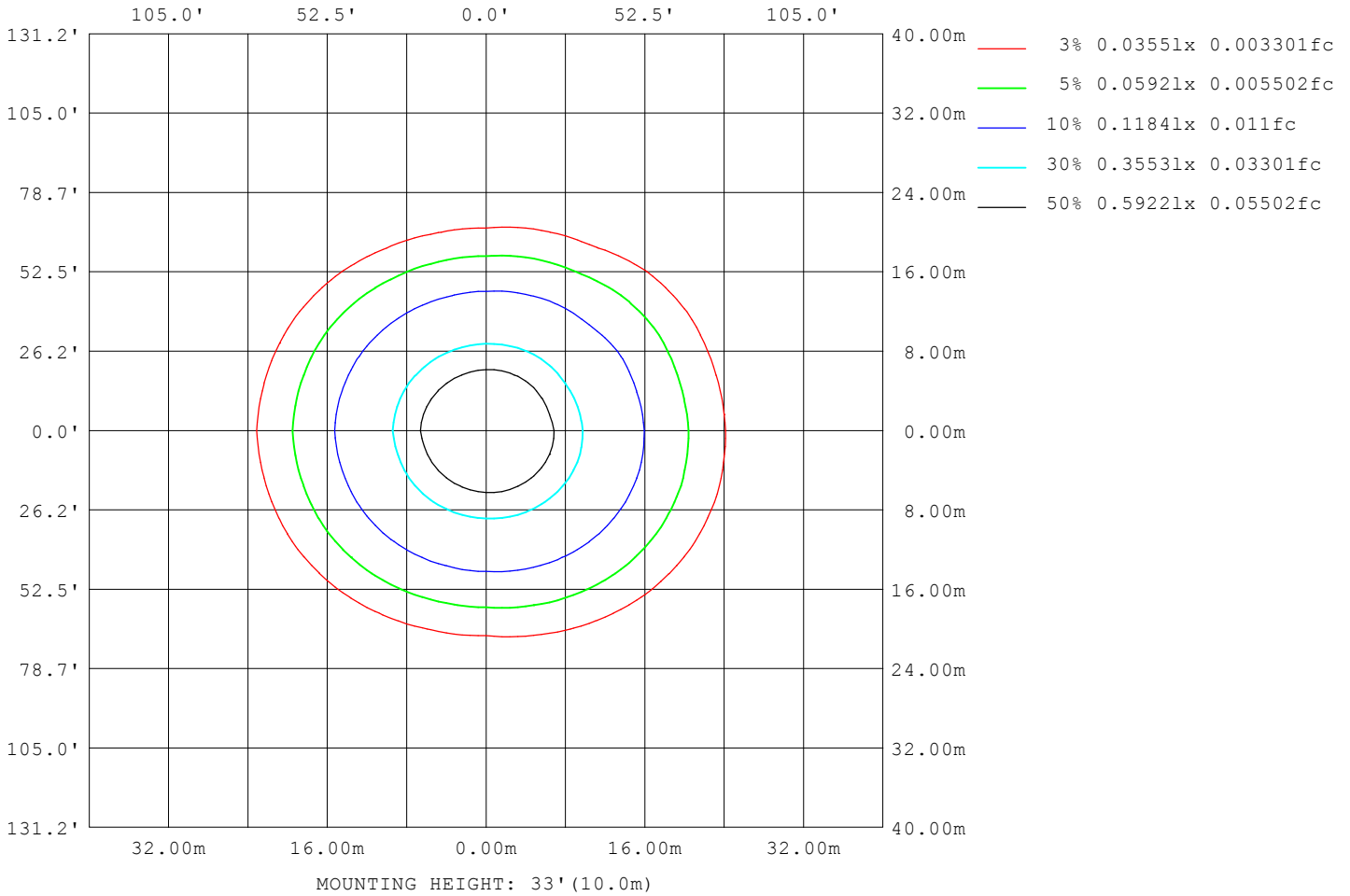
Note: The Curves indicate the illuminated area and the average illumination when the luminaire is at different distance.

C Range: 0 - 360DEG
 C Interval: 15.0DEG
 Test Speed: HIGH
 Temperature: 25.3°C
 Operators: DAMIN
 Test Date: 2024-01-30

γ Range: 0 - 180DEG
 γ Interval: 1.0DEG
 Test System: EVERFINE GO-2000B_V1 SYSTEM V2.00.471
 Humidity: 65.0%
 Test Distance: 4.880m [K=1.0000]
 Remarks:

ISOLUX DIAGRAM

NAME: LED Strip	TYPE: Indoor lighting	WEIGHT: 20g
SPEC.: 2835 080LED	DIM.: 500*8*1.2MM	SERIAL No.: 20240125025
MFR.: Hide-a-lite	SUR.: 500*8MM	Shielding Angle:



C Range: 0 - 360DEG
 C Interval: 15.0DEG
 Test Speed: HIGH
 Temperature: 25.3°C
 Operators: DAMIN
 Test Date: 2024-01-30

γ Range: 0 - 180DEG
 γ Interval: 1.0DEG
 Test System: EVERFINE GO-2000B_V1 SYSTEM V2.00.471
 Humidity: 65.0%
 Test Distance: 4.880m [K=1.0000]
 Remarks:

LED Avg.L Report

NAME: LED Strip	TYPE: Indoor lighting	WEIGHT: 20g
SPEC.: 2835 080LED	DIM.: 500*8*1.2MM	SERIAL No.: 20240125025
MFR.: Hide-a-lite	SUR.: 500*8MM	Shielding Angle:

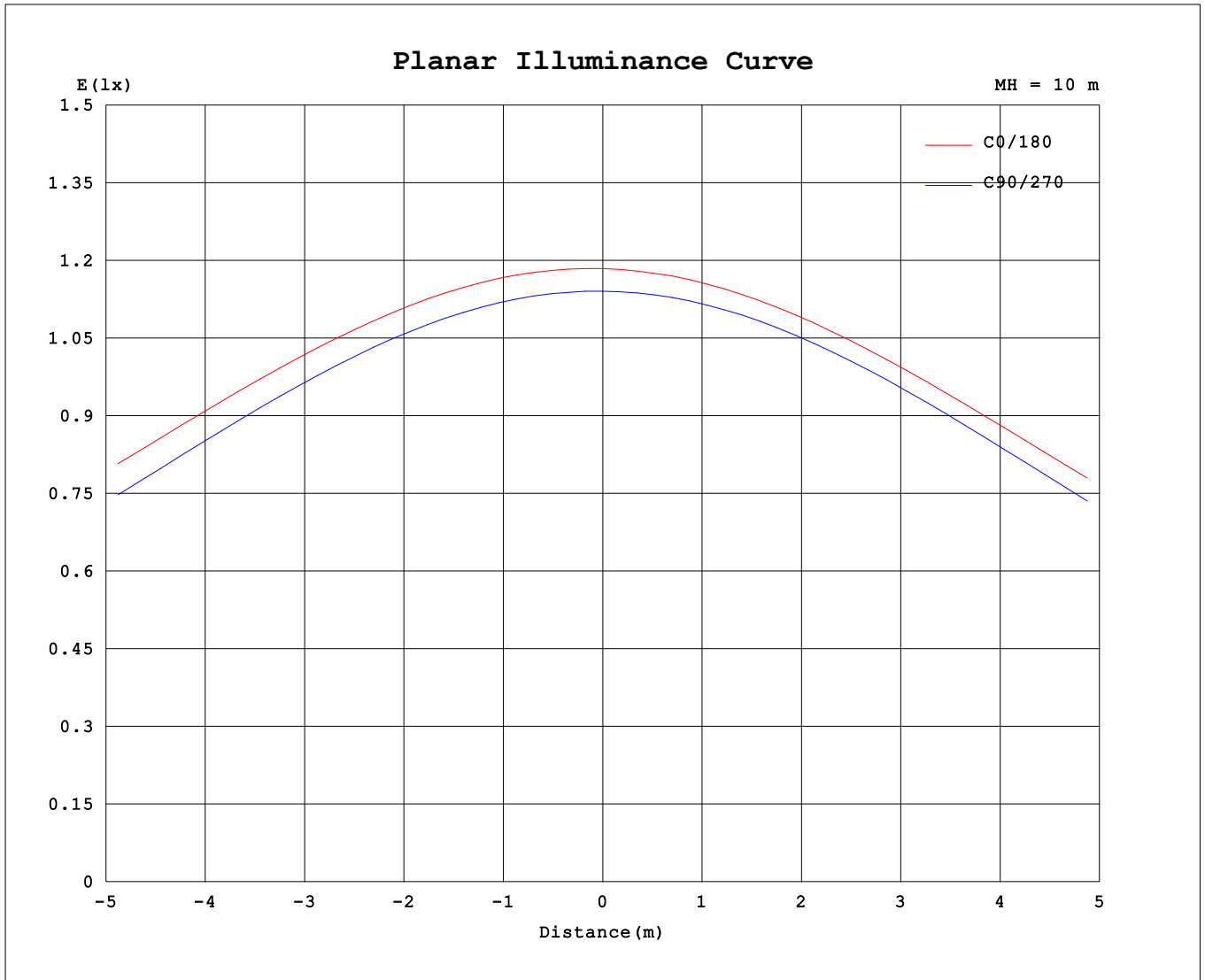
AvgL	cd/m2
L_0~180 (65) av	18705
L_0~180 (75) av	23463
L_0~180 (85) av	55174
L_90~270 (65) av	11930
L_90~270 (75) av	9626
L_90~270 (85) av	7947
L_45 (65) av	15960
L_45 (75) av	18747
L_45 (85) av	37358

Standard: GB/T 29293-2012

C Range: 0 - 360DEG
 C Interval: 15.0DEG
 Test Speed: HIGH
 Temperature:25.3°C
 Operators:DAMIN
 Test Date:2024-01-30

γ Range: 0 - 180DEG
 γ Interval: 1.0DEG
 Test System:EVERFINE GO-2000B_V1 SYSTEM V2.00.471
 Humidity:65.0%
 Test Distance:4.880m [K=1.0000]
 Remarks:

Planar Illuminance Curve



C Range: 0 - 360DEG
 C Interval: 15.0DEG
 Test Speed: HIGH
 Temperature: 25.3°C
 Operators: DAMIN
 Test Date: 2024-01-30

γ Range: 0 - 180DEG
 γ Interval: 1.0DEG
 Test System: EVERFINE GO-2000B_V1 SYSTEM V2.00.471
 Humidity: 65.0%
 Test Distance: 4.880m [K=1.0000]
 Remarks:

LUMINOUS DISTRIBUTION INTENSITY DATA

NAME: LED Strip	TYPE: Indoor lighting	WEIGHT: 20g
SPEC.: 2835 080LED	DIM.: 500*8*1.2MM	SERIAL No.: 20240125025
MFR.: Hide-a-lite	SUR.: 500*8MM	Shielding Angle:

Table--1

UNIT: cd

C (DEG) \ γ (DEG)	0	15	30	45	60	75	90	105	120	135	150	165	180	195	210	225	240	255	270
0	118	118	117	116	115	115	114	114	114	114	115	115	118	118	117	116	115	115	114
5	119	118	117	116	115	115	114	113	113	113	114	114	118	117	116	115	114	114	113
10	118	118	117	116	114	114	113	112	112	112	112	113	116	115	114	113	112	112	112
15	117	117	115	114	113	112	111	110	109	110	110	110	114	113	112	111	110	109	110
20	115	115	113	112	110	109	108	107	106	107	107	108	111	109	109	107	106	106	106
25	112	112	110	109	107	105	104	103	103	103	104	105	108	106	105	103	102	102	102
30	109	109	107	105	103	101	99.1	98.1	98.0	98.9	100	101	105	103	101	98.6	97.3	96.6	97.3
35	105	105	104	101	98.0	95.5	93.5	92.6	93.0	94.5	96.0	97.3	101	98.8	96.4	93.6	91.8	90.8	91.4
40	101	101	99.1	95.5	92.2	89.2	86.9	86.2	87.2	89.2	91.0	92.4	95.6	93.6	91.2	88.0	85.7	84.1	84.7
45	95.9	96.3	93.8	89.8	85.8	82.1	79.4	79.0	80.3	82.6	84.4	86.0	89.3	86.8	84.5	81.2	78.7	76.7	77.2
50	89.8	90.2	87.5	83.6	78.5	74.2	71.0	70.8	72.4	75.1	77.2	79.1	82.1	79.5	77.0	73.4	70.6	68.5	68.6
55	83.1	83.5	80.3	76.0	70.3	65.1	61.7	61.7	63.9	67.0	69.8	71.8	74.6	71.9	69.4	65.4	61.8	59.5	59.4
60	75.5	76.0	72.8	67.6	61.4	55.7	51.8	52.2	55.1	58.9	62.1	64.2	66.8	64.3	61.5	57.3	52.8	50.1	49.6
65	67.5	67.8	64.8	59.2	52.2	45.8	41.3	42.4	46.2	50.7	54.6	56.8	59.0	56.7	53.8	49.2	43.9	40.3	39.3
70	59.3	59.6	56.4	50.7	43.1	35.7	30.7	32.6	37.4	43.4	47.7	50.0	51.9	49.8	46.6	41.6	35.4	30.3	28.9
75	51.6	51.8	48.5	42.6	34.2	25.9	20.8	23.6	29.9	36.9	41.3	43.9	45.5	43.5	40.2	34.9	28.0	21.2	19.0
80	44.6	44.5	41.2	35.4	26.7	17.6	12.5	16.2	23.9	30.8	35.3	38.3	39.8	37.6	34.0	28.9	22.0	13.9	10.5
85	40.3	39.9	35.9	29.7	20.8	11.6	6.66	10.8	18.7	26.2	31.8	35.4	36.6	34.2	30.1	24.0	16.7	8.83	4.43
90	38.1	37.4	33.3	26.7	17.6	8.01	2.56	7.40	15.4	23.0	28.8	32.4	33.6	31.1	27.0	20.7	13.3	5.33	1.31
95	35.2	34.5	30.3	23.7	15.3	6.05	1.24	3.81	11.0	19.3	24.8	28.2	29.5	27.1	23.2	17.1	9.78	2.43	0.76
100	31.2	30.5	26.4	19.7	9.72	3.03	1.77	0.83	3.90	7.87	11.4	15.7	18.6	16.4	12.7	7.42	2.69	0.92	0.71
105	24.9	23.8	18.0	9.57	3.94	1.83	0.55	0.77	2.75	3.53	4.94	6.39	6.15	5.53	4.06	2.21	1.11	0.76	0.70
110	10.9	10.5	7.27	3.99	1.61	2.48	0.62	0.69	1.01	2.70	2.95	3.33	2.26	2.12	1.61	1.16	0.88	0.75	0.79
115	4.52	4.62	2.71	2.03	0.93	0.78	0.69	0.73	0.92	2.48	2.56	2.48	1.09	1.15	1.05	0.98	0.93	0.79	1.04
120	1.89	2.10	1.19	0.97	0.89	0.84	0.76	0.79	0.91	1.30	2.42	2.32	0.99	1.02	1.02	1.00	0.96	0.86	1.16
125	1.06	1.03	0.96	0.96	0.92	0.90	0.83	0.85	0.92	1.01	2.26	2.22	1.02	1.02	1.05	1.04	1.01	0.93	1.29
130	0.96	1.12	0.98	0.98	0.96	0.95	0.89	0.91	0.95	1.04	1.55	2.12	1.05	1.05	1.10	1.09	1.05	0.99	1.42
135	1.00	1.03	1.02	1.03	1.02	1.00	0.96	0.98	1.00	1.09	1.13	1.97	1.10	1.09	1.15	1.13	1.09	1.04	1.53
140	1.04	1.08	1.08	1.09	1.09	1.06	1.03	1.24	1.06	1.12	1.15	1.37	1.13	1.13	1.20	1.18	1.14	1.10	1.64
145	1.09	1.12	1.14	1.16	1.15	1.12	1.10	1.59	1.12	1.16	1.20	1.21	1.18	1.18	1.25	1.21	1.18	1.17	1.72
150	1.14	1.15	1.18	1.21	1.22	2.00	2.26	1.87	1.18	1.21	1.25	1.27	1.22	1.23	1.29	1.24	1.23	1.28	1.80
155	1.20	1.21	1.24	1.26	1.73	1.98	2.27	2.06	1.29	1.27	1.27	1.32	1.27	1.27	1.33	1.28	1.27	1.46	1.88
160	1.26	1.26	1.29	1.35	1.75	1.98	2.29	2.17	1.76	1.32	1.31	1.36	1.32	1.31	1.36	1.33	1.32	1.61	1.95
165	1.32	1.32	1.33	1.38	1.76	1.99	2.29	2.25	2.10	1.51	1.37	1.41	1.37	1.35	1.38	1.36	1.36	1.71	2.03
170	1.37	1.37	1.36	1.40	1.76	2.00	2.24	2.31	2.30	2.05	1.49	1.44	1.40	1.39	1.41	1.39	1.43	1.81	2.07
175	1.41	1.42	1.39	1.43	1.70	1.97	2.22	2.30	2.42	2.31	2.10	1.66	1.43	1.42	1.43	1.41	1.52	1.89	2.06
180	1.45	1.44	1.43	1.43	1.66	1.88	2.20	2.31	2.44	2.45	2.28	2.08	1.44	1.44	1.43	1.43	1.59	1.95	2.12

C Range: 0 - 360DEG
 C Interval: 15.0DEG
 Test Speed: HIGH
 Temperature: 25.3°C
 Operators: DAMIN
 Test Date: 2024-01-30

γ Range: 0 - 180DEG
 γ Interval: 1.0DEG
 Test System: EVERFINE GO-2000B_V1 SYSTEM V2.00.471
 Humidity: 65.0%
 Test Distance: 4.880m [K=1.0000]
 Remarks:

LUMINOUS DISTRIBUTION INTENSITY DATA

NAME: LED Strip	TYPE: Indoor lighting	WEIGHT: 20g
SPEC.: 2835 080LED	DIM.: 500*8*1.2MM	SERIAL No.: 20240125025
MFR.: Hide-a-lite	SUR.: 500*8MM	Shielding Angle:

Table--2

UNIT: cd

C (DEG) \ γ (DEG)	285	300	315	330	345														
0	114	114	114	115	115														
5	113	114	114	115	115														
10	112	113	113	114	114														
15	110	111	112	113	113														
20	107	108	109	110	111														
25	103	105	106	107	107														
30	98.3	100	102	104	103														
35	92.8	95.2	97.5	98.6	100														
40	86.4	89.4	92.0	93.4	96.6														
45	79.2	82.9	85.4	89.1	91.9														
50	71.2	75.5	77.8	84.1	86.6														
55	62.4	66.8	70.0	77.4	79.5														
60	53.0	57.3	64.2	70.1	72.2														
65	43.1	47.2	56.8	62.9	64.7														
70	32.7	38.4	48.6	53.9	56.9														
75	22.6	32.1	40.8	45.9	50.1														
80	13.7	24.7	32.2	38.6	41.8														
85	9.23	17.2	24.2	32.7	37.9														
90	5.83	14.4	23.7	31.1	33.3														
95	3.96	13.1	22.6	29.9	33.3														
100	1.51	10.1	18.7	25.2	30.3														
105	1.29	3.40	9.41	19.4	22.2														
110	1.32	1.90	4.16	8.04	11.3														
115	1.56	1.84	2.36	3.96	5.61														
120	1.69	1.89	2.08	2.65	3.26														
125	1.81	2.02	2.08	2.37	2.53														
130	1.94	2.19	2.07	2.31	2.38														
135	2.00	2.28	2.18	2.26	2.27														
140	2.02	2.35	2.44	2.26	2.07														
145	2.08	2.37	2.50	2.47	2.38														
150	2.16	2.35	2.50	2.47	2.37														
155	2.23	2.38	2.42	2.40	2.31														
160	2.28	2.38	2.42	2.32	2.27														
165	2.30	2.37	2.39	2.31	2.29														
170	2.30	2.37	2.38	2.29	2.22														
175	2.30	2.36	2.41	2.27	2.20														
180	2.36	2.36	2.48	2.28	2.06														

C Range: 0 - 360DEG
 C Interval: 15.0DEG
 Test Speed: HIGH
 Temperature:25.3°C
 Operators:DAMIN
 Test Date:2024-01-30

γ Range: 0 - 180DEG
 γ Interval: 1.0DEG
 Test System:EVERFINE GO-2000B_V1 SYSTEM V2.00.471
 Humidity:65.0%
 Test Distance:4.880m [K=1.0000]
 Remarks: