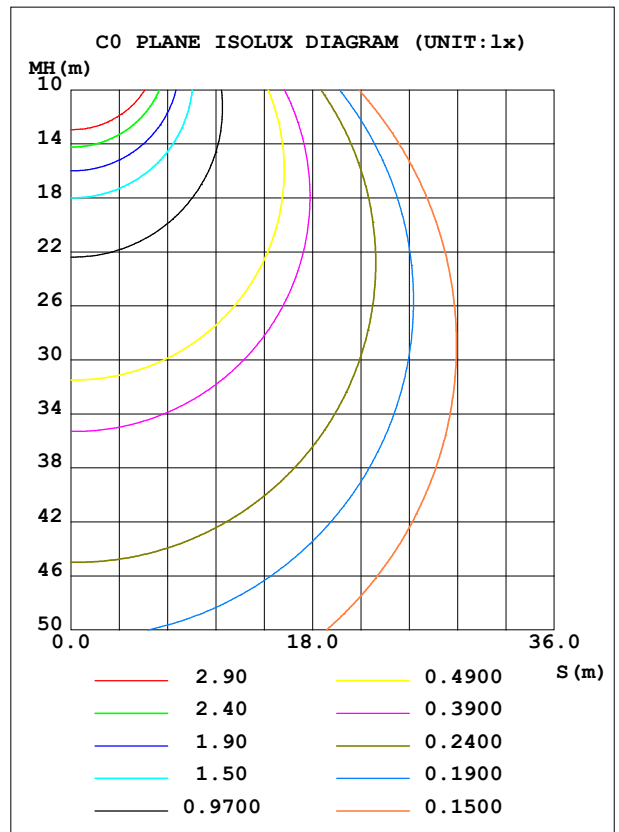
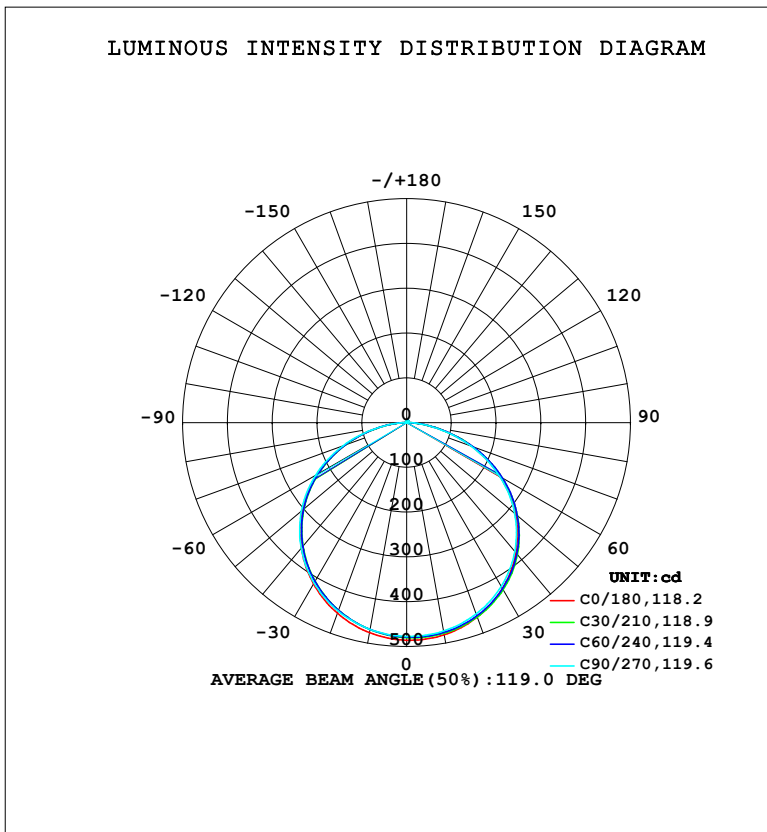


LUMINAIRE PHOTOMETRIC TEST REPORT

NAME: LED Strip	TYPE: Indoor lighting	WEIGHT: 20g
SPEC.: 2835 200LED	DIM.: 500*10*1.2MM	SERIAL No.: 20231114017
MFR.: EVERFINE	SUR.: 500*10MM	Shielding Angle:

DATA OF LAMP		PHOTOMETRIC DATA			
MODEL: 24 (WCP) -HR-HQ5-CV-HE-EP		Imax (cd)	486.9	S/MH (C0/180)	1.27
NOMINAL POWER (W)	9.30654	LOR (%)	100.0	S/MH (C90/270)	1.29
RATED VOLTAGE (V)	DC 24V	TOTAL FLUX (lm)	1492.2	η UP, DN (C0-180)	0.7,49.8
NOMINAL FLUX (lm)	1492.2	CIE CLASS	DIRECT	η UP, DN (C180-360)	0.7,48.9
LAMPS INSIDE	1	η up (%)	1.4	CIBSE SHR NOM	1.50
TEST VOLTAGE (V)	DC 24V	η down (%)	98.6	CIBSE SHR MAX	1.50



C Range: 0 - 360DEG
 C Interval: 15.0DEG
 Test Speed: HIGH
 Temperature: 25.3°C
 Operators: DAMIN
 Test Date: 2023-11-15

γ Range: 0 - 180DEG
 γ Interval: 1.0DEG
 Test System: EVERFINE GO-2000B_V1 SYSTEM V2.00.471
 Humidity: 65.0%
 Test Distance: 4.880m [K=1.0000]
 Remarks:

ZONAL FLUX DIAGRAM

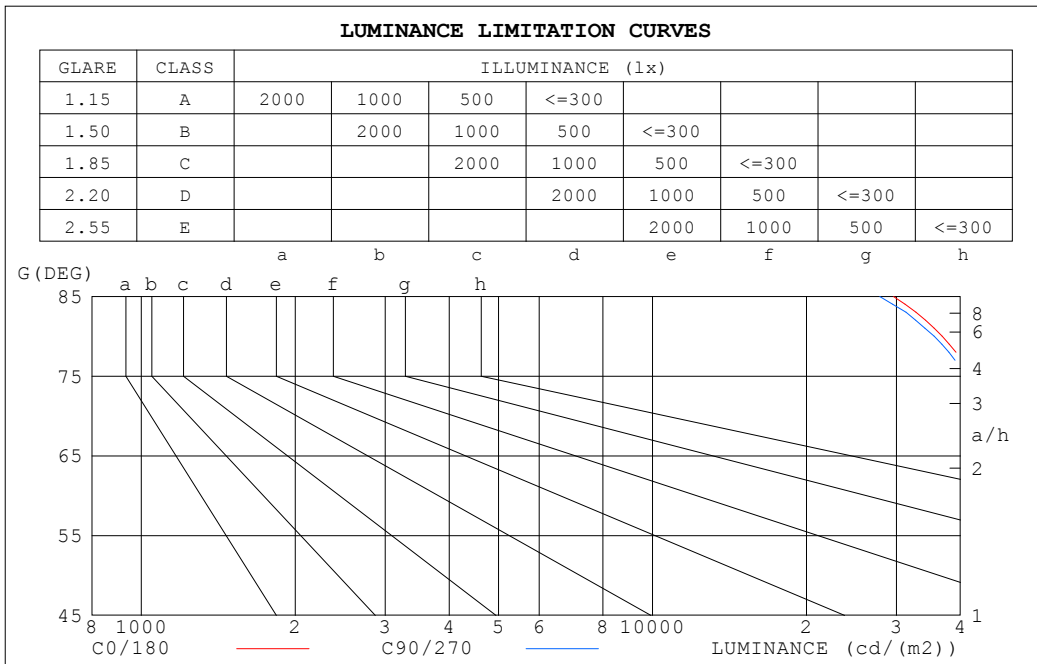
ZONAL FLUX DIAGRAM:

γ	C0	C45	C90	C135	C180	C225	C270	C315	γ	Φ zone	Φ total	%lum,lamp
10	481.2	476.7	472.7	471.8	476.3	467.9	468.9	474.6	0- 10	45.56	45.56	3.05,3.05
20	461.7	460.7	454.4	450.6	452.9	444.2	447.6	456.1	10- 20	131.5	177.1	11.9,11.9
30	427.8	430.5	422.3	415.9	415.9	407.9	413.5	424.0	20- 30	202.2	379.2	25.4,25.4
40	379.4	385.4	375.9	367.5	365.9	359.4	366.6	377.8	30- 40	248.9	628.1	42.1,42.1
50	317.2	324.9	315.0	305.6	303.8	298.6	306.9	317.4	40- 50	264.7	892.8	59.8,59.8
60	241.5	248.0	239.8	230.5	229.9	226.2	234.4	240.6	50- 60	245.7	1139	76.3,76.3
70	154.3	159.0	152.2	145.4	146.3	144.3	150.7	152.9	60- 70	192.1	1331	89.2,89.2
80	64.06	66.32	61.72	58.03	60.58	60.27	63.50	66.43	70- 80	111.0	1442	96.6,96.6
90	3.657	4.760	3.217	3.918	3.538	4.374	3.897	5.607	80- 90	30.19	1472	98.6,98.6
100	1.801	1.700	1.751	1.958	1.846	1.860	1.858	1.908	90-100	2.540	1474	98.8,98.8
110	2.188	2.210	2.309	2.298	2.391	2.445	2.472	2.389	100-110	2.240	1477	99,99
120	2.769	2.801	2.919	2.890	2.991	3.051	3.102	2.994	110-120	2.643	1479	99.1,99.1
130	3.346	3.383	3.505	3.483	3.570	3.635	3.692	3.586	120-130	2.911	1482	99.3,99.3
140	3.921	3.975	4.078	4.066	4.122	4.182	4.237	4.160	130-140	2.966	1485	99.5,99.5
150	4.475	4.525	4.595	4.618	4.633	4.680	4.722	4.688	140-150	2.752	1488	99.7,99.7
160	5.010	5.005	5.052	5.114	5.124	5.112	5.140	5.144	150-160	2.260	1490	99.9,99.9
170	5.463	5.420	5.445	5.538	5.539	5.479	5.496	5.539	160-170	1.508	1492	100,100
180	5.745	5.688	5.693	5.772	5.745	5.680	5.691	5.780	170-180	0.5383	1492	100,100
DEG	LUMINOUS INTENSITY:cd									UNIT:lm		

C Range: 0 - 360DEG
 C Interval: 15.0DEG
 Test Speed: HIGH
 Temperature:25.3°C
 Operators:DAMIN
 Test Date:2023-11-15

γ Range: 0 - 180DEG
 γ Interval: 1.0DEG
 Test System:EVERFINE GO-2000B_V1 SYSTEM V2.00.471
 Humidity:65.0%
 Test Distance:4.880m [K=1.0000]
 Remarks:

LUMINANCE LIMITATION CURVES



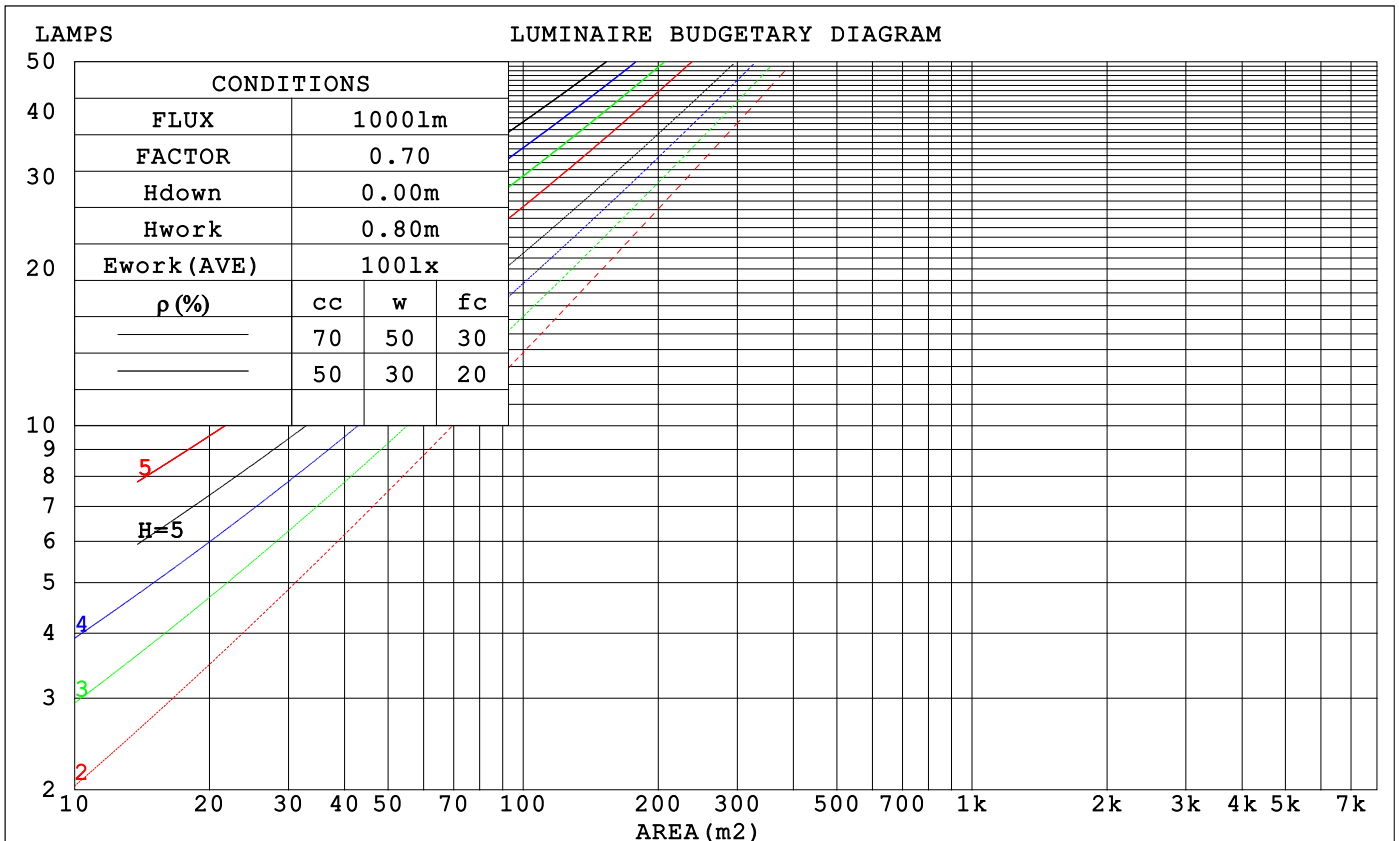
LUMINANCE cd/(m2)		
G (DEG)	C0/180	C90/270
85	29618	27835
80	36890	35545
75	41924	41007
70	45100	44504
65	47124	46717
60	48297	47967
55	48988	48669
50	49343	49005
45	49496	49107

C Range: 0 - 360DEG
 C Interval: 15.0DEG
 Test Speed: HIGH
 Temperature: 25.3°C
 Operators: DAMIN
 Test Date: 2023-11-15

γ Range: 0 - 180DEG
 γ Interval: 1.0DEG
 Test System: EVERFINE GO-2000B_V1 SYSTEM V2.00.471
 Humidity: 65.0%
 Test Distance: 4.880m [K=1.0000]
 Remarks:

CU AND LUMINAIRE BUDGETARY ESTIMATE DIAGRAM

ρ_{cc}	80%			70%			50%			30%			10%			0
ρ_w	50%	30%	10%	50%	30%	10%	50%	30%	10%	50%	30%	10%	50%	30%	10%	0
ρ_{fc}	20%			20%			20%			20%			20%			0
RCR	RCR:Room Cavity Ratio			Coefficients of Utilization(CU)												
0.0	1.19	1.19	1.19	1.16	1.16	1.16	1.10	1.10	1.10	1.05	1.05	1.05	1.01	1.01	1.01	.99
1.0	1.03	.99	.95	1.01	.97	.93	.96	.93	.90	.92	.89	.87	.88	.86	.84	.82
2.0	.90	.83	.77	.88	.81	.76	.84	.78	.74	.80	.76	.72	.77	.73	.70	.68
3.0	.78	.70	.63	.77	.69	.63	.73	.67	.61	.70	.65	.60	.68	.63	.59	.57
4.0	.69	.60	.53	.68	.59	.53	.65	.58	.52	.62	.56	.51	.60	.55	.50	.48
5.0	.62	.52	.46	.60	.52	.45	.58	.51	.45	.56	.49	.44	.54	.48	.43	.41
6.0	.55	.46	.40	.54	.46	.39	.52	.45	.39	.50	.44	.39	.49	.43	.38	.36
7.0	.50	.41	.35	.49	.41	.35	.47	.40	.34	.46	.39	.34	.44	.38	.34	.32
8.0	.46	.37	.31	.45	.37	.31	.43	.36	.31	.42	.35	.30	.41	.35	.30	.28
9.0	.42	.33	.28	.41	.33	.28	.40	.33	.27	.39	.32	.27	.38	.31	.27	.25
10.0	.39	.30	.25	.38	.30	.25	.37	.30	.25	.36	.29	.25	.35	.29	.25	.23



C Range: 0 - 360DEG
 C Interval: 15.0DEG
 Test Speed: HIGH
 Temperature:25.3°C
 Operators:DAMIN
 Test Date:2023-11-15

γ Range: 0 - 180DEG
 γ Interval: 1.0DEG
 Test System:EVERFINE GO-2000B_V1 SYSTEM V2.00.471
 Humidity:65.0%
 Test Distance:4.880m [K=1.0000]
 Remarks:

WEC AND CCEC

ρ_{cc}	80%			70%			50%			30%			10%			0
ρ_w	50%	30%	10%	50%	30%	10%	50%	30%	10%	50%	30%	10%	50%	30%	10%	0
ρ_{fc}	20%			20%			20%			20%			20%			0
RCR	RCR:Room Cavity Ratio						Wall Exitance Coefficients (WEC)									
0.0																
1.0	.317	.180	.057	.309	.176	.056	.295	.169	.054	.282	.163	.052	.270	.157	.050	
2.0	.297	.163	.050	.291	.160	.049	.278	.155	.048	.267	.150	.047	.256	.145	.046	
3.0	.275	.146	.044	.269	.144	.043	.258	.140	.042	.247	.136	.042	.238	.132	.041	
4.0	.253	.131	.039	.248	.130	.038	.238	.126	.038	.229	.123	.037	.220	.120	.036	
5.0	.233	.119	.034	.229	.117	.034	.220	.115	.034	.212	.112	.033	.204	.109	.033	
6.0	.216	.108	.031	.212	.107	.031	.204	.105	.030	.197	.102	.030	.190	.100	.030	
7.0	.201	.099	.028	.197	.098	.028	.190	.096	.028	.184	.094	.027	.177	.092	.027	
8.0	.188	.092	.026	.184	.091	.026	.178	.089	.025	.172	.087	.025	.166	.085	.025	
9.0	.176	.085	.024	.173	.084	.024	.167	.083	.023	.162	.081	.023	.156	.079	.023	
10.0	.165	.079	.022	.162	.078	.022	.157	.077	.022	.152	.076	.021	.148	.074	.021	

ρ_{cc}	80%			70%			50%			30%			10%			0
ρ_w	50%	30%	10%	50%	30%	10%	50%	30%	10%	50%	30%	10%	50%	30%	10%	0
ρ_{fc}	20%			20%			20%			20%			20%			0
RCR	RCR:Room Cavity Ratio						Ceiling Cavity Exitance Coefficients (CCEC)									
0.0	.201	.201	.201	.172	.172	.172	.117	.117	.117	.067	.067	.067	.022	.022	.022	
1.0	.191	.167	.144	.164	.143	.124	.112	.098	.086	.064	.057	.050	.021	.018	.016	
2.0	.184	.142	.108	.157	.123	.093	.108	.085	.065	.062	.049	.038	.020	.016	.012	
3.0	.176	.125	.084	.151	.108	.073	.104	.075	.051	.060	.044	.030	.019	.014	.010	
4.0	.168	.112	.068	.145	.097	.059	.099	.067	.042	.057	.039	.025	.019	.013	.008	
5.0	.161	.101	.057	.138	.088	.050	.095	.061	.035	.055	.036	.021	.018	.012	.007	
6.0	.154	.093	.049	.132	.081	.043	.091	.056	.030	.053	.033	.018	.017	.011	.006	
7.0	.147	.086	.044	.126	.075	.038	.087	.052	.027	.051	.031	.016	.016	.010	.005	
8.0	.140	.080	.039	.121	.070	.034	.084	.049	.024	.049	.029	.014	.016	.009	.005	
9.0	.134	.076	.036	.116	.066	.031	.080	.046	.022	.047	.027	.013	.015	.009	.004	
10.0	.129	.071	.033	.111	.062	.029	.077	.044	.021	.045	.026	.012	.015	.008	.004	

C Range: 0 - 360DEG
 C Interval: 15.0DEG
 Test Speed: HIGH
 Temperature: 25.3°C
 Operators: DAMIN
 Test Date: 2023-11-15

γ Range: 0 - 180DEG
 γ Interval: 1.0DEG
 Test System: EVERFINE GO-2000B_V1 SYSTEM V2.00.471
 Humidity: 65.0%
 Test Distance: 4.880m [K=1.0000]
 Remarks:

UGR(Unified Glare Rating) Table

ceiling/cavity	0.7	0.7	0.5	0.5	0.3	0.7	0.7	0.5	0.5	0.3
walls	0.5	0.3	0.5	0.3	0.3	0.5	0.3	0.5	0.3	0.3
working plane	0.2	0.2	0.2	0.2	0.2	0.2	0.2	0.2	0.2	0.2
Room dimensions	Viewed crosswise					Viewed endwise				
x = 2H y = 2H	25.2	26.7	25.5	27.0	27.2	25.2	26.7	25.5	26.9	27.2
3H	26.8	28.2	27.1	28.5	28.7	26.8	28.2	27.1	28.5	28.7
4H	27.4	28.8	27.8	29.1	29.3	27.4	28.8	27.7	29.0	29.3
6H	27.9	29.1	28.2	29.4	29.7	27.8	29.1	28.2	29.4	29.7
8H	28.0	29.2	28.4	29.5	29.9	27.9	29.2	28.3	29.5	29.8
12H	28.1	29.2	28.4	29.6	29.9	28.0	29.2	28.4	29.5	29.8
4H 2H	25.9	27.2	26.2	27.5	27.8	25.9	27.2	26.2	27.5	27.8
3H	27.6	28.8	28.0	29.1	29.5	27.6	28.8	28.0	29.1	29.5
4H	28.4	29.5	28.8	29.8	30.2	28.4	29.5	28.8	29.8	30.2
6H	29.0	29.9	29.4	30.3	30.7	28.9	29.9	29.3	30.3	30.6
8H	29.1	30.0	29.6	30.4	30.8	29.1	30.0	29.5	30.4	30.8
12H	29.2	30.1	29.7	30.5	30.9	29.2	30.0	29.6	30.4	30.8
8H 4H	28.7	29.6	29.1	30.0	30.4	28.7	29.6	29.1	29.9	30.4
6H	29.4	30.1	29.9	30.6	31.0	29.4	30.1	29.8	30.5	31.0
8H	29.7	30.3	30.1	30.8	31.2	29.6	30.3	30.1	30.7	31.2
12H	29.8	30.4	30.3	30.9	31.4	29.8	30.3	30.3	30.8	31.3
12H 4H	28.7	29.5	29.1	29.9	30.4	28.7	29.5	29.1	29.9	30.3
6H	29.4	30.1	29.9	30.6	31.0	29.4	30.1	29.9	30.5	31.0
8H	29.7	30.3	30.2	30.8	31.3	29.7	30.3	30.2	30.7	31.2
Variations with the observer position at spacings(CIE Pub.117):										
S = 1.0H	+ 0.1 / - 0.2					+ 0.1 / - 0.2				
1.5H	+ 0.2 / - 0.3					+ 0.2 / - 0.4				
2.0H	+ 0.2 / - 0.4					+ 0.2 / - 0.4				

CIE Pub.117, 1492 lm Total Lamp Luminous Flux Correct (8log(F/F0) = 1.4)
 Area: 0.01 m2

C Range: 0 - 360DEG
 C Interval: 15.0DEG
 Test Speed: HIGH
 Temperature:25.3°C
 Operators:DAMIN
 Test Date:2023-11-15

γ Range: 0 - 180DEG
 γ Interval: 1.0DEG
 Test System:EVERFINE GO-2000B_V1 SYSTEM V2.00.471
 Humidity:65.0%
 Test Distance:4.880m [K=1.0000]
 Remarks:

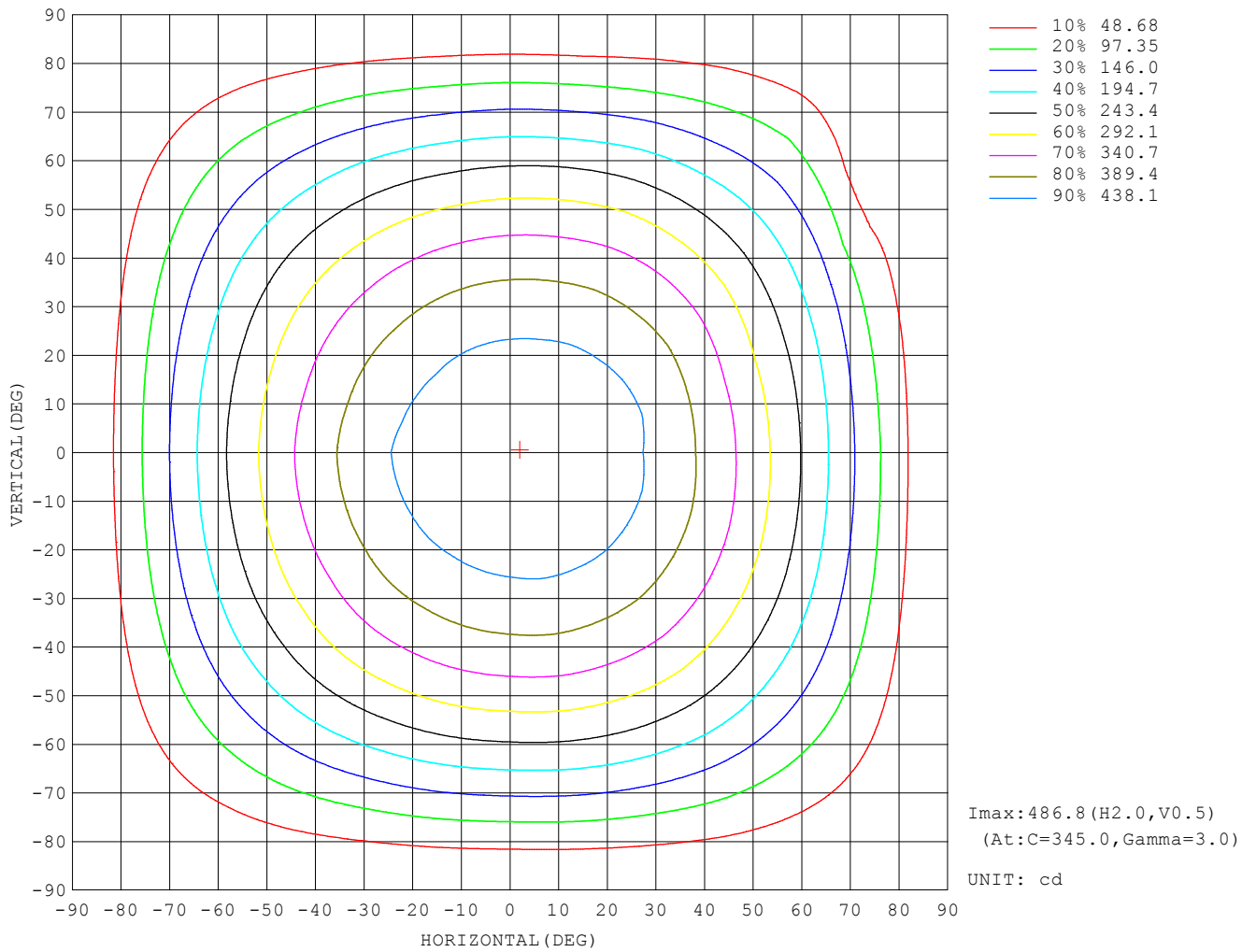
UTILIZATION FACTORS TABLE

REFLECTANCE										
Ceiling	0.8	0.8	0.8	0.7	0.7	0.7	0.5	0.5	0.5	0
Walls	0.7	0.5	0.3	0.7	0.5	0.3	0.7	0.5	0.3	0
Working plane	0.2	0.2	0.2	0.2	0.2	0.2	0.2	0.2	0.2	0
ROOM INDEX	UTILIZATION FACTORS (PERCENT) $k(RI) \times RCR = 5$									
$k = 0.60$	56	44	37	55	44	37	54	43	37	30
0.80	66	54	47	65	54	46	63	53	46	39
1.00	75	63	56	73	63	55	71	64	55	47
1.25	82	71	64	80	70	63	77	69	62	55
1.50	87	77	69	85	76	69	82	74	68	60
2.00	94	85	78	92	84	78	88	81	76	68
2.50	98	90	84	96	88	83	92	86	81	72
3.00	101	94	89	99	93	87	95	89	85	76
4.00	105	100	95	103	98	93	98	94	90	81
5.00	108	103	99	105	101	97	101	97	94	84
ROOM INDEX	UF(total)									Direct
According to DIN EN 13032-2 2004			Suspended				SHRNOM = 1.25			

C Range: 0 - 360DEG
 C Interval: 15.0DEG
 Test Speed: HIGH
 Temperature: 25.3°C
 Operators: DAMIN
 Test Date: 2023-11-15

γ Range: 0 - 180DEG
 γ Interval: 1.0DEG
 Test System: EVERFINE GO-2000B_V1 SYSTEM V2.00.471
 Humidity: 65.0%
 Test Distance: 4.880m [K=1.0000]
 Remarks:

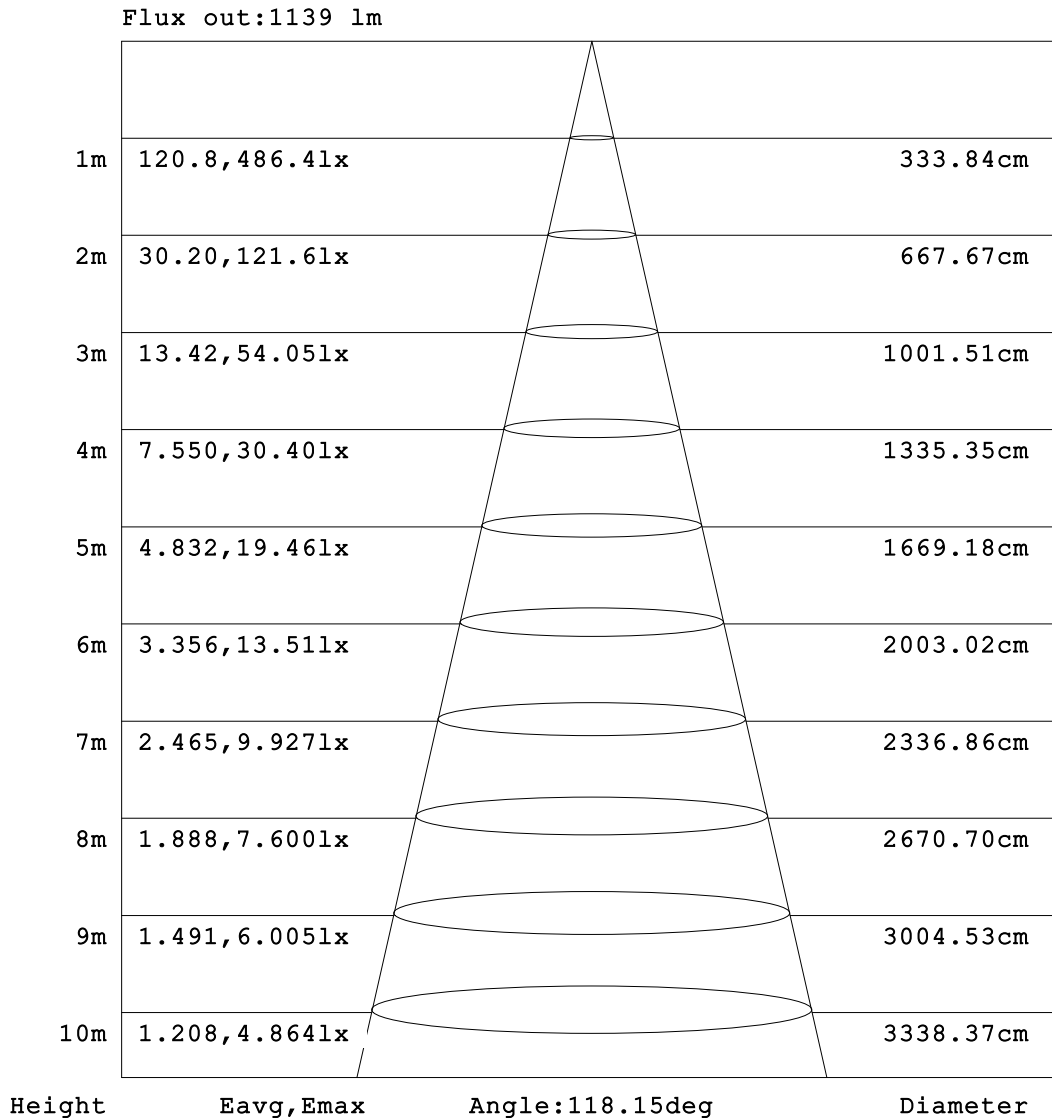
ISOCANDELA DIAGRAM



C Range: 0 - 360DEG
 C Interval: 15.0DEG
 Test Speed: HIGH
 Temperature: 25.3°C
 Operators: DAMIN
 Test Date: 2023-11-15

γ Range: 0 - 180DEG
 γ Interval: 1.0DEG
 Test System: EVERFINE GO-2000B_V1 SYSTEM V2.00.471
 Humidity: 65.0%
 Test Distance: 4.880m [K=1.0000]
 Remarks:

AAI Figure

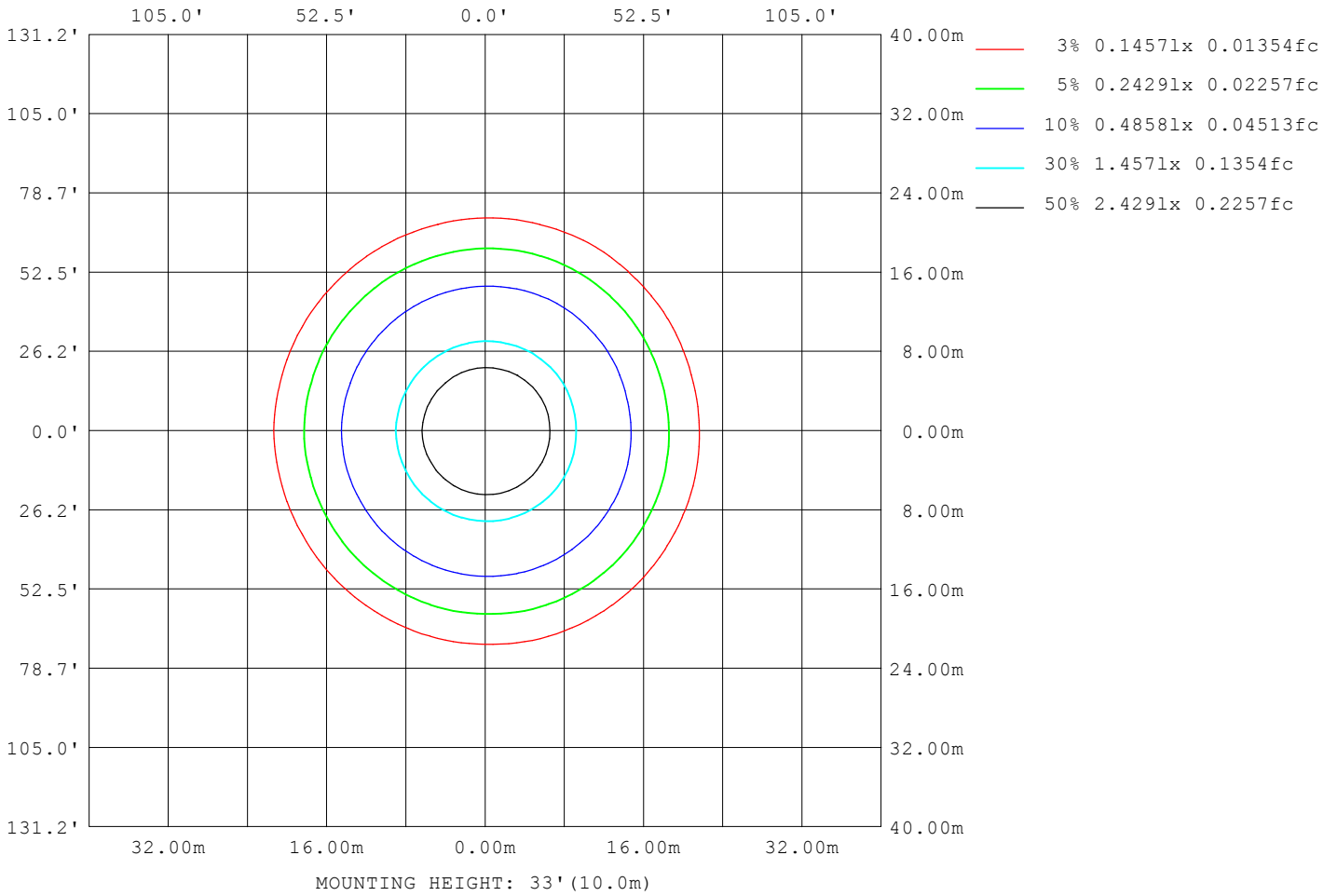


Note:The Curves indicate the illuminated area and the average illumination when the luminaire is at different distance.

C Range: 0 - 360DEG
 C Interval: 15.0DEG
 Test Speed: HIGH
 Temperature:25.3°C
 Operators:DAMIN
 Test Date:2023-11-15

γ Range: 0 - 180DEG
 γ Interval: 1.0DEG
 Test System:EVERFINE GO-2000B_V1 SYSTEM V2.00.471
 Humidity:65.0%
 Test Distance:4.880m [K=1.0000]
 Remarks:

ISOLUX DIAGRAM



C Range: 0 - 360DEG
 C Interval: 15.0DEG
 Test Speed: HIGH
 Temperature: 25.3°C
 Operators: DAMIN
 Test Date: 2023-11-15

γ Range: 0 - 180DEG
 γ Interval: 1.0DEG
 Test System: EVERFINE GO-2000B_V1 SYSTEM V2.00.471
 Humidity: 65.0%
 Test Distance: 4.880m [K=1.0000]
 Remarks:

LED Avg.L Report

NAME: LED Strip	TYPE: Indoor lighting	WEIGHT: 20g
SPEC.: 2835 200LED	DIM.: 500*10*1.2MM	SERIAL No.: 20231114017
MFR.: EVERFINE	SUR.: 500*10MM	Shielding Angle:

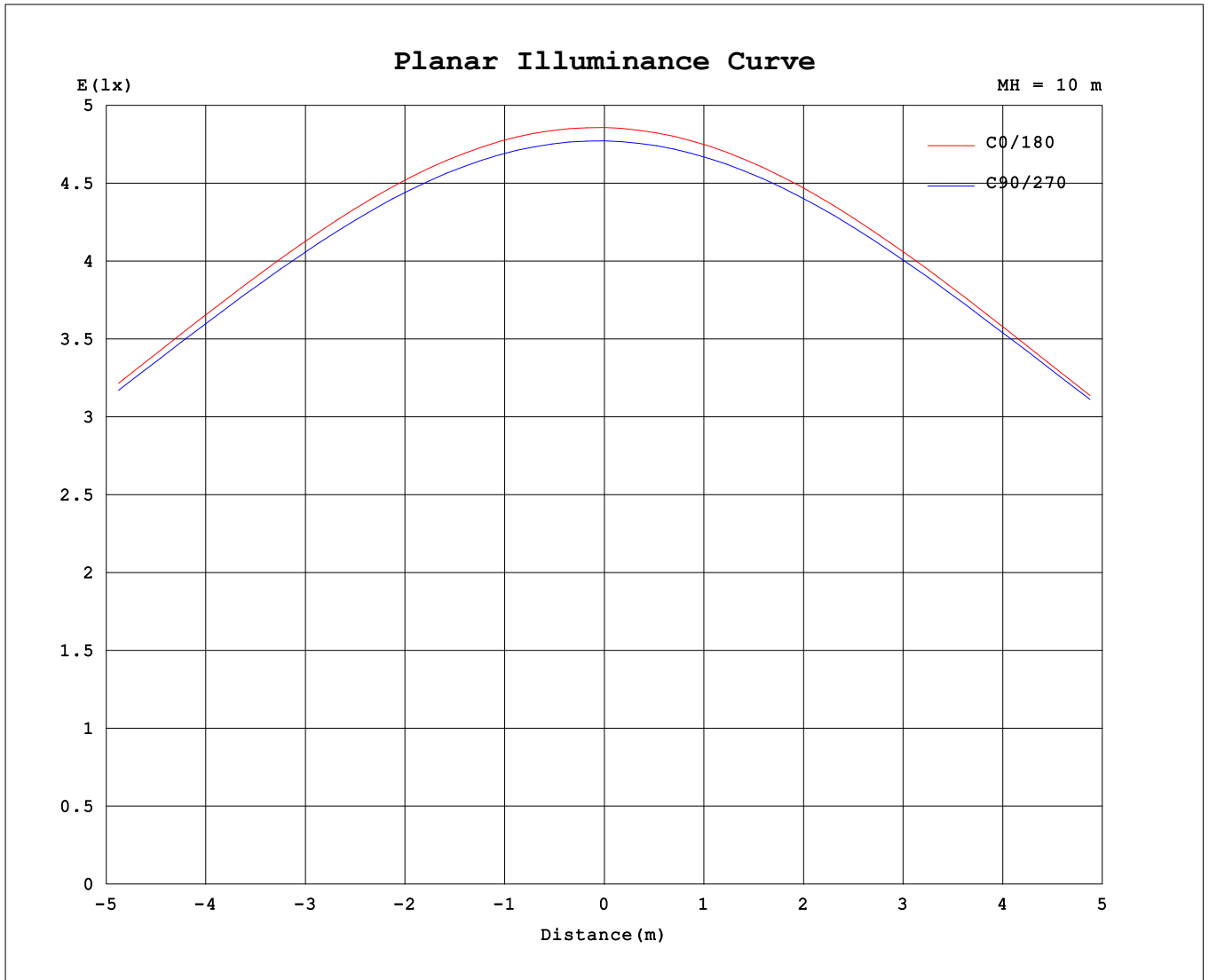
AvgL	cd/m2
L_0~180 (65) av	45935
L_0~180 (75) av	40818
L_0~180 (85) av	29031
L_90~270 (65) av	46275
L_90~270 (75) av	41072
L_90~270 (85) av	29268
L_45 (65) av	45962
L_45 (75) av	40932
L_45 (85) av	29578

Standard: GB/T 29293-2012

C Range: 0 - 360DEG
 C Interval: 15.0DEG
 Test Speed: HIGH
 Temperature:25.3℃
 Operators:DAMIN
 Test Date:2023-11-15

γ Range: 0 - 180DEG
 γ Interval: 1.0DEG
 Test System:EVERFINE GO-2000B_V1 SYSTEM V2.00.471
 Humidity:65.0%
 Test Distance:4.880m [K=1.0000]
 Remarks:

Planar Illuminance Curve



C Range: 0 - 360DEG
 C Interval: 15.0DEG
 Test Speed: HIGH
 Temperature: 25.3°C
 Operators: DAMIN
 Test Date: 2023-11-15

γ Range: 0 - 180DEG
 γ Interval: 1.0DEG
 Test System: EVERFINE GO-2000B_V1 SYSTEM V2.00.471
 Humidity: 65.0%
 Test Distance: 4.880m [K=1.0000]
 Remarks:

LUMINOUS DISTRIBUTION INTENSITY DATA

Table--1

UNIT: cd

C (DEG) \ γ (DEG)	0	15	30	45	60	75	90	105	120	135	150	165	180	195	210	225	240	255	270
0	486	484	480	479	479	478	477	477	478	480	483	486	486	484	480	479	479	478	477
5	485	485	481	479	479	478	477	476	476	477	480	483	483	480	476	475	475	475	475
10	481	481	478	477	476	475	473	472	471	472	473	475	476	473	469	468	469	469	469
15	473	474	471	470	469	468	465	464	463	463	463	465	466	462	459	458	459	459	460
20	462	464	462	461	459	458	454	452	451	451	450	451	453	448	445	444	446	446	448
25	447	449	448	447	445	444	440	438	436	435	434	434	436	431	429	428	429	431	432
30	428	431	431	431	428	426	422	420	417	416	414	414	416	411	409	408	409	411	413
35	405	409	410	410	407	405	401	398	395	393	391	391	392	388	386	385	387	389	392
40	379	384	385	385	383	381	376	373	369	368	365	365	366	362	360	359	361	364	367
45	350	354	356	357	355	352	347	344	340	338	335	335	336	332	331	330	332	335	338
50	317	321	323	325	323	320	315	312	308	306	302	303	304	300	299	299	301	303	307
55	281	285	286	288	287	284	279	276	272	270	267	267	268	265	264	264	266	268	272
60	241	245	246	248	247	245	240	237	233	231	228	228	230	227	227	226	228	230	234
65	199	202	203	205	204	202	197	195	191	189	187	187	189	187	187	186	188	190	194
70	154	157	157	159	158	157	152	150	147	145	143	144	146	144	145	144	146	147	151
75	109	111	111	112	111	110	106	105	102	101	99.1	100	103	101	102	102	103	104	106
80	64.1	65.6	65.5	66.3	65.2	64.2	61.7	60.7	58.8	58.0	56.9	57.8	60.6	59.7	60.3	60.3	61.1	61.5	63.5
85	25.8	27.3	26.8	27.7	26.4	26.1	24.3	24.3	22.8	22.9	21.9	23.1	24.8	24.0	24.9	24.7	25.8	25.7	26.8
90	3.66	4.28	4.26	4.76	4.29	3.98	3.22	3.69	3.75	3.92	3.83	4.45	3.54	3.59	4.19	4.37	4.63	4.29	3.90
95	2.03	2.01	2.06	2.08	1.78	1.64	1.62	1.73	1.93	2.23	2.72	3.63	2.23	2.39	2.40	2.08	1.82	1.79	1.74
100	1.80	1.76	1.70	1.70	1.71	1.74	1.75	1.77	1.81	1.96	2.26	3.03	1.85	1.85	1.86	1.86	1.88	1.88	1.86
105	1.91	1.90	1.90	1.92	1.94	1.98	2.01	1.99	1.99	2.06	2.35	2.88	2.08	2.10	2.12	2.14	2.14	2.15	2.14
110	2.19	2.19	2.19	2.21	2.24	2.29	2.31	2.30	2.29	2.30	2.42	2.88	2.39	2.41	2.43	2.45	2.46	2.47	2.47
115	2.48	2.48	2.48	2.50	2.54	2.59	2.62	2.61	2.60	2.59	2.60	2.76	2.70	2.72	2.74	2.75	2.77	2.79	2.80
120	2.77	2.76	2.77	2.80	2.82	2.89	2.92	2.91	2.89	2.89	2.89	2.87	2.99	3.01	3.03	3.05	3.07	3.09	3.10
125	3.05	3.05	3.07	3.09	3.12	3.17	3.21	3.20	3.19	3.19	3.17	3.15	3.28	3.30	3.33	3.34	3.37	3.39	3.40
130	3.35	3.35	3.37	3.38	3.42	3.46	3.51	3.50	3.49	3.48	3.47	3.46	3.57	3.59	3.61	3.64	3.66	3.68	3.69
135	3.64	3.65	3.66	3.68	3.71	3.76	3.80	3.79	3.78	3.78	3.77	3.75	3.85	3.87	3.89	3.92	3.94	3.97	3.97
140	3.92	3.95	3.95	3.97	4.00	4.04	4.08	4.08	4.07	4.07	4.06	4.05	4.12	4.14	4.16	4.18	4.21	4.23	4.24
145	4.20	4.24	4.24	4.26	4.27	4.31	4.34	4.35	4.35	4.35	4.34	4.35	4.38	4.39	4.41	4.44	4.46	4.48	4.49
150	4.47	4.52	4.52	4.52	4.53	4.57	4.59	4.61	4.61	4.62	4.62	4.65	4.63	4.64	4.66	4.68	4.70	4.72	4.72
155	4.75	4.78	4.77	4.78	4.78	4.81	4.83	4.85	4.86	4.87	4.89	4.95	4.88	4.87	4.88	4.90	4.92	4.94	4.94
160	5.01	5.02	5.01	5.01	5.01	5.04	5.05	5.07	5.09	5.11	5.14	5.24	5.12	5.09	5.10	5.11	5.13	5.14	5.14
165	5.26	5.25	5.23	5.23	5.22	5.25	5.26	5.30	5.31	5.34	5.39	5.54	5.36	5.29	5.31	5.31	5.33	5.33	5.33
170	5.46	5.46	5.42	5.42	5.42	5.44	5.45	5.48	5.50	5.54	5.62	5.82	5.54	5.47	5.48	5.48	5.50	5.49	5.50
175	5.64	5.62	5.58	5.58	5.57	5.59	5.59	5.62	5.64	5.70	5.82	6.10	5.68	5.62	5.62	5.61	5.62	5.61	5.62
180	5.74	5.72	5.69	5.69	5.68	5.68	5.69	5.70	5.73	5.77	5.91	6.28	5.74	5.71	5.69	5.68	5.68	5.68	5.69

C Range: 0 - 360DEG
 C Interval: 15.0DEG
 Test Speed: HIGH
 Temperature: 25.3°C
 Operators: DAMIN
 Test Date: 2023-11-15

γ Range: 0 - 180DEG
 γ Interval: 1.0DEG
 Test System: EVERFINE GO-2000B_V1 SYSTEM V2.00.471
 Humidity: 65.0%
 Test Distance: 4.880m [K=1.0000]
 Remarks:

LUMINOUS DISTRIBUTION INTENSITY DATA

Table--2

UNIT: cd

C (DEG) \ γ (DEG)	285	300	315	330	345														
0	477	478	480	483	486														
5	475	477	479	482	487														
10	470	472	475	479	483														
15	461	464	467	472	475														
20	450	453	456	461	464														
25	435	439	442	446	449														
30	416	421	424	428	431														
35	395	400	403	407	407														
40	370	375	378	382	379														
45	342	347	349	352	348														
50	311	316	317	318	313														
55	276	281	280	281	277														
60	238	241	241	241	239														
65	195	199	197	199	197														
70	152	154	153	155	151														
75	106	108	109	111	91.2														
80	62.5	64.6	66.4	65.9	38.9														
85	25.5	27.9	27.9	24.0	22.5														
90	3.25	3.50	5.61	5.59	5.53														
95	1.76	2.15	2.59	2.51	2.60														
100	1.83	1.84	1.91	2.10	2.46														
105	2.11	2.08	2.09	2.14	2.39														
110	2.42	2.39	2.39	2.43	2.67														
115	2.74	2.70	2.69	2.73	2.99														
120	3.05	3.00	2.99	3.03	3.32														
125	3.35	3.30	3.29	3.33	3.66														
130	3.64	3.59	3.59	3.64	4.00														
135	3.93	3.88	3.88	3.93	4.35														
140	4.19	4.16	4.16	4.22	4.68														
145	4.45	4.42	4.43	4.50	4.99														
150	4.69	4.67	4.69	4.77	5.30														
155	4.91	4.90	4.92	5.02	5.58														
160	5.12	5.11	5.14	5.26	5.84														
165	5.32	5.32	5.35	5.47	6.05														
170	5.49	5.50	5.54	5.66	6.23														
175	5.62	5.64	5.68	5.81	6.38														
180	5.70	5.72	5.78	5.89	6.47														

C Range: 0 - 360DEG
 C Interval: 15.0DEG
 Test Speed: HIGH
 Temperature:25.3°C
 Operators:DAMIN
 Test Date:2023-11-15

γ Range: 0 - 180DEG
 γ Interval: 1.0DEG
 Test System:EVERFINE GO-2000B_V1 SYSTEM V2.00.471
 Humidity:65.0%
 Test Distance:4.880m [K=1.0000]
 Remarks: