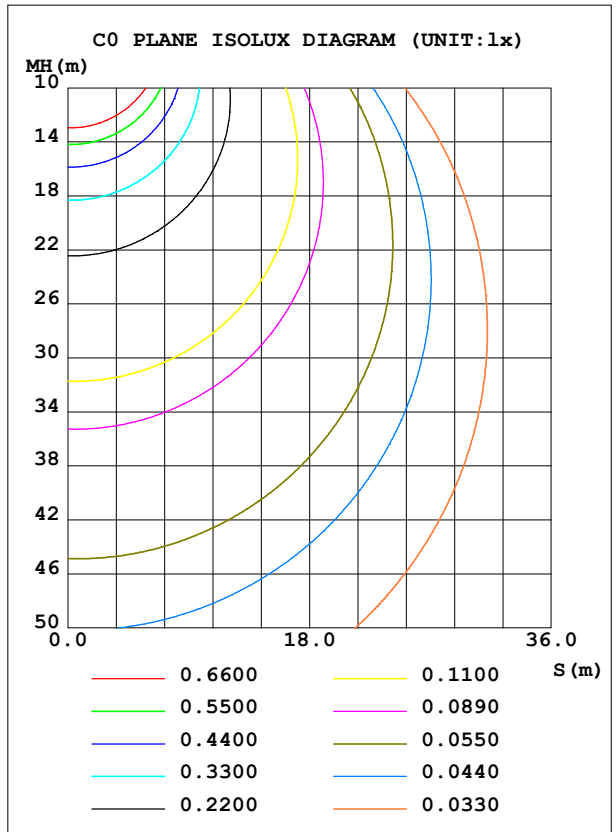
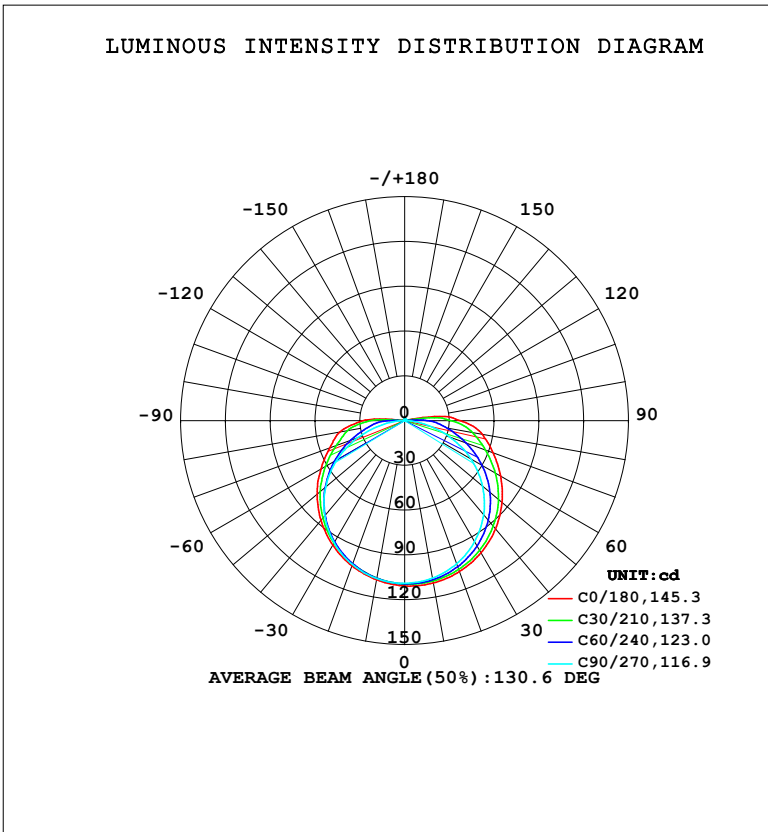


**LUMINAIRE PHOTOMETRIC TEST REPORT**

NAME: LED Strip	TYPE: Indoor lighting	WEIGHT: 20g
SPEC.: COB LED	DIM.: 500*8*1.9MM	SERIAL No.: 20240125014
MFR.: Hide-a-lite	SUR.: 500*8MM	Shielding Angle:

DATA OF LAMP		PHOTOMETRIC DATA			
MODEL: GO-24 (WCP) -UR-EP-LD (WW)		Imax (cd)	110.9	S/MH (C0/180)	1.30
NOMINAL POWER (W)	4.37555	LOR (%)	100.0	S/MH (C90/270)	1.29
RATED VOLTAGE (V)	DC 24V	TOTAL FLUX (lm)	390.66	η UP, DN (C0-180)	1.9, 48.7
NOMINAL FLUX (lm)	390.658	CIE CLASS	DIRECT	η UP, DN (C180-360)	1.5, 47.9
LAMPS INSIDE	1	η up (%)	3.3	CIBSE SHR NOM	1.50
TEST VOLTAGE (V)	DC 24V	η down (%)	96.7	CIBSE SHR MAX	1.50



C Range: 0 - 360DEG  
 C Interval: 15.0DEG  
 Test Speed: HIGH  
 Temperature: 25.3°C  
 Operators: DAMIN  
 Test Date: 2024-01-27

γ Range: 0 - 180DEG  
 γ Interval: 1.0DEG  
 Test System: EVERFINE GO-2000B\_V1 SYSTEM V2.00.471  
 Humidity: 65.0%  
 Test Distance: 4.880m [K=1.0000]  
 Remarks:

ZONAL FLUX DIAGRAM

ZONAL FLUX DIAGRAM:

$\gamma$	C0	C45	C90	C135	C180	C225	C270	C315	$\gamma$	$\Phi$ zone	$\Phi$ total	%lum,lamp
10	110.5	108.7	107.1	106.9	108.3	106.9	107.4	108.4	0- 10	10.37	10.37	2.66,2.66
20	107.6	105.1	102.0	101.5	103.5	101.7	102.6	104.3	10- 20	29.94	40.31	10.3,10.3
30	102.3	98.81	93.74	93.21	96.39	93.98	94.52	97.19	20- 30	46.12	86.44	22.1,22.1
40	94.73	89.84	82.37	82.16	87.25	83.73	83.33	87.21	30- 40	57.11	143.5	36.7,36.7
50	85.12	78.65	68.14	68.55	76.61	71.46	68.89	74.64	40- 50	61.67	205.2	52.5,52.5
60	74.29	65.29	51.28	53.11	64.76	57.87	52.22	59.67	50- 60	59.28	264.5	67.7,67.7
70	63.13	51.37	32.14	36.96	53.42	43.85	33.18	43.21	60- 70	50.65	315.1	80.7,80.7
80	52.70	38.56	13.10	22.53	44.16	32.27	13.97	27.60	70- 80	38.03	353.2	90.4,90.4
90	37.46	24.16	0.9839	9.861	27.92	17.77	1.073	14.47	80- 90	24.43	377.6	96.7,96.7
100	12.49	1.797	0.4446	0.6179	1.148	0.8060	0.4680	0.6195	90-100	8.294	385.9	98.8,98.8
110	0.8069	0.6577	0.5714	0.6112	0.8009	0.6704	0.5973	0.6145	100-110	0.9166	386.8	99,99
120	0.7716	0.7590	0.7157	0.7486	0.8859	0.7973	0.7370	0.7401	110-120	0.6955	387.5	99.2,99.2
130	0.8868	0.8871	0.8484	0.8883	0.9837	0.9218	0.8685	0.8578	120-130	0.7408	388.2	99.4,99.4
140	0.9882	0.9977	0.9764	1.009	1.070	1.028	0.9919	0.9777	130-140	0.7316	389.0	99.6,99.6
150	1.089	1.102	1.094	1.123	1.156	1.128	1.108	1.092	140-150	0.6626	389.6	99.7,99.7
160	1.192	1.203	1.201	1.225	1.243	1.220	1.215	1.198	150-160	0.5366	390.2	99.9,99.9
170	1.285	1.291	1.293	1.311	1.320	1.297	1.305	1.289	160-170	0.3548	390.5	100,100
180	1.351	1.350	1.350	1.353	1.351	1.347	1.354	1.350	170-180	0.1261	390.7	100,100
DEG	LUMINOUS INTENSITY:cd									UNIT:lm		

Conical surface Flux(90deg): 174.24 lm

%lum = 44.6%

%lamp = 44.6%

Conical surface Flux(120deg): 264.49 lm

%lum = 67.7%

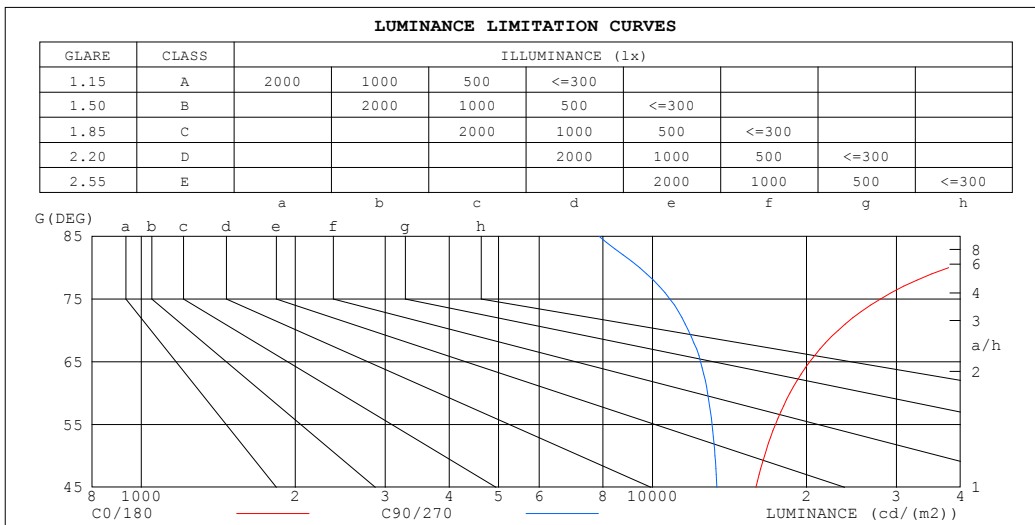
%lamp = 67.7%

C Range: 0 - 360DEG  
 C Interval: 15.0DEG  
 Test Speed: HIGH  
 Temperature:25.3°C  
 Operators:DAMIN  
 Test Date:2024-01-27

$\gamma$  Range: 0 - 180DEG  
 $\gamma$  Interval: 1.0DEG  
 Test System:EVERFINE GO-2000B\_V1 SYSTEM V2.00.471  
 Humidity:65.0%  
 Test Distance:4.880m [K=1.0000]  
 Remarks:

**LUMINANCE LIMITATION CURVES**

<b>NAME:</b> LED Strip	<b>TYPE:</b> Indoor lighting	<b>WEIGHT:</b> 20g
<b>SPEC.:</b> COB LED	<b>DIM.:</b> 500*8*1.9MM	<b>SERIAL No.:</b> 20240125014
<b>MFR.:</b> Hide-a-lite	<b>SUR.:</b> 500*8MM	<b>Shielding Angle:</b>



LUMINANCE cd/ (m2)		
G (DEG)	C0/180	C90/270
85	66370	7854
80	37939	9432
75	27918	10809
70	23073	11747
65	20310	12418
60	18571	12821
55	17392	13071
50	16553	13250
45	15937	13363

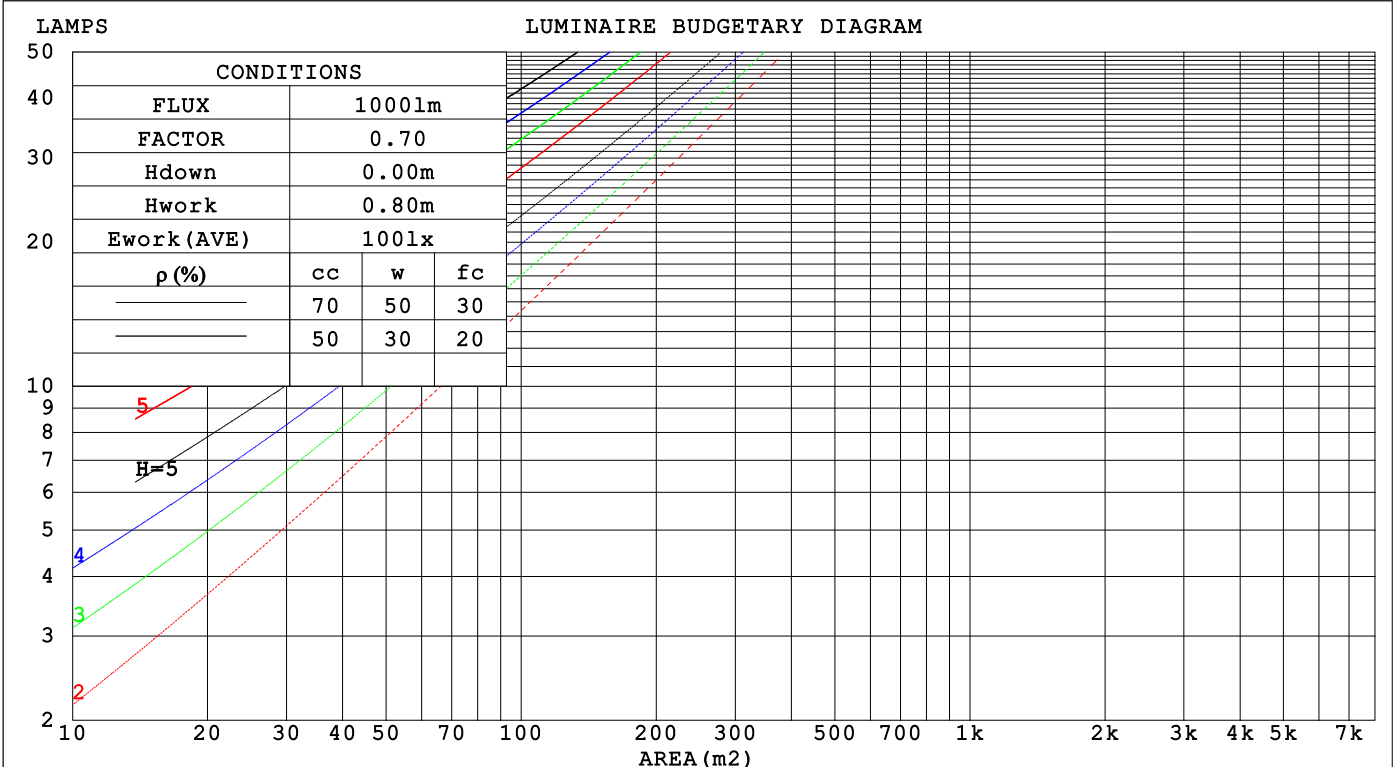
C Range: 0 - 360DEG  
 C Interval: 15.0DEG  
 Test Speed: HIGH  
 Temperature: 25.3°C  
 Operators: DAMIN  
 Test Date: 2024-01-27

γ Range: 0 - 180DEG  
 γ Interval: 1.0DEG  
 Test System: EVERFINE GO-2000B\_V1 SYSTEM V2.00.471  
 Humidity: 65.0%  
 Test Distance: 4.880m [K=1.0000]  
 Remarks:

**CU AND LUMINAIRE BUDGETARY ESTIMATE DIAGRAM**

NAME: LED Strip	TYPE: Indoor lighting	WEIGHT: 20g
SPEC.: COB LED	DIM.: 500*8*1.9MM	SERIAL No.: 20240125014
MFR.: Hide-a-lite	SUR.: 500*8MM	Shielding Angle:

pcc	80%			70%			50%			30%			10%			0
pw	50%	30%	10%	50%	30%	10%	50%	30%	10%	50%	30%	10%	50%	30%	10%	0
pfc	20%			20%			20%			20%			20%			0
RCR	RCR:Room Cavity Ratio															
	Coefficients of Utilization(CU)															
0.0	1.18	1.18	1.18	1.15	1.15	1.15	1.09	1.09	1.09	1.04	1.04	1.04	.99	.99	.99	.97
1.0	.00	.95	.90	.97	.92	.88	.92	.88	.85	.88	.84	.81	.83	.81	.78	.76
2.0	.86	.78	.71	.83	.76	.70	.79	.73	.68	.75	.70	.66	.72	.68	.64	.61
3.0	.74	.65	.58	.73	.64	.58	.69	.62	.56	.66	.60	.55	.63	.58	.53	.51
4.0	.66	.56	.49	.64	.55	.48	.61	.53	.47	.58	.52	.46	.56	.50	.45	.43
5.0	.58	.49	.42	.57	.48	.41	.54	.46	.40	.52	.45	.40	.50	.44	.39	.37
6.0	.52	.43	.36	.51	.42	.36	.49	.41	.35	.47	.40	.35	.45	.39	.34	.32
7.0	.47	.38	.32	.46	.38	.31	.44	.37	.31	.43	.36	.30	.41	.35	.30	.28
8.0	.43	.34	.28	.42	.34	.28	.41	.33	.27	.39	.32	.27	.38	.31	.27	.25
9.0	.39	.31	.25	.39	.31	.25	.37	.30	.25	.36	.29	.24	.35	.28	.24	.22
10.0	.36	.28	.23	.36	.28	.23	.34	.27	.22	.33	.27	.22	.32	.26	.22	.20



C Range: 0 - 360DEG  
 C Interval: 15.0DEG  
 Test Speed: HIGH  
 Temperature: 25.3°C  
 Operators: DAMIN  
 Test Date: 2024-01-27

γ Range: 0 - 180DEG  
 γ Interval: 1.0DEG  
 Test System: EVERFINE GO-2000B\_V1 SYSTEM V2.00.471  
 Humidity: 65.0%  
 Test Distance: 4.880m [K=1.0000]  
 Remarks:

WEC AND CCEC

NAME: LED Strip	TYPE: Indoor lighting	WEIGHT: 20g
SPEC.: COB LED	DIM.: 500*8*1.9MM	SERIAL No.: 20240125014
MFR.: Hide-a-lite	SUR.: 500*8MM	Shielding Angle:

$\rho_{CC}$	80%			70%			50%			30%			10%			0
$\rho_w$	50%	30%	10%	50%	30%	10%	50%	30%	10%	50%	30%	10%	50%	30%	10%	0
$\rho_{fc}$	20%			20%			20%			20%			20%			0
RCR	RCR:Room Cavity Ratio						Wall Exitance Coefficients(WEC)									
0.0																
1.0	.373	.212	.067	.365	.208	.066	.349	.200	.064	.335	.193	.062	.322	.187	.060	
2.0	.330	.181	.055	.322	.178	.055	.309	.172	.053	.296	.166	.052	.284	.161	.051	
3.0	.296	.158	.047	.289	.155	.047	.277	.150	.046	.266	.146	.045	.255	.141	.044	
4.0	.268	.139	.041	.262	.137	.041	.251	.133	.040	.241	.129	.039	.231	.126	.038	
5.0	.244	.125	.036	.239	.123	.036	.229	.119	.035	.220	.116	.035	.212	.113	.034	
6.0	.225	.113	.032	.220	.111	.032	.211	.108	.031	.203	.105	.031	.195	.103	.031	
7.0	.207	.103	.029	.203	.101	.029	.195	.099	.028	.188	.096	.028	.181	.094	.028	
8.0	.193	.094	.026	.189	.093	.026	.182	.091	.026	.175	.089	.026	.169	.087	.025	
9.0	.180	.087	.024	.176	.086	.024	.170	.084	.024	.164	.082	.024	.158	.080	.023	
10.0	.168	.081	.022	.165	.080	.022	.159	.078	.022	.154	.076	.022	.149	.075	.021	

$\rho_{CC}$	80%			70%			50%			30%			10%			0
$\rho_w$	50%	30%	10%	50%	30%	10%	50%	30%	10%	50%	30%	10%	50%	30%	10%	0
$\rho_{fc}$	20%			20%			20%			20%			20%			0
RCR	RCR:Room Cavity Ratio						Ceiling Cavity Exitance Coefficients(CCEC)									
0.0	.216	.216	.216	.185	.185	.185	.126	.126	.126	.072	.072	.072	.023	.023	.023	
1.0	.210	.181	.155	.180	.156	.133	.123	.107	.092	.071	.062	.054	.023	.020	.017	
2.0	.203	.158	.119	.174	.136	.103	.119	.094	.072	.069	.055	.042	.022	.018	.014	
3.0	.195	.140	.097	.168	.121	.084	.115	.084	.059	.066	.049	.035	.021	.016	.011	
4.0	.188	.128	.082	.161	.110	.071	.111	.077	.050	.064	.045	.030	.021	.015	.010	
5.0	.180	.117	.071	.154	.102	.062	.106	.071	.044	.062	.042	.026	.020	.014	.009	
6.0	.172	.109	.064	.148	.095	.056	.102	.066	.039	.059	.039	.023	.019	.013	.008	
7.0	.165	.102	.058	.142	.089	.051	.098	.062	.036	.057	.037	.021	.018	.012	.007	
8.0	.158	.097	.054	.136	.084	.047	.094	.059	.034	.055	.035	.020	.018	.011	.007	
9.0	.152	.092	.051	.131	.080	.044	.091	.056	.032	.053	.033	.019	.017	.011	.006	
10.0	.146	.087	.048	.126	.076	.042	.087	.053	.030	.051	.032	.018	.016	.010	.006	

C Range: 0 - 360DEG  
 C Interval: 15.0DEG  
 Test Speed: HIGH  
 Temperature:25.3°C  
 Operators:DAMIN  
 Test Date:2024-01-27

$\gamma$  Range: 0 - 180DEG  
 $\gamma$  Interval: 1.0DEG  
 Test System:EVERFINE GO-2000B\_V1 SYSTEM V2.00.471  
 Humidity:65.0%  
 Test Distance:4.880m [K=1.0000]  
 Remarks:

**UGR(Unified Glare Rating) Table**

NAME: LED Strip		TYPE: Indoor lighting					WEIGHT: 20g				
SPEC.: COB LED		DIM.: 500*8*1.9MM					SERIAL No.: 20240125014				
MFR.: Hide-a-lite		SUR.: 500*8MM					Shielding Angle:				
ceiling/cavity	0.7	0.7	0.5	0.5	0.3	0.7	0.7	0.5	0.5	0.3	
walls	0.5	0.3	0.5	0.3	0.3	0.5	0.3	0.5	0.3	0.3	
working plane	0.2	0.2	0.2	0.2	0.2	0.2	0.2	0.2	0.2	0.2	
Room dimensions	Viewed crosswise					Viewed endwise					
x = 2H y = 2H	26.4	28.0	26.8	28.3	28.6	24.9	26.5	25.3	26.8	27.1	
3H	29.0	30.4	29.3	30.7	31.1	26.5	28.0	26.9	28.3	28.6	
4H	30.4	31.8	30.8	32.1	32.4	27.2	28.6	27.5	28.9	29.2	
6H	32.0	33.3	32.3	33.6	34.0	27.6	28.9	28.0	29.3	29.6	
8H	32.8	34.1	33.2	34.4	34.8	27.8	29.0	28.2	29.4	29.7	
12H	33.8	35.0	34.2	35.4	35.8	27.8	29.1	28.2	29.4	29.8	
4H 2H	27.1	28.5	27.5	28.8	29.1	26.0	27.4	26.4	27.7	28.0	
3H	29.9	31.1	30.3	31.5	31.9	27.8	29.1	28.2	29.4	29.8	
4H	31.5	32.6	31.9	33.0	33.4	28.7	29.8	29.1	30.2	30.6	
6H	33.3	34.3	33.7	34.7	35.1	29.3	30.3	29.7	30.7	31.2	
8H	34.3	35.2	34.7	35.6	36.1	29.5	30.4	30.0	30.9	31.3	
12H	35.4	36.2	35.8	36.7	37.2	29.6	30.5	30.1	31.0	31.5	
8H 4H	31.9	32.8	32.3	33.2	33.7	29.6	30.5	30.0	31.0	31.4	
6H	34.0	34.8	34.5	35.2	35.7	30.6	31.4	31.1	31.8	32.3	
8H	35.2	35.9	35.7	36.4	36.9	31.0	31.7	31.5	32.2	32.7	
12H	36.5	37.2	37.1	37.7	38.2	31.3	31.9	31.8	32.4	33.0	
12H 4H	31.9	32.8	32.4	33.2	33.7	29.9	30.8	30.4	31.2	31.7	
6H	34.1	34.8	34.6	35.3	35.8	31.1	31.8	31.6	32.3	32.8	
8H	35.4	36.0	35.9	36.5	37.1	31.7	32.3	32.2	32.8	33.3	
Variations with the observer position at spacings(CIE Pub.117):											
S = 1.0H	+ 0.1 / - 0.1					+ 0.1 / - 0.1					
1.5H	+ 0.2 / - 0.3					+ 0.2 / - 0.3					
2.0H	+ 0.2 / - 0.4					+ 0.2 / - 0.4					

CIE Pub.117, 390.7 lm Total Lamp Luminous Flux Correct (8log(F/F0) = -3.3)  
 Area: 0.008 m2

C Range: 0 - 360DEG  
 C Interval: 15.0DEG  
 Test Speed: HIGH  
 Temperature:25.3°C  
 Operators:DAMIN  
 Test Date:2024-01-27

γ Range: 0 - 180DEG  
 γ Interval: 1.0DEG  
 Test System:EVERFINE GO-2000B\_V1 SYSTEM V2.00.471  
 Humidity:65.0%  
 Test Distance:4.880m [K=1.0000]  
 Remarks:

**UTILIZATION FACTORS TABLE**

NAME: LED Strip	TYPE: Indoor lighting	WEIGHT: 20g
SPEC.: COB LED	DIM.: 500*8*1.9MM	SERIAL No.: 20240125014
MFR.: Hide-a-lite	SUR.: 500*8MM	Shielding Angle:

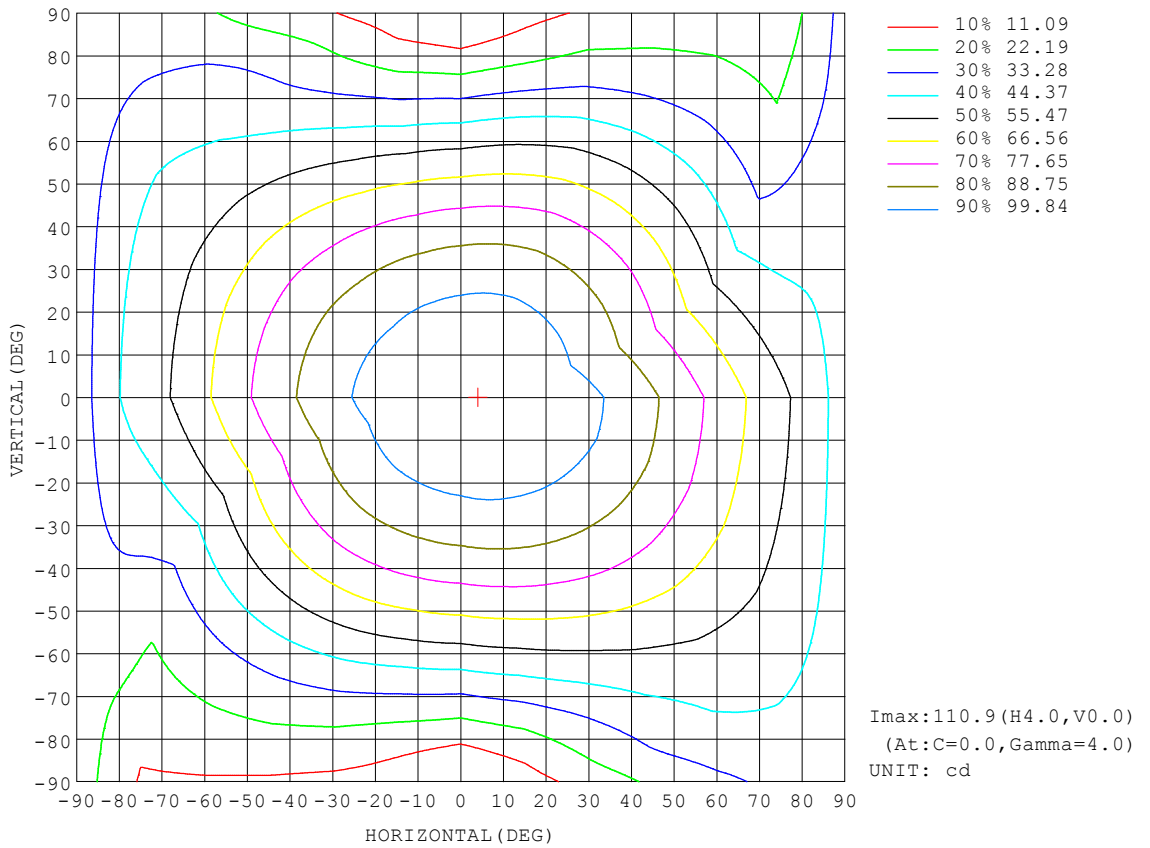
REFLECTANCE										
Ceiling	0.8	0.8	0.8	0.7	0.7	0.7	0.5	0.5	0.5	0
Walls	0.7	0.5	0.3	0.7	0.5	0.3	0.7	0.5	0.3	0
Working plane	0.2	0.2	0.2	0.2	0.2	0.2	0.2	0.2	0.2	0
ROOM INDEX	UTILIZATION FACTORS (PERCENT) $k(RI) \times RCR = 5$									
k = 0.60	53	41	34	52	41	33	51	40	33	26
0.80	63	50	42	61	50	42	59	49	42	34
1.00	71	58	50	69	58	50	67	59	50	42
1.25	78	66	58	76	65	57	73	63	57	48
1.50	83	72	64	81	70	63	77	68	62	53
2.00	90	80	72	88	79	71	84	76	70	61
2.50	94	85	78	92	83	77	87	80	75	65
3.00	98	89	83	95	88	82	91	84	79	69
4.00	102	95	89	100	93	88	95	89	85	75
5.00	105	99	94	102	97	92	97	93	89	78
ROOM INDEX	UF(total)									Direct
According to DIN EN 13032-2 2004			Suspended				SHRNOM = 1.25			

C Range: 0 - 360DEG  
 C Interval: 15.0DEG  
 Test Speed: HIGH  
 Temperature: 25.3°C  
 Operators: DAMIN  
 Test Date: 2024-01-27

$\gamma$  Range: 0 - 180DEG  
 $\gamma$  Interval: 1.0DEG  
 Test System: EVERFINE GO-2000B\_V1 SYSTEM V2.00.471  
 Humidity: 65.0%  
 Test Distance: 4.880m [K=1.0000]  
 Remarks:

**ISOCANDELA DIAGRAM**

NAME: LED Strip	TYPE: Indoor lighting	WEIGHT: 20g
SPEC.: COB LED	DIM.: 500*8*1.9MM	SERIAL No.: 20240125014
MFR.: Hide-a-lite	SUR.: 500*8MM	Shielding Angle:



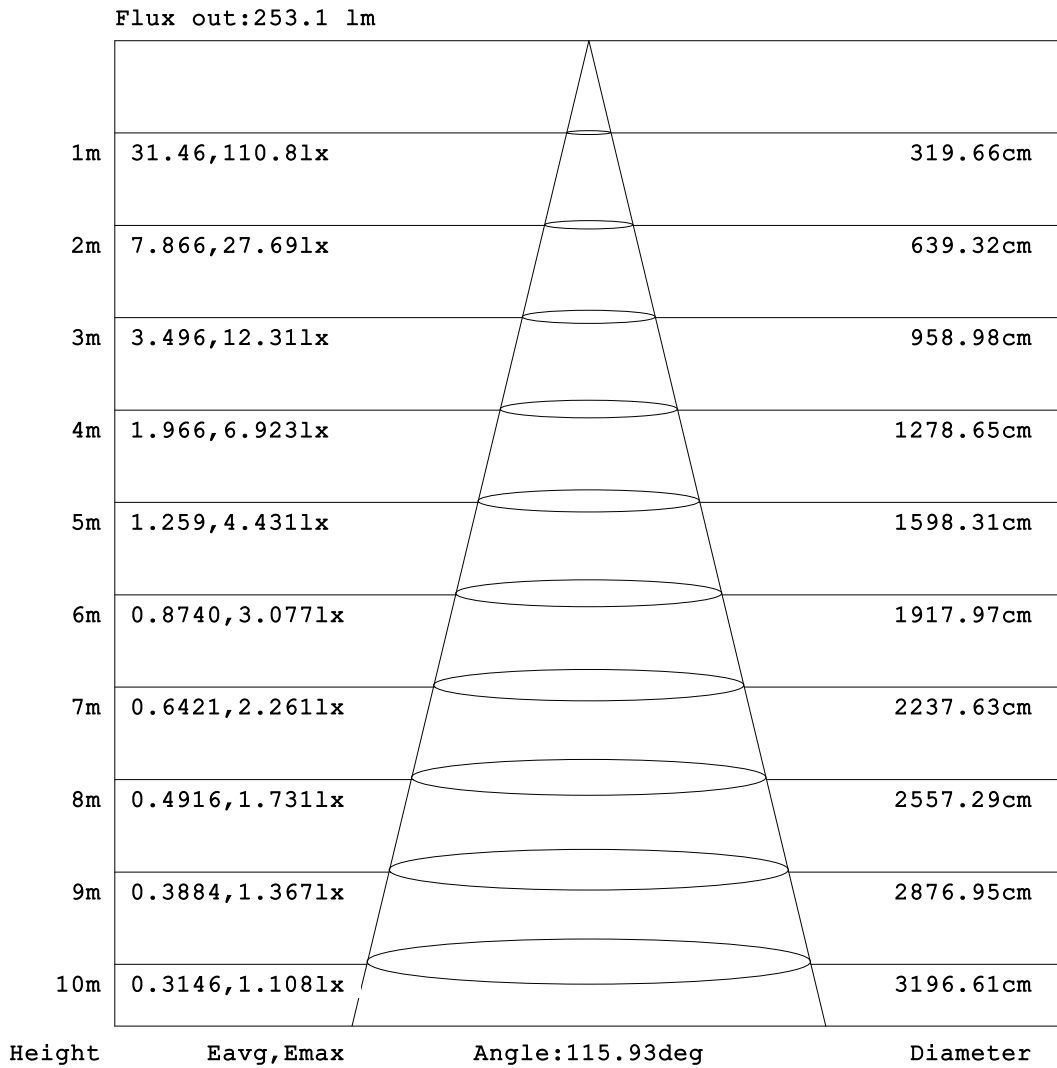
C Range: 0 - 360DEG  
 C Interval: 15.0DEG  
 Test Speed: HIGH  
 Temperature: 25.3°C  
 Operators: DAMIN  
 Test Date: 2024-01-27

γ Range: 0 - 180DEG  
 γ Interval: 1.0DEG  
 Test System: EVERFINE GO-2000B\_V1 SYSTEM V2.00.471  
 Humidity: 65.0%  
 Test Distance: 4.880m [K=1.0000]  
 Remarks:



**AAI Figure**

NAME: LED Strip	TYPE: Indoor lighting	WEIGHT: 20g
SPEC.: COB LED	DIM.: 500*8*1.9MM	SERIAL No.: 20240125014
MFR.: Hide-a-lite	SUR.: 500*8MM	Shielding Angle:



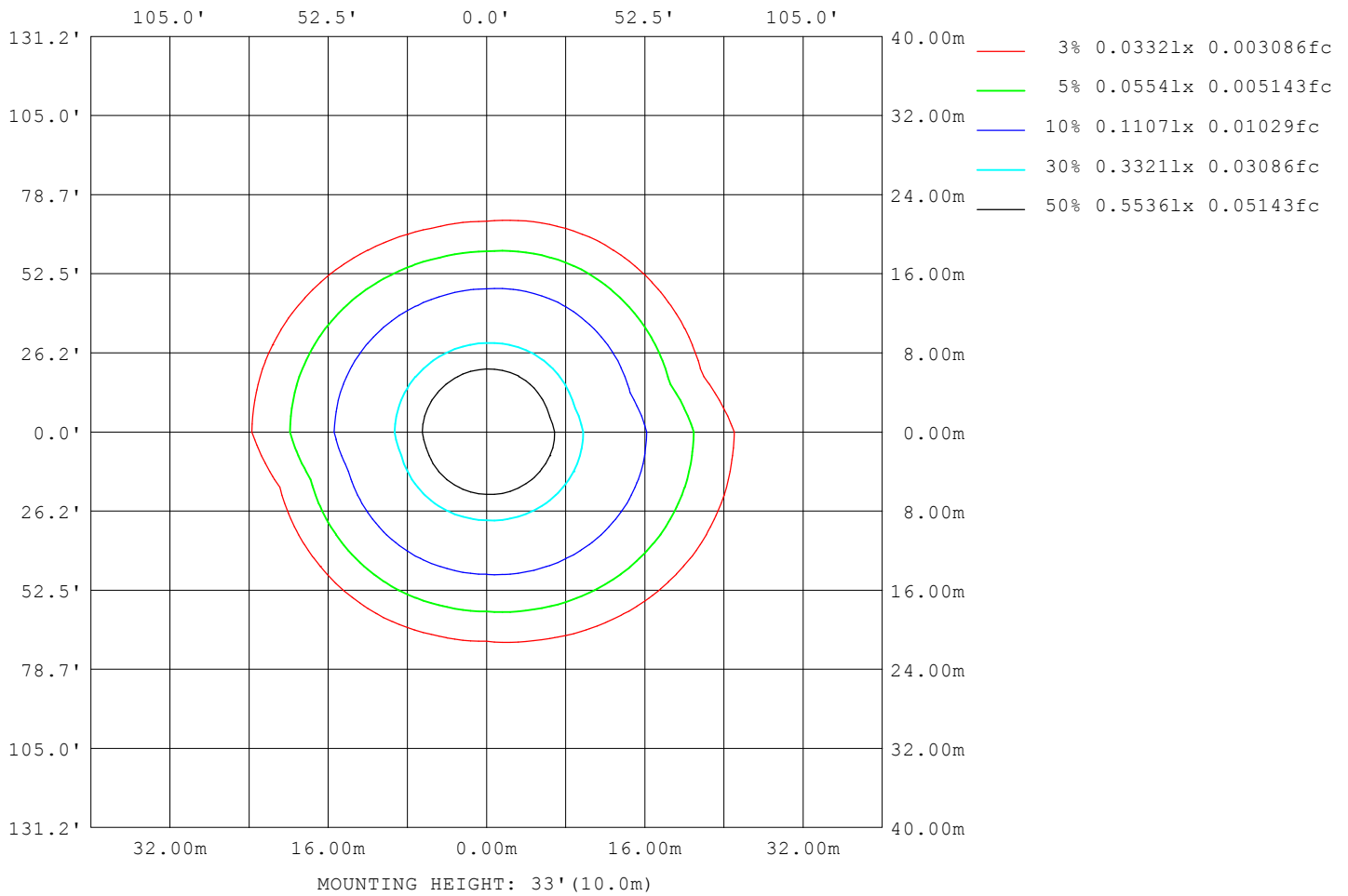
Note: The Curves indicate the illuminated area and the average illumination when the luminaire is at different distance.

C Range: 0 - 360DEG  
 C Interval: 15.0DEG  
 Test Speed: HIGH  
 Temperature: 25.3°C  
 Operators: DAMIN  
 Test Date: 2024-01-27

γ Range: 0 - 180DEG  
 γ Interval: 1.0DEG  
 Test System: EVERFINE GO-2000B\_V1 SYSTEM V2.00.471  
 Humidity: 65.0%  
 Test Distance: 4.880m [K=1.0000]  
 Remarks:

**ISOLUX DIAGRAM**

NAME: LED Strip	TYPE: Indoor lighting	WEIGHT: 20g
SPEC.: COB LED	DIM.: 500*8*1.9MM	SERIAL No.: 20240125014
MFR.: Hide-a-lite	SUR.: 500*8MM	Shielding Angle:



C Range: 0 - 360DEG  
 C Interval: 15.0DEG  
 Test Speed: HIGH  
 Temperature: 25.3°C  
 Operators: DAMIN  
 Test Date: 2024-01-27

γ Range: 0 - 180DEG  
 γ Interval: 1.0DEG  
 Test System: EVERFINE GO-2000B\_V1 SYSTEM V2.00.471  
 Humidity: 65.0%  
 Test Distance: 4.880m [K=1.0000]  
 Remarks:

LED Avg.L Report

NAME: LED Strip	TYPE: Indoor lighting	WEIGHT: 20g
SPEC.: COB LED	DIM.: 500*8*1.9MM	SERIAL No.: 20240125014
MFR.: Hide-a-lite	SUR.: 500*8MM	Shielding Angle:

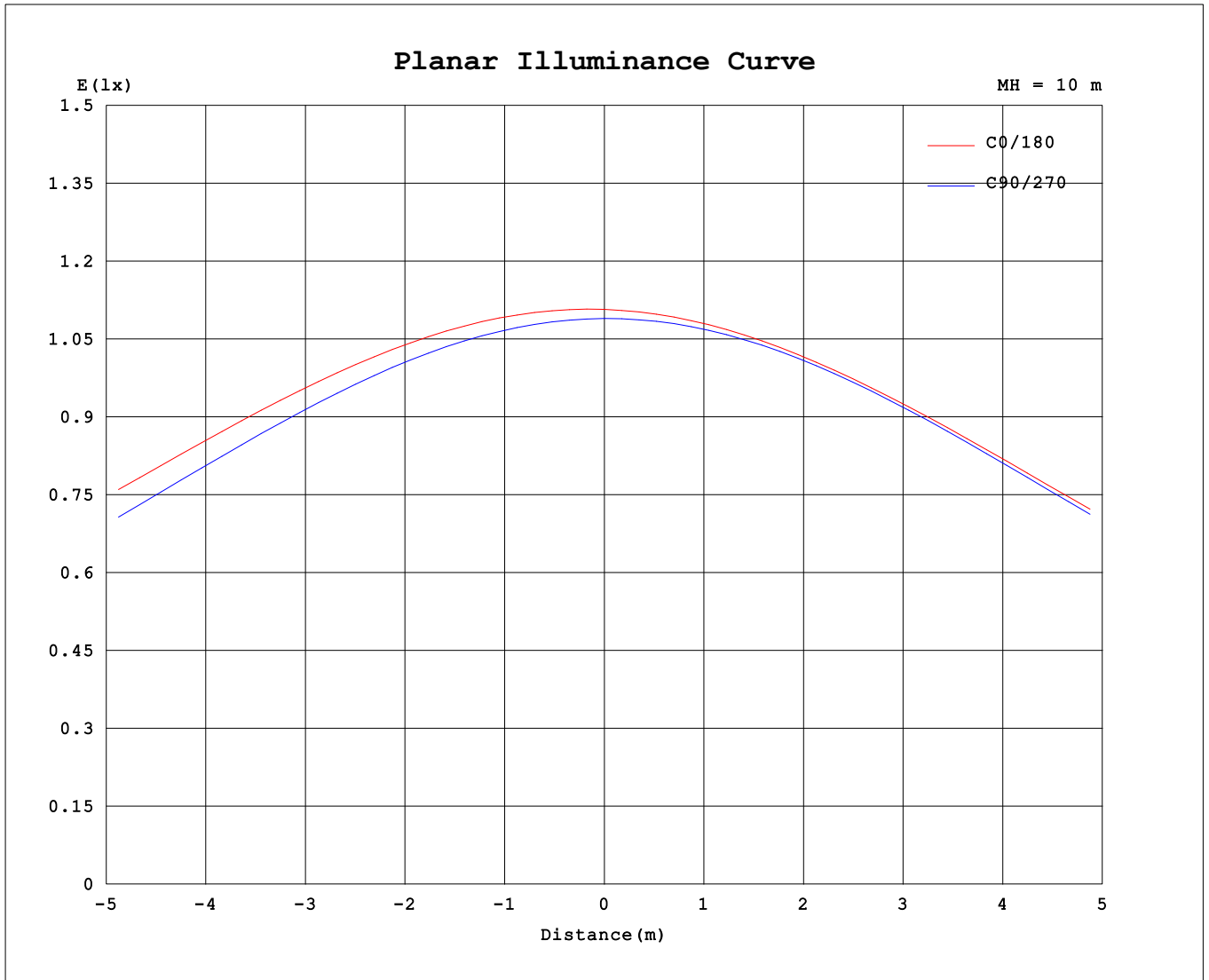
AvgL	cd/m2
L_0~180 (65) av	18866
L_0~180 (75) av	25761
L_0~180 (85) av	58967
L_90~270 (65) av	12555
L_90~270 (75) av	11044
L_90~270 (85) av	8230
L_45 (65) av	15209
L_45 (75) av	17683
L_45 (85) av	34621

Standard: GB/T 29293-2012

C Range: 0 - 360DEG  
 C Interval: 15.0DEG  
 Test Speed: HIGH  
 Temperature:25.3°C  
 Operators:DAMIN  
 Test Date:2024-01-27

γ Range: 0 - 180DEG  
 γ Interval: 1.0DEG  
 Test System:EVERFINE GO-2000B\_V1 SYSTEM V2.00.471  
 Humidity:65.0%  
 Test Distance:4.880m [K=1.0000]  
 Remarks:

**Planar Illuminance Curve**



C Range: 0 - 360DEG  
 C Interval: 15.0DEG  
 Test Speed: HIGH  
 Temperature: 25.3°C  
 Operators: DAMIN  
 Test Date: 2024-01-27

γ Range: 0 - 180DEG  
 γ Interval: 1.0DEG  
 Test System: EVERFINE GO-2000B\_V1 SYSTEM V2.00.471  
 Humidity: 65.0%  
 Test Distance: 4.880m [K=1.0000]  
 Remarks:

LUMINOUS DISTRIBUTION INTENSITY DATA

NAME: LED Strip	TYPE: Indoor lighting	WEIGHT: 20g
SPEC.: COB LED	DIM.: 500*8*1.9MM	SERIAL No.: 20240125014
MFR.: Hide-a-lite	SUR.: 500*8MM	Shielding Angle:

Table--1

UNIT: cd

C (DEG) \ γ (DEG)	0	15	30	45	60	75	90	105	120	135	150	165	180	195	210	225	240	255	270
0	111	110	110	109	109	109	109	109	109	109	109	109	111	110	110	109	109	109	109
5	111	111	110	109	109	109	108	108	108	108	109	109	110	109	109	108	109	109	109
10	110	110	109	109	108	108	107	107	107	107	107	107	108	108	107	107	107	107	107
15	109	109	108	107	107	106	105	105	105	105	105	105	106	106	105	105	105	105	105
20	108	107	106	105	104	103	102	102	101	102	101	102	103	103	102	102	102	102	103
25	105	105	104	102	101	99.6	98.3	97.7	97.6	97.7	97.6	97.8	100	99.5	98.8	98.2	98.2	98.4	99.0
30	102	102	100	98.8	97.0	95.3	93.7	93.1	93.0	93.2	93.2	93.3	96.4	95.6	94.8	94.0	93.8	93.9	94.5
35	98.8	98.5	96.7	94.7	92.4	90.3	88.4	87.8	87.7	88.0	87.9	88.1	92.0	91.2	90.3	89.1	88.7	88.6	89.3
40	94.7	94.4	92.3	89.8	87.1	84.5	82.4	81.8	81.8	82.2	82.1	82.3	87.3	86.3	85.2	83.7	82.9	82.6	83.3
45	90.2	89.8	87.5	84.5	81.2	78.1	75.6	75.1	75.3	75.7	75.7	75.9	82.1	81.1	79.8	77.8	76.6	75.9	76.6
50	85.1	84.6	82.1	78.6	74.6	71.1	68.1	67.6	68.2	68.6	68.7	68.7	76.6	75.6	73.9	71.5	69.5	68.5	68.9
55	79.8	79.1	76.2	72.3	67.4	63.1	60.0	59.6	60.5	61.0	61.2	61.2	70.9	69.8	67.6	64.8	62.0	60.5	60.9
60	74.3	73.4	70.1	65.3	59.8	54.8	51.3	51.2	52.5	53.1	53.4	53.3	64.8	63.8	61.3	57.9	54.3	52.0	52.2
65	68.7	67.4	63.8	58.3	51.9	45.9	42.0	42.4	44.1	45.0	45.4	45.2	58.9	57.9	54.9	50.8	46.5	43.1	42.9
70	63.1	61.7	57.7	51.4	43.8	36.7	32.1	33.4	35.7	37.0	37.3	37.2	53.4	52.3	48.8	43.8	38.6	33.9	33.2
75	57.8	56.2	51.8	44.8	35.9	27.6	22.4	24.7	27.7	29.2	29.6	29.5	48.9	47.6	43.5	37.5	31.0	25.0	23.4
80	52.7	51.0	46.1	38.6	28.9	19.0	13.1	16.8	20.7	22.5	23.1	22.8	44.2	42.9	38.9	32.3	24.3	16.9	14.0
85	46.3	44.7	39.9	32.5	22.6	12.0	5.48	10.5	15.1	17.0	17.5	17.2	36.0	34.6	31.4	25.8	18.9	10.2	6.00
90	37.5	35.9	31.0	24.2	15.2	6.49	0.98	5.07	8.31	9.86	10.2	10.0	27.9	26.6	23.3	17.8	11.5	5.12	1.07
95	29.8	28.3	23.1	15.6	5.40	0.54	0.44	0.57	0.73	0.79	0.81	0.80	12.8	11.2	8.41	3.72	1.16	0.57	0.44
100	12.5	11.1	5.98	1.80	0.66	0.52	0.44	0.54	0.60	0.62	0.64	0.62	1.15	1.10	1.00	0.81	0.64	0.52	0.47
105	1.49	1.31	0.84	0.71	0.62	0.54	0.50	0.53	0.56	0.57	0.58	0.57	0.83	0.82	0.75	0.69	0.61	0.53	0.52
110	0.81	0.78	0.73	0.66	0.60	0.59	0.57	0.59	0.59	0.61	0.60	0.61	0.80	0.78	0.73	0.67	0.63	0.60	0.60
115	0.75	0.73	0.71	0.69	0.67	0.66	0.64	0.66	0.66	0.68	0.67	0.68	0.83	0.81	0.78	0.73	0.70	0.67	0.67
120	0.77	0.78	0.76	0.76	0.73	0.73	0.72	0.73	0.73	0.75	0.74	0.75	0.89	0.87	0.85	0.80	0.77	0.74	0.74
125	0.83	0.84	0.83	0.82	0.79	0.79	0.78	0.80	0.81	0.82	0.81	0.82	0.93	0.92	0.90	0.87	0.84	0.81	0.81
130	0.89	0.90	0.89	0.89	0.86	0.86	0.85	0.87	0.87	0.89	0.88	0.89	0.98	0.97	0.96	0.92	0.90	0.87	0.87
135	0.94	0.96	0.95	0.95	0.92	0.92	0.91	0.93	0.94	0.95	0.94	0.95	1.03	1.02	1.01	0.98	0.96	0.93	0.93
140	0.99	1.01	1.00	1.00	0.98	0.98	0.98	1.00	1.00	1.01	1.00	1.01	1.07	1.05	1.05	1.03	1.02	1.00	0.99
145	1.04	1.06	1.05	1.05	1.03	1.04	1.03	1.05	1.05	1.07	1.06	1.07	1.11	1.10	1.10	1.08	1.07	1.05	1.05
150	1.09	1.11	1.10	1.10	1.09	1.10	1.09	1.11	1.11	1.12	1.12	1.12	1.16	1.14	1.14	1.13	1.13	1.11	1.11
155	1.14	1.16	1.15	1.15	1.14	1.15	1.15	1.17	1.16	1.18	1.17	1.18	1.20	1.18	1.19	1.17	1.18	1.16	1.16
160	1.19	1.21	1.20	1.20	1.19	1.21	1.20	1.22	1.22	1.22	1.22	1.22	1.24	1.22	1.23	1.22	1.22	1.22	1.22
165	1.24	1.25	1.24	1.25	1.24	1.25	1.25	1.27	1.26	1.27	1.26	1.27	1.29	1.26	1.27	1.26	1.27	1.26	1.26
170	1.28	1.29	1.28	1.29	1.29	1.30	1.29	1.31	1.30	1.31	1.30	1.31	1.32	1.29	1.31	1.30	1.31	1.30	1.30
175	1.33	1.33	1.32	1.33	1.32	1.34	1.33	1.34	1.33	1.34	1.33	1.34	1.35	1.32	1.34	1.33	1.34	1.33	1.34
180	1.35	1.35	1.34	1.35	1.35	1.35	1.35	1.35	1.35	1.35	1.35	1.35	1.35	1.35	1.35	1.35	1.35	1.35	1.35

C Range: 0 - 360DEG  
 C Interval: 15.0DEG  
 Test Speed: HIGH  
 Temperature: 25.3°C  
 Operators: DAMIN  
 Test Date: 2024-01-27

γ Range: 0 - 180DEG  
 γ Interval: 1.0DEG  
 Test System: EVERFINE GO-2000B\_V1 SYSTEM V2.00.471  
 Humidity: 65.0%  
 Test Distance: 4.880m [K=1.0000]  
 Remarks:

LUMINOUS DISTRIBUTION INTENSITY DATA

NAME: LED Strip	TYPE: Indoor lighting	WEIGHT: 20g
SPEC.: COB LED	DIM.: 500*8*1.9MM	SERIAL No.: 20240125014
MFR.: Hide-a-lite	SUR.: 500*8MM	Shielding Angle:

Table--2

UNIT: cd

C (DEG) \ γ (DEG)	285	300	315	330	345														
0	109	109	109	109	109														
5	109	109	109	109	109														
10	108	108	108	108	108														
15	106	107	107	107	107														
20	103	104	104	104	104														
25	100.0	101	101	101	101														
30	95.7	96.9	97.2	97.4	97.2														
35	90.8	92.1	92.5	92.8	92.5														
40	85.0	86.7	87.2	87.6	87.2														
45	78.6	80.7	81.2	81.7	81.3														
50	71.5	74.0	74.6	75.1	74.7														
55	63.8	66.5	67.4	67.7	67.4														
60	55.6	58.6	59.7	60.1	59.7														
65	46.8	50.3	51.6	52.0	51.6														
70	37.7	41.8	43.2	43.8	43.3														
75	28.5	33.3	35.0	35.8	35.0														
80	19.8	25.6	27.6	28.5	27.7														
85	12.9	19.1	21.2	22.1	21.3														
90	7.30	12.7	14.5	15.3	14.6														
95	0.63	3.93	5.63	6.73	5.83														
100	0.54	0.58	0.62	0.62	0.63														
105	0.55	0.59	0.61	0.61	0.61														
110	0.60	0.62	0.61	0.63	0.62														
115	0.66	0.68	0.68	0.69	0.68														
120	0.73	0.75	0.74	0.74	0.74														
125	0.79	0.81	0.81	0.82	0.81														
130	0.85	0.87	0.86	0.87	0.86														
135	0.92	0.93	0.92	0.93	0.92														
140	0.98	0.98	0.98	0.99	0.98														
145	1.03	1.04	1.03	1.04	1.03														
150	1.09	1.10	1.09	1.10	1.09														
155	1.15	1.16	1.15	1.16	1.15														
160	1.20	1.21	1.20	1.21	1.20														
165	1.25	1.26	1.24	1.25	1.25														
170	1.30	1.30	1.29	1.30	1.29														
175	1.33	1.34	1.32	1.34	1.33														
180	1.35	1.35	1.35	1.35	1.35														

C Range: 0 - 360DEG  
 C Interval: 15.0DEG  
 Test Speed: HIGH  
 Temperature:25.3°C  
 Operators:DAMIN  
 Test Date:2024-01-27

γ Range: 0 - 180DEG  
 γ Interval: 1.0DEG  
 Test System:EVERFINE GO-2000B\_V1 SYSTEM V2.00.471  
 Humidity:65.0%  
 Test Distance:4.880m [K=1.0000]  
 Remarks: