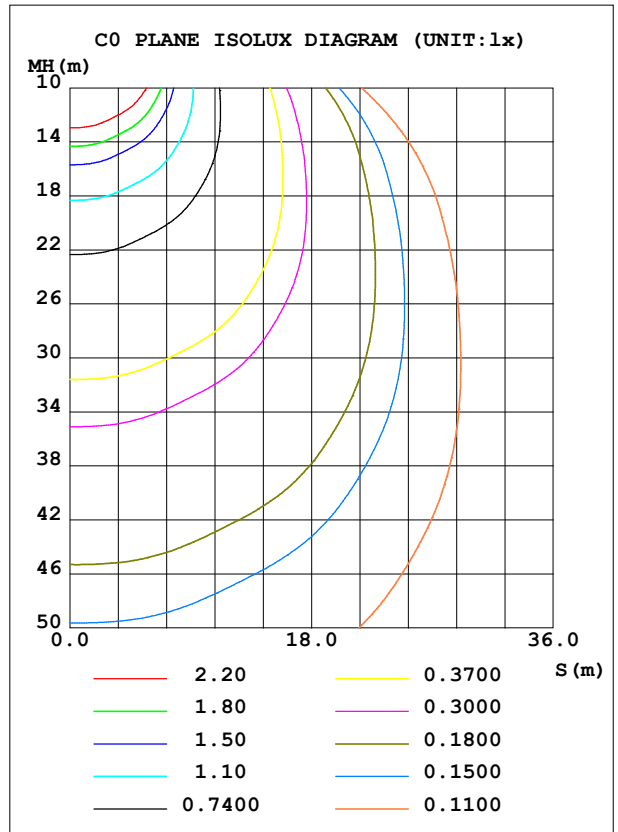
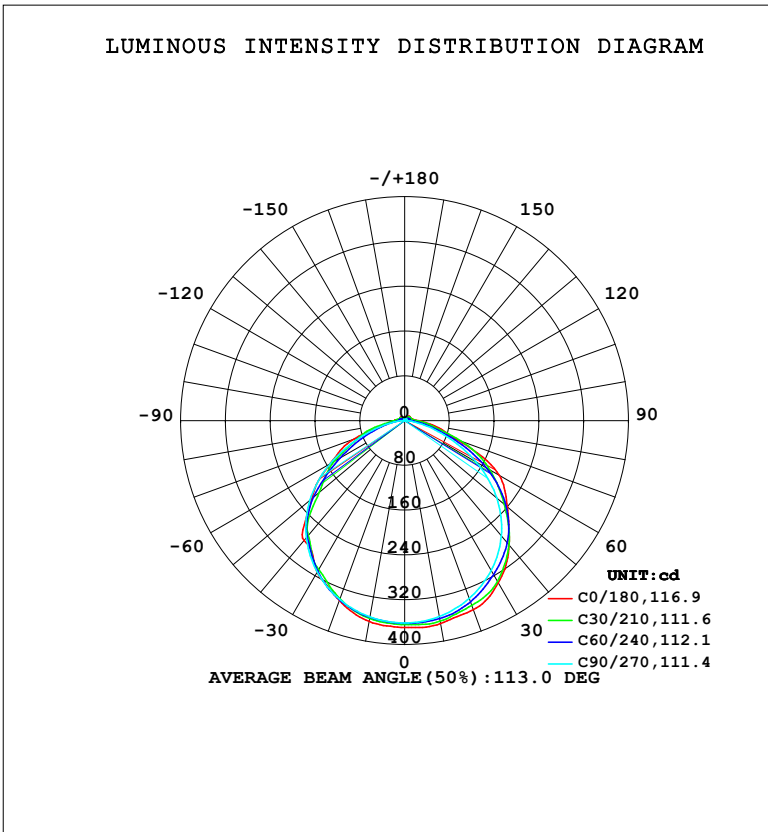


LUMINAIRE PHOTOMETRIC TEST REPORT

NAME: LED Strip	TYPE: Indoor lighting	WEIGHT: 75g
SPEC.: LED	DIM.: 1000*10*5MM	SERIAL No.: 20240709003
MFR.: EVERFINE	SUR.: 1000*10MM	Shielding Angle:

DATA OF LAMP		PHOTOMETRIC DATA			
HM0DET2WHC-XX-EU-HR-HQ1-WP-EP		Imax (cd)	370.7	S/MH (C0/180)	1.25
NOMINAL POWER (W)	11.4201	LOR (%)	100.0	S/MH (C90/270)	1.28
RATED VOLTAGE (V)	AC 230V	TOTAL FLUX (lm)	1061.0	η UP, DN (C0-180)	5.7, 46.6
NOMINAL FLUX (lm)	1061.03	CIE CLASS	DIRECT	η UP, DN (C180-360)	3.7, 43.9
LAMPS INSIDE	1	η up (%)	9.5	CIBSE SHR NOM	1.25
TEST VOLTAGE (V)	AC 230V	η down (%)	90.5	CIBSE SHR MAX	1.25



C Range: 0 - 360DEG
 C Interval: 15.0DEG
 Test Speed: HIGH
 Temperature: 25.3°C
 Operators: DAMIN
 Test Date: 2024-07-09

γ Range: 0 - 180DEG
 γ Interval: 1.0DEG
 Test System: EVERFINE GO-2000B_V1 SYSTEM V2.00.471
 Humidity: 65.0%
 Test Distance: 4.880m [K=1.0000]
 Remarks:

ZONAL FLUX DIAGRAM

ZONAL FLUX DIAGRAM:

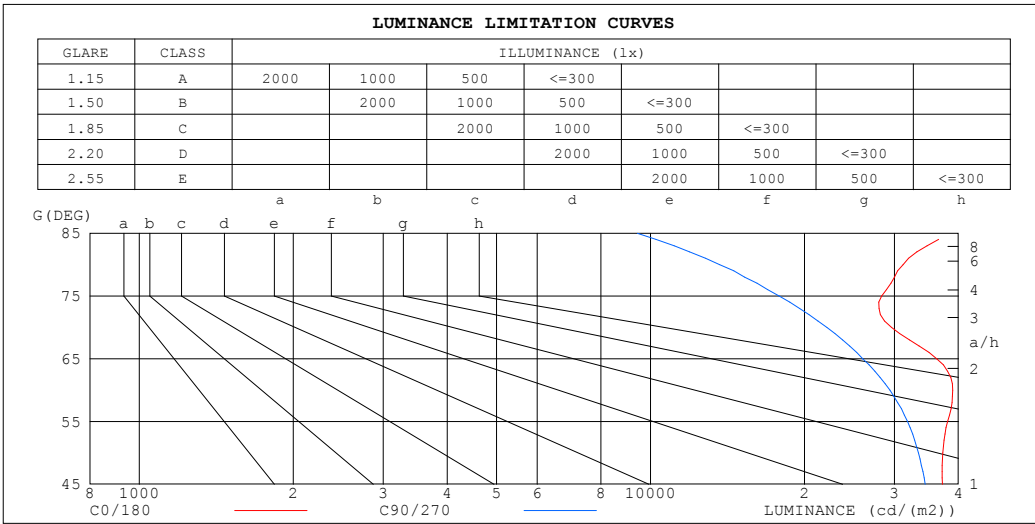
γ	C0	C45	C90	C135	C180	C225	C270	C315	γ	Φ zone	Φ total	%lum,lamp
10	368.3	361.7	355.4	261.2	364.4	357.4	356.2	256.2	0- 10	31.14	31.14	2.94,2.94
20	359.3	346.6	337.8	253.6	341.7	339.3	339.7	243.4	10- 20	89.94	121.1	11.4,11.4
30	334.7	327.5	308.9	238.3	313.0	305.7	312.5	226.5	20- 30	137.8	258.9	24.4,24.4
40	290.7	289.5	268.7	216.3	279.6	267.4	273.2	198.8	30- 40	168.5	427.3	40.3,40.3
50	239.8	234.5	214.8	181.9	217.0	198.5	220.8	156.4	40- 50	176.6	604.0	56.9,56.9
60	195.1	166.2	146.9	142.9	153.1	128.5	153.2	110.4	50- 60	155.4	759.4	71.6,71.6
70	101.3	96.97	75.64	95.76	95.73	76.29	80.71	64.04	60- 70	113.7	873.1	82.3,82.3
80	54.13	45.31	23.71	40.85	30.66	35.32	26.64	25.45	70- 80	60.79	933.9	88,88
90	24.23	18.78	1.730	18.44	18.00	16.94	2.020	21.07	80- 90	26.75	960.7	90.5,90.5
100	14.70	11.88	1.465	13.15	11.92	13.24	1.368	18.76	90-100	18.99	979.7	92.3,92.3
110	11.24	10.46	1.818	9.353	8.810	9.879	1.791	16.91	100-110	17.47	997.1	94,94
120	10.07	9.833	2.200	8.776	9.677	8.962	2.247	16.04	110-120	15.33	1012	95.4,95.4
130	10.76	8.481	2.599	4.966	9.420	4.959	2.670	13.33	120-130	14.06	1027	96.7,96.7
140	9.814	4.860	3.043	3.503	5.400	3.488	3.097	10.51	130-140	13.03	1040	98,98
150	6.688	3.855	3.492	3.581	3.837	3.665	3.522	9.582	140-150	11.04	1051	99,99
160	4.750	3.795	3.878	3.925	3.980	3.985	3.902	9.693	150-160	6.393	1057	99.6,99.6
170	4.162	4.209	4.184	4.194	4.276	4.239	4.194	10.96	160-170	3.030	1060	99.9,99.9
180	4.399	4.345	4.360	4.336	4.407	4.342	4.362	11.96	170-180	0.9982	1061	100,100
DEG	LUMINOUS INTENSITY:cd									UNIT:lm		

C Range: 0 - 360DEG
 C Interval: 15.0DEG
 Test Speed: HIGH
 Temperature:25.3°C
 Operators:DAMIN
 Test Date:2024-07-09

γ Range: 0 - 180DEG
 γ Interval: 1.0DEG
 Test System:EVERFINE GO-2000B_V1 SYSTEM V2.00.471
 Humidity:65.0%
 Test Distance:4.880m [K=1.0000]
 Remarks:

LUMINANCE LIMITATION CURVES

NAME: LED Strip	TYPE: Indoor lighting	WEIGHT: 75g
SPEC.: LED	DIM.: 1000*10*5MM	SERIAL No.: 20240709003
MFR.: EVERFINE	SUR.: 1000*10MM	Shielding Angle:



LUMINANCE cd/ (m2)		
G (DEG)	C0/180	C90/270
85	40032	9423
80	31170	13653
75	28320	17843
70	29629	22116
65	36291	26022
60	39021	29388
55	38113	31812
50	37308	33423
45	37254	34460

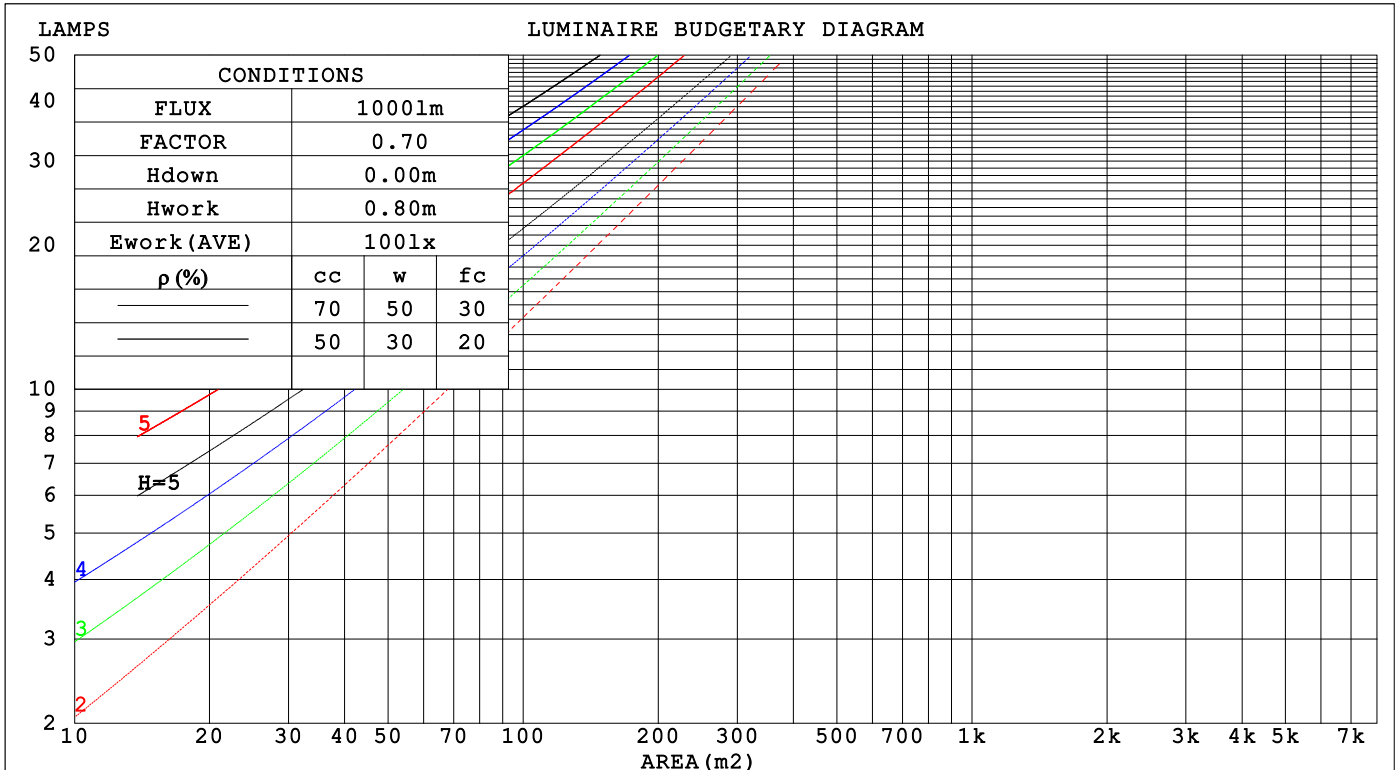
C Range: 0 - 360DEG
 C Interval: 15.0DEG
 Test Speed: HIGH
 Temperature: 25.3°C
 Operators: DAMIN
 Test Date: 2024-07-09

γ Range: 0 - 180DEG
 γ Interval: 1.0DEG
 Test System: EVERFINE GO-2000B_V1 SYSTEM V2.00.471
 Humidity: 65.0%
 Test Distance: 4.880m [K=1.0000]
 Remarks:

CU AND LUMINAIRE BUDGETARY ESTIMATE DIAGRAM

NAME: LED Strip	TYPE: Indoor lighting	WEIGHT: 75g
SPEC.: LED	DIM.: 1000*10*5MM	SERIAL No.: 20240709003
MFR.: EVERFINE	SUR.: 1000*10MM	Shielding Angle:

pcc	80%			70%			50%			30%			10%			0
p _w	50%	30%	10%	50%	30%	10%	50%	30%	10%	50%	30%	10%	50%	30%	10%	0
p _{fc}	20%			20%			20%			20%			20%			0
RCR	RCR:Room Cavity Ratio						Coefficients of Utilization(CU)									
0.0	1.17	1.17	1.17	1.13	1.13	1.13	1.06	1.06	1.06	.99	.99	.99	.93	.93	.93	.91
1.0	1.02	.97	.93	.98	.95	.91	.92	.89	.86	.87	.84	.82	.82	.80	.78	.75
2.0	.89	.82	.76	.86	.80	.74	.81	.76	.71	.76	.72	.68	.72	.68	.65	.63
3.0	.78	.70	.63	.75	.68	.62	.71	.65	.60	.67	.62	.58	.63	.59	.55	.53
4.0	.69	.60	.53	.67	.59	.53	.63	.56	.51	.60	.54	.49	.57	.52	.48	.45
5.0	.61	.53	.46	.60	.51	.45	.57	.49	.44	.54	.47	.43	.51	.46	.41	.39
6.0	.55	.46	.40	.54	.45	.39	.51	.44	.38	.48	.42	.37	.46	.41	.36	.34
7.0	.50	.41	.35	.49	.41	.35	.46	.39	.34	.44	.38	.33	.42	.36	.32	.30
8.0	.46	.37	.31	.44	.36	.31	.42	.35	.30	.40	.34	.29	.39	.33	.29	.27
9.0	.42	.34	.28	.41	.33	.28	.39	.32	.27	.37	.31	.27	.36	.30	.26	.24
10.0	.38	.31	.25	.38	.30	.25	.36	.29	.25	.34	.28	.24	.33	.27	.24	.22



C Range: 0 - 360DEG
 C Interval: 15.0DEG
 Test Speed: HIGH
 Temperature:25.3°C
 Operators:DAMIN
 Test Date:2024-07-09

γ Range: 0 - 180DEG
 γ Interval: 1.0DEG
 Test System:EVERFINE GO-2000B_V1 SYSTEM V2.00.471
 Humidity:65.0%
 Test Distance:4.880m [K=1.0000]
 Remarks:

WEC AND CCEC

NAME: LED Strip	TYPE: Indoor lighting	WEIGHT: 75g
SPEC.: LED	DIM.: 1000*10*5MM	SERIAL No.: 20240709003
MFR.: EVERFINE	SUR.: 1000*10MM	Shielding Angle:

ρ_{cc}	80%			70%			50%			30%			10%			0
ρ_w	50%	30%	10%	50%	30%	10%	50%	30%	10%	50%	30%	10%	50%	30%	10%	0
ρ_{fc}	20%			20%			20%			20%			20%			0
RCR	RCR:Room Cavity Ratio						Wall Exitance Coefficients(WEC)									
0.0																
1.0	.310	.176	.056	.300	.171	.054	.281	.161	.051	.264	.152	.049	.248	.144	.046	
2.0	.288	.158	.048	.279	.154	.047	.262	.146	.045	.247	.139	.043	.233	.132	.042	
3.0	.266	.141	.042	.258	.138	.042	.243	.132	.040	.229	.125	.038	.216	.120	.037	
4.0	.245	.127	.037	.238	.124	.037	.224	.119	.036	.212	.114	.034	.200	.109	.033	
5.0	.227	.115	.033	.220	.113	.033	.208	.108	.032	.197	.104	.031	.186	.099	.030	
6.0	.210	.105	.030	.204	.103	.030	.193	.099	.029	.183	.095	.028	.174	.091	.027	
7.0	.196	.097	.027	.190	.095	.027	.180	.091	.026	.171	.088	.026	.162	.084	.025	
8.0	.183	.089	.025	.178	.088	.025	.169	.084	.024	.160	.081	.023	.152	.078	.023	
9.0	.171	.083	.023	.167	.081	.023	.159	.078	.022	.151	.076	.022	.143	.073	.021	
10.0	.161	.077	.021	.157	.076	.021	.150	.073	.021	.142	.071	.020	.136	.068	.020	

ρ_{cc}	80%			70%			50%			30%			10%			0
ρ_w	50%	30%	10%	50%	30%	10%	50%	30%	10%	50%	30%	10%	50%	30%	10%	0
ρ_{fc}	20%			20%			20%			20%			20%			0
RCR	RCR:Room Cavity Ratio						Ceiling Cavity Exitance Coefficients(CCEC)									
0.0	.263	.263	.263	.224	.224	.224	.153	.153	.153	.088	.088	.088	.028	.028	.028	
1.0	.253	.229	.207	.216	.196	.178	.148	.135	.123	.085	.078	.072	.027	.025	.023	
2.0	.245	.205	.172	.210	.177	.148	.144	.122	.103	.083	.071	.061	.027	.023	.020	
3.0	.237	.188	.148	.203	.162	.129	.140	.113	.090	.081	.066	.053	.026	.021	.017	
4.0	.230	.175	.133	.197	.151	.115	.136	.105	.081	.078	.062	.048	.025	.020	.016	
5.0	.222	.165	.122	.191	.142	.106	.132	.099	.075	.076	.058	.044	.025	.019	.015	
6.0	.215	.156	.114	.185	.135	.099	.128	.095	.070	.074	.056	.042	.024	.018	.014	
7.0	.209	.150	.108	.180	.130	.094	.124	.091	.067	.072	.054	.040	.023	.018	.013	
8.0	.202	.144	.104	.174	.125	.090	.121	.088	.064	.070	.052	.038	.023	.017	.013	
9.0	.197	.139	.100	.169	.121	.088	.117	.085	.062	.068	.050	.037	.022	.016	.012	
10.0	.191	.135	.098	.165	.117	.085	.114	.082	.061	.067	.049	.036	.022	.016	.012	

C Range: 0 - 360DEG
 C Interval: 15.0DEG
 Test Speed: HIGH
 Temperature:25.3°C
 Operators:DAMIN
 Test Date:2024-07-09

γ Range: 0 - 180DEG
 γ Interval: 1.0DEG
 Test System:EVERFINE GO-2000B_V1 SYSTEM V2.00.471
 Humidity:65.0%
 Test Distance:4.880m [K=1.0000]
 Remarks:

UGR(Unified Glare Rating) Table

NAME: LED Strip		TYPE: Indoor lighting				WEIGHT: 75g					
SPEC.: LED		DIM.: 1000*10*5MM				SERIAL No.: 20240709003					
MFR.: EVERFINE		SUR.: 1000*10MM				Shielding Angle:					
ceiling/cavity		0.7	0.7	0.5	0.5	0.3	0.7	0.7	0.5	0.5	0.3
walls		0.5	0.3	0.5	0.3	0.3	0.5	0.3	0.5	0.3	0.3
working plane		0.2	0.2	0.2	0.2	0.2	0.2	0.2	0.2	0.2	0.2
Room dimensions		Viewed crosswise					Viewed endwise				
x = 2H y = 2H		25.5	26.8	25.9	27.2	27.6	24.7	26.1	25.1	26.5	26.9
	3H	26.8	28.1	27.3	28.5	28.9	25.9	27.2	26.3	27.6	28.0
	4H	27.3	28.5	27.7	28.9	29.4	26.3	27.5	26.7	27.9	28.3
	6H	27.8	28.9	28.2	29.3	29.8	26.4	27.5	26.9	28.0	28.4
	8H	28.0	29.1	28.5	29.6	30.0	26.4	27.5	26.9	27.9	28.4
	12H	28.3	29.3	28.7	29.8	30.3	26.4	27.4	26.9	27.9	28.4
	4H	25.9	27.1	26.4	27.5	28.0	25.3	26.5	25.8	26.9	27.4
	3H	27.5	28.5	27.9	29.0	29.5	26.6	27.7	27.1	28.1	28.6
	4H	28.0	29.0	28.5	29.5	30.0	27.1	28.0	27.6	28.5	29.0
	6H	28.7	29.5	29.2	30.0	30.6	27.3	28.2	27.9	28.7	29.3
	8H	29.0	29.8	29.5	30.3	30.9	27.4	28.2	27.9	28.7	29.3
	12H	29.3	30.0	29.9	30.6	31.2	27.4	28.1	28.0	28.7	29.3
	8H	28.2	29.0	28.7	29.5	30.1	27.3	28.1	27.9	28.6	29.2
	6H	29.0	29.6	29.6	30.2	30.8	27.7	28.4	28.3	28.9	29.6
	8H	29.4	30.0	30.0	30.6	31.2	27.9	28.4	28.5	29.0	29.7
	12H	29.9	30.4	30.5	31.0	31.7	27.9	28.4	28.6	29.0	29.7
	12H	28.2	28.9	28.7	29.4	30.0	27.4	28.1	27.9	28.6	29.2
	6H	29.0	29.6	29.6	30.2	30.8	27.8	28.4	28.4	29.0	29.6
	8H	29.5	30.0	30.1	30.6	31.3	28.0	28.5	28.6	29.1	29.8
Variations with the observer position at spacings(CIE Pub.117):											
S = 1.0H		+ 0.2 / - 0.2					+ 0.2 / - 0.3				
1.5H		+ 0.1 / - 0.3					+ 0.4 / - 0.6				
2.0H		+ 0.3 / - 0.4					+ 0.3 / - 0.6				

CIE Pub.117, 1061 lm Total Lamp Luminous Flux Correct (8log(F/F0) = 0.2)
 Area: 0.01 m2

C Range: 0 - 360DEG
 C Interval: 15.0DEG
 Test Speed: HIGH
 Temperature:25.3°C
 Operators:DAMIN
 Test Date:2024-07-09

γ Range: 0 - 180DEG
 γ Interval: 1.0DEG
 Test System:EVERFINE GO-2000B_V1 SYSTEM V2.00.471
 Humidity:65.0%
 Test Distance:4.880m [K=1.0000]
 Remarks:

UTILIZATION FACTORS TABLE

NAME: LED Strip	TYPE: Indoor lighting	WEIGHT: 75g
SPEC.: LED	DIM.: 1000*10*5MM	SERIAL No.: 20240709003
MFR.: EVERFINE	SUR.: 1000*10MM	Shielding Angle:

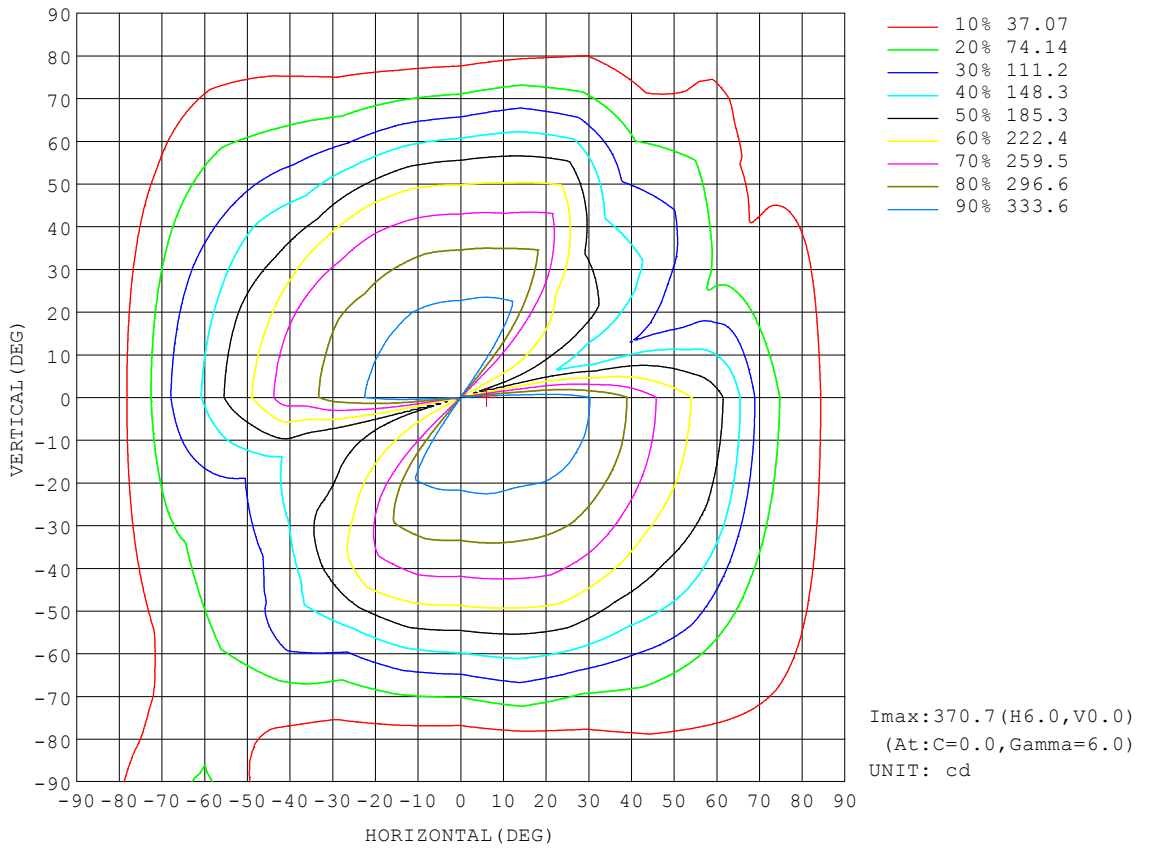
REFLECTANCE										
Ceiling	0.8	0.8	0.8	0.7	0.7	0.7	0.5	0.5	0.5	0
Walls	0.7	0.5	0.3	0.7	0.5	0.3	0.7	0.5	0.3	0
Working plane	0.2	0.2	0.2	0.2	0.2	0.2	0.2	0.2	0.2	0
ROOM INDEX	UTILIZATION FACTORS (PERCENT) $k(RI) \times RCR = 5$									
$k = 0.60$	55	43	36	54	43	36	52	42	35	29
0.80	65	53	45	63	52	45	61	51	44	37
1.00	73	62	54	71	61	54	68	61	53	45
1.25	80	69	62	78	68	61	74	66	60	51
1.50	85	75	68	83	73	67	79	71	65	56
2.00	92	83	76	89	81	75	85	78	73	63
2.50	96	88	81	93	86	80	88	82	77	67
3.00	99	92	86	96	90	84	91	86	81	70
4.00	103	97	92	100	95	90	94	90	86	75
5.00	106	101	96	102	98	94	96	93	89	77
ROOM INDEX	UF(total)									Direct
According to DIN EN 13032-2 2004			Suspended				SHRNOM = 1.25			

C Range: 0 - 360DEG
 C Interval: 15.0DEG
 Test Speed: HIGH
 Temperature: 25.3°C
 Operators: DAMIN
 Test Date: 2024-07-09

γ Range: 0 - 180DEG
 γ Interval: 1.0DEG
 Test System: EVERFINE GO-2000B_V1 SYSTEM V2.00.471
 Humidity: 65.0%
 Test Distance: 4.880m [K=1.0000]
 Remarks:

ISOCANDELA DIAGRAM

NAME: LED Strip	TYPE: Indoor lighting	WEIGHT: 75g
SPEC.: LED	DIM.: 1000*10*5MM	SERIAL No.: 20240709003
MFR.: EVERFINE	SUR.: 1000*10MM	Shielding Angle:

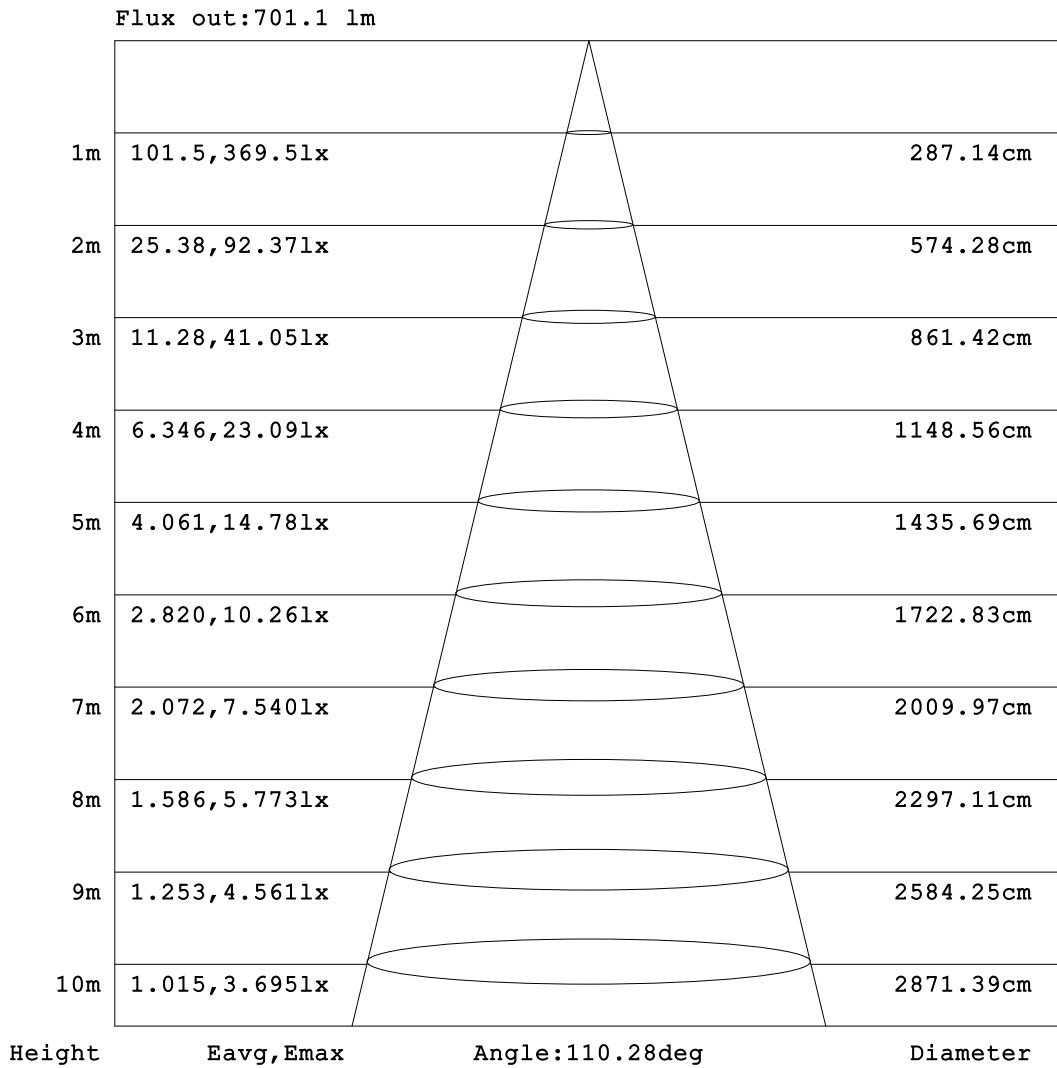


C Range: 0 - 360DEG
 C Interval: 15.0DEG
 Test Speed: HIGH
 Temperature: 25.3°C
 Operators: DAMIN
 Test Date: 2024-07-09

γ Range: 0 - 180DEG
 γ Interval: 1.0DEG
 Test System: EVERFINE GO-2000B_V1 SYSTEM V2.00.471
 Humidity: 65.0%
 Test Distance: 4.880m [K=1.0000]
 Remarks:

AAI Figure

NAME: LED Strip	TYPE: Indoor lighting	WEIGHT: 75g
SPEC.: LED	DIM.: 1000*10*5MM	SERIAL No.: 20240709003
MFR.: EVERFINE	SUR.: 1000*10MM	Shielding Angle:



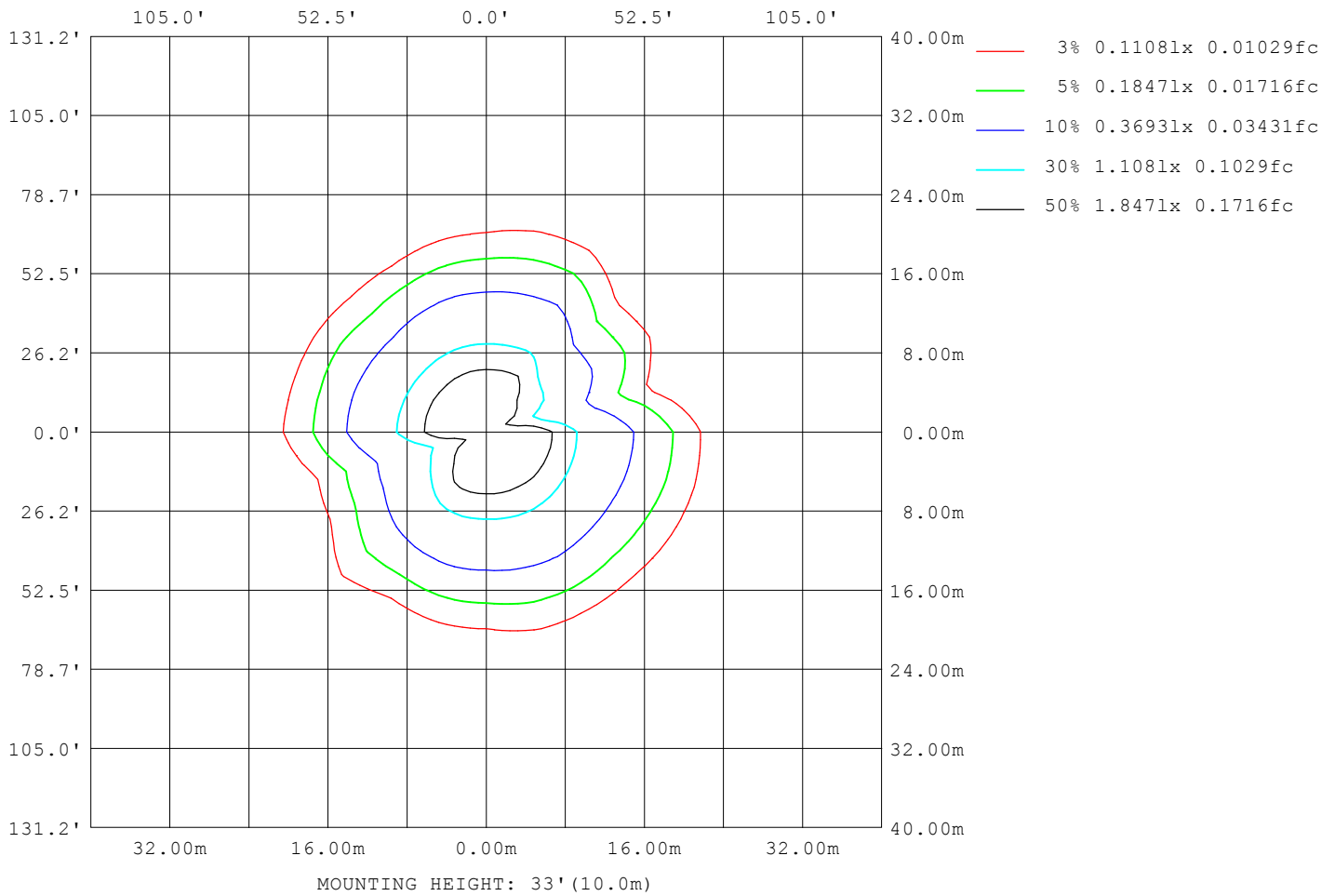
Note: The Curves indicate the illuminated area and the average illumination when the luminaire is at different distance.

C Range: 0 - 360DEG
 C Interval: 15.0DEG
 Test Speed: HIGH
 Temperature: 25.3°C
 Operators: DAMIN
 Test Date: 2024-07-09

γ Range: 0 - 180DEG
 γ Interval: 1.0DEG
 Test System: EVERFINE GO-2000B_V1 SYSTEM V2.00.471
 Humidity: 65.0%
 Test Distance: 4.880m [K=1.0000]
 Remarks:

ISOLUX DIAGRAM

NAME: LED Strip	TYPE: Indoor lighting	WEIGHT: 75g
SPEC.: LED	DIM.: 1000*10*5MM	SERIAL No.: 20240709003
MFR.: EVERFINE	SUR.: 1000*10MM	Shielding Angle:



C Range: 0 - 360DEG
 C Interval: 15.0DEG
 Test Speed: HIGH
 Temperature: 25.3°C
 Operators: DAMIN
 Test Date: 2024-07-09

γ Range: 0 - 180DEG
 γ Interval: 1.0DEG
 Test System: EVERFINE GO-2000B_V1 SYSTEM V2.00.471
 Humidity: 65.0%
 Test Distance: 4.880m [K=1.0000]
 Remarks:

LED Avg.L Report

NAME: LED Strip	TYPE: Indoor lighting	WEIGHT: 75g
SPEC.: LED	DIM.: 1000*10*5MM	SERIAL No.: 20240709003
MFR.: EVERFINE	SUR.: 1000*10MM	Shielding Angle:

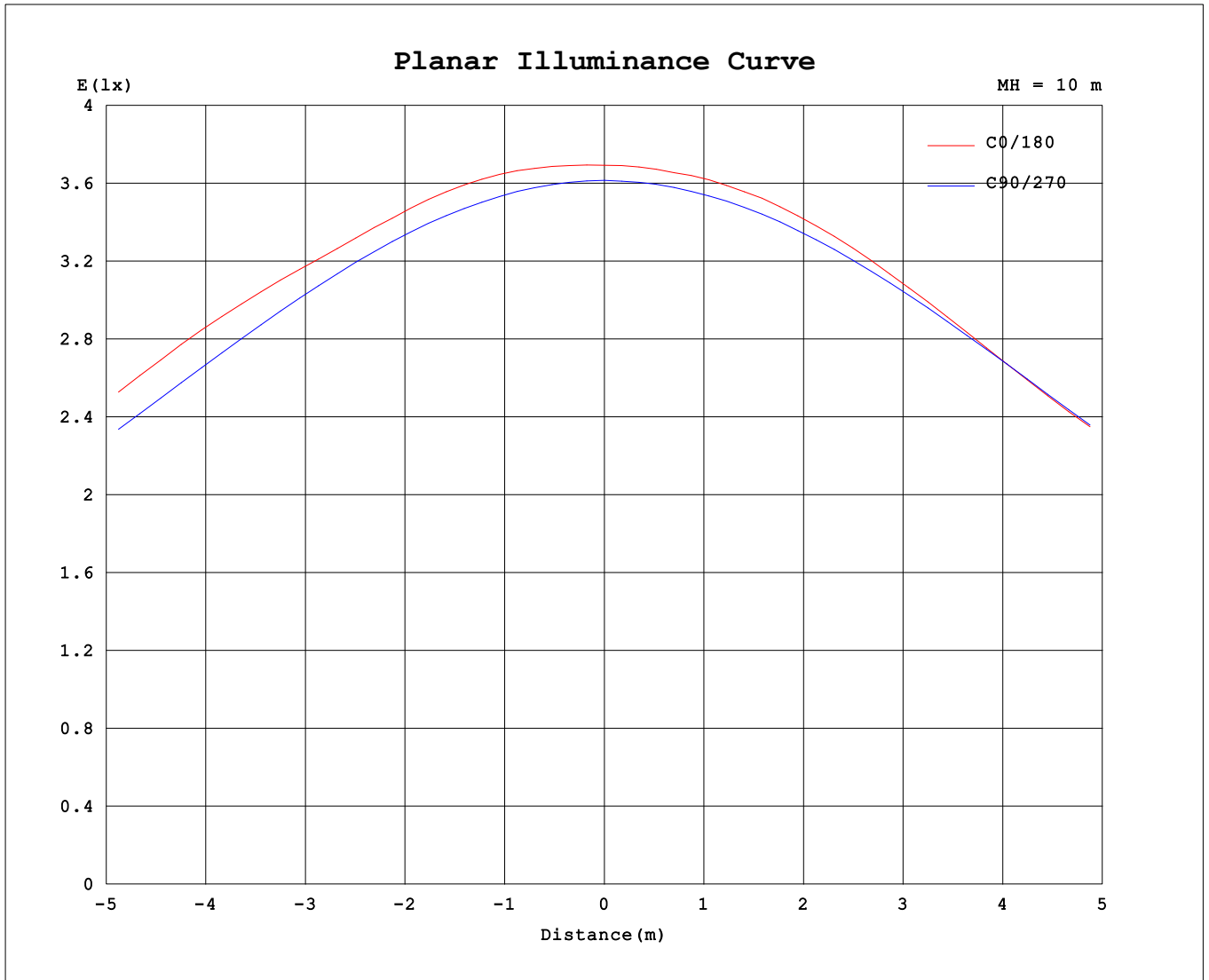
AvgL	cd/m2
L_0~180 (65) av	33178
L_0~180 (75) av	24896
L_0~180 (85) av	32476
L_90~270 (65) av	26710
L_90~270 (75) av	18588
L_90~270 (85) av	10848
L_45 (65) av	26582
L_45 (75) av	21537
L_45 (85) av	26522

Standard: GB/T 29293-2012

C Range: 0 - 360DEG
 C Interval: 15.0DEG
 Test Speed: HIGH
 Temperature:25.3°C
 Operators:DAMIN
 Test Date:2024-07-09

γ Range: 0 - 180DEG
 γ Interval: 1.0DEG
 Test System:EVERFINE GO-2000B_V1 SYSTEM V2.00.471
 Humidity:65.0%
 Test Distance:4.880m [K=1.0000]
 Remarks:

Planar Illuminance Curve



C Range: 0 - 360DEG
 C Interval: 15.0DEG
 Test Speed: HIGH
 Temperature: 25.3°C
 Operators: DAMIN
 Test Date: 2024-07-09

γ Range: 0 - 180DEG
 γ Interval: 1.0DEG
 Test System: EVERFINE GO-2000B_V1 SYSTEM V2.00.471
 Humidity: 65.0%
 Test Distance: 4.880m [K=1.0000]
 Remarks:

LUMINOUS DISTRIBUTION INTENSITY DATA

NAME: LED Strip	TYPE: Indoor lighting	WEIGHT: 75g
SPEC.: LED	DIM.: 1000*10*5MM	SERIAL No.: 20240709003
MFR.: EVERFINE	SUR.: 1000*10MM	Shielding Angle:

Table--1

UNIT: cd

C (DEG) γ (DEG)	0	15	30	45	60	75	90	105	120	135	150	165	180	195	210	225	240	255	270
0	369	368	364	363	362	362	362	361	362	259	226	175	369	368	364	363	362	362	362
5	371	369	365	363	362	361	360	359	360	261	227	177	368	366	363	361	360	360	360
10	368	367	364	362	359	357	355	355	356	261	225	178	364	362	359	357	357	356	356
15	362	361	357	356	354	350	348	348	349	259	220	176	355	353	351	351	350	349	349
20	359	357	351	347	344	341	338	338	339	254	213	173	342	339	338	339	341	340	340
25	351	350	345	338	332	329	325	326	325	246	205	168	326	323	323	324	327	328	328
30	335	335	332	327	318	315	309	311	308	238	195	162	313	311	307	306	311	313	313
35	315	315	312	312	303	297	290	293	289	227	183	156	288	286	289	290	291	295	294
40	291	292	290	290	285	276	269	271	266	216	177	155	280	274	268	267	271	273	273
45	263	263	262	264	263	252	244	246	240	209	165	143	250	243	241	241	246	249	249
50	240	238	232	234	236	224	215	217	213	182	138	123	217	209	199	198	213	221	221
55	219	214	204	201	205	194	182	184	171	155	116	106	189	183	173	161	171	185	189
60	195	191	176	166	169	162	147	145	134	143	101	93.7	153	147	145	128	133	147	153
65	153	155	146	132	128	128	110	109	98.7	128	88.5	84.3	127	119	111	102	97.3	110	116
70	101	102	107	97.0	88.5	94.1	75.6	76.0	69.0	95.8	81.1	71.0	95.7	94.5	85.8	76.3	67.6	75.4	80.7
75	73.3	69.3	67.8	68.3	56.0	59.3	46.2	47.7	45.8	57.9	70.2	51.6	55.6	59.4	65.4	53.2	44.4	46.9	50.0
80	54.1	51.5	47.0	45.3	34.4	30.3	23.7	26.0	27.7	40.9	61.4	36.3	30.7	33.3	40.5	35.3	26.6	24.9	26.6
85	34.9	34.2	31.9	28.7	19.9	13.7	8.21	12.0	16.2	26.8	66.4	34.1	21.7	22.5	25.5	23.2	15.4	10.8	10.7
90	24.2	24.2	22.1	18.8	12.2	5.80	1.73	6.37	11.8	18.4	81.9	43.6	18.0	17.8	17.8	16.9	11.2	5.65	2.02
95	17.5	17.3	16.6	14.4	9.11	4.40	1.44	5.57	10.6	15.3	86.8	59.0	16.7	16.5	16.0	14.0	10.4	5.09	1.35
100	14.7	14.4	13.7	11.9	8.53	4.49	1.47	4.77	10.5	13.2	89.4	75.5	11.9	12.5	13.6	13.2	9.96	4.60	1.37
105	12.3	12.1	11.5	10.4	7.99	4.48	1.63	4.14	9.21	10.4	88.7	91.6	9.15	9.62	10.5	11.2	9.39	3.72	1.57
110	11.2	11.1	11.0	10.5	8.22	4.55	1.82	2.97	7.86	9.35	83.0	96.2	8.81	9.26	9.69	9.88	8.05	2.66	1.79
115	10.5	10.4	10.6	10.3	8.01	4.24	2.00	2.37	6.82	9.29	71.3	92.4	9.17	9.58	9.79	9.48	6.72	2.39	2.02
120	10.1	10.2	10.4	9.83	7.47	3.46	2.20	2.33	4.80	8.78	77.1	94.1	9.68	10.0	10.0	8.96	4.70	2.41	2.25
125	10.3	10.4	10.3	9.21	6.95	2.73	2.40	2.45	3.51	7.18	82.3	93.8	10.1	10.3	9.64	7.22	3.42	2.57	2.46
130	10.8	10.8	10.0	8.48	5.23	2.65	2.60	2.66	3.05	4.97	81.1	93.4	9.42	9.18	7.79	4.96	3.06	2.76	2.67
135	10.8	10.6	8.85	6.74	3.94	2.78	2.82	2.87	2.99	4.11	97.6	96.1	7.22	6.82	5.52	4.00	3.06	2.96	2.88
140	9.81	8.95	6.79	4.86	3.48	2.97	3.04	3.09	3.14	3.50	113	99.8	5.40	5.20	4.51	3.49	3.24	3.17	3.10
145	8.13	6.50	4.94	4.18	3.34	3.18	3.26	3.31	3.33	3.43	127	98.6	4.57	4.41	3.85	3.49	3.42	3.37	3.31
150	6.69	4.80	4.37	3.85	3.37	3.41	3.49	3.54	3.55	3.58	74.6	97.8	3.84	3.72	3.69	3.67	3.62	3.58	3.52
155	5.73	4.29	4.03	3.70	3.58	3.63	3.69	3.74	3.73	3.77	15.5	84.5	3.82	3.81	3.84	3.83	3.80	3.77	3.72
160	4.75	3.99	3.84	3.80	3.82	3.85	3.88	3.91	3.90	3.93	2.83	26.8	3.98	3.95	3.99	3.99	3.96	3.94	3.90
165	4.03	3.99	3.97	4.04	4.04	4.02	4.04	4.07	4.06	4.07	2.72	2.15	4.14	4.09	4.13	4.12	4.11	4.09	4.06
170	4.16	4.13	4.14	4.21	4.17	4.16	4.18	4.20	4.18	4.19	2.60	2.15	4.28	4.23	4.24	4.24	4.23	4.21	4.19
175	4.30	4.27	4.28	4.28	4.27	4.29	4.30	4.31	4.28	4.29	4.21	2.63	4.36	4.33	4.32	4.31	4.32	4.31	4.30
180	4.40	4.37	4.35	4.35	4.36	4.37	4.36	4.36	4.33	4.34	117	80.3	4.41	4.37	4.35	4.34	4.36	4.36	4.36

C Range: 0 - 360DEG
 C Interval: 15.0DEG
 Test Speed: HIGH
 Temperature:25.3℃
 Operators:DAMIN
 Test Date:2024-07-09

γ Range: 0 - 180DEG
 γ Interval: 1.0DEG
 Test System:EVERFINE GO-2000B_V1 SYSTEM V2.00.471
 Humidity:65.0%
 Test Distance:4.880m [K=1.0000]
 Remarks:

LUMINOUS DISTRIBUTION INTENSITY DATA

NAME: LED Strip	TYPE: Indoor lighting	WEIGHT: 75g
SPEC.: LED	DIM.: 1000*10*5MM	SERIAL No.: 20240709003
MFR.: EVERFINE	SUR.: 1000*10MM	Shielding Angle:

Table--2

UNIT: cd

C (DEG) \ γ (DEG)	285	300	315	330	345														
0	361	362	259	226	175														
5	360	361	258	226	173														
10	357	359	256	226	171														
15	351	355	252	223	165														
20	343	346	243	217	157														
25	332	335	235	212	142														
30	317	321	226	207	123														
35	299	308	216	195	113														
40	279	291	199	180	112														
45	255	270	178	167	107														
50	229	244	156	153	96.5														
55	200	214	133	137	86.4														
60	169	178	110	121	77.6														
65	135	138	87.9	99.4	64.4														
70	100	99.5	64.0	78.8	44.4														
75	65.0	67.1	43.5	49.8	34.5														
80	35.4	42.3	25.4	42.3	28.3														
85	16.7	25.8	13.7	12.7	22.5														
90	7.78	10.1	21.1	14.9	20.3														
95	5.09	10.7	19.4	22.9	18.7														
100	4.98	9.44	18.8	28.2	18.2														
105	4.82	8.45	17.2	26.3	20.0														
110	4.85	8.52	16.9	23.9	20.7														
115	4.73	8.35	17.2	23.2	24.7														
120	4.14	7.83	16.0	22.0	31.6														
125	3.59	7.41	14.3	20.9	43.5														
130	3.49	6.08	13.3	19.6	62.4														
135	3.39	5.13	12.4	18.0	84.0														
140	3.32	4.81	10.5	16.1	98.6														
145	3.42	4.23	9.62	13.7	108														
150	3.59	3.95	9.58	12.1	120														
155	3.77	3.89	9.77	10.7	132														
160	3.92	3.98	9.69	9.72	144														
165	4.07	4.09	10.7	9.67	156														
170	4.23	4.18	11.0	9.81	146														
175	4.30	4.25	10.9	9.57	136														
180	4.37	4.33	12.0	9.82	86.9														

C Range: 0 - 360DEG
 C Interval: 15.0DEG
 Test Speed: HIGH
 Temperature:25.3°C
 Operators:DAMIN
 Test Date:2024-07-09

γ Range: 0 - 180DEG
 γ Interval: 1.0DEG
 Test System:EVERFINE GO-2000B_V1 SYSTEM V2.00.471
 Humidity:65.0%
 Test Distance:4.880m [K=1.0000]
 Remarks: