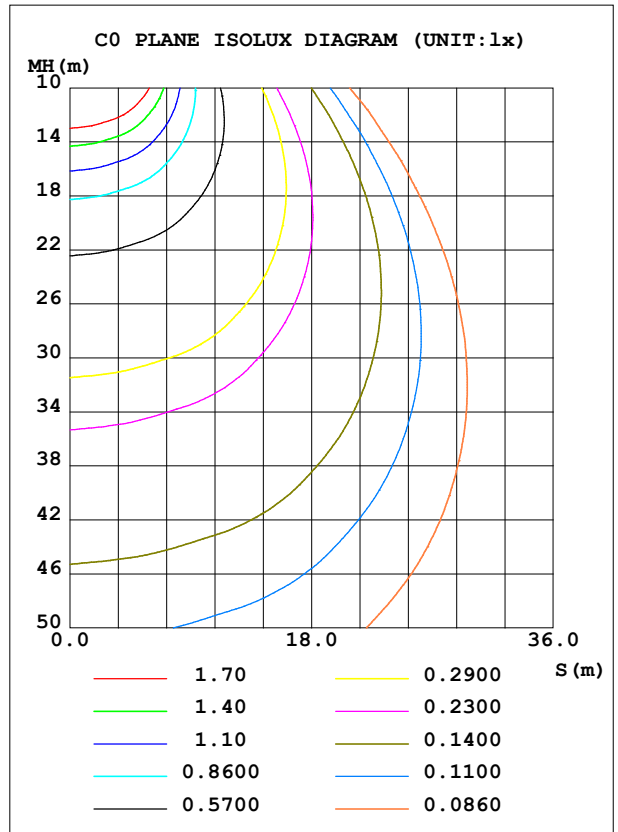
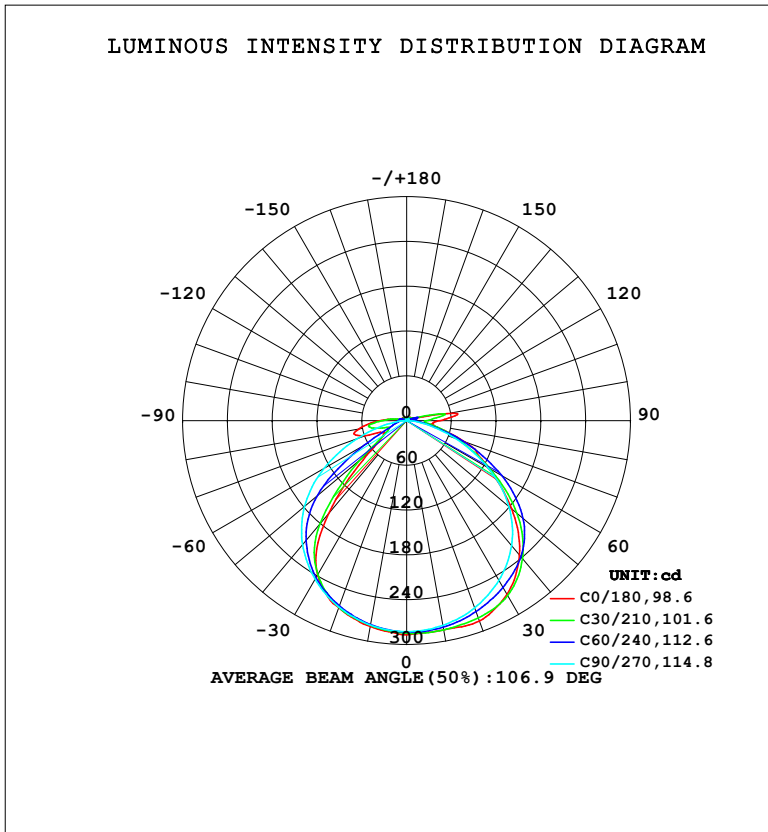


LUMINAIRE PHOTOMETRIC TEST REPORT

NAME: LED Strip	TYPE: Indoor lighting	WEIGHT: 75g
SPEC.: LED	DIM.: 1000*10*5MM	SERIAL No.: 20240709001
MFR.: EVERFINE	SUR.: 1000*10MM	Shielding Angle:

DATA OF LAMP		PHOTOMETRIC DATA			
HM0DET2W8C-XX-EU-HR-HQ1-WP-EP		Imax (cd)	287.8	S/MH (C0/180)	1.20
NOMINAL POWER (W)	9.21951	LOR (%)	100.0	S/MH (C90/270)	1.29
RATED VOLTAGE (V)	AC 230V	TOTAL FLUX (lm)	829.05	η UP, DN (C0-180)	3.2, 47.8
NOMINAL FLUX (lm)	829.05	CIE CLASS	DIRECT	η UP, DN (C180-360)	2.7, 46.3
LAMPS INSIDE	1	η up (%)	5.9	CIBSE SHR NOM	1.25
TEST VOLTAGE (V)	AC 230V	η down (%)	94.1	CIBSE SHR MAX	1.35



C Range: 0 - 360DEG
 C Interval: 15.0DEG
 Test Speed: HIGH
 Temperature: 25.3°C
 Operators: DAMIN
 Test Date: 2024-07-10

γ Range: 0 - 180DEG
 γ Interval: 1.0DEG
 Test System: EVERFINE GO-2000B_V1 SYSTEM V2.00.471
 Humidity: 65.0%
 Test Distance: 4.880m [K=1.0000]
 Remarks:

ZONAL FLUX DIAGRAM

ZONAL FLUX DIAGRAM:

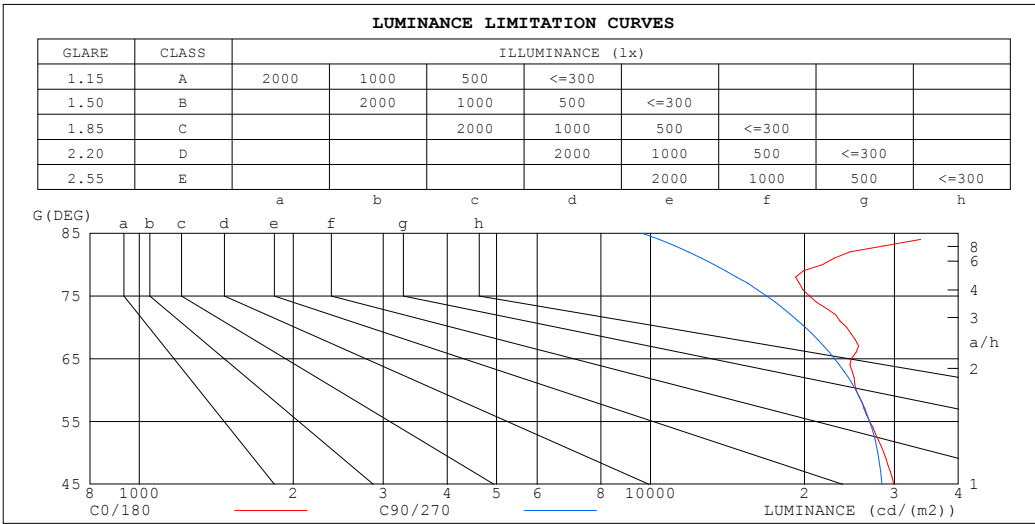
γ	C0	C45	C90	C135	C180	C225	C270	C315	γ	Φ zone	Φ total	%lum,lamp
10	284.7	282.8	278.6	277.6	280.1	277.4	278.2	281.9	0- 10	26.95	26.95	3.25,3.25
20	285.5	276.4	266.8	265.2	266.5	264.5	265.7	274.6	10- 20	78.12	105.1	12.7,12.7
30	269.0	266.0	247.2	242.6	238.7	240.0	245.4	263.2	20- 30	121.0	226.1	27.3,27.3
40	235.2	243.0	218.8	202.4	163.0	197.5	217.0	239.4	30- 40	147.0	373.1	45,45
50	183.8	200.4	179.0	119.4	63.08	111.6	178.6	198.6	40- 50	143.5	516.5	62.3,62.3
60	126.1	138.8	126.1	36.52	35.45	34.36	127.6	141.0	50- 60	112.8	629.4	75.9,75.9
70	82.73	73.49	68.68	19.25	59.04	19.87	70.24	75.45	60- 70	76.14	705.5	85.1,85.1
80	37.66	29.69	23.14	22.42	65.10	25.50	22.92	30.84	70- 80	47.23	752.7	90.8,90.8
90	44.90	14.71	1.474	19.00	35.66	21.30	1.942	13.64	80- 90	27.25	780.0	94.1,94.1
100	55.26	30.39	1.127	13.92	8.581	14.76	1.054	22.48	90-100	20.61	800.6	96.6,96.6
110	8.483	10.80	1.342	6.097	6.004	5.802	1.384	12.42	100-110	12.63	813.2	98.1,98.1
120	8.097	6.199	1.618	4.771	6.576	5.147	1.741	5.919	110-120	5.201	818.4	98.7,98.7
130	6.622	4.264	1.947	2.866	5.897	3.208	2.060	3.716	120-130	3.784	822.2	99.2,99.2
140	4.876	2.795	2.301	2.576	3.893	2.715	2.383	2.473	130-140	2.581	824.8	99.5,99.5
150	3.176	2.434	2.685	2.810	3.148	2.853	2.729	2.447	140-150	1.760	826.5	99.7,99.7
160	2.725	2.713	3.016	3.130	3.340	3.124	3.037	2.794	150-160	1.311	827.9	99.9,99.9
170	3.112	3.132	3.264	3.356	3.355	3.345	3.273	3.171	160-170	0.8779	828.7	100,100
180	3.427	3.397	3.402	3.427	3.428	3.393	3.407	3.426	170-180	0.3176	829.0	100,100
DEG	LUMINOUS INTENSITY:cd									UNIT:lm		

C Range: 0 - 360DEG
 C Interval: 15.0DEG
 Test Speed: HIGH
 Temperature:25.3°C
 Operators:DAMIN
 Test Date:2024-07-10

γ Range: 0 - 180DEG
 γ Interval: 1.0DEG
 Test System:EVERFINE GO-2000B_V1 SYSTEM V2.00.471
 Humidity:65.0%
 Test Distance:4.880m [K=1.0000]
 Remarks:

LUMINANCE LIMITATION CURVES

NAME: LED Strip	TYPE: Indoor lighting	WEIGHT: 75g
SPEC.: LED	DIM.: 1000*10*5MM	SERIAL No.: 20240709001
MFR.: EVERFINE	SUR.: 1000*10MM	Shielding Angle:



LUMINANCE cd/(m2)		
G (DEG)	C0/180	C90/270
85	41465	9633
80	21686	13323
75	20467	16865
70	24189	20082
65	24708	22911
60	25229	25219
55	26833	26827
50	28588	27842
45	29919	28354

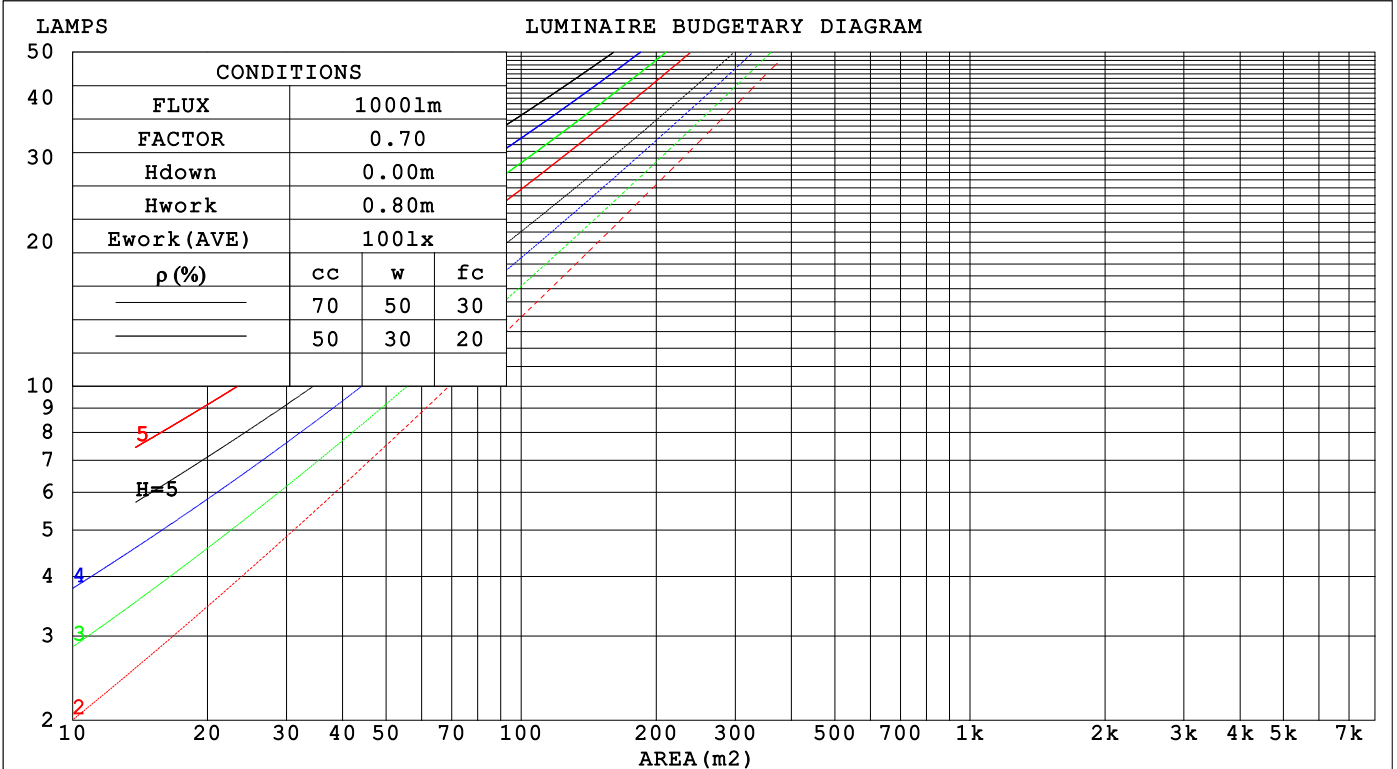
C Range: 0 - 360DEG
 C Interval: 15.0DEG
 Test Speed: HIGH
 Temperature: 25.3°C
 Operators: DAMIN
 Test Date: 2024-07-10

γ Range: 0 - 180DEG
 γ Interval: 1.0DEG
 Test System: EVERFINE GO-2000B_V1 SYSTEM V2.00.471
 Humidity: 65.0%
 Test Distance: 4.880m [K=1.0000]
 Remarks:

CU AND LUMINAIRE BUDGETARY ESTIMATE DIAGRAM

NAME: LED Strip	TYPE: Indoor lighting	WEIGHT: 75g
SPEC.: LED	DIM.: 1000*10*5MM	SERIAL No.: 20240709001
MFR.: EVERFINE	SUR.: 1000*10MM	Shielding Angle:

pcc	80%			70%			50%			30%			10%			0
	50%	30%	10%	50%	30%	10%	50%	30%	10%	50%	30%	10%	50%	30%	10%	0
p _w	50%	30%	10%	50%	30%	10%	50%	30%	10%	50%	30%	10%	50%	30%	10%	0
p _{fc}	20%			20%			20%			20%			20%			0
RCR	RCR:Room Cavity Ratio Coefficients of Utilization(CU)															
0.0	1.18	1.18	1.18	1.14	1.14	1.14	1.08	1.08	1.08	1.02	1.02	1.02	.97	.97	.97	.94
1.0	1.02	.98	.94	.90	.87	.83	.79	.75	.71	.67	.62	.58	.54	.50	.46	.42
2.0	.90	.83	.77	.71	.65	.60	.55	.50	.45	.40	.35	.30	.26	.22	.18	.14
3.0	.79	.71	.65	.60	.55	.50	.45	.40	.35	.30	.26	.22	.18	.14	.10	.06
4.0	.70	.62	.55	.50	.45	.40	.35	.30	.26	.22	.18	.14	.10	.06	.02	.00
5.0	.63	.54	.48	.43	.38	.33	.29	.24	.20	.16	.12	.08	.04	.00	.00	.00
6.0	.57	.48	.42	.37	.32	.27	.23	.19	.15	.11	.07	.03	.00	.00	.00	.00
7.0	.52	.43	.37	.32	.27	.22	.18	.14	.10	.06	.02	.00	.00	.00	.00	.00
8.0	.47	.39	.33	.28	.23	.18	.14	.10	.06	.02	.00	.00	.00	.00	.00	.00
9.0	.43	.35	.30	.25	.20	.15	.11	.07	.03	.00	.00	.00	.00	.00	.00	.00
10.0	.40	.32	.27	.22	.17	.12	.08	.04	.00	.00	.00	.00	.00	.00	.00	.00



C Range: 0 - 360DEG
 C Interval: 15.0DEG
 Test Speed: HIGH
 Temperature: 25.3°C
 Operators: DAMIN
 Test Date: 2024-07-10

γ Range: 0 - 180DEG
 γ Interval: 1.0DEG
 Test System: EVERFINE GO-2000B_V1 SYSTEM V2.00.471
 Humidity: 65.0%
 Test Distance: 4.880m [K=1.0000]
 Remarks:

WEC AND CCEC

NAME: LED Strip	TYPE: Indoor lighting	WEIGHT: 75g
SPEC.: LED	DIM.: 1000*10*5MM	SERIAL No.: 20240709001
MFR.: EVERFINE	SUR.: 1000*10MM	Shielding Angle:

ρ_{cc}	80%			70%			50%			30%			10%			0
ρ_w	50%	30%	10%	50%	30%	10%	50%	30%	10%	50%	30%	10%	50%	30%	10%	0
ρ_{fc}	20%			20%			20%			20%			20%			0
RCR	RCR:Room Cavity Ratio						Wall Exitance Coefficients(WEC)									
0.0																
1.0	.310	.176	.056	.301	.172	.055	.284	.163	.052	.269	.155	.050	.255	.148	.048	
2.0	.285	.156	.048	.277	.153	.047	.262	.146	.045	.249	.139	.044	.236	.133	.042	
3.0	.262	.139	.042	.255	.136	.041	.242	.131	.040	.230	.126	.039	.218	.121	.037	
4.0	.241	.125	.037	.235	.123	.036	.223	.118	.035	.212	.114	.034	.202	.110	.033	
5.0	.223	.114	.033	.218	.112	.033	.207	.108	.032	.197	.104	.031	.188	.101	.030	
6.0	.207	.104	.030	.202	.102	.029	.193	.099	.029	.184	.096	.028	.176	.092	.027	
7.0	.193	.096	.027	.189	.094	.027	.180	.091	.026	.172	.088	.026	.165	.086	.025	
8.0	.181	.088	.025	.177	.087	.025	.169	.084	.024	.162	.082	.024	.155	.079	.023	
9.0	.170	.082	.023	.166	.081	.023	.159	.079	.022	.152	.076	.022	.146	.074	.021	
10.0	.160	.077	.021	.156	.076	.021	.150	.073	.021	.144	.071	.020	.138	.069	.020	

ρ_{cc}	80%			70%			50%			30%			10%			0
ρ_w	50%	30%	10%	50%	30%	10%	50%	30%	10%	50%	30%	10%	50%	30%	10%	0
ρ_{fc}	20%			20%			20%			20%			20%			0
RCR	RCR:Room Cavity Ratio						Ceiling Cavity Exitance Coefficients(CCEC)									
0.0	.236	.236	.236	.201	.201	.201	.137	.137	.137	.079	.079	.079	.025	.025	.025	
1.0	.226	.202	.180	.193	.173	.155	.132	.119	.107	.076	.069	.062	.024	.022	.020	
2.0	.217	.178	.145	.186	.153	.125	.127	.106	.087	.073	.062	.051	.024	.020	.017	
3.0	.209	.160	.121	.179	.138	.105	.123	.096	.074	.071	.056	.044	.023	.018	.014	
4.0	.201	.147	.106	.173	.127	.092	.119	.089	.065	.069	.052	.038	.022	.017	.013	
5.0	.194	.137	.095	.166	.118	.082	.115	.083	.058	.066	.049	.034	.021	.016	.011	
6.0	.187	.128	.087	.160	.111	.075	.111	.078	.053	.064	.046	.032	.021	.015	.010	
7.0	.180	.122	.081	.155	.105	.070	.107	.074	.050	.062	.044	.030	.020	.014	.010	
8.0	.174	.116	.076	.150	.100	.066	.103	.071	.047	.060	.042	.028	.019	.014	.009	
9.0	.168	.111	.073	.145	.096	.063	.100	.068	.045	.058	.040	.027	.019	.013	.009	
10.0	.162	.107	.070	.140	.093	.061	.097	.065	.043	.057	.039	.026	.018	.013	.009	

C Range: 0 - 360DEG
 C Interval: 15.0DEG
 Test Speed: HIGH
 Temperature:25.3°C
 Operators:DAMIN
 Test Date:2024-07-10

γ Range: 0 - 180DEG
 γ Interval: 1.0DEG
 Test System:EVERFINE GO-2000B_V1 SYSTEM V2.00.471
 Humidity:65.0%
 Test Distance:4.880m [K=1.0000]
 Remarks:

UGR(Unified Glare Rating) Table

NAME: LED Strip	TYPE: Indoor lighting	WEIGHT: 75g
SPEC.: LED	DIM.: 1000*10*5MM	SERIAL No.: 20240709001
MFR.: EVERFINE	SUR.: 1000*10MM	Shielding Angle:

ceiling/cavity	0.7	0.7	0.5	0.5	0.3	0.7	0.7	0.5	0.5	0.3
walls	0.5	0.3	0.5	0.3	0.3	0.5	0.3	0.5	0.3	0.3
working plane	0.2	0.2	0.2	0.2	0.2	0.2	0.2	0.2	0.2	0.2

Room dimensions	Viewed crosswise					Viewed endwise				
x = 2H y = 2H	25.1	26.5	25.5	26.8	27.1	25.5	26.9	25.9	27.2	27.5
3H	26.6	27.9	26.9	28.2	28.5	26.8	28.1	27.2	28.5	28.8
4H	27.1	28.3	27.5	28.7	29.0	27.3	28.5	27.7	28.9	29.2
6H	27.5	28.6	27.9	29.0	29.4	27.5	28.6	27.9	29.0	29.4
8H	27.7	28.8	28.1	29.2	29.6	27.5	28.6	28.0	29.0	29.4
12H	28.1	29.2	28.6	29.6	30.0	27.5	28.6	28.0	29.0	29.4
4H 2H	25.7	26.9	26.1	27.3	27.6	26.0	27.2	26.4	27.6	28.0
3H	27.2	28.3	27.7	28.7	29.1	27.5	28.6	27.9	29.0	29.4
4H	27.9	28.9	28.4	29.3	29.7	28.1	29.0	28.5	29.5	29.9
6H	28.4	29.3	28.9	29.7	30.2	28.4	29.3	28.9	29.7	30.2
8H	28.7	29.5	29.2	30.0	30.5	28.5	29.3	29.0	29.8	30.3
12H	29.3	30.0	29.8	30.5	31.0	28.5	29.3	29.1	29.8	30.3
8H 4H	28.1	28.9	28.6	29.3	29.8	28.2	29.0	28.7	29.5	30.0
6H	28.7	29.4	29.3	29.9	30.5	28.7	29.3	29.2	29.8	30.4
8H	29.2	29.8	29.7	30.3	30.9	28.8	29.4	29.4	30.0	30.5
12H	29.9	30.4	30.5	31.0	31.6	29.0	29.5	29.5	30.0	30.6
12H 4H	28.0	28.8	28.6	29.3	29.8	28.2	28.9	28.7	29.4	29.9
6H	28.8	29.4	29.3	29.9	30.5	28.7	29.3	29.3	29.8	30.4
8H	29.3	29.8	29.8	30.3	30.9	28.9	29.4	29.5	30.0	30.6

Variations with the observer position at spacings(CIE Pub.117):		
S = 1.0H	+ 0.2 / - 0.2	+ 0.3 / - 0.3
1.5H	+ 0.2 / - 0.4	+ 0.5 / - 0.7
2.0H	+ 0.2 / - 0.3	+ 0.3 / - 0.9

CIE Pub.117, 829.0 lm Total Lamp Luminous Flux Correct (8log(F/F0) = -0.7)
 Area: 0.01 m2

C Range: 0 - 360DEG
 C Interval: 15.0DEG
 Test Speed: HIGH
 Temperature:25.3°C
 Operators:DAMIN
 Test Date:2024-07-10

γ Range: 0 - 180DEG
 γ Interval: 1.0DEG
 Test System:EVERFINE GO-2000B_V1 SYSTEM V2.00.471
 Humidity:65.0%
 Test Distance:4.880m [K=1.0000]
 Remarks:

UTILIZATION FACTORS TABLE

NAME: LED Strip	TYPE: Indoor lighting	WEIGHT: 75g
SPEC.: LED	DIM.: 1000*10*5MM	SERIAL No.: 20240709001
MFR.: EVERFINE	SUR.: 1000*10MM	Shielding Angle:

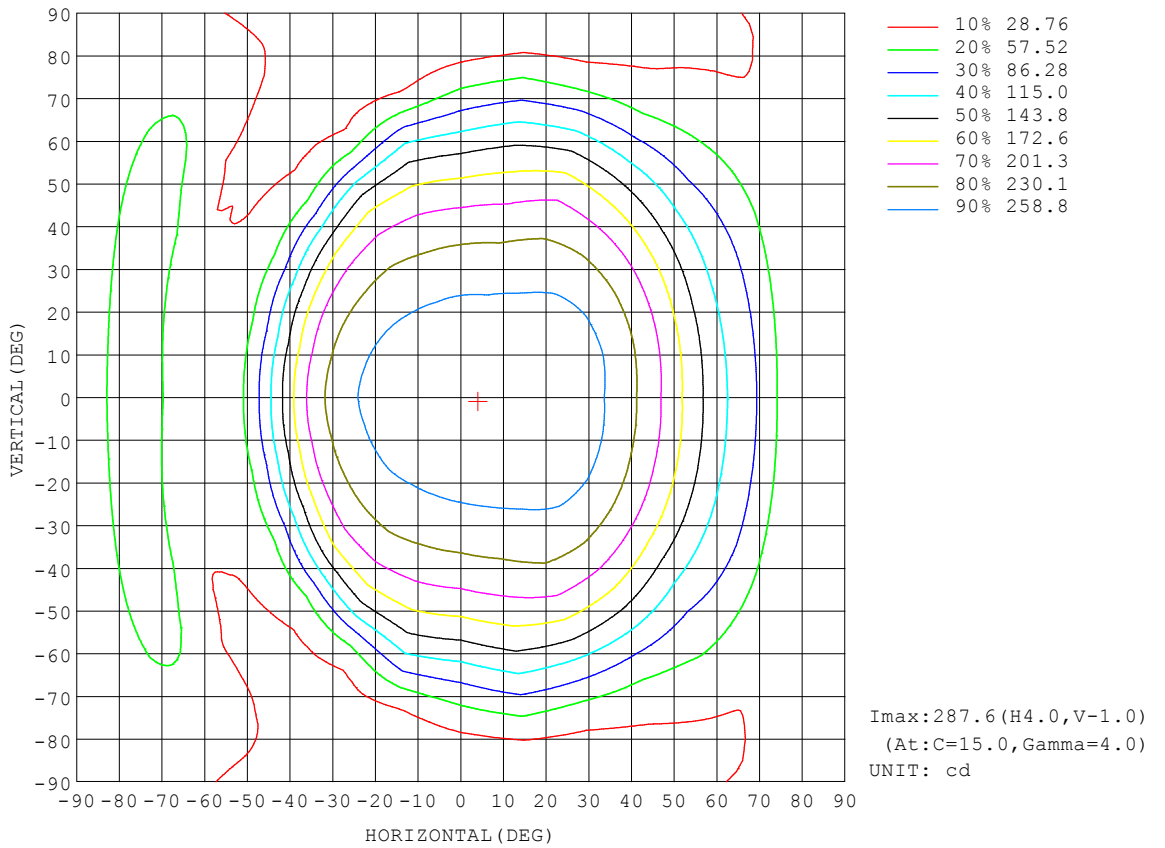
REFLECTANCE										
Ceiling	0.8	0.8	0.8	0.7	0.7	0.7	0.5	0.5	0.5	0
Walls	0.7	0.5	0.3	0.7	0.5	0.3	0.7	0.5	0.3	0
Working plane	0.2	0.2	0.2	0.2	0.2	0.2	0.2	0.2	0.2	0
ROOM INDEX	UTILIZATION FACTORS (PERCENT) $k(RI) \times RCR = 5$									
k = 0.60	57	46	39	57	46	39	55	45	39	33
0.80	67	56	49	66	55	48	64	54	48	41
1.00	75	64	57	74	64	57	71	65	56	49
1.25	82	72	65	81	71	64	78	69	63	56
1.50	87	77	70	85	76	69	82	74	68	60
2.00	94	85	78	91	83	77	87	81	75	67
2.50	97	89	83	95	88	82	90	84	80	70
3.00	100	93	88	98	91	86	93	88	84	74
4.00	104	98	93	102	96	92	96	92	88	78
5.00	107	101	97	104	99	95	98	95	91	81
ROOM INDEX	UF(total)									Direct
According to DIN EN 13032-2 2004			Suspended				SHRNOM = 1.25			

C Range: 0 - 360DEG
 C Interval: 15.0DEG
 Test Speed: HIGH
 Temperature: 25.3°C
 Operators: DAMIN
 Test Date: 2024-07-10

γ Range: 0 - 180DEG
 γ Interval: 1.0DEG
 Test System: EVERFINE GO-2000B_V1 SYSTEM V2.00.471
 Humidity: 65.0%
 Test Distance: 4.880m [K=1.0000]
 Remarks:

ISOCANDELA DIAGRAM

NAME: LED Strip	TYPE: Indoor lighting	WEIGHT: 75g
SPEC.: LED	DIM.: 1000*10*5MM	SERIAL No.: 20240709001
MFR.: EVERFINE	SUR.: 1000*10MM	Shielding Angle:



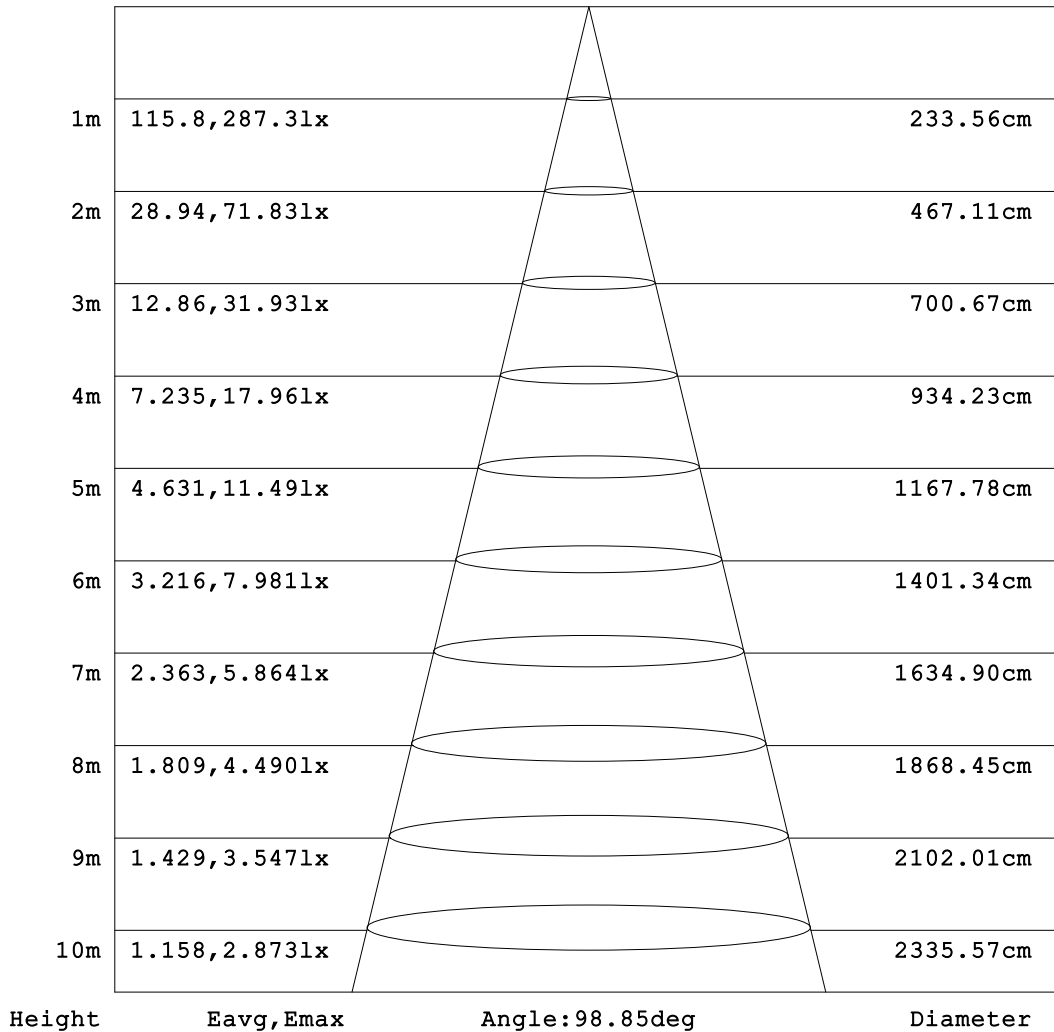
C Range: 0 - 360DEG
 C Interval: 15.0DEG
 Test Speed: HIGH
 Temperature:25.3°C
 Operators:DAMIN
 Test Date:2024-07-10

γ Range: 0 - 180DEG
 γ Interval: 1.0DEG
 Test System:EVERFINE GO-2000B_V1 SYSTEM V2.00.471
 Humidity:65.0%
 Test Distance:4.880m [K=1.0000]
 Remarks:

AAI Figure

NAME: LED Strip	TYPE: Indoor lighting	WEIGHT: 75g
SPEC.: LED	DIM.: 1000*10*5MM	SERIAL No.: 20240709001
MFR.: EVERFINE	SUR.: 1000*10MM	Shielding Angle:

Flux out:516.5 lm



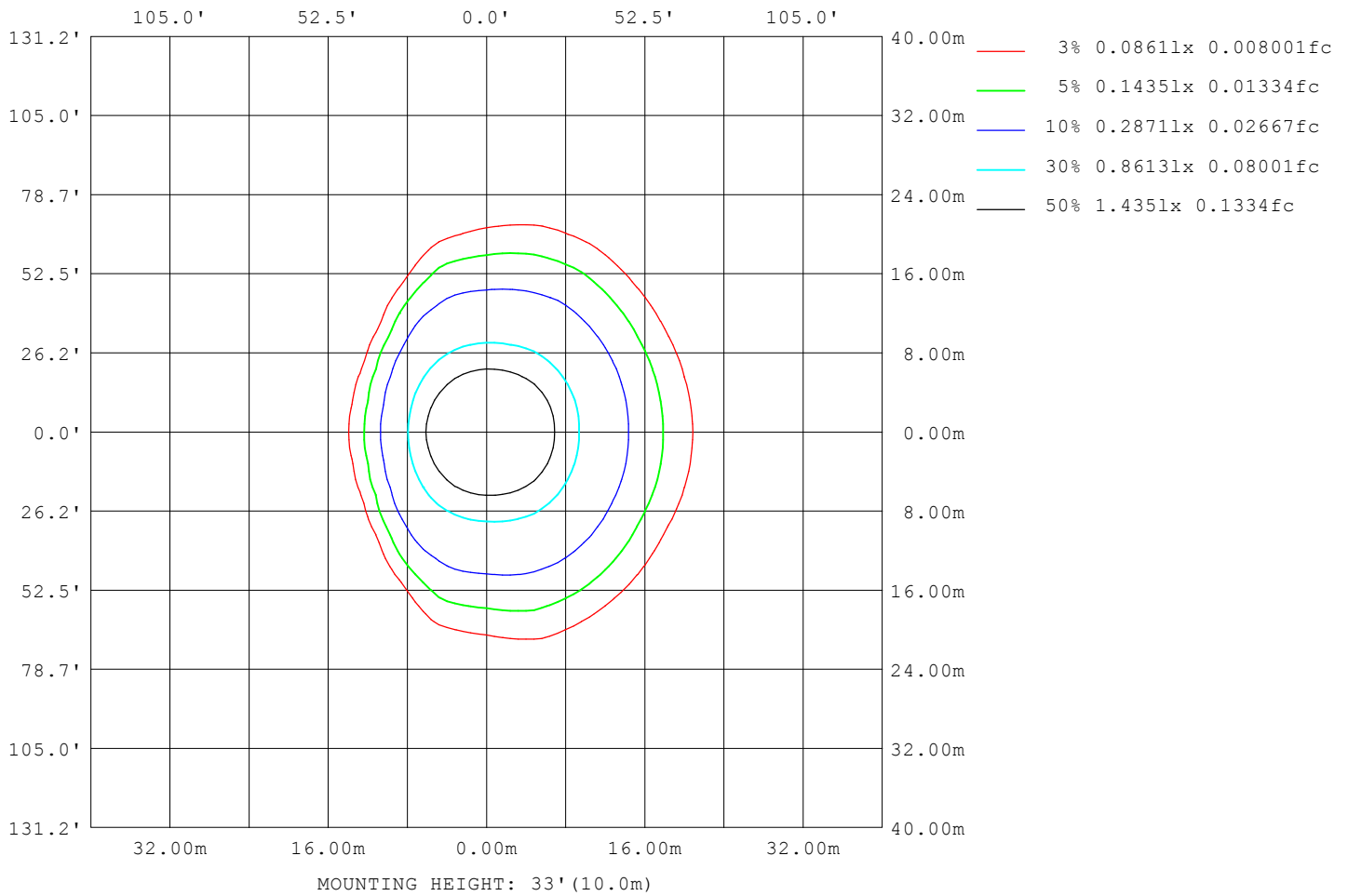
Note: The Curves indicate the illuminated area and the average illumination when the luminaire is at different distance.

C Range: 0 - 360DEG
 C Interval: 15.0DEG
 Test Speed: HIGH
 Temperature: 25.3°C
 Operators: DAMIN
 Test Date: 2024-07-10

γ Range: 0 - 180DEG
 γ Interval: 1.0DEG
 Test System: EVERFINE GO-2000B_V1 SYSTEM V2.00.471
 Humidity: 65.0%
 Test Distance: 4.880m [K=1.0000]
 Remarks:

ISOLUX DIAGRAM

NAME: LED Strip	TYPE: Indoor lighting	WEIGHT: 75g
SPEC.: LED	DIM.: 1000*10*5MM	SERIAL No.: 20240709001
MFR.: EVERFINE	SUR.: 1000*10MM	Shielding Angle:



C Range: 0 - 360DEG
 C Interval: 15.0DEG
 Test Speed: HIGH
 Temperature: 25.3°C
 Operators: DAMIN
 Test Date: 2024-07-10

γ Range: 0 - 180DEG
 γ Interval: 1.0DEG
 Test System: EVERFINE GO-2000B_V1 SYSTEM V2.00.471
 Humidity: 65.0%
 Test Distance: 4.880m [K=1.0000]
 Remarks:

LED Avg.L Report

NAME: LED Strip	TYPE: Indoor lighting	WEIGHT: 75g
SPEC.: LED	DIM.: 1000*10*5MM	SERIAL No.: 20240709001
MFR.: EVERFINE	SUR.: 1000*10MM	Shielding Angle:

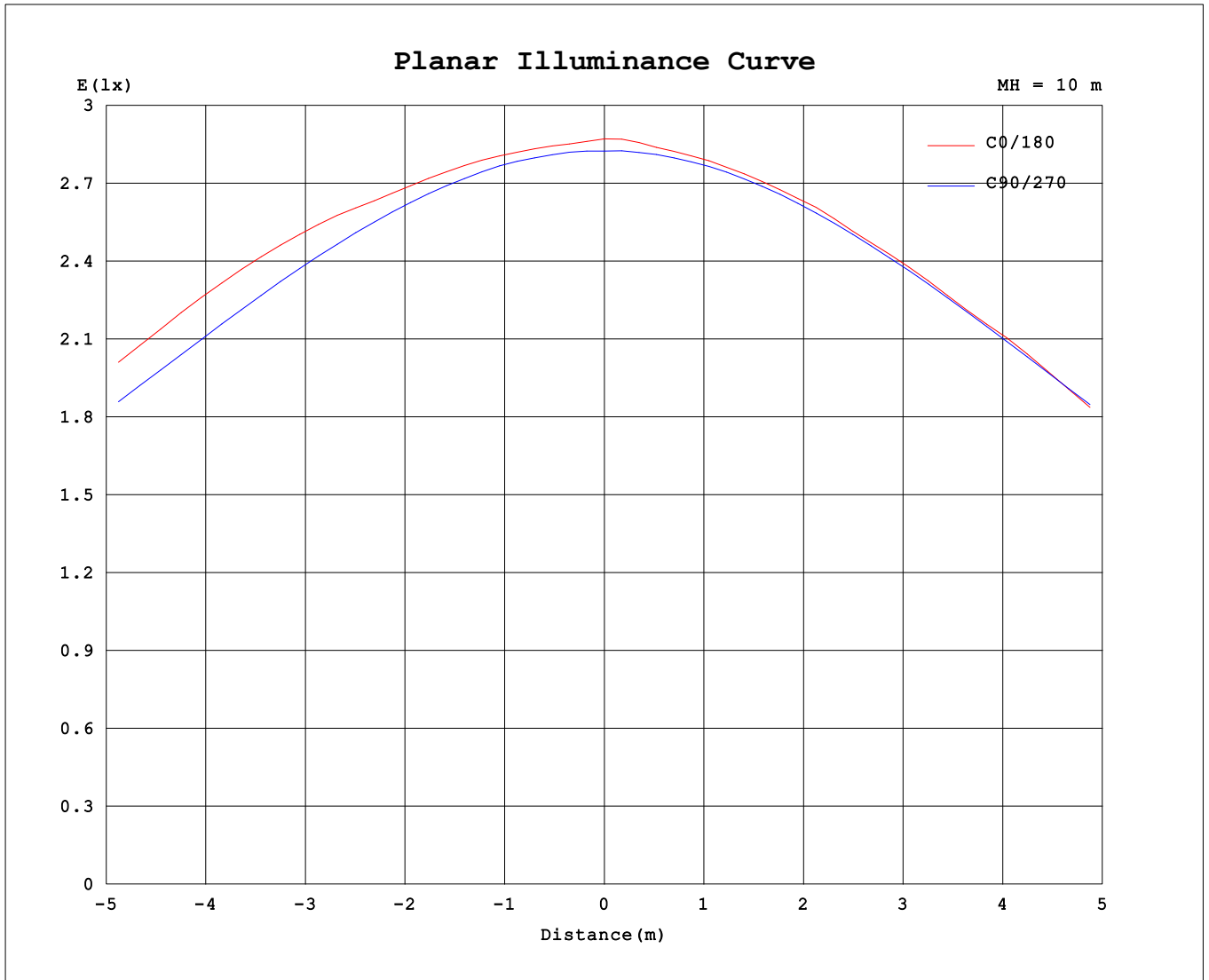
AvgL	cd/m2
L_0~180 (65) av	16857
L_0~180 (75) av	24192
L_0~180 (85) av	49963
L_90~270 (65) av	23139
L_90~270 (75) av	16984
L_90~270 (85) av	9747
L_45 (65) av	15606
L_45 (75) av	12690
L_45 (85) av	25178

Standard: GB/T 29293-2012

C Range: 0 - 360DEG
 C Interval: 15.0DEG
 Test Speed: HIGH
 Temperature:25.3°C
 Operators:DAMIN
 Test Date:2024-07-10

γ Range: 0 - 180DEG
 γ Interval: 1.0DEG
 Test System:EVERFINE GO-2000B_V1 SYSTEM V2.00.471
 Humidity:65.0%
 Test Distance:4.880m [K=1.0000]
 Remarks:

Planar Illuminance Curve



C Range: 0 - 360DEG
 C Interval: 15.0DEG
 Test Speed: HIGH
 Temperature: 25.3°C
 Operators: DAMIN
 Test Date: 2024-07-10

γ Range: 0 - 180DEG
 γ Interval: 1.0DEG
 Test System: EVERFINE GO-2000B_V1 SYSTEM V2.00.471
 Humidity: 65.0%
 Test Distance: 4.880m [K=1.0000]
 Remarks:

LUMINOUS DISTRIBUTION INTENSITY DATA

NAME: LED Strip	TYPE: Indoor lighting	WEIGHT: 75g
SPEC.: LED	DIM.: 1000*10*5MM	SERIAL No.: 20240709001
MFR.: EVERFINE	SUR.: 1000*10MM	Shielding Angle:

Table--1

UNIT: cd

C (DEG) \ γ (DEG)	0	15	30	45	60	75	90	105	120	135	150	165	180	195	210	225	240	255	270
0	287	287	285	284	283	283	282	282	283	284	285	287	287	287	285	284	283	283	282
5	285	288	285	284	283	282	282	281	281	281	282	284	284	285	283	282	281	281	281
10	285	287	285	283	281	280	279	277	277	278	279	280	280	281	278	277	278	278	278
15	286	286	283	280	277	275	274	272	272	272	273	275	274	275	273	272	272	272	273
20	286	282	281	276	272	269	267	265	265	265	266	267	266	267	266	265	264	264	266
25	279	276	278	272	266	261	258	256	255	256	255	254	256	255	254	255	254	255	257
30	269	270	271	266	258	251	247	245	245	243	239	237	239	237	238	240	243	243	245
35	254	257	258	257	249	240	234	232	231	225	217	210	210	210	216	221	228	229	232
40	235	237	241	243	238	226	219	216	213	202	182	166	163	165	181	197	209	214	217
45	212	214	220	224	223	211	200	198	190	168	133	113	109	112	131	161	187	196	199
50	184	188	193	200	203	192	179	176	160	119	80.7	66.0	63.1	65.1	80.1	112	156	174	179
55	154	158	161	172	178	170	154	150	118	68.9	45.5	40.6	41.7	41.0	44.1	63.9	112	149	155
60	126	129	129	139	147	145	126	120	70.6	36.5	32.1	34.1	35.5	33.4	31.9	34.4	65.5	118	128
65	104	103	99.1	106	113	118	96.8	85.6	35.9	25.4	26.2	32.4	38.1	33.5	28.0	24.9	32.3	78.3	98.8
70	82.7	82.7	74.7	73.5	80.7	88.1	68.7	48.7	22.2	19.2	24.8	47.3	59.0	49.6	27.3	19.9	20.5	39.5	70.2
75	53.0	54.6	53.7	46.4	48.6	58.6	43.6	23.0	15.6	17.8	36.2	65.2	72.3	67.6	39.3	20.2	16.1	19.4	44.3
80	37.7	35.7	34.3	29.7	27.3	31.6	23.1	11.4	11.7	22.4	47.2	62.7	65.1	63.9	50.6	25.5	12.5	10.7	22.9
85	36.1	33.2	24.9	18.9	15.9	14.2	8.40	5.91	10.5	23.4	41.8	48.0	51.0	48.9	45.7	26.6	12.2	6.34	8.59
90	44.9	39.7	26.9	14.7	8.86	5.59	1.47	3.66	9.25	19.0	30.9	33.7	35.7	34.2	32.1	21.3	10.6	4.43	1.94
95	61.5	54.9	37.0	19.3	8.37	3.84	1.12	3.26	9.12	17.1	22.1	21.4	21.7	22.3	23.0	18.1	10.2	3.93	1.02
100	55.3	57.5	52.0	30.4	13.0	4.30	1.13	3.26	9.12	13.9	13.0	8.89	8.58	8.74	12.4	14.8	10.3	4.12	1.05
105	17.5	19.6	24.9	28.9	14.4	4.64	1.19	2.17	8.28	10.6	6.73	6.02	6.26	6.19	6.42	10.2	9.34	3.24	1.20
110	8.48	8.36	8.30	10.8	12.3	4.29	1.34	1.59	6.78	6.10	5.81	5.70	6.00	5.93	5.71	5.80	7.19	2.30	1.38
115	8.20	7.87	7.06	6.43	5.90	2.42	1.47	1.58	3.39	5.49	5.84	5.91	6.25	6.15	5.81	5.53	4.07	1.82	1.56
120	8.10	7.81	7.23	6.20	4.03	2.10	1.62	1.73	2.51	4.77	5.99	6.22	6.58	6.45	6.00	5.15	3.01	1.86	1.74
125	6.78	6.55	5.86	4.60	3.23	2.02	1.78	1.89	2.21	3.55	5.29	6.18	6.73	6.47	5.53	4.01	2.47	1.99	1.90
130	6.62	6.34	5.12	4.26	2.56	1.89	1.95	2.05	2.20	2.87	4.08	5.08	5.90	5.45	4.37	3.21	2.39	2.15	2.06
135	6.01	5.75	4.60	3.31	2.35	1.99	2.12	2.23	2.32	2.63	3.29	3.99	4.70	4.32	3.50	2.84	2.42	2.31	2.22
140	4.88	4.50	3.48	2.80	2.24	2.14	2.30	2.41	2.48	2.58	2.91	3.32	3.89	3.58	3.04	2.71	2.53	2.48	2.38
145	3.80	3.54	3.01	2.53	2.24	2.32	2.48	2.59	2.64	2.66	2.77	2.99	3.37	3.19	2.85	2.73	2.68	2.65	2.56
150	3.18	3.03	2.66	2.43	2.39	2.52	2.68	2.79	2.80	2.81	2.83	2.89	3.15	3.01	2.86	2.85	2.83	2.81	2.73
155	2.77	2.72	2.56	2.50	2.60	2.72	2.86	2.95	2.98	2.97	2.96	2.96	3.21	3.03	2.99	2.99	2.98	2.96	2.89
160	2.72	2.67	2.67	2.71	2.80	2.90	3.02	3.09	3.12	3.13	3.10	3.10	3.34	3.13	3.13	3.12	3.11	3.09	3.04
165	2.90	2.88	2.89	2.93	2.99	3.07	3.15	3.21	3.24	3.25	3.27	3.24	3.34	3.22	3.26	3.25	3.23	3.20	3.16
170	3.11	3.10	3.11	3.13	3.16	3.21	3.26	3.31	3.34	3.36	3.37	3.39	3.35	3.31	3.37	3.35	3.33	3.30	3.27
175	3.30	3.30	3.32	3.29	3.30	3.33	3.35	3.38	3.40	3.42	3.45	3.47	3.40	3.39	3.44	3.39	3.38	3.37	3.35
180	3.43	3.42	3.44	3.40	3.40	3.40	3.40	3.41	3.42	3.43	3.44	3.47	3.43	3.42	3.44	3.39	3.40	3.40	3.41

C Range: 0 - 360DEG
 C Interval: 15.0DEG
 Test Speed: HIGH
 Temperature: 25.3°C
 Operators: DAMIN
 Test Date: 2024-07-10

γ Range: 0 - 180DEG
 γ Interval: 1.0DEG
 Test System: EVERFINE GO-2000B_V1 SYSTEM V2.00.471
 Humidity: 65.0%
 Test Distance: 4.880m [K=1.0000]
 Remarks:

LUMINOUS DISTRIBUTION INTENSITY DATA

NAME: LED Strip	TYPE: Indoor lighting	WEIGHT: 75g
SPEC.: LED	DIM.: 1000*10*5MM	SERIAL No.: 20240709001
MFR.: EVERFINE	SUR.: 1000*10MM	Shielding Angle:

Table--2

UNIT: cd

C (DEG) \ γ (DEG)	285	300	315	330	345														
0	282	283	284	285	287														
5	282	283	284	285	287														
10	279	280	282	284	286														
15	274	276	279	282	285														
20	267	270	275	280	284														
25	258	263	270	276	280														
30	248	254	263	269	271														
35	236	245	253	257	258														
40	222	233	239	241	239														
45	206	219	221	220	216														
50	188	202	199	194	188														
55	167	180	172	164	157														
60	143	152	141	132	128														
65	117	119	108	102	102														
70	87.6	85.8	75.4	75.6	80.7														
75	59.5	52.2	46.9	53.0	56.4														
80	33.5	28.8	30.8	36.6	35.3														
85	14.6	16.5	18.9	25.2	31.7														
90	4.79	8.48	13.6	23.6	37.0														
95	2.08	5.65	12.5	24.7	38.5														
100	3.03	7.69	22.5	39.1	52.5														
105	2.88	10.0	21.3	29.6	21.7														
110	2.30	10.7	12.4	8.78	7.92														
115	1.73	5.65	6.57	7.27	7.87														
120	1.88	3.56	5.92	7.31	7.26														
125	1.93	2.62	4.28	5.64	6.21														
130	1.96	2.17	3.72	4.90	6.01														
135	2.13	2.13	2.78	4.14	5.33														
140	2.30	2.19	2.47	3.11	4.12														
145	2.46	2.29	2.41	2.69	3.12														
150	2.64	2.48	2.45	2.57	2.74														
155	2.79	2.67	2.58	2.59	2.66														
160	2.96	2.86	2.79	2.75	2.74														
165	3.11	3.04	2.99	2.96	2.96														
170	3.24	3.20	3.17	3.16	3.18														
175	3.34	3.33	3.32	3.32	3.35														
180	3.41	3.42	3.43	3.44	3.47														

C Range: 0 - 360DEG
 C Interval: 15.0DEG
 Test Speed: HIGH
 Temperature:25.3°C
 Operators:DAMIN
 Test Date:2024-07-10

γ Range: 0 - 180DEG
 γ Interval: 1.0DEG
 Test System:EVERFINE GO-2000B_V1 SYSTEM V2.00.471
 Humidity:65.0%
 Test Distance:4.880m [K=1.0000]
 Remarks: