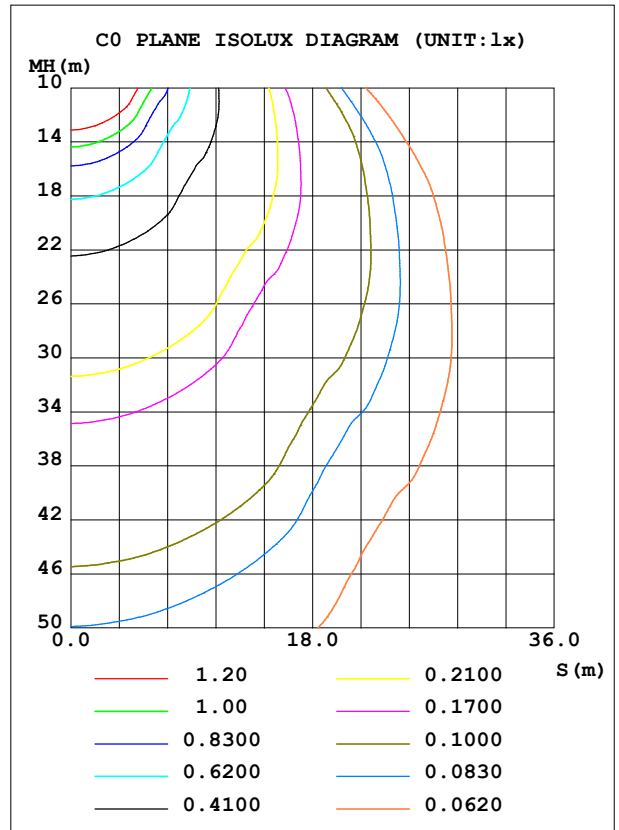
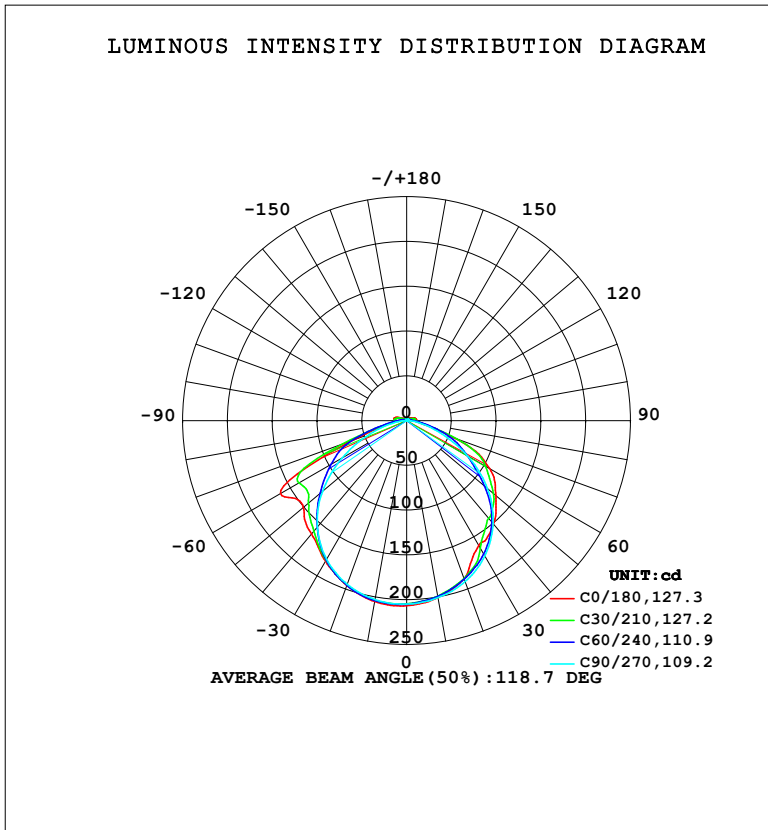


LUMINAIRE PHOTOMETRIC TEST REPORT

NAME: LED Strip	TYPE: Indoor lighting	WEIGHT: 75g
SPEC.: LED	DIM.: 1000*10*5MM	SERIAL No.: 20240709001
MFR.: EVERFINE	SUR.: 1000*10MM	Shielding Angle:

DATA OF LAMP		PHOTOMETRIC DATA			
HM0DET2X8E-XX-EU-HR-HQ1-WP-EP		Imax (cd)	208.5	S/MH (C0/180)	1.31
NOMINAL POWER (W)	6.58759	LOR (%)	100.0	S/MH (C90/270)	1.29
RATED VOLTAGE (V)	AC 230V	TOTAL FLUX (lm)	632.71	η UP, DN (C0-180)	2.0, 46.6
NOMINAL FLUX (lm)	632.712	CIE CLASS	DIRECT	η UP, DN (C180-360)	2.3, 49.1
LAMPS INSIDE	1	η up (%)	4.3	CIBSE SHR NOM	1.25
TEST VOLTAGE (V)	AC 230V	η down (%)	95.7	CIBSE SHR MAX	1.35



C Range: 0 - 360DEG
 C Interval: 15.0DEG
 Test Speed: HIGH
 Temperature: 25.3°C
 Operators: DAMIN
 Test Date: 2024-07-10

γ Range: 0 - 180DEG
 γ Interval: 1.0DEG
 Test System: EVERFINE GO-2000B_V1 SYSTEM V2.00.471
 Humidity: 65.0%
 Test Distance: 4.880m [K=1.0000]
 Remarks:

ZONAL FLUX DIAGRAM

ZONAL FLUX DIAGRAM:

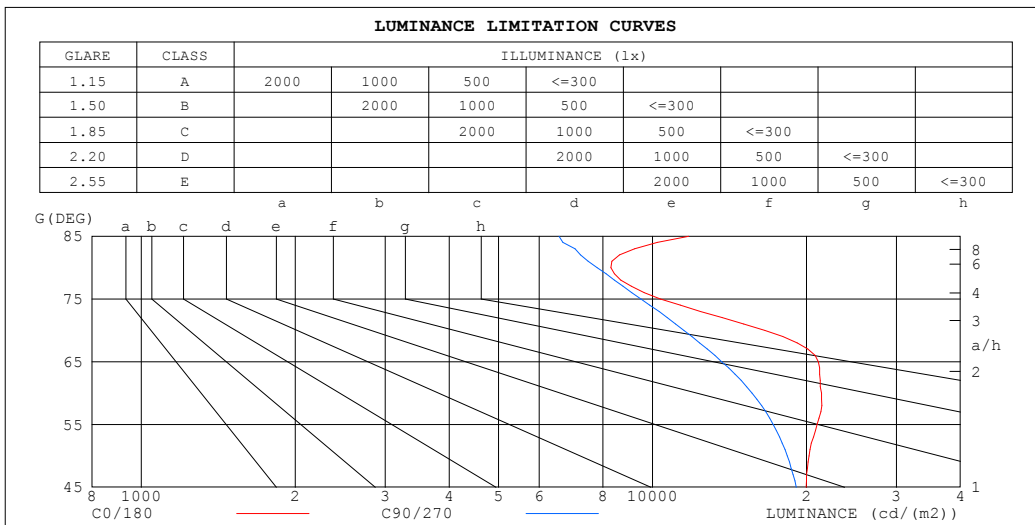
γ	C0	C45	C90	C135	C180	C225	C270	C315	γ	Φ zone	Φ total	%lum,lamp
10	200.7	199.0	200.8	200.6	205.1	203.6	202.9	201.5	0- 10	19.44	19.44	3.07,3.07
20	187.9	187.8	191.1	190.3	195.8	195.3	194.3	190.7	10- 20	55.78	75.22	11.9,11.9
30	161.1	170.9	174.7	173.3	181.4	179.2	178.8	174.4	20- 30	84.70	159.9	25.3,25.3
40	150.9	140.8	150.2	150.9	165.4	157.7	155.3	150.8	30- 40	102.6	262.6	41.5,41.5
50	130.1	115.5	117.9	127.5	150.9	134.6	122.5	121.0	40- 50	108.7	371.3	58.7,58.7
60	107.0	93.13	78.29	102.5	162.8	114.7	82.93	94.39	50- 60	102.8	474.1	74.9,74.9
70	56.70	58.57	39.41	62.46	62.42	75.79	43.33	63.27	60- 70	82.79	556.9	88,88
80	14.39	19.63	13.53	18.73	19.84	23.71	14.82	22.51	70- 80	35.85	592.7	93.7,93.7
90	9.607	9.525	1.367	10.65	11.75	14.01	1.921	9.724	80- 90	12.92	605.6	95.7,95.7
100	10.11	7.344	0.7762	6.893	14.46	9.395	1.063	7.378	90-100	8.665	614.3	97.1,97.1
110	8.972	5.468	0.9705	4.060	11.51	5.905	1.121	5.582	100-110	6.888	621.2	98.2,98.2
120	5.497	3.390	1.222	2.056	5.483	3.119	1.556	3.554	110-120	4.129	625.3	98.8,98.8
130	4.413	2.676	1.470	1.548	3.126	1.938	1.856	2.376	120-130	2.484	627.8	99.2,99.2
140	3.218	2.045	1.706	1.707	1.976	1.783	2.074	2.195	130-140	1.715	629.5	99.5,99.5
150	2.522	2.012	2.043	1.972	1.992	1.964	2.160	2.298	140-150	1.289	630.8	99.7,99.7
160	2.511	2.324	2.306	2.175	2.154	2.149	2.218	2.312	150-160	1.006	631.8	99.9,99.9
170	2.381	2.528	2.444	2.339	2.274	2.290	2.347	2.411	160-170	0.6577	632.5	100,100
180	2.419	2.401	2.446	2.443	2.420	2.410	2.443	2.449	170-180	0.2313	632.7	100,100
DEG	LUMINOUS INTENSITY:cd									UNIT:lm		

C Range: 0 - 360DEG
 C Interval: 15.0DEG
 Test Speed: HIGH
 Temperature:25.3°C
 Operators:DAMIN
 Test Date:2024-07-10

γ Range: 0 - 180DEG
 γ Interval: 1.0DEG
 Test System:EVERFINE GO-2000B_V1 SYSTEM V2.00.471
 Humidity:65.0%
 Test Distance:4.880m [K=1.0000]
 Remarks:

LUMINANCE LIMITATION CURVES

NAME: LED Strip	TYPE: Indoor lighting	WEIGHT: 75g
SPEC.: LED	DIM.: 1000*10*5MM	SERIAL No.: 20240709001
MFR.: EVERFINE	SUR.: 1000*10MM	Shielding Angle:



LUMINANCE cd/ (m2)		
G (DEG)	C0/180	C90/270
85	11775	6562
80	8288	7794
75	10360	9486
70	16578	11522
65	21117	13656
60	21405	15659
55	20985	17228
50	20237	18342
45	19982	19106

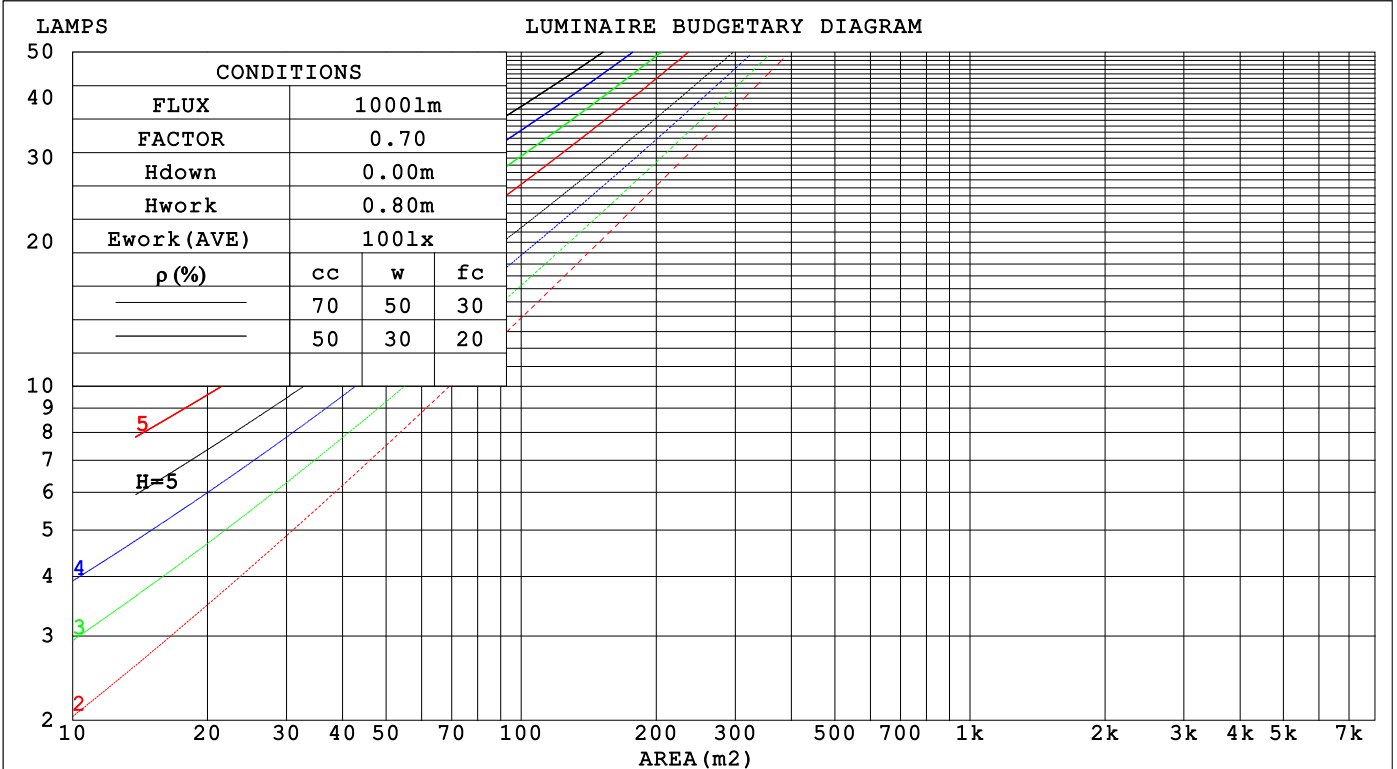
C Range: 0 - 360DEG
 C Interval: 15.0DEG
 Test Speed: HIGH
 Temperature: 25.3°C
 Operators: DAMIN
 Test Date: 2024-07-10

γ Range: 0 - 180DEG
 γ Interval: 1.0DEG
 Test System: EVERFINE GO-2000B_V1 SYSTEM V2.00.471
 Humidity: 65.0%
 Test Distance: 4.880m [K=1.0000]
 Remarks:

CU AND LUMINAIRE BUDGETARY ESTIMATE DIAGRAM

NAME: LED Strip	TYPE: Indoor lighting	WEIGHT: 75g
SPEC.: LED	DIM.: 1000*10*5MM	SERIAL No.: 20240709001
MFR.: EVERFINE	SUR.: 1000*10MM	Shielding Angle:

ρcc	80%			70%			50%			30%			10%			0
ρw	50%	30%	10%	50%	30%	10%	50%	30%	10%	50%	30%	10%	50%	30%	10%	0
ρfc	20%			20%			20%			20%			20%			0
RCR	RCR:Room Cavity Ratio															
	Coefficients of Utilization(CU)															
0.0	1.18	1.18	1.18	1.15	1.15	1.15	1.09	1.09	1.09	1.03	1.03	1.03	.98	.98	.98	.96
1.0	1.03	.99	.95	1.00	.96	.93	.95	.92	.89	.91	.88	.86	.86	.84	.82	.80
2.0	.90	.83	.77	.87	.81	.76	.83	.78	.73	.79	.75	.71	.75	.72	.69	.66
3.0	.78	.70	.64	.76	.69	.63	.73	.66	.61	.70	.64	.60	.66	.62	.58	.56
4.0	.69	.60	.54	.68	.59	.53	.65	.57	.52	.62	.56	.51	.59	.54	.50	.47
5.0	.62	.53	.46	.60	.52	.46	.58	.50	.45	.55	.49	.44	.53	.47	.43	.41
6.0	.55	.46	.40	.54	.46	.40	.52	.45	.39	.50	.43	.38	.48	.42	.38	.35
7.0	.50	.41	.35	.49	.41	.35	.47	.40	.34	.45	.39	.34	.44	.38	.33	.31
8.0	.46	.37	.31	.45	.37	.31	.43	.36	.31	.42	.35	.30	.40	.34	.30	.28
9.0	.42	.34	.28	.41	.33	.28	.40	.32	.27	.38	.32	.27	.37	.31	.27	.25
10.0	.39	.31	.25	.38	.30	.25	.37	.30	.25	.35	.29	.25	.34	.28	.24	.22



C Range: 0 - 360DEG
 C Interval: 15.0DEG
 Test Speed: HIGH
 Temperature: 25.3°C
 Operators: DAMIN
 Test Date: 2024-07-10

γ Range: 0 - 180DEG
 γ Interval: 1.0DEG
 Test System: EVERFINE GO-2000B_V1 SYSTEM V2.00.471
 Humidity: 65.0%
 Test Distance: 4.880m [K=1.0000]
 Remarks:

WEC AND CCEC

NAME: LED Strip	TYPE: Indoor lighting	WEIGHT: 75g
SPEC.: LED	DIM.: 1000*10*5MM	SERIAL No.: 20240709001
MFR.: EVERFINE	SUR.: 1000*10MM	Shielding Angle:

ρ_{cc}	80%			70%			50%			30%			10%			0
ρ_w	50%	30%	10%	50%	30%	10%	50%	30%	10%	50%	30%	10%	50%	30%	10%	0
ρ_{fc}	20%			20%			20%			20%			20%			0
RCR	RCR:Room Cavity Ratio						Wall Exitance Coefficients(WEC)									
0.0																
1.0	.309	.176	.056	.301	.172	.054	.285	.164	.052	.271	.156	.050	.257	.149	.048	
2.0	.291	.159	.049	.283	.156	.048	.269	.150	.047	.257	.144	.045	.245	.138	.044	
3.0	.269	.143	.043	.263	.141	.042	.250	.136	.041	.239	.131	.040	.228	.126	.039	
4.0	.249	.129	.038	.243	.127	.038	.232	.123	.037	.222	.119	.036	.212	.115	.035	
5.0	.230	.117	.034	.225	.116	.034	.215	.112	.033	.206	.109	.032	.197	.105	.032	
6.0	.214	.107	.031	.209	.106	.030	.200	.102	.030	.192	.100	.029	.184	.097	.029	
7.0	.199	.098	.028	.195	.097	.028	.186	.094	.027	.179	.092	.027	.172	.089	.026	
8.0	.186	.091	.025	.182	.089	.025	.174	.087	.025	.168	.085	.024	.161	.083	.024	
9.0	.174	.084	.023	.170	.083	.023	.164	.081	.023	.158	.079	.023	.152	.077	.022	
10.0	.163	.078	.022	.160	.077	.022	.154	.076	.021	.149	.074	.021	.143	.072	.021	

ρ_{cc}	80%			70%			50%			30%			10%			0
ρ_w	50%	30%	10%	50%	30%	10%	50%	30%	10%	50%	30%	10%	50%	30%	10%	0
ρ_{fc}	20%			20%			20%			20%			20%			0
RCR	RCR:Room Cavity Ratio						Ceiling Cavity Exitance Coefficients(CCEC)									
0.0	.223	.223	.223	.191	.191	.191	.130	.130	.130	.075	.075	.075	.024	.024	.024	
1.0	.213	.189	.167	.182	.162	.144	.125	.112	.100	.072	.065	.058	.023	.021	.019	
2.0	.205	.165	.131	.176	.142	.113	.120	.098	.079	.069	.057	.046	.022	.018	.015	
3.0	.198	.148	.108	.169	.127	.093	.116	.088	.065	.067	.052	.039	.022	.017	.013	
4.0	.190	.134	.092	.163	.116	.080	.112	.081	.056	.065	.047	.033	.021	.015	.011	
5.0	.183	.124	.081	.157	.107	.070	.108	.075	.050	.063	.044	.029	.020	.014	.010	
6.0	.176	.116	.073	.151	.100	.063	.104	.070	.045	.060	.041	.027	.020	.014	.009	
7.0	.169	.109	.067	.145	.094	.058	.100	.066	.041	.058	.039	.025	.019	.013	.008	
8.0	.163	.103	.062	.140	.090	.054	.097	.063	.039	.056	.037	.023	.018	.012	.008	
9.0	.157	.098	.059	.135	.085	.052	.093	.060	.037	.054	.035	.022	.018	.012	.007	
10.0	.151	.094	.056	.130	.082	.049	.090	.058	.035	.053	.034	.021	.017	.011	.007	

C Range: 0 - 360DEG
 C Interval: 15.0DEG
 Test Speed: HIGH
 Temperature:25.3°C
 Operators:DAMIN
 Test Date:2024-07-10

γ Range: 0 - 180DEG
 γ Interval: 1.0DEG
 Test System:EVERFINE GO-2000B_V1 SYSTEM V2.00.471
 Humidity:65.0%
 Test Distance:4.880m [K=1.0000]
 Remarks:

UGR(Unified Glare Rating) Table

NAME: LED Strip		TYPE: Indoor lighting					WEIGHT: 75g					
SPEC.: LED		DIM.: 1000*10*5MM					SERIAL No.: 20240709001					
MFR.: EVERFINE		SUR.: 1000*10MM					Shielding Angle:					
ceiling/cavity		0.7	0.7	0.5	0.5	0.3	0.7	0.7	0.5	0.5	0.3	
walls		0.5	0.3	0.5	0.3	0.3	0.5	0.3	0.5	0.3	0.3	
working plane		0.2	0.2	0.2	0.2	0.2	0.2	0.2	0.2	0.2	0.2	
Room dimensions		Viewed crosswise					Viewed endwise					
x = 2H y = 2H		25.0	26.5	25.3	26.7	27.0	23.6	25.1	23.9	25.3	25.6	
	3H	26.5	27.9	26.9	28.2	28.5	24.7	26.0	25.0	26.3	26.6	
	4H	26.7	28.0	27.1	28.4	28.7	25.0	26.3	25.3	26.6	26.9	
	6H	26.8	28.0	27.2	28.4	28.8	25.2	26.4	25.6	26.7	27.1	
	8H	26.9	28.0	27.3	28.4	28.8	25.2	26.4	25.6	26.7	27.1	
	12H	26.9	28.0	27.3	28.4	28.8	25.2	26.3	25.6	26.7	27.1	
	4H	2H	25.5	26.8	25.9	27.1	27.5	24.4	25.7	24.8	26.0	26.4
		3H	27.1	28.3	27.6	28.6	29.0	25.7	26.8	26.1	27.2	27.5
		4H	27.5	28.5	27.9	28.9	29.3	26.1	27.1	26.5	27.5	27.9
		6H	27.6	28.5	28.1	29.0	29.4	26.3	27.2	26.8	27.7	28.1
		8H	27.7	28.5	28.2	29.0	29.5	26.4	27.3	26.9	27.7	28.2
		12H	27.8	28.6	28.3	29.0	29.5	26.5	27.3	27.0	27.7	28.2
	8H	4H	27.6	28.4	28.1	28.9	29.4	26.4	27.2	26.8	27.7	28.1
		6H	27.9	28.6	28.4	29.1	29.6	26.8	27.5	27.3	28.0	28.5
		8H	28.0	28.6	28.5	29.1	29.7	27.0	27.6	27.5	28.1	28.6
		12H	28.2	28.7	28.7	29.2	29.8	27.1	27.7	27.7	28.2	28.7
	12H	4H	27.6	28.4	28.1	28.8	29.3	26.4	27.1	26.9	27.6	28.1
		6H	27.9	28.5	28.4	29.0	29.6	26.8	27.5	27.4	28.0	28.5
		8H	28.1	28.6	28.6	29.1	29.7	27.1	27.6	27.6	28.1	28.7
Variations with the observer position at spacings(CIE Pub.117):												
S = 1.0H		+ 0.2 / - 0.2					+ 0.2 / - 0.3					
	1.5H	+ 0.1 / - 0.3					+ 0.2 / - 0.3					
	2.0H	+ 0.4 / - 0.6					+ 0.4 / - 0.4					

CIE Pub.117, 632.7 lm Total Lamp Luminous Flux Correct (8log(F/F0) = -1.6)
 Area: 0.01 m2

C Range: 0 - 360DEG
 C Interval: 15.0DEG
 Test Speed: HIGH
 Temperature:25.3°C
 Operators:DAMIN
 Test Date:2024-07-10

γ Range: 0 - 180DEG
 γ Interval: 1.0DEG
 Test System:EVERFINE GO-2000B_V1 SYSTEM V2.00.471
 Humidity:65.0%
 Test Distance:4.880m [K=1.0000]
 Remarks:

UTILIZATION FACTORS TABLE

NAME: LED Strip	TYPE: Indoor lighting	WEIGHT: 75g
SPEC.: LED	DIM.: 1000*10*5MM	SERIAL No.: 20240709001
MFR.: EVERFINE	SUR.: 1000*10MM	Shielding Angle:

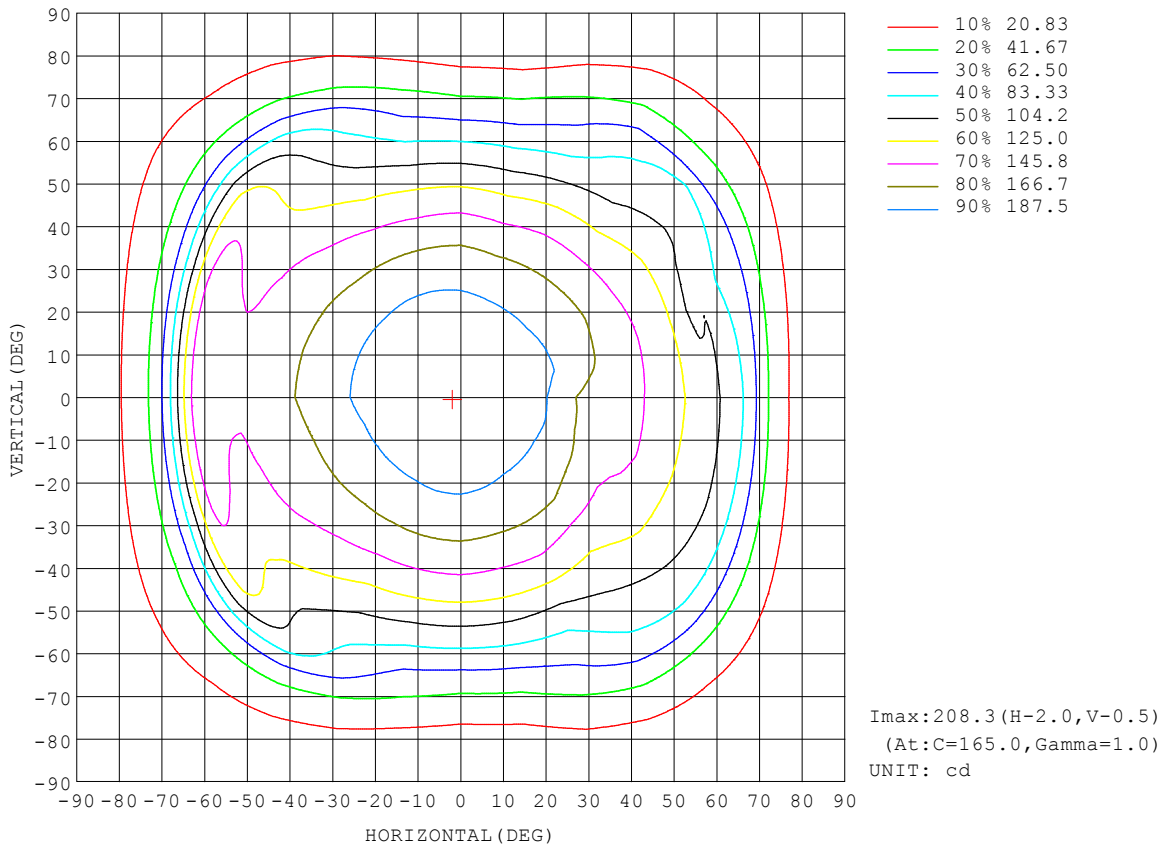
REFLECTANCE										
Ceiling	0.8	0.8	0.8	0.7	0.7	0.7	0.5	0.5	0.5	0
Walls	0.7	0.5	0.3	0.7	0.5	0.3	0.7	0.5	0.3	0
Working plane	0.2	0.2	0.2	0.2	0.2	0.2	0.2	0.2	0.2	0
ROOM INDEX	UTILIZATION FACTORS (PERCENT) $k(RI) \times RCR = 5$									
$k = 0.60$	55	44	37	55	43	37	53	43	36	30
0.80	65	54	46	64	53	46	62	52	45	38
1.00	74	63	55	73	62	55	70	63	54	47
1.25	81	70	63	79	69	62	76	68	61	54
1.50	86	76	69	84	75	68	81	73	67	59
2.00	93	84	78	91	83	77	87	80	75	66
2.50	97	89	83	95	88	82	91	84	80	70
3.00	101	94	88	98	92	87	94	88	84	74
4.00	105	99	94	102	97	92	97	93	89	79
5.00	107	102	98	105	100	96	99	96	93	82
ROOM INDEX	UF(total)									Direct
According to DIN EN 13032-2 2004			Suspended				SHRNOM = 1.25			

C Range: 0 - 360DEG
 C Interval: 15.0DEG
 Test Speed: HIGH
 Temperature: 25.3°C
 Operators: DAMIN
 Test Date: 2024-07-10

γ Range: 0 - 180DEG
 γ Interval: 1.0DEG
 Test System: EVERFINE GO-2000B_V1 SYSTEM V2.00.471
 Humidity: 65.0%
 Test Distance: 4.880m [K=1.0000]
 Remarks:

ISOCANDELA DIAGRAM

NAME: LED Strip	TYPE: Indoor lighting	WEIGHT: 75g
SPEC.: LED	DIM.: 1000*10*5MM	SERIAL No.: 20240709001
MFR.: EVERFINE	SUR.: 1000*10MM	Shielding Angle:

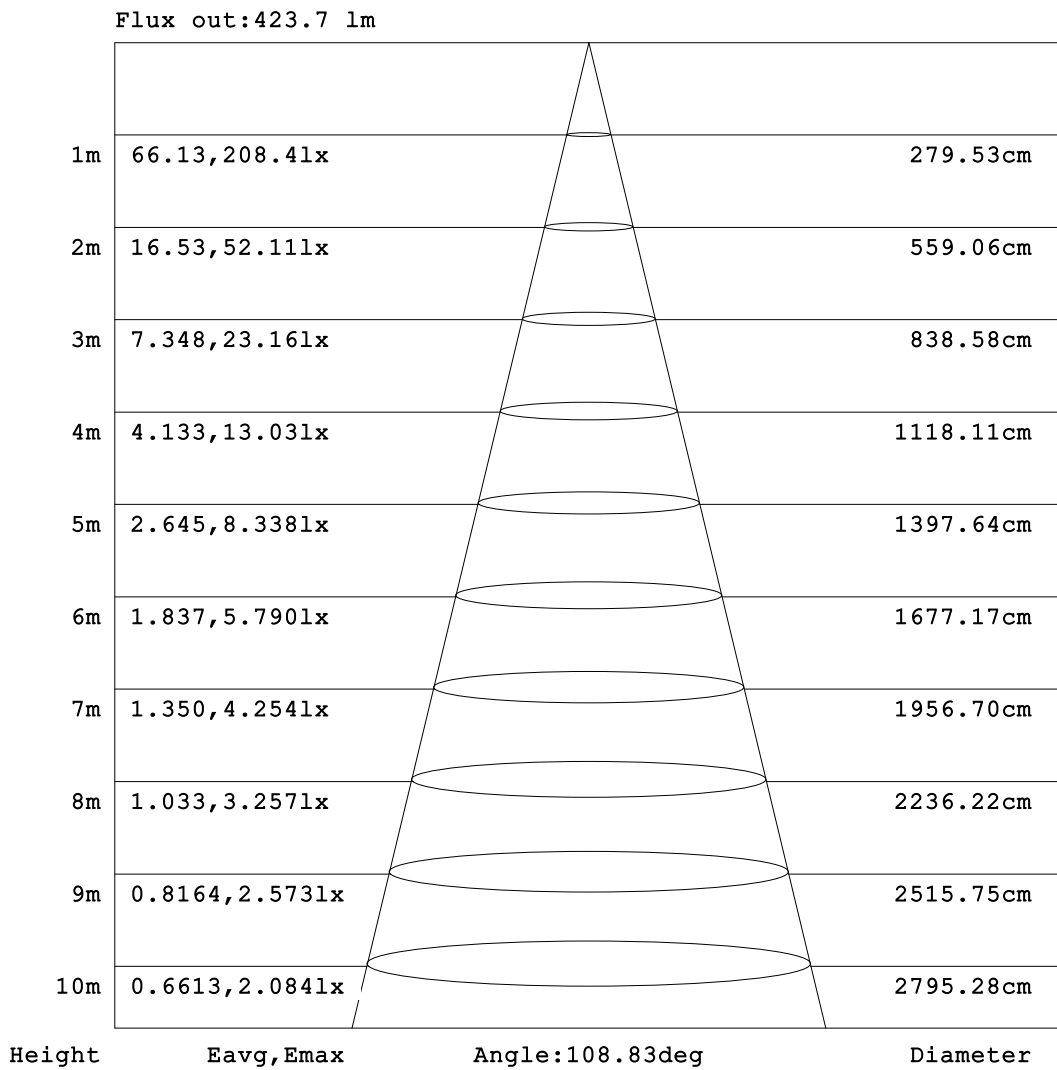


C Range: 0 - 360DEG
 C Interval: 15.0DEG
 Test Speed: HIGH
 Temperature: 25.3°C
 Operators: DAMIN
 Test Date: 2024-07-10

γ Range: 0 - 180DEG
 γ Interval: 1.0DEG
 Test System: EVERFINE GO-2000B_V1 SYSTEM V2.00.471
 Humidity: 65.0%
 Test Distance: 4.880m [K=1.0000]
 Remarks:

AAI Figure

NAME: LED Strip	TYPE: Indoor lighting	WEIGHT: 75g
SPEC.: LED	DIM.: 1000*10*5MM	SERIAL No.: 20240709001
MFR.: EVERFINE	SUR.: 1000*10MM	Shielding Angle:



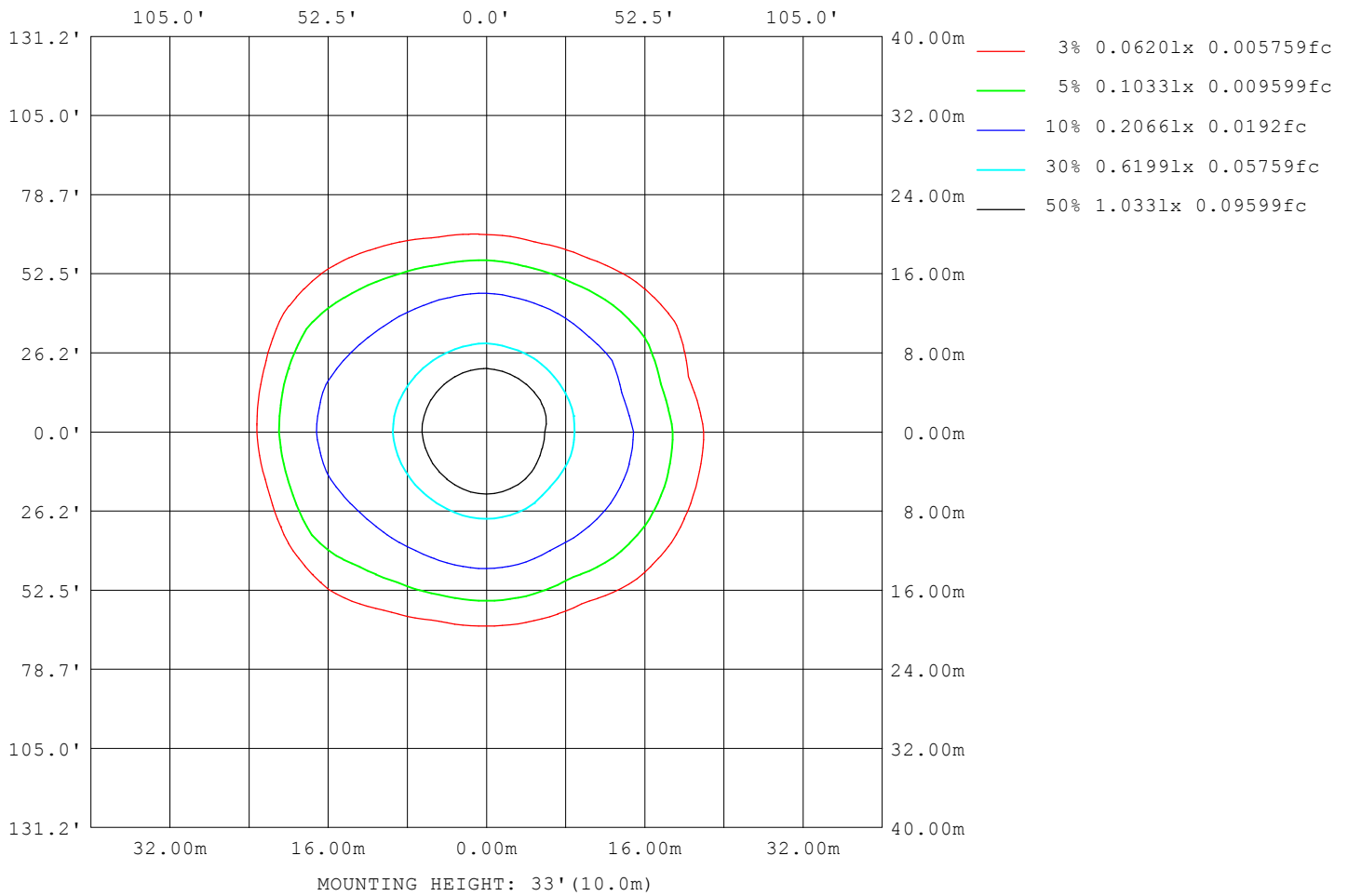
Note: The Curves indicate the illuminated area and the average illumination when the luminaire is at different distance.

C Range: 0 - 360DEG
 C Interval: 15.0DEG
 Test Speed: HIGH
 Temperature: 25.3°C
 Operators: DAMIN
 Test Date: 2024-07-10

γ Range: 0 - 180DEG
 γ Interval: 1.0DEG
 Test System: EVERFINE GO-2000B_V1 SYSTEM V2.00.471
 Humidity: 65.0%
 Test Distance: 4.880m [K=1.0000]
 Remarks:

ISOLUX DIAGRAM

NAME: LED Strip	TYPE: Indoor lighting	WEIGHT: 75g
SPEC.: LED	DIM.: 1000*10*5MM	SERIAL No.: 20240709001
MFR.: EVERFINE	SUR.: 1000*10MM	Shielding Angle:



C Range: 0 - 360DEG
 C Interval: 15.0DEG
 Test Speed: HIGH
 Temperature: 25.3°C
 Operators: DAMIN
 Test Date: 2024-07-10

γ Range: 0 - 180DEG
 γ Interval: 1.0DEG
 Test System: EVERFINE GO-2000B_V1 SYSTEM V2.00.471
 Humidity: 65.0%
 Test Distance: 4.880m [K=1.0000]
 Remarks:

LED Avg.L Report

NAME: LED Strip	TYPE: Indoor lighting	WEIGHT: 75g
SPEC.: LED	DIM.: 1000*10*5MM	SERIAL No.: 20240709001
MFR.: EVERFINE	SUR.: 1000*10MM	Shielding Angle:

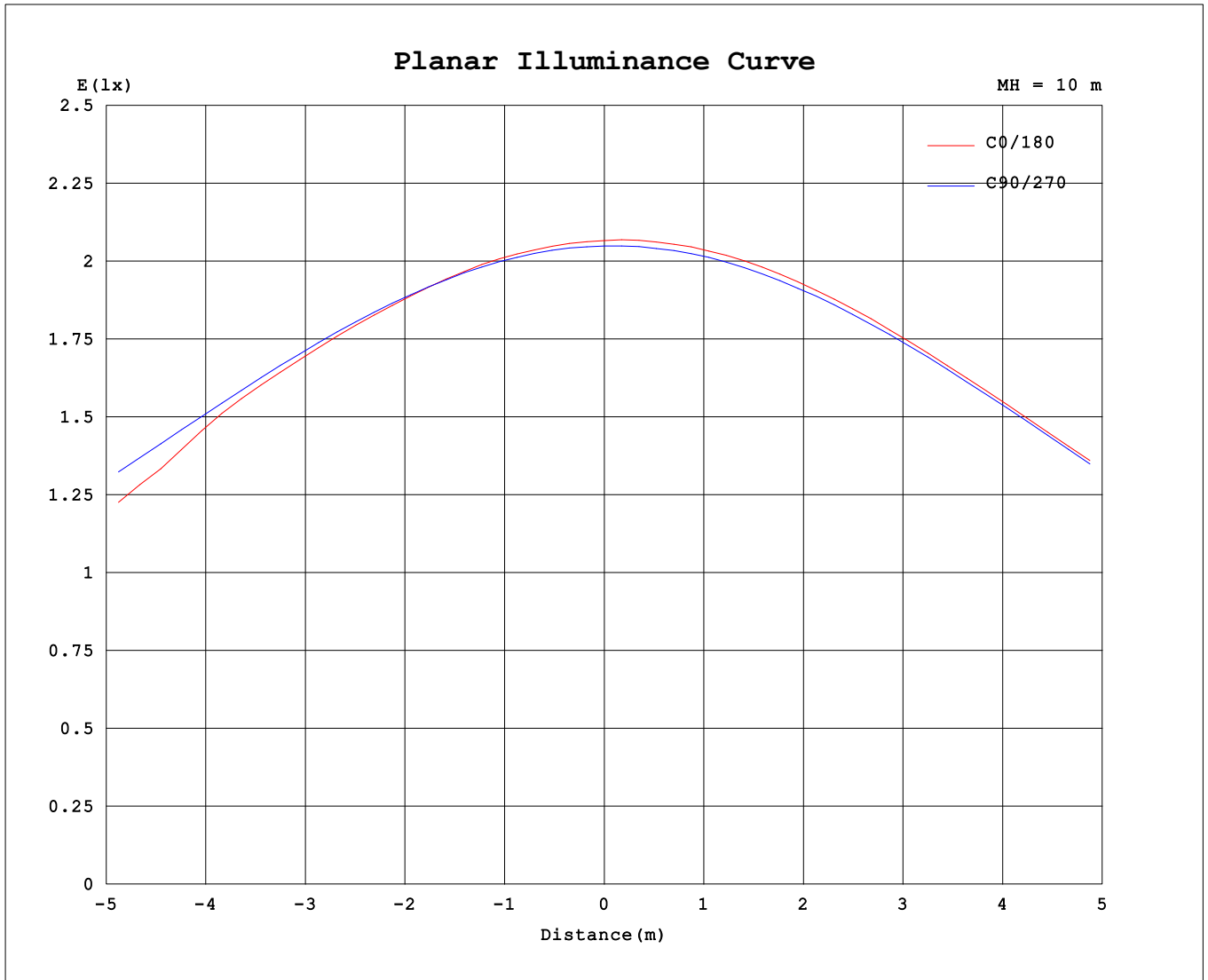
AvgL	cd/m2
L_0~180 (65) av	25069
L_0~180 (75) av	11712
L_0~180 (85) av	13327
L_90~270 (65) av	14197
L_90~270 (75) av	10014
L_90~270 (85) av	6835
L_45 (65) av	21484
L_45 (75) av	14585
L_45 (85) av	14764

Standard: GB/T 29293-2012

C Range: 0 - 360DEG
 C Interval: 15.0DEG
 Test Speed: HIGH
 Temperature:25.3°C
 Operators:DAMIN
 Test Date:2024-07-10

γ Range: 0 - 180DEG
 γ Interval: 1.0DEG
 Test System:EVERFINE GO-2000B_V1 SYSTEM V2.00.471
 Humidity:65.0%
 Test Distance:4.880m [K=1.0000]
 Remarks:

Planar Illuminance Curve



C Range: 0 - 360DEG
 C Interval: 15.0DEG
 Test Speed: HIGH
 Temperature: 25.3°C
 Operators: DAMIN
 Test Date: 2024-07-10

γ Range: 0 - 180DEG
 γ Interval: 1.0DEG
 Test System: EVERFINE GO-2000B_V1 SYSTEM V2.00.471
 Humidity: 65.0%
 Test Distance: 4.880m [K=1.0000]
 Remarks:

LUMINOUS DISTRIBUTION INTENSITY DATA

NAME: LED Strip	TYPE: Indoor lighting	WEIGHT: 75g
SPEC.: LED	DIM.: 1000*10*5MM	SERIAL No.: 20240709001
MFR.: EVERFINE	SUR.: 1000*10MM	Shielding Angle:

Table--1

UNIT: cd

C (DEG) \ γ (DEG)	0	15	30	45	60	75	90	105	120	135	150	165	180	195	210	225	240	255	270
0	207	206	205	204	205	205	205	204	204	204	207	208	207	206	205	204	205	205	205
5	205	204	202	202	202	204	204	203	203	203	206	208	207	206	205	205	205	205	205
10	201	200	199	199	199	200	201	200	200	201	203	205	205	205	204	204	204	203	203
15	195	195	194	194	194	196	197	196	196	196	198	200	201	201	200	200	201	200	199
20	188	188	187	188	188	190	191	191	190	190	191	193	196	195	195	195	196	195	194
25	172	175	179	180	181	182	184	184	183	183	183	185	189	189	189	188	189	188	188
30	161	162	165	171	172	173	175	174	173	173	174	177	181	181	180	179	180	179	179
35	158	156	151	158	161	162	163	163	162	162	165	168	172	172	171	169	169	168	168
40	151	150	142	141	148	148	150	150	148	151	156	160	165	164	161	158	155	155	155
45	141	142	136	127	132	134	135	134	133	140	147	154	160	158	153	147	141	140	140
50	130	130	127	115	114	117	118	117	118	128	136	145	151	149	143	135	126	123	122
55	120	119	113	104	94.1	97.8	98.8	98.7	102	114	128	141	152	149	136	123	111	105	103
60	107	107	102	93.1	78.3	78.5	78.3	79.1	87.3	102	132	152	163	159	139	115	97.3	86.0	82.9
65	89.2	88.0	87.3	79.2	64.4	59.1	57.7	60.5	74.2	97.7	114	113	123	125	127	105	83.6	67.7	62.3
70	56.7	58.0	59.9	58.6	49.2	40.6	39.4	44.0	56.0	62.5	59.8	56.2	62.4	65.7	75.8	75.8	65.1	50.6	43.3
75	26.8	29.9	30.7	35.9	32.7	25.6	24.6	28.2	32.9	33.8	30.8	30.6	33.8	35.4	38.5	42.4	40.7	33.4	27.3
80	14.4	15.8	17.4	19.6	19.4	14.9	13.5	16.5	18.9	18.7	16.7	18.0	19.8	21.2	21.1	23.7	23.9	19.5	14.8
85	10.3	10.1	11.9	11.8	11.3	8.37	5.72	8.25	10.6	12.2	11.5	12.1	13.0	14.4	14.7	16.0	14.7	10.4	6.20
90	9.61	9.37	9.58	9.52	7.37	4.27	1.37	4.01	7.16	10.7	10.9	10.8	11.7	12.6	13.5	14.0	10.5	5.72	1.92
95	10.3	10.3	9.73	8.73	5.71	2.91	0.73	2.49	5.19	8.88	11.3	12.1	13.3	13.8	13.9	12.0	7.95	3.88	1.19
100	10.1	9.81	9.04	7.34	4.68	2.37	0.78	1.34	3.93	6.89	10.4	12.9	14.5	14.5	13.0	9.40	5.91	2.23	1.06
105	10.0	9.71	8.79	6.81	4.30	2.02	0.85	0.94	2.97	5.73	8.71	11.8	13.4	13.2	11.0	7.78	4.78	1.57	1.05
110	8.97	8.62	7.38	5.47	3.47	1.56	0.97	0.96	1.83	4.06	6.78	9.78	11.5	11.2	9.06	5.90	3.30	1.27	1.12
115	6.96	6.60	5.52	4.19	2.66	1.32	1.09	1.06	1.34	2.86	4.51	6.37	7.75	7.46	6.05	4.26	2.14	1.22	1.33
120	5.50	5.24	4.60	3.39	2.26	1.32	1.22	1.20	1.30	2.06	3.39	4.56	5.48	5.38	4.51	3.12	1.75	1.29	1.56
125	4.88	4.64	3.95	3.05	1.96	1.38	1.35	1.32	1.35	1.67	2.44	3.27	4.10	4.01	3.32	2.45	1.56	1.37	1.72
130	4.41	4.19	3.42	2.68	1.80	1.50	1.47	1.45	1.45	1.55	1.96	2.38	3.13	3.05	2.61	1.94	1.56	1.49	1.86
135	3.84	3.64	2.91	2.24	1.75	1.61	1.59	1.57	1.59	1.58	1.73	1.94	2.55	2.48	2.11	1.72	1.64	1.62	1.98
140	3.22	2.92	2.40	2.04	1.78	1.72	1.71	1.71	1.73	1.71	1.76	1.87	1.98	2.10	1.74	1.78	1.74	1.79	2.07
145	2.74	2.39	2.18	1.98	1.87	1.83	1.83	1.86	1.87	1.84	1.86	1.95	1.92	1.89	1.81	1.88	1.86	1.95	2.14
150	2.52	2.20	2.10	2.01	1.98	2.05	2.04	2.01	1.99	1.97	1.98	2.05	1.99	1.94	1.93	1.96	1.97	2.06	2.16
155	2.45	2.17	2.12	2.09	2.21	2.18	2.18	2.14	2.10	2.08	2.10	2.17	2.09	2.02	2.04	2.06	2.08	2.14	2.18
160	2.51	2.19	2.18	2.32	2.33	2.31	2.31	2.25	2.18	2.17	2.20	2.28	2.15	2.12	2.14	2.15	2.16	2.21	2.22
165	2.57	2.25	2.27	2.43	2.43	2.42	2.39	2.32	2.25	2.27	2.29	2.39	2.20	2.21	2.22	2.21	2.23	2.26	2.28
170	2.38	2.31	2.55	2.53	2.51	2.48	2.44	2.39	2.34	2.34	2.37	2.47	2.27	2.28	2.29	2.29	2.32	2.33	2.35
175	2.40	2.35	2.53	2.54	2.51	2.48	2.46	2.42	2.40	2.41	2.44	2.53	2.36	2.37	2.37	2.38	2.40	2.42	2.41
180	2.42	2.44	2.46	2.40	2.44	2.44	2.45	2.45	2.45	2.44	2.49	2.59	2.42	2.44	2.46	2.41	2.44	2.45	2.44

C Range: 0 - 360DEG
 C Interval: 15.0DEG
 Test Speed: HIGH
 Temperature:25.3℃
 Operators:DAMIN
 Test Date:2024-07-10

γ Range: 0 - 180DEG
 γ Interval: 1.0DEG
 Test System:EVERFINE GO-2000B_V1 SYSTEM V2.00.471
 Humidity:65.0%
 Test Distance:4.880m [K=1.0000]
 Remarks:

LUMINOUS DISTRIBUTION INTENSITY DATA

NAME: LED Strip	TYPE: Indoor lighting	WEIGHT: 75g
SPEC.: LED	DIM.: 1000*10*5MM	SERIAL No.: 20240709001
MFR.: EVERFINE	SUR.: 1000*10MM	Shielding Angle:

Table--2

UNIT: cd

C (DEG) \ γ (DEG)	285	300	315	330	345														
0	204	204	204	207	208														
5	204	204	204	205	206														
10	202	202	201	202	202														
15	198	198	197	197	197														
20	193	192	191	191	191														
25	185	184	183	184	184														
30	176	175	174	175	173														
35	164	164	164	165	162														
40	151	152	151	151	153														
45	135	137	136	140	140														
50	118	121	121	129	128														
55	99.7	102	105	116	108														
60	80.2	83.8	94.4	101	101														
65	61.1	68.2	81.7	90.6	78.2														
70	43.2	52.1	63.3	53.6	57.0														
75	27.5	33.3	38.8	30.4	31.3														
80	14.3	19.7	22.5	19.1	17.6														
85	7.19	10.6	11.5	12.6	11.5														
90	3.12	6.36	9.72	10.1	9.58														
95	2.99	5.52	8.77	10.1	10.4														
100	2.85	4.76	7.38	8.90	9.86														
105	2.61	4.67	6.78	8.60	9.71														
110	2.26	4.01	5.58	7.46	8.72														
115	1.90	3.00	4.46	5.76	6.78														
120	1.97	2.46	3.55	4.72	5.48														
125	2.02	2.26	2.74	3.97	4.75														
130	2.08	2.01	2.38	3.30	4.21														
135	2.15	2.09	2.21	2.51	3.67														
140	2.21	2.15	2.20	2.17	2.85														
145	2.25	2.20	2.27	2.23	2.44														
150	2.26	2.25	2.30	2.33	2.40														
155	2.28	2.28	2.29	2.39	2.45														
160	2.29	2.31	2.31	2.41	2.48														
165	2.33	2.31	2.38	2.44	2.52														
170	2.37	2.36	2.41	2.47	2.56														
175	2.40	2.41	2.43	2.50	2.60														
180	2.45	2.45	2.45	2.46	2.61														

C Range: 0 - 360DEG
 C Interval: 15.0DEG
 Test Speed: HIGH
 Temperature:25.3°C
 Operators:DAMIN
 Test Date:2024-07-10

γ Range: 0 - 180DEG
 γ Interval: 1.0DEG
 Test System:EVERFINE GO-2000B_V1 SYSTEM V2.00.471
 Humidity:65.0%
 Test Distance:4.880m [K=1.0000]
 Remarks: