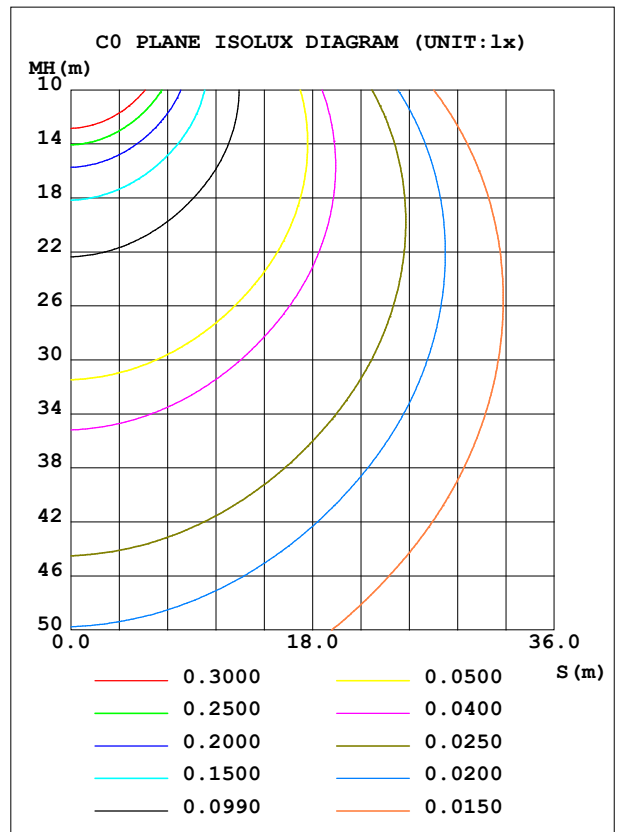
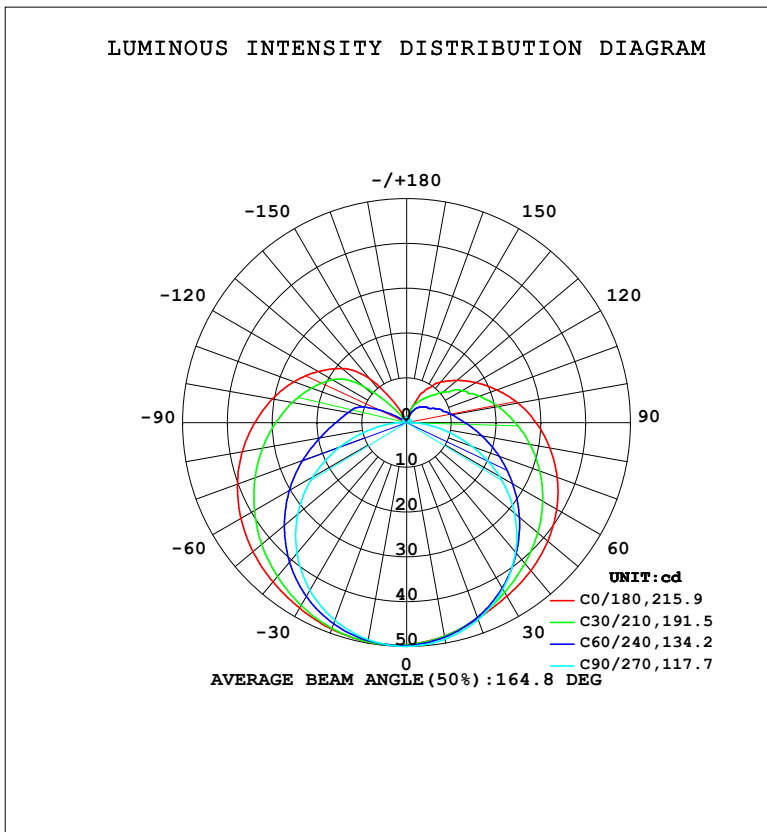


LUMINAIRE PHOTOMETRIC TEST REPORT

NAME: LED Strip	TYPE: Indoor lighting	WEIGHT: 75g
SPEC.: LED	DIM.: 1000*5*5MM	SERIAL No.: 20230525007
MFR.: EVERFINE	SUR.: 1000*5MM	Shielding Angle:

DATA OF LAMP		PHOTOMETRIC DATA			
MODEL: EU-HR-0816-B-085-LH-LLD		Imax (cd)	50.50	S/MH (C0/180)	1.46
NOMINAL POWER (W)	8.67432	LOR (%)	100.0	S/MH (C90/270)	1.29
RATED VOLTAGE (V)	AC 230V	TOTAL FLUX (lm)	273.34	<input type="checkbox"/> UP, DN (C0-180)	11.5, 38.0
NOMINAL FLUX (lm)	273.342	CIE CLASS	SEMI-D.	<input type="checkbox"/> UP, DN (C180-360)	12.0, 38.5
LAMPS INSIDE	1	<input type="checkbox"/> up (%)	23.5	CIBSE SHR NOM	1.50
TEST VOLTAGE (V)	AC 230V	<input type="checkbox"/> down (%)	76.5	CIBSE SHR MAX	1.55



C Range: 0 - 360DEG
 C Interval: 15.0DEG
 Test Speed: HIGH
 Temperature: 25.3°C
 Operators: DAMIN
 Test Date: 2023-07-07

Range: 0 - 180DEG
 Interval: 1.0DEG
 Test System: EVERFINE GO-2000B_V1 SYSTEM V2.00.471
 Humidity: 65.0%
 Test Distance: 4.880m [K=1.0000]
 Remarks:

ZONAL FLUX DIAGRAM

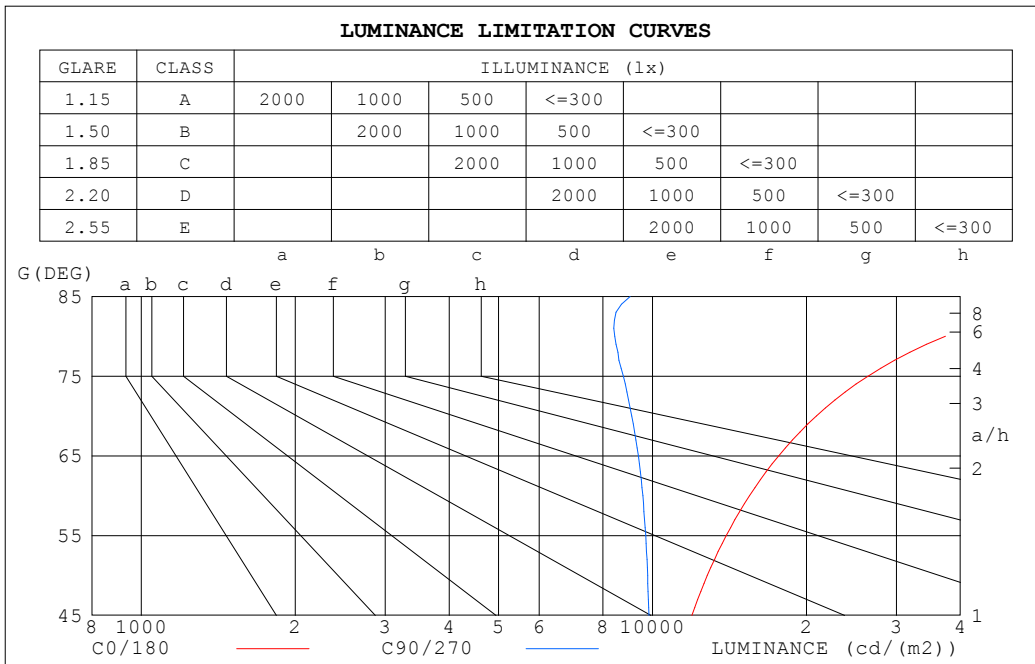
ZONAL FLUX DIAGRAM:

°	C0	C45	C90	C135	C180	C225	C270	C315	°	□ zone	□ total	%lum,lamp
10	48.39	48.53	49.11	49.98	49.69	49.63	49.20	49.22	0- 10	4.734	4.734	1.73,1.73
20	46.55	46.24	46.78	48.56	49.05	48.40	46.96	47.03	10- 20	13.72	18.45	6.75,6.75
30	44.76	43.10	42.99	46.13	47.84	46.04	43.23	43.85	20- 30	21.35	39.80	14.6,14.6
40	43.14	39.44	37.84	42.90	46.43	42.80	38.13	40.03	30- 40	27.04	66.84	24.5,24.5
50	41.15	35.54	31.44	39.31	44.79	39.11	31.72	35.97	40- 50	30.47	97.31	35.6,35.6
60	38.70	31.51	23.93	35.31	42.73	35.13	24.17	31.77	50- 60	31.49	128.8	47.1,47.1
70	35.76	27.35	15.57	31.02	40.21	30.95	15.81	27.59	60- 70	30.21	159.0	58.2,58.2
80	32.46	23.25	7.318	26.91	37.25	27.03	7.512	23.48	70- 80	27.14	186.1	68.1,68.1
90	28.91	19.40	1.596	23.16	33.90	23.44	1.647	16.30	80- 90	23.01	209.2	76.5,76.5
100	25.25	16.13	0.9188	20.13	30.47	20.44	1.002	16.24	90-100	19.08	228.2	83.5,83.5
110	21.45	13.16	0.7340	17.27	26.78	17.62	0.8469	13.61	100-110	16.02	244.2	89.4,89.4
120	17.92	10.22	0.9079	10.89	22.87	12.74	1.029	10.22	110-120	12.24	256.5	93.8,93.8
130	14.71	7.801	0.9228	3.557	18.85	4.333	1.060	7.779	120-130	8.297	264.8	96.9,96.9
140	11.85	6.046	0.8579	0.8709	12.71	0.9823	1.054	5.955	130-140	4.753	269.5	98.6,98.6
150	8.413	4.607	0.9399	0.6876	3.847	0.6139	1.223	4.380	140-150	2.251	271.8	99.4,99.4
160	3.812	2.405	0.8982	0.7476	1.064	0.6776	1.211	3.708	150-160	1.046	272.8	99.8,99.8
170	0.9024	1.014	0.9557	0.8592	0.6312	0.7829	1.164	2.857	160-170	0.4046	273.2	100,100
180	0.7671	0.8811	1.138	1.080	0.7659	0.8970	1.053	1.077	170-180	0.1045	273.3	100,100
DEG	LUMINOUS INTENSITY:cd									UNIT:lm		

C Range: 0 - 360DEG
 C Interval: 15.0DEG
 Test Speed: HIGH
 Temperature:25.3°C
 Operators:DAMIN
 Test Date:2023-07-07

□ Range: 0 - 180DEG
 □ Interval: 1.0DEG
 Test System:EVERFINE GO-2000B_V1 SYSTEM V2.00.471
 Humidity:65.0%
 Test Distance:4.880m [K=1.0000]
 Remarks:

LUMINANCE LIMITATION CURVES



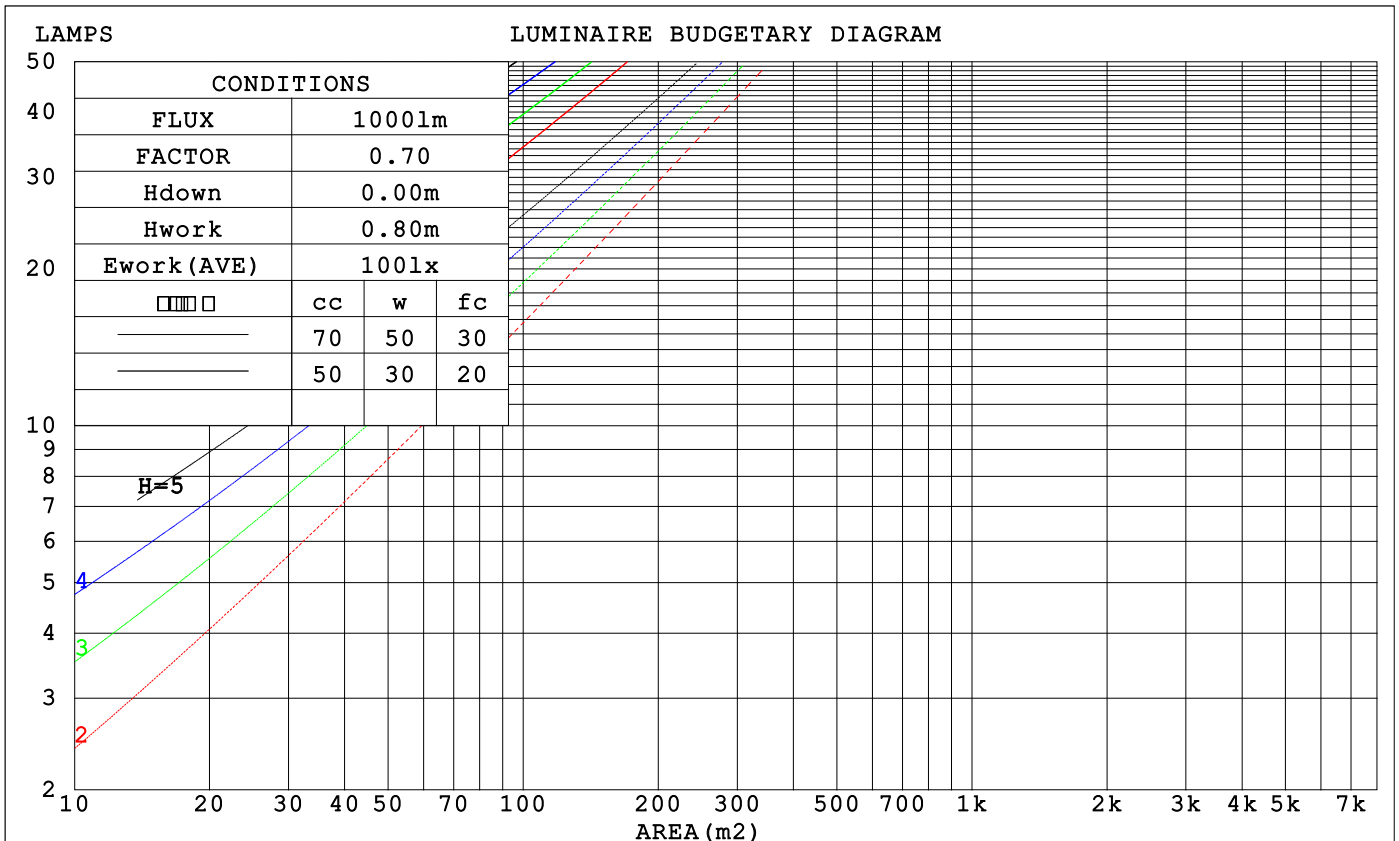
LUMINANCE cd/(m2)		
G (DEG)	C0/180	C90/270
85	70443	9041
80	37385	8428
75	26388	8763
70	20911	9104
65	17643	9384
60	15481	9570
55	13937	9695
50	12802	9783
45	11939	9836

C Range: 0 - 360DEG
 C Interval: 15.0DEG
 Test Speed: HIGH
 Temperature: 25.3°C
 Operators: DAMIN
 Test Date: 2023-07-07

Range: 0 - 180DEG
 Interval: 1.0DEG
 Test System: EVERFINE GO-2000B_V1 SYSTEM V2.00.471
 Humidity: 65.0%
 Test Distance: 4.880m [K=1.0000]
 Remarks:

CU AND LUMINAIRE BUDGETARY ESTIMATE DIAGRAM

□cc	80%			70%			50%			30%			10%			0
□w	50%	30%	10%	50%	30%	10%	50%	30%	10%	50%	30%	10%	50%	30%	10%	0
□fc	20%			20%			20%			20%			20%			0
RCR	RCR:Room Cavity Ratio						Coefficients of Utilization(CU)									
0.0	1.13	1.13	1.13	1.08	1.08	1.08	.98	.98	.98	.89	.89	.89	.80	.80	.80	.77
1.0	.94	.88	.83	.89	.84	.79	.80	.76	.73	.72	.69	.66	.65	.63	.60	.56
2.0	.80	.72	.65	.76	.68	.62	.68	.62	.57	.61	.57	.52	.55	.51	.48	.44
3.0	.69	.60	.52	.65	.57	.50	.59	.52	.47	.53	.47	.43	.48	.43	.39	.36
4.0	.60	.51	.43	.57	.49	.42	.52	.45	.39	.47	.41	.36	.42	.37	.33	.30
5.0	.53	.44	.37	.51	.42	.35	.46	.39	.33	.42	.35	.30	.37	.32	.28	.25
6.0	.48	.38	.32	.46	.37	.31	.41	.34	.28	.37	.31	.26	.34	.28	.24	.22
7.0	.43	.34	.28	.41	.33	.27	.37	.30	.25	.34	.28	.23	.31	.25	.21	.19
8.0	.39	.30	.24	.37	.29	.23	.34	.27	.22	.31	.25	.20	.28	.23	.19	.17
9.0	.36	.27	.22	.34	.26	.21	.31	.24	.20	.28	.22	.18	.26	.21	.17	.15
10.0	.33	.25	.19	.31	.24	.19	.29	.22	.18	.26	.20	.16	.24	.19	.15	.13



C Range: 0 - 360DEG
 C Interval: 15.0DEG
 Test Speed: HIGH
 Temperature:25.3°C
 Operators:DAMIN
 Test Date:2023-07-07

□ Range: 0 - 180DEG
 □ Interval: 1.0DEG
 Test System:EVERFINE GO-2000B_V1 SYSTEM V2.00.471
 Humidity:65.0%
 Test Distance:4.880m [K=1.0000]
 Remarks:

WEC AND CCEC

□cc	80%			70%			50%			30%			10%			0
□w	50%	30%	10%	50%	30%	10%	50%	30%	10%	50%	30%	10%	50%	30%	10%	0
□fc	20%			20%			20%			20%			20%			0
RCR	RCR:Room Cavity Ratio						Wall Exitance Coefficients (WEC)									
0.0	.399	.227	.072	.384	.219	.070	.357	.205	.065	.332	.192	.062	.310	.179	.058	
1.0	.341	.187	.057	.328	.180	.056	.303	.169	.052	.281	.157	.049	.260	.147	.046	
2.0	.301	.160	.048	.289	.155	.047	.267	.144	.044	.246	.135	.041	.227	.126	.039	
3.0	.269	.140	.041	.259	.135	.040	.238	.126	.038	.220	.118	.036	.202	.110	.033	
4.0	.244	.124	.036	.234	.120	.035	.216	.112	.033	.199	.105	.031	.183	.098	.029	
5.0	.223	.112	.032	.214	.108	.031	.197	.101	.029	.182	.094	.028	.167	.088	.026	
6.0	.205	.102	.029	.197	.098	.028	.182	.092	.026	.167	.086	.025	.154	.080	.023	
7.0	.190	.093	.026	.183	.090	.025	.169	.084	.024	.155	.079	.023	.143	.073	.021	
8.0	.177	.086	.024	.170	.083	.023	.157	.078	.022	.145	.073	.021	.133	.068	.020	
9.0	.166	.079	.022	.159	.077	.021	.147	.072	.020	.136	.067	.019	.125	.063	.018	

□cc	80%			70%			50%			30%			10%			0
□w	50%	30%	10%	50%	30%	10%	50%	30%	10%	50%	30%	10%	50%	30%	10%	0
□fc	20%			20%			20%			20%			20%			0
RCR	RCR:Room Cavity Ratio						Ceiling Cavity Exitance Coefficients (CCEC)									
0.0	.369	.369	.369	.316	.316	.316	.215	.215	.215	.124	.124	.124	.040	.040	.040	
1.0	.367	.336	.308	.314	.288	.265	.215	.198	.183	.124	.115	.107	.040	.037	.034	
2.0	.360	.313	.274	.309	.270	.237	.212	.187	.165	.122	.109	.097	.039	.035	.032	
3.0	.353	.297	.253	.303	.256	.219	.208	.178	.154	.120	.104	.091	.039	.034	.030	
4.0	.345	.285	.239	.296	.246	.207	.204	.172	.146	.118	.100	.086	.038	.033	.028	
5.0	.338	.275	.229	.290	.238	.199	.200	.166	.141	.116	.098	.084	.037	.032	.028	
6.0	.330	.267	.222	.284	.232	.194	.196	.162	.137	.114	.095	.081	.037	.031	.027	
7.0	.323	.261	.217	.278	.226	.189	.192	.159	.134	.112	.093	.080	.036	.031	.026	
8.0	.316	.255	.214	.272	.221	.186	.188	.156	.132	.110	.092	.079	.035	.030	.026	
9.0	.310	.251	.211	.267	.218	.184	.185	.153	.130	.108	.090	.078	.035	.030	.026	
10.0	.304	.247	.208	.262	.214	.182	.182	.151	.129	.106	.089	.077	.034	.029	.026	

C Range: 0 - 360DEG
 C Interval: 15.0DEG
 Test Speed: HIGH
 Temperature:25.3°C
 Operators:DAMIN
 Test Date:2023-07-07

□ Range: 0 - 180DEG
 □ Interval: 1.0DEG
 Test System:EVERFINE GO-2000B_V1 SYSTEM V2.00.471
 Humidity:65.0%
 Test Distance:4.880m [K=1.0000]
 Remarks:

UGR(Unified Glare Rating) Table

ceiling/cavity	0.7	0.7	0.5	0.5	0.3	0.7	0.7	0.5	0.5	0.3
walls	0.5	0.3	0.5	0.3	0.3	0.5	0.3	0.5	0.3	0.3
working plane	0.2	0.2	0.2	0.2	0.2	0.2	0.2	0.2	0.2	0.2
Room dimensions	Viewed crosswise					Viewed endwise				
x = 2H y = 2H	25.4	26.7	25.9	27.3	27.9	23.2	24.5	23.7	25.1	25.8
3H	28.3	29.5	28.9	30.1	30.8	24.8	26.0	25.4	26.7	27.4
4H	29.9	31.1	30.5	31.7	32.5	25.5	26.7	26.1	27.3	28.0
6H	31.7	32.8	32.4	33.5	34.2	26.1	27.2	26.7	27.8	28.6
8H	32.7	33.8	33.4	34.4	35.2	26.3	27.4	27.0	28.0	28.8
12H	33.9	34.9	34.5	35.6	36.3	26.5	27.5	27.1	28.2	29.0
4H 2H	25.9	27.1	26.6	27.7	28.5	24.4	25.5	25.0	26.2	26.9
3H	29.1	30.1	29.8	30.8	31.6	26.3	27.3	26.9	28.0	28.8
4H	30.9	31.9	31.6	32.6	33.4	27.2	28.1	27.9	28.8	29.6
6H	33.0	33.8	33.7	34.5	35.4	27.9	28.7	28.6	29.5	30.3
8H	34.1	34.9	34.8	35.6	36.5	28.2	29.0	28.9	29.7	30.6
12H	35.4	36.1	36.1	36.9	37.7	28.4	29.2	29.2	29.9	30.8
8H 4H	31.3	32.1	32.0	32.8	33.7	28.4	29.2	29.1	29.9	30.8
6H	33.6	34.3	34.4	35.1	36.0	29.5	30.2	30.3	31.0	31.9
8H	35.0	35.6	35.7	36.4	37.3	30.0	30.6	30.8	31.4	32.3
12H	36.5	37.1	37.3	37.9	38.8	30.5	31.0	31.3	31.8	32.7
12H 4H	31.3	32.0	32.0	32.8	33.7	28.8	29.5	29.5	30.3	31.1
6H	33.8	34.4	34.5	35.1	36.0	30.2	30.8	31.0	31.6	32.5
8H	35.2	35.7	36.0	36.5	37.5	30.9	31.4	31.7	32.2	33.2
Variations with the observer position at spacings(CIE Pub.117):										
S = 1.0H	+ 0.1 / - 0.1					+ 0.1 / - 0.1				
1.5H	+ 0.2 / - 0.3					+ 0.1 / - 0.2				
2.0H	+ 0.3 / - 0.4					+ 0.2 / - 0.3				

CIE Pub.117, 273.3 lm Total Lamp Luminous Flux Correct (8log(F/F0) = -4.5)
 Area: 0.005 m2

C Range: 0 - 360DEG
 C Interval: 15.0DEG
 Test Speed: HIGH
 Temperature:25.3°C
 Operators:DAMIN
 Test Date:2023-07-07

Range: 0 - 180DEG
 Interval: 1.0DEG
 Test System:EVERFINE GO-2000B_V1 SYSTEM V2.00.471
 Humidity:65.0%
 Test Distance:4.880m [K=1.0000]
 Remarks:

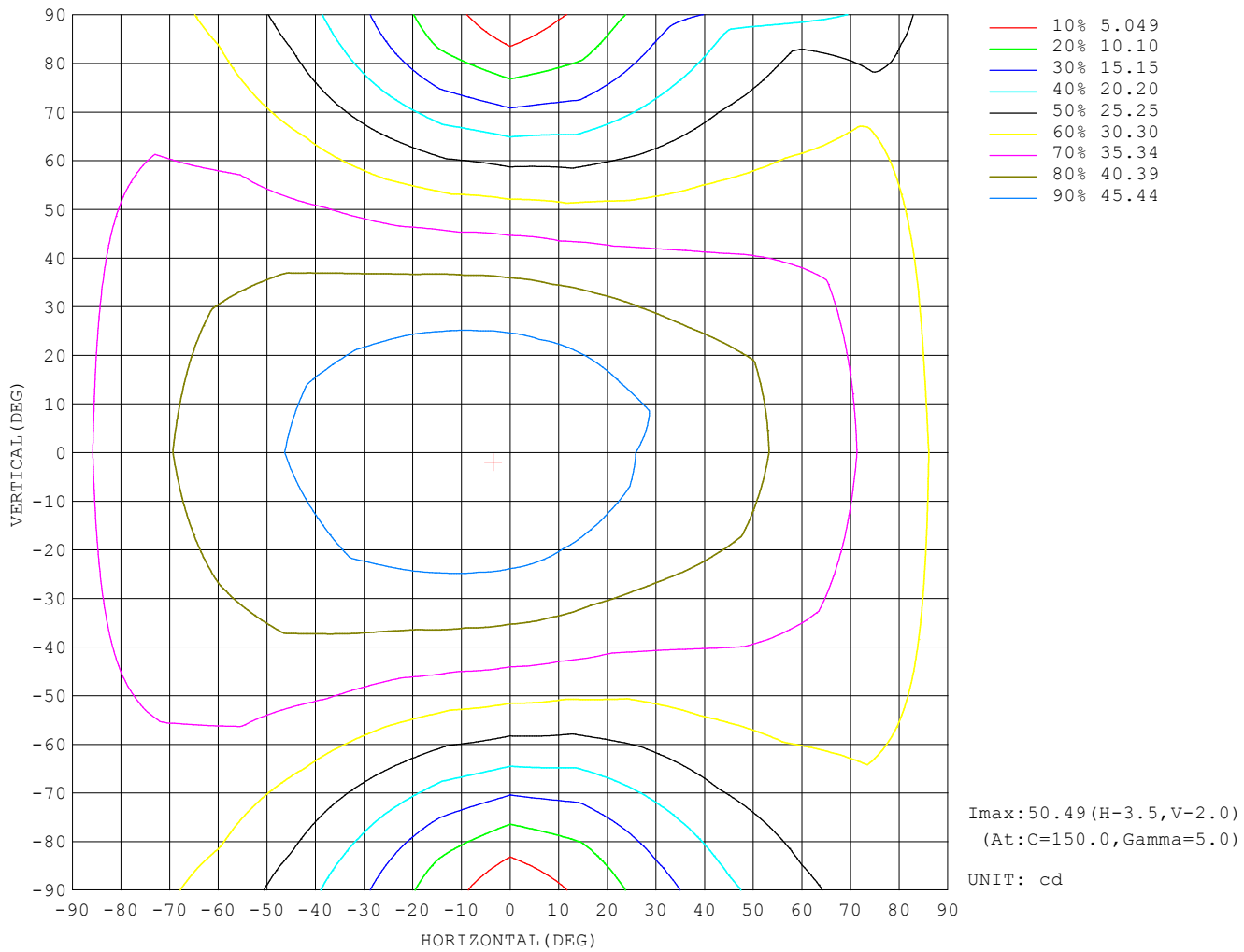
UTILIZATION FACTORS TABLE

REFLECTANCE										
Ceiling	0.8	0.8	0.8	0.7	0.7	0.7	0.5	0.5	0.5	0
Walls	0.7	0.5	0.3	0.7	0.5	0.3	0.7	0.5	0.3	0
Working plane	0.2	0.2	0.2	0.2	0.2	0.2	0.2	0.2	0.2	0
ROOM INDEX	UTILIZATION FACTORS (PERCENT) $k(RI) \times RCR = 5$									
$k = 0.60$	45	33	25	44	32	25	42	31	24	18
0.80	54	41	33	52	40	32	49	38	31	23
1.00	62	48	40	60	47	39	56	47	38	28
1.25	69	55	47	66	54	46	61	51	44	33
1.50	74	61	52	71	59	51	65	56	48	37
2.00	81	69	61	78	67	59	71	63	56	43
2.50	86	75	67	82	72	65	75	67	61	47
3.00	90	80	72	86	77	70	78	71	65	50
4.00	95	86	79	90	83	76	82	76	71	55
5.00	98	90	84	93	86	81	85	79	75	58
ROOM INDEX	UF (total)									Direct
According to DIN EN 13032-2 2004			Suspended				SHRNOM = 1.25			

C Range: 0 - 360DEG
 C Interval: 15.0DEG
 Test Speed: HIGH
 Temperature: 25.3°C
 Operators: DAMIN
 Test Date: 2023-07-07

Range: 0 - 180DEG
 Interval: 1.0DEG
 Test System: EVERFINE GO-2000B_V1 SYSTEM V2.00.471
 Humidity: 65.0%
 Test Distance: 4.880m [K=1.0000]
 Remarks:

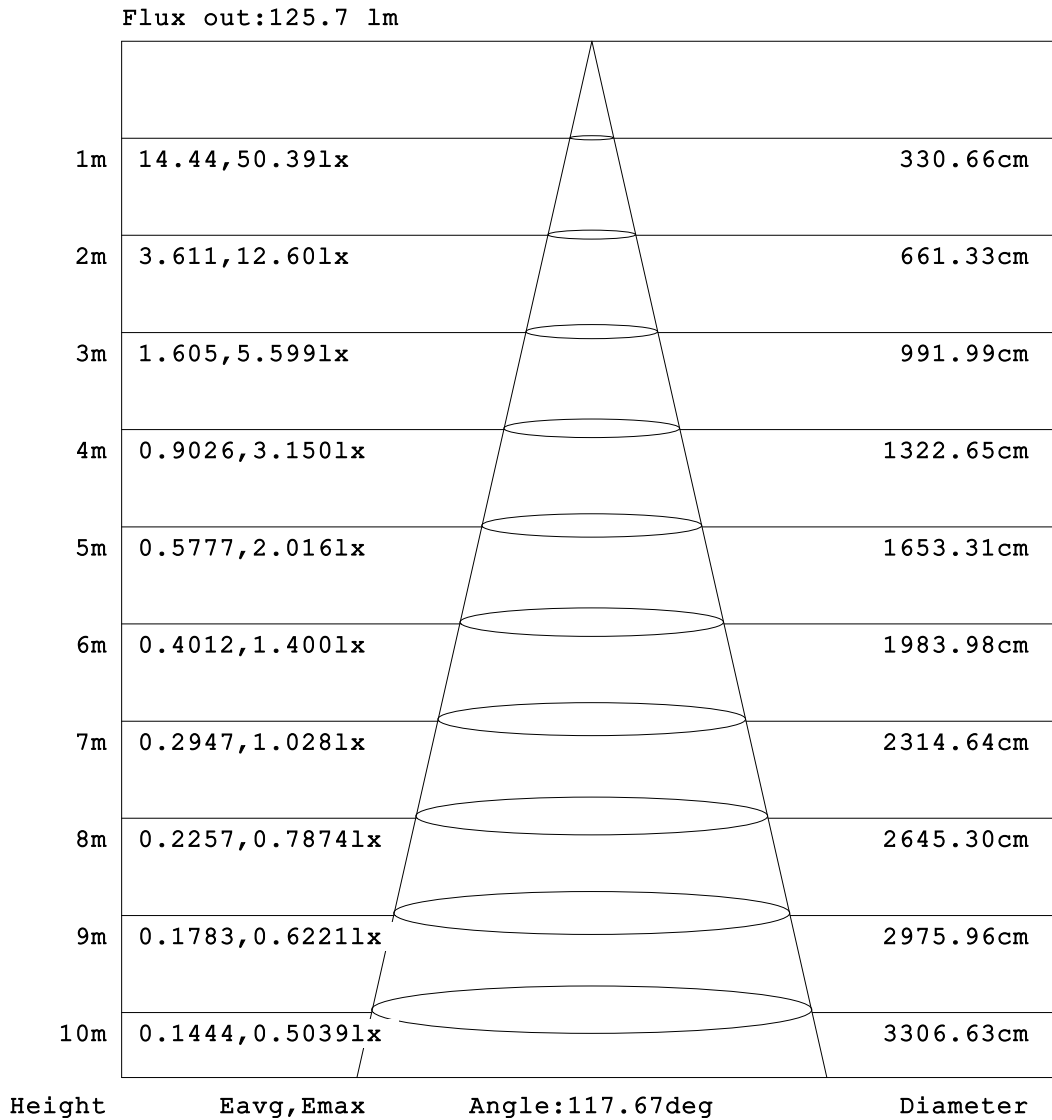
ISOCANDELA DIAGRAM



C Range: 0 - 360DEG
 C Interval: 15.0DEG
 Test Speed: HIGH
 Temperature: 25.3°C
 Operators: DAMIN
 Test Date: 2023-07-07

Range: 0 - 180DEG
 Interval: 1.0DEG
 Test System: EVERFINE GO-2000B_V1 SYSTEM V2.00.471
 Humidity: 65.0%
 Test Distance: 4.880m [K=1.0000]
 Remarks:

AAI Figure

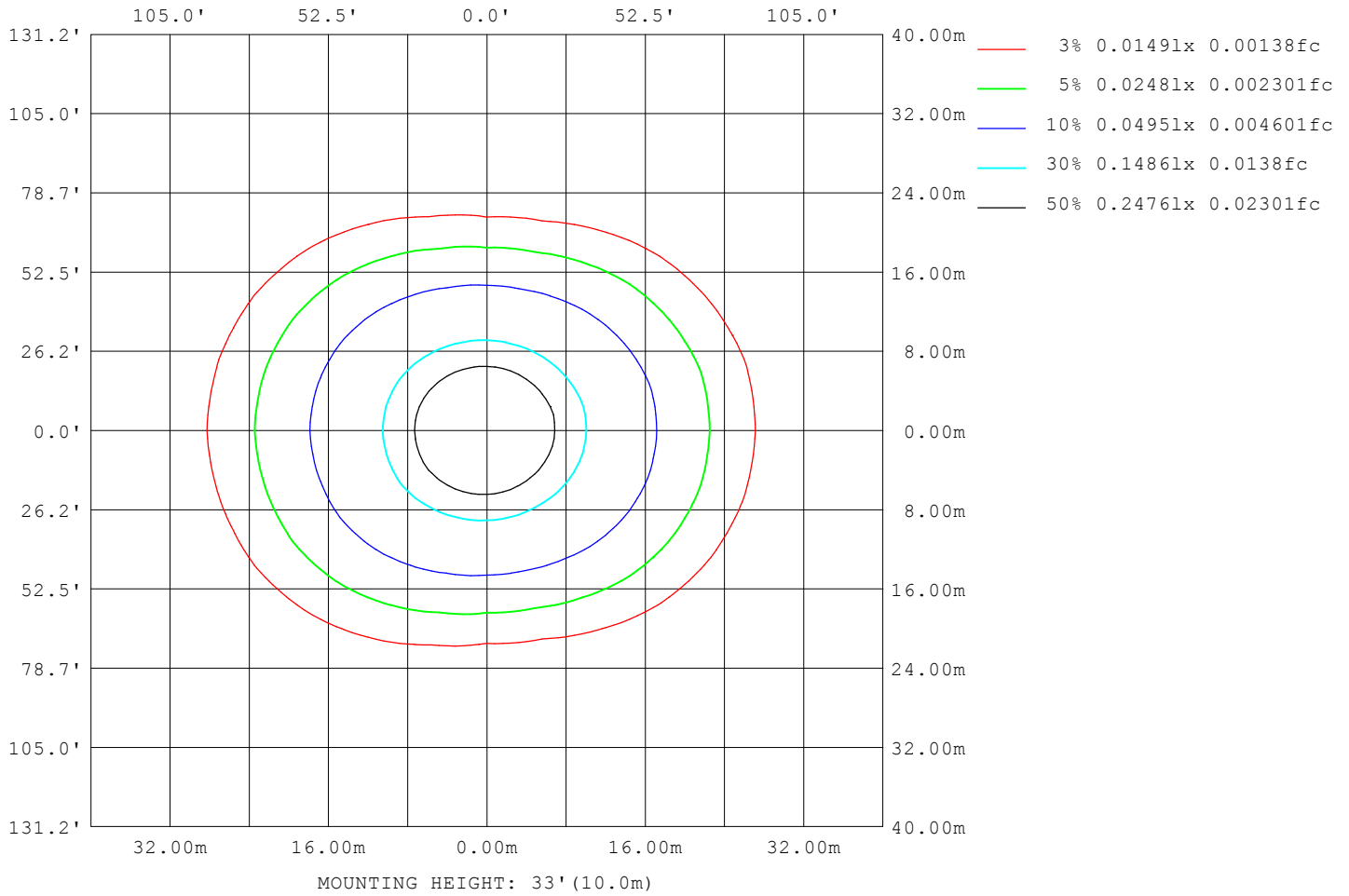


Note:The Curves indicate the illuminated area and the average illumination when the luminaire is at different distance.

C Range: 0 - 360DEG
 C Interval: 15.0DEG
 Test Speed: HIGH
 Temperature:25.3°C
 Operators:DAMIN
 Test Date:2023-07-07

Range: 0 - 180DEG
 Interval: 1.0DEG
 Test System:EVERFINE GO-2000B_V1 SYSTEM V2.00.471
 Humidity:65.0%
 Test Distance:4.880m [K=1.0000]
 Remarks:

ISOLUX DIAGRAM



C Range: 0 - 360DEG
 C Interval: 15.0DEG
 Test Speed: HIGH
 Temperature: 25.3°C
 Operators: DAMIN
 Test Date: 2023-07-07

Range: 0 - 180DEG
 Interval: 1.0DEG
 Test System: EVERFINE GO-2000B_V1 SYSTEM V2.00.471
 Humidity: 65.0%
 Test Distance: 4.880m [K=1.0000]
 Remarks:

LED Avg.L Report

NAME: LED Strip	TYPE: Indoor lighting	WEIGHT: 75g
SPEC.: LED	DIM.: 1000*5*5MM	SERIAL No.: 20230525007
MFR.: EVERFINE	SUR.: 1000*5MM	Shielding Angle:

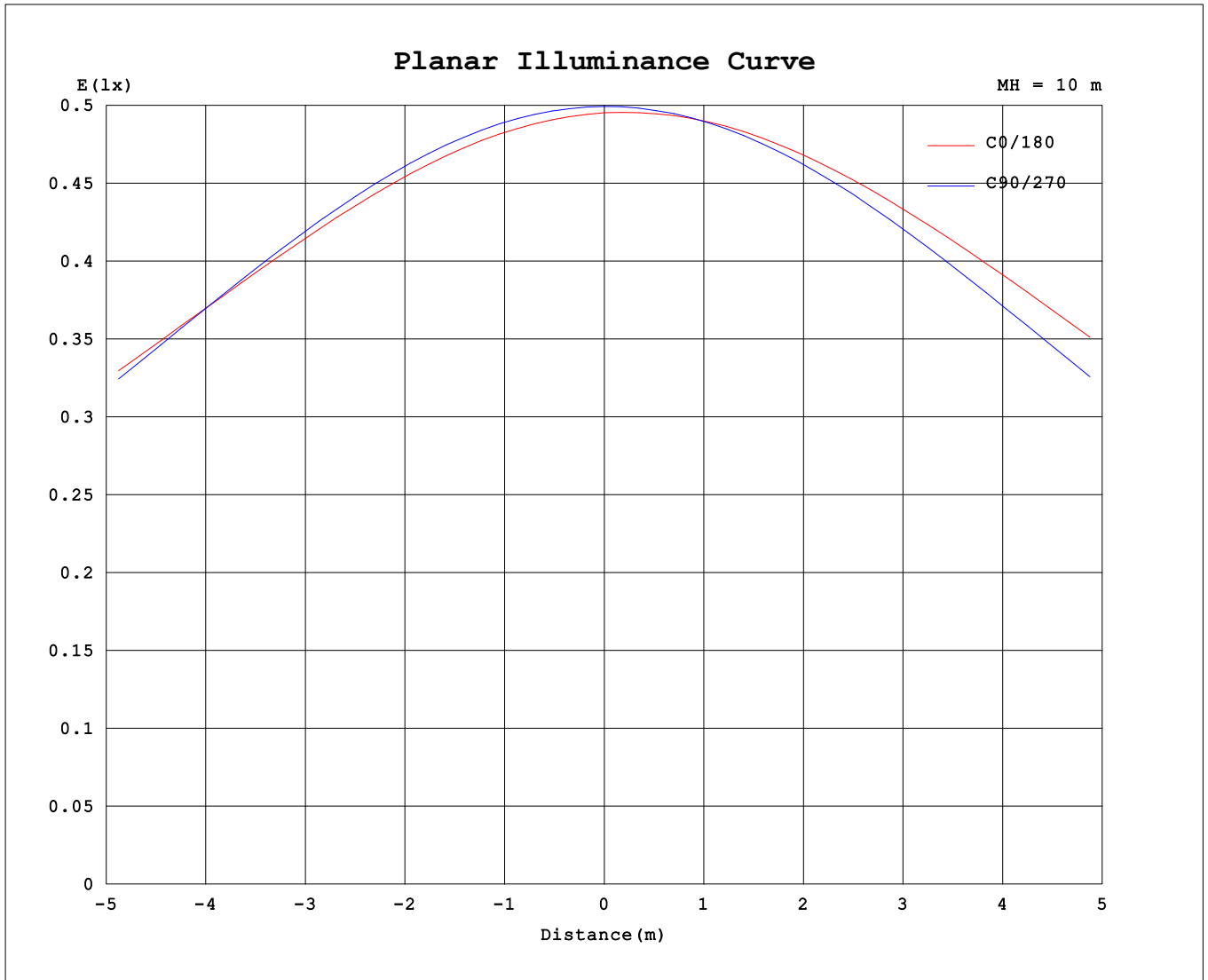
AvgL	cd/m2
L_0~180 (65) av	18647
L_0~180 (75) av	28180
L_0~180 (85) av	76081
L_90~270 (65) av	9440
L_90~270 (75) av	8849
L_90~270 (85) av	9211
L_45 (65) av	14823
L_45 (75) av	20995
L_45 (85) av	53328

Standard: GB/T 29293-2012

C Range: 0 - 360DEG
 C Interval: 15.0DEG
 Test Speed: HIGH
 Temperature:25.3℃
 Operators:DAMIN
 Test Date:2023-07-07

Range: 0 - 180DEG
 Interval: 1.0DEG
 Test System:EVERFINE GO-2000B_V1 SYSTEM V2.00.471
 Humidity:65.0%
 Test Distance:4.880m [K=1.0000]
 Remarks:

Planar Illuminance Curve



C Range: 0 - 360DEG
 C Interval: 15.0DEG
 Test Speed: HIGH
 Temperature: 25.3°C
 Operators: DAMIN
 Test Date: 2023-07-07

Range: 0 - 180DEG
 Interval: 1.0DEG
 Test System: EVERFINE GO-2000B_V1 SYSTEM V2.00.471
 Humidity: 65.0%
 Test Distance: 4.880m [K=1.0000]
 Remarks:

LUMINOUS DISTRIBUTION INTENSITY DATA

Table--1

UNIT: cd

C (DEG) \ □ (DEG)	0	15	30	45	60	75	90	105	120	135	150	165	180	195	210	225	240	255	270
0	49.5	49.7	49.6	49.7	49.7	49.9	49.9	50.0	50.1	50.2	50.4	50.2	49.5	49.7	49.6	49.7	49.7	49.9	49.9
5	49.1	49.2	49.1	49.2	49.4	49.6	49.7	49.8	50.1	50.3	50.5	50.2	49.7	49.9	49.8	49.8	49.8	49.8	49.8
10	48.4	48.6	48.4	48.5	48.7	48.9	49.1	49.3	49.7	50.0	50.4	50.0	49.7	49.8	49.7	49.6	49.5	49.3	49.2
15	47.5	47.7	47.5	47.5	47.6	47.9	48.1	48.4	48.9	49.4	50.0	49.6	49.5	49.6	49.4	49.2	48.8	48.5	48.3
20	46.6	46.6	46.3	46.2	46.3	46.5	46.8	47.2	47.8	48.6	49.3	49.0	49.0	49.2	48.9	48.4	47.8	47.3	47.0
25	45.6	45.6	45.1	44.7	44.6	44.8	45.1	45.6	46.5	47.5	48.5	48.2	48.5	48.6	48.1	47.3	46.4	45.7	45.3
30	44.8	44.5	43.8	43.1	42.7	42.7	43.0	43.7	44.8	46.1	47.4	47.4	47.8	47.8	47.2	46.0	44.8	43.8	43.2
35	44.0	43.5	42.4	41.3	40.5	40.3	40.6	41.4	42.8	44.6	46.3	46.6	47.1	47.0	46.0	44.5	42.9	41.6	40.8
40	43.1	42.6	41.0	39.4	38.1	37.6	37.8	38.9	40.6	42.9	45.1	45.7	46.4	46.1	44.9	42.8	40.7	39.0	38.1
45	42.2	41.5	39.7	37.5	35.5	34.7	34.8	36.0	38.2	41.2	43.9	44.8	45.7	45.2	43.6	41.0	38.3	36.1	35.1
50	41.1	40.4	38.2	35.5	32.9	31.5	31.4	32.9	35.6	39.3	42.5	43.7	44.8	44.1	42.3	39.1	35.6	33.0	31.7
55	40.0	39.1	36.7	33.5	30.1	28.0	27.8	29.6	33.0	37.3	40.9	42.5	43.8	43.0	40.8	37.2	32.9	29.6	28.1
60	38.7	37.7	35.1	31.5	27.4	24.4	23.9	26.1	30.4	35.3	39.3	41.3	42.7	41.8	39.3	35.1	30.2	26.1	24.2
65	37.3	36.3	33.4	29.4	24.6	20.6	19.8	22.5	27.7	33.2	37.6	39.9	41.5	40.5	37.7	33.0	27.5	22.5	20.1
70	35.8	34.7	31.6	27.3	22.0	17.0	15.6	19.0	25.0	31.0	35.9	38.5	40.2	39.1	36.0	31.0	24.7	18.8	15.8
75	34.1	33.0	29.8	25.3	19.4	13.5	11.3	15.6	22.3	28.9	34.1	36.9	38.8	37.6	34.4	29.0	22.1	15.3	11.6
80	32.5	31.3	28.0	23.2	17.1	10.4	7.32	12.3	19.8	26.9	32.4	35.3	37.2	36.0	32.7	27.0	19.7	12.1	7.51
85	30.7	29.5	26.1	21.3	14.9	7.89	3.94	9.60	17.7	25.0	30.5	33.6	35.6	34.3	30.9	25.2	17.6	9.29	4.09
90	28.9	27.7	24.3	19.4	13.0	6.02	1.60	7.63	15.8	23.2	28.7	31.7	33.9	32.6	29.2	23.4	15.8	7.39	1.65
95	27.1	25.9	22.5	17.7	11.5	5.02	1.01	6.48	14.4	21.6	27.1	30.0	32.2	30.9	27.6	21.9	14.5	6.32	1.16
100	25.3	24.1	20.8	16.1	10.4	4.49	0.92	5.14	13.2	20.1	25.4	28.3	30.5	29.2	26.0	20.4	13.3	5.27	1.00
105	23.3	22.3	19.1	14.5	9.20	4.14	0.73	2.97	12.0	18.7	23.8	26.5	28.6	27.4	24.3	19.0	12.2	2.58	0.77
110	21.5	20.5	17.3	13.2	8.37	4.19	0.73	1.07	9.32	17.3	22.2	24.7	26.8	25.6	22.6	17.6	10.3	0.90	0.85
115	19.6	18.8	15.2	12.0	7.14	3.83	0.83	0.50	6.10	14.8	20.5	22.9	24.8	23.8	20.9	15.9	6.62	0.53	0.91
120	17.9	16.7	14.3	10.2	6.41	3.68	0.91	0.46	3.18	10.9	18.0	21.0	22.9	21.8	19.2	12.7	3.39	0.44	1.03
125	16.3	15.4	12.5	8.94	5.79	3.55	0.93	0.47	1.23	6.83	13.9	19.0	20.8	19.9	16.9	8.20	1.45	0.49	1.05
130	14.7	13.9	10.6	7.80	5.48	3.28	0.92	0.50	0.71	3.56	9.08	16.1	18.8	17.6	12.7	4.33	0.81	0.53	1.06
135	13.2	11.6	8.84	6.82	4.98	2.66	0.89	0.54	0.60	1.47	4.78	11.6	16.3	13.3	7.34	1.87	0.60	0.57	1.06
140	11.9	10.1	7.59	6.05	4.55	2.04	0.86	0.59	0.59	0.87	2.03	6.48	12.7	7.63	3.07	0.98	0.56	0.64	1.05
145	9.98	8.33	6.50	5.32	4.03	1.62	0.86	0.68	0.62	0.70	1.14	2.86	7.88	2.85	1.14	0.70	0.59	0.69	1.05
150	8.41	6.54	5.48	4.61	3.30	1.38	0.94	0.73	0.67	0.69	0.85	1.68	3.85	1.02	0.73	0.61	0.63	0.76	1.22
155	6.62	5.22	4.57	3.82	2.32	1.12	0.91	0.76	0.71	0.72	0.72	1.32	1.74	0.62	0.62	0.64	0.67	0.84	1.21
160	3.81	3.69	3.28	2.41	1.56	1.01	0.90	0.80	0.75	0.75	0.77	1.03	1.06	0.58	0.64	0.68	0.73	0.93	1.21
165	1.53	1.53	1.50	1.20	1.18	0.96	0.92	0.85	0.79	0.79	0.80	0.81	0.69	0.60	0.67	0.73	0.78	0.99	1.19
170	0.90	0.89	0.94	1.01	1.11	1.01	0.96	0.91	0.90	0.86	0.85	0.83	0.63	0.64	0.71	0.78	0.87	1.03	1.16
175	0.82	0.82	0.87	0.96	1.05	1.00	1.06	0.99	0.99	0.98	0.97	0.92	0.70	0.71	0.78	0.87	0.93	1.04	1.11
180	0.77	0.77	0.82	0.88	0.97	1.00	1.14	1.13	1.16	1.08	1.04	1.00	0.77	0.77	0.81	0.90	0.94	1.03	1.05

C Range: 0 - 360DEG
 C Interval: 15.0DEG
 Test Speed: HIGH
 Temperature: 25.3°C
 Operators: DAMIN
 Test Date: 2023-07-07

□ Range: 0 - 180DEG
 □ Interval: 1.0DEG
 Test System: EVERFINE GO-2000B_V1 SYSTEM V2.00.471
 Humidity: 65.0%
 Test Distance: 4.880m [K=1.0000]
 Remarks:

LUMINOUS DISTRIBUTION INTENSITY DATA

Table--2

UNIT: cd

C (DEG) □ (DEG)	285	300	315	330	345														
0	50.0	50.1	50.2	50.4	50.2														
5	49.7	49.8	49.9	50.0	49.9														
10	49.1	49.2	49.2	49.3	49.3														
15	48.1	48.2	48.3	48.4	48.5														
20	46.8	46.9	47.0	47.2	47.6														
25	45.0	45.3	45.6	45.9	46.5														
30	43.0	43.3	43.8	44.5	45.4														
35	40.6	41.1	42.0	43.0	44.3														
40	37.9	38.7	40.0	41.6	43.3														
45	35.0	36.2	38.0	40.0	42.2														
50	31.8	33.5	36.0	38.5	41.1														
55	28.3	30.7	33.9	36.9	39.8														
60	24.7	27.9	31.8	35.3	38.4														
65	21.0	25.0	29.7	33.6	36.9														
70	17.3	22.3	27.6	31.8	35.3														
75	13.8	19.8	25.5	30.0	33.6														
80	10.6	17.4	23.5	28.1	31.9														
85	8.10	15.2	21.5	26.3	28.7														
90	6.03	13.0	16.3	18.5	21.2														
95	4.64	11.0	16.9	19.5	22.6														
100	4.63	10.4	16.2	20.9	24.6														
105	4.10	9.51	14.9	19.3	22.9														
110	4.39	8.72	13.6	17.8	21.1														
115	4.01	7.22	12.5	16.2	19.4														
120	3.78	6.19	10.2	14.9	17.7														
125	3.55	6.02	8.86	13.3	16.1														
130	3.30	5.60	7.78	10.9	14.0														
135	3.16	5.01	6.45	9.03	12.3														
140	3.12	4.43	5.95	7.75	9.49														
145	3.08	3.91	5.18	6.50	6.99														
150	3.30	3.46	4.38	5.19	5.20														
155	3.11	3.72	3.59	4.26	3.75														
160	2.84	3.59	3.71	3.35	2.06														
165	2.48	3.22	3.52	3.04	1.63														
170	2.04	2.57	2.86	2.71	1.18														
175	1.59	1.77	1.78	1.62	0.86														
180	1.23	1.13	1.08	1.05	0.99														

C Range: 0 - 360DEG
 C Interval: 15.0DEG
 Test Speed: HIGH
 Temperature:25.3°C
 Operators:DAMIN
 Test Date:2023-07-07

□ Range: 0 - 180DEG
 □ Interval: 1.0DEG
 Test System:EVERFINE GO-2000B_V1 SYSTEM V2.00.471
 Humidity:65.0%
 Test Distance:4.880m [K=1.0000]
 Remarks: