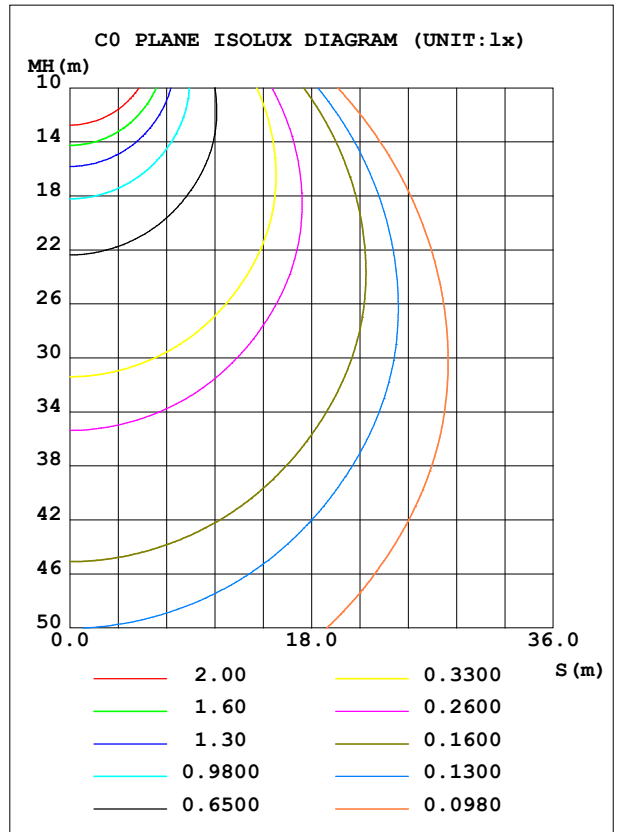
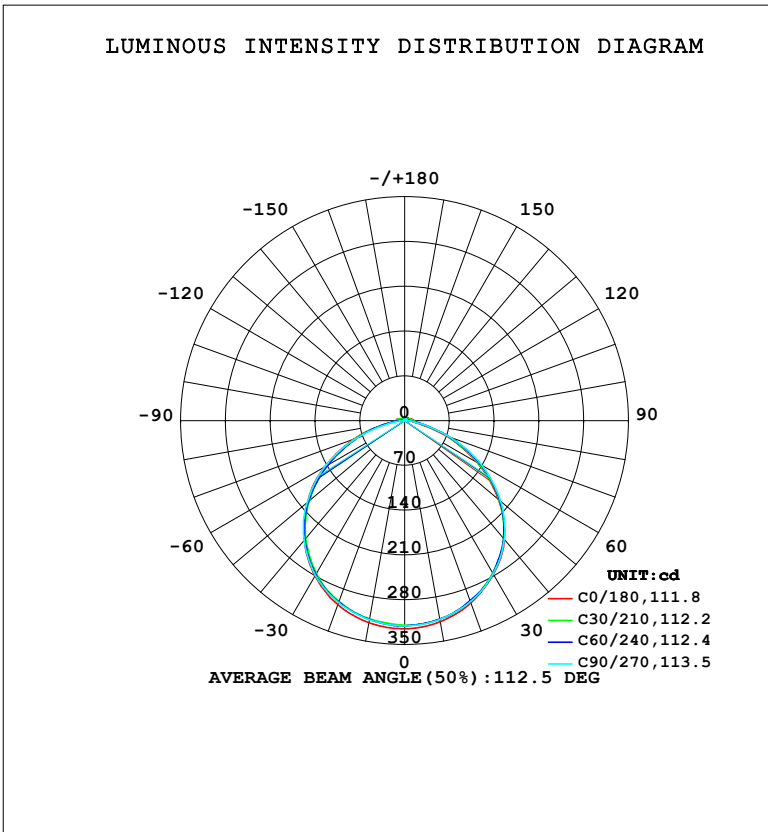


**LUMINAIRE PHOTOMETRIC TEST REPORT**

NAME: LED Strip	TYPE: Indoor lighting	WEIGHT: 20g
SPEC.: LED	DIM.: 1000*12*5MM	SERIAL No.: 20240125013
MFR.: Hide-a-lite	SUR.: 1000*12MM	Shielding Angle:

DATA OF LAMP		PHOTOMETRIC DATA			
MODE: WFLST2WAC-01-EU-HR-EP-LD		Imax (cd)	325.3	S/MH (C0/180)	1.28
NOMINAL POWER (W)	8.48735	LOR (%)	100.0	S/MH (C90/270)	1.29
RATED VOLTAGE (V)	AC 230V	TOTAL FLUX (lm)	932.72	$\eta$ UP, DN (C0-180)	1.7, 48.2
NOMINAL FLUX (lm)	932.717	CIE CLASS	DIRECT	$\eta$ UP, DN (C180-360)	1.7, 48.3
LAMPS INSIDE	1	$\eta$ up (%)	3.5	CIBSE SHR NOM	1.25
TEST VOLTAGE (V)	AC 230V	$\eta$ down (%)	96.5	CIBSE SHR MAX	1.35



C Range: 0 - 360DEG  
 C Interval: 15.0DEG  
 Test Speed: HIGH  
 Temperature: 25.3°C  
 Operators: DAMIN  
 Test Date: 2024-01-29

$\gamma$  Range: 0 - 180DEG  
 $\gamma$  Interval: 1.0DEG  
 Test System: EVERFINE GO-2000B\_V1 SYSTEM V2.00.471  
 Humidity: 65.0%  
 Test Distance: 4.880m [K=1.0000]  
 Remarks:

ZONAL FLUX DIAGRAM

ZONAL FLUX DIAGRAM:

$\gamma$	C0	C45	C90	C135	C180	C225	C270	C315	$\gamma$	$\Phi$ zone	$\Phi$ total	%lum,lamp
10	319.3	315.3	315.3	316.1	320.8	315.4	315.9	315.5	0- 10	30.38	30.38	3.26,3.26
20	302.9	299.4	300.9	300.7	305.9	300.9	302.4	298.9	10- 20	87.40	117.8	12.6,12.6
30	277.4	274.0	276.6	277.6	280.4	276.1	279.0	273.6	20- 30	133.5	251.3	26.9,26.9
40	242.6	239.2	242.3	241.7	244.1	240.9	244.5	238.6	30- 40	162.4	413.6	44.3,44.3
50	191.6	194.5	195.7	194.9	198.4	193.2	198.9	192.7	40- 50	168.6	582.2	62.4,62.4
60	130.5	135.6	138.9	137.1	144.6	136.6	143.8	131.8	50- 60	148.5	730.7	78.3,78.3
70	68.45	73.00	74.24	78.45	84.17	80.16	79.06	68.91	60- 70	104.4	835.1	89.5,89.5
80	16.27	23.62	20.65	24.63	28.02	29.16	23.00	20.85	70- 80	49.92	885.0	94.9,94.9
90	12.25	12.30	1.426	14.82	11.76	12.48	1.531	11.71	80- 90	15.46	900.5	96.5,96.5
100	12.07	7.442	1.102	8.823	12.52	9.253	1.135	7.387	90-100	9.423	909.9	97.6,97.6
110	8.271	5.492	1.495	4.780	9.211	5.207	1.550	5.517	100-110	6.943	916.9	98.3,98.3
120	6.453	4.355	1.906	3.805	5.691	3.873	1.982	4.432	110-120	4.648	921.5	98.8,98.8
130	5.795	3.963	2.289	3.377	4.630	3.465	2.368	3.878	120-130	3.404	924.9	99.2,99.2
140	5.481	3.639	2.678	2.911	4.140	3.059	2.745	3.552	130-140	2.783	927.7	99.5,99.5
150	4.478	3.241	3.082	3.023	3.386	3.135	3.118	3.379	140-150	2.117	929.8	99.7,99.7
160	3.700	3.432	3.416	3.370	3.444	3.452	3.440	3.480	150-160	1.550	931.4	99.9,99.9
170	3.742	3.690	3.680	3.670	3.734	3.718	3.689	3.696	160-170	1.007	932.4	100,100
180	3.877	3.853	3.842	3.834	3.867	3.854	3.831	3.844	170-180	0.3579	932.7	100,100
DEG	LUMINOUS INTENSITY:cd									UNIT:lm		

Conical surface Flux(90deg): 498.79 lm

%lum = 53.5%

%lamp = 53.5%

Conical surface Flux(120deg): 730.7 lm

%lum = 78.3%

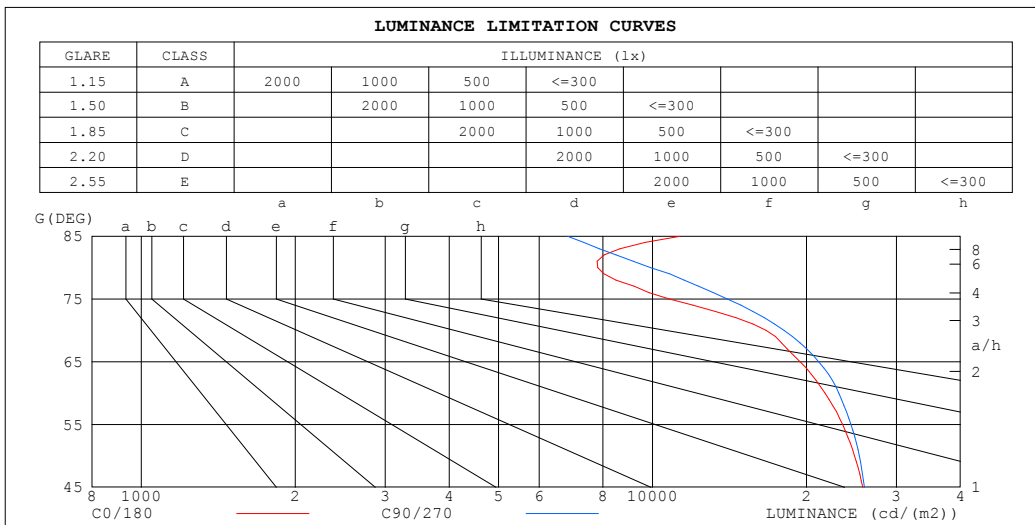
%lamp = 78.3%

C Range: 0 - 360DEG  
 C Interval: 15.0DEG  
 Test Speed: HIGH  
 Temperature:25.3°C  
 Operators:DAMIN  
 Test Date:2024-01-29

$\gamma$  Range: 0 - 180DEG  
 $\gamma$  Interval: 1.0DEG  
 Test System:EVERFINE GO-2000B\_V1 SYSTEM V2.00.471  
 Humidity:65.0%  
 Test Distance:4.880m [K=1.0000]  
 Remarks:

**LUMINANCE LIMITATION CURVES**

<b>NAME:</b> LED Strip	<b>TYPE:</b> Indoor lighting	<b>WEIGHT:</b> 20g
<b>SPEC.:</b> LED	<b>DIM.:</b> 1000*12*5MM	<b>SERIAL No.:</b> 20240125013
<b>MFR.:</b> Hide-a-lite	<b>SUR.:</b> 1000*12MM	<b>Shielding Angle:</b>



LUMINANCE cd/(m2)		
G (DEG)	C0/180	C90/270
85	11320	6824
80	7808	9910
75	10797	14021
70	16678	18089
65	19431	21138
60	21754	23149
55	23540	24447
50	24843	25376
45	25780	25971

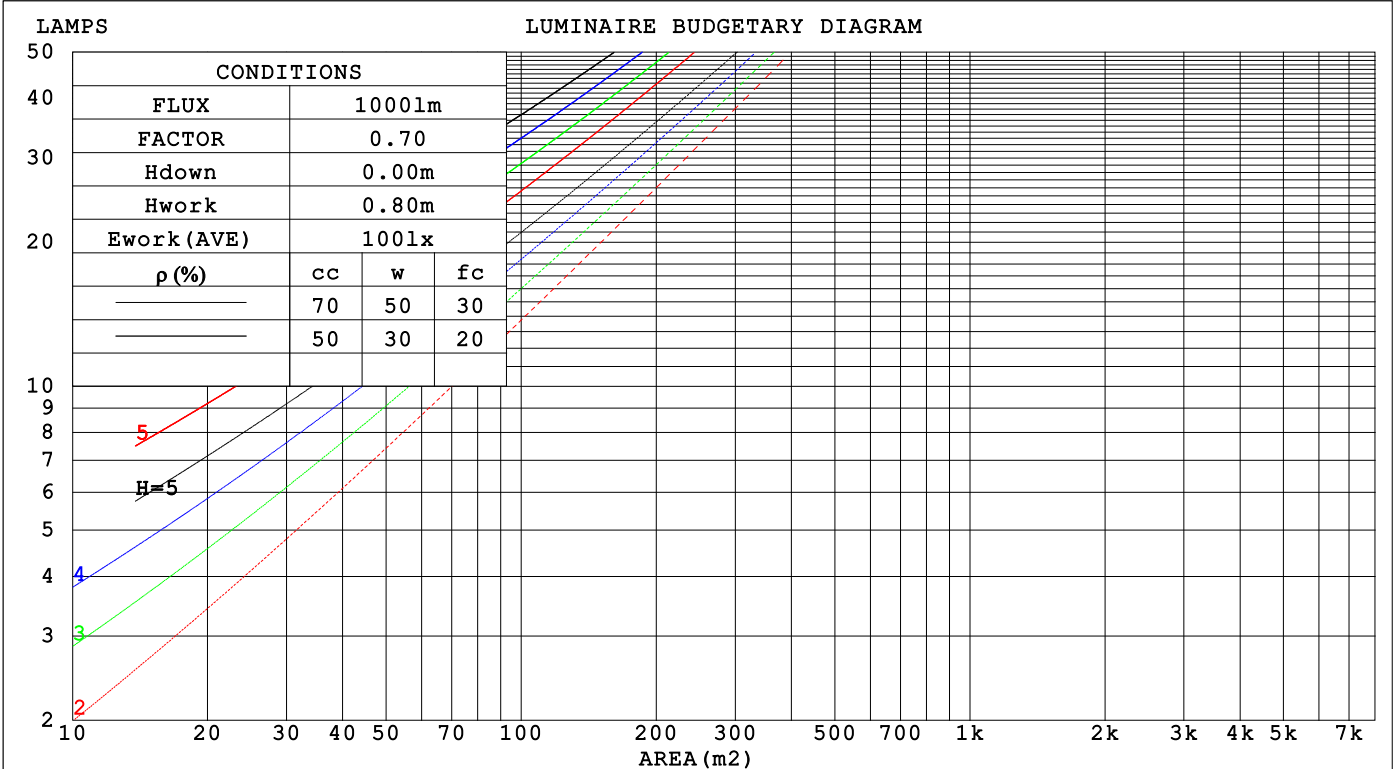
C Range: 0 - 360DEG  
 C Interval: 15.0DEG  
 Test Speed: HIGH  
 Temperature: 25.3°C  
 Operators: DAMIN  
 Test Date: 2024-01-29

γ Range: 0 - 180DEG  
 γ Interval: 1.0DEG  
 Test System: EVERFINE GO-2000B\_V1 SYSTEM V2.00.471  
 Humidity: 65.0%  
 Test Distance: 4.880m [K=1.0000]  
 Remarks:

**CU AND LUMINAIRE BUDGETARY ESTIMATE DIAGRAM**

NAME: LED Strip	TYPE: Indoor lighting	WEIGHT: 20g
SPEC.: LED	DIM.: 1000*12*5MM	SERIAL No.: 20240125013
MFR.: Hide-a-lite	SUR.: 1000*12MM	Shielding Angle:

pcc	80%			70%			50%			30%			10%			0
	50%	30%	10%	50%	30%	10%	50%	30%	10%	50%	30%	10%	50%	30%	10%	0
p <sub>w</sub>	50%	30%	10%	50%	30%	10%	50%	30%	10%	50%	30%	10%	50%	30%	10%	0
p <sub>fc</sub>	20%			20%			20%			20%			20%			0
RCR	RCR:Room Cavity Ratio															
	Coefficients of Utilization(CU)															
0.0	1.18	1.18	1.18	1.15	1.15	1.15	1.09	1.09	1.09	1.04	1.04	1.04	.99	.99	.99	.97
1.0	1.04	.90	.96	1.01	.97	.94	.96	.93	.90	.92	.89	.87	.88	.86	.84	.81
2.0	.91	.84	.78	.88	.82	.77	.84	.79	.75	.81	.76	.73	.77	.74	.71	.68
3.0	.80	.72	.65	.78	.71	.65	.74	.68	.63	.71	.66	.61	.68	.64	.60	.58
4.0	.71	.62	.55	.69	.61	.55	.66	.59	.54	.63	.57	.53	.61	.56	.52	.49
5.0	.63	.54	.48	.62	.54	.47	.59	.52	.46	.57	.51	.46	.55	.49	.45	.43
6.0	.57	.48	.42	.56	.47	.41	.54	.46	.41	.52	.45	.40	.50	.44	.39	.37
7.0	.51	.43	.37	.51	.42	.36	.49	.41	.36	.47	.40	.35	.45	.39	.35	.33
8.0	.47	.39	.33	.46	.38	.33	.44	.37	.32	.43	.36	.32	.42	.36	.31	.29
9.0	.43	.35	.29	.42	.35	.29	.41	.34	.29	.40	.33	.29	.38	.33	.28	.26
10.0	.40	.32	.27	.39	.32	.26	.38	.31	.26	.37	.30	.26	.36	.30	.26	.24



C Range: 0 - 360DEG  
 C Interval: 15.0DEG  
 Test Speed: HIGH  
 Temperature: 25.3°C  
 Operators: DAMIN  
 Test Date: 2024-01-29

γ Range: 0 - 180DEG  
 γ Interval: 1.0DEG  
 Test System: EVERFINE GO-2000B\_V1 SYSTEM V2.00.471  
 Humidity: 65.0%  
 Test Distance: 4.880m [K=1.0000]  
 Remarks:

WEC AND CCEC

NAME: LED Strip	TYPE: Indoor lighting	WEIGHT: 20g
SPEC.: LED	DIM.: 1000*12*5MM	SERIAL No.: 20240125013
MFR.: Hide-a-lite	SUR.: 1000*12MM	Shielding Angle:

$\rho_{CC}$	80%			70%			50%			30%			10%			0
$\rho_w$	50%	30%	10%	50%	30%	10%	50%	30%	10%	50%	30%	10%	50%	30%	10%	0
$\rho_{fc}$	20%			20%			20%			20%			20%			0
RCR	RCR:Room Cavity Ratio						Wall Exitance Coefficients (WEC)									
0.0																
1.0	.298	.169	.054	.290	.165	.053	.275	.158	.050	.261	.150	.048	.248	.144	.046	
2.0	.282	.154	.047	.275	.151	.047	.261	.145	.045	.249	.140	.044	.237	.134	.042	
3.0	.262	.140	.042	.256	.137	.041	.244	.132	.040	.233	.128	.039	.223	.123	.038	
4.0	.243	.126	.037	.237	.124	.037	.227	.120	.036	.217	.116	.035	.208	.113	.034	
5.0	.226	.115	.033	.221	.113	.033	.211	.110	.032	.202	.107	.032	.194	.104	.031	
6.0	.210	.105	.030	.205	.104	.030	.197	.101	.029	.189	.098	.029	.181	.095	.028	
7.0	.196	.097	.027	.192	.095	.027	.184	.093	.027	.177	.091	.026	.170	.088	.026	
8.0	.183	.089	.025	.179	.088	.025	.172	.086	.025	.166	.084	.024	.160	.082	.024	
9.0	.172	.083	.023	.168	.082	.023	.162	.080	.023	.156	.078	.022	.151	.076	.022	
10.0	.162	.078	.022	.159	.077	.021	.153	.075	.021	.147	.073	.021	.142	.072	.021	

$\rho_{CC}$	80%			70%			50%			30%			10%			0
$\rho_w$	50%	30%	10%	50%	30%	10%	50%	30%	10%	50%	30%	10%	50%	30%	10%	0
$\rho_{fc}$	20%			20%			20%			20%			20%			0
RCR	RCR:Room Cavity Ratio						Ceiling Cavity Exitance Coefficients (CCEC)									
0.0	.217	.217	.217	.185	.185	.185	.126	.126	.126	.073	.073	.073	.023	.023	.023	
1.0	.206	.183	.162	.176	.157	.139	.121	.108	.096	.069	.062	.056	.022	.020	.018	
2.0	.198	.159	.126	.169	.137	.109	.116	.095	.076	.067	.055	.045	.021	.018	.015	
3.0	.190	.141	.102	.163	.122	.089	.112	.085	.062	.065	.049	.037	.021	.016	.012	
4.0	.182	.128	.086	.156	.110	.075	.108	.077	.053	.062	.045	.031	.020	.015	.010	
5.0	.175	.117	.075	.150	.102	.065	.104	.071	.046	.060	.042	.027	.019	.014	.009	
6.0	.168	.109	.067	.144	.095	.058	.100	.066	.041	.058	.039	.024	.019	.013	.008	
7.0	.161	.102	.061	.139	.089	.053	.096	.062	.038	.056	.037	.022	.018	.012	.007	
8.0	.155	.097	.056	.134	.084	.049	.092	.059	.035	.054	.035	.021	.017	.011	.007	
9.0	.149	.092	.053	.129	.080	.046	.089	.056	.033	.052	.033	.019	.017	.011	.006	
10.0	.144	.087	.050	.124	.076	.044	.086	.053	.031	.050	.032	.019	.016	.010	.006	

C Range: 0 - 360DEG  
 C Interval: 15.0DEG  
 Test Speed: HIGH  
 Temperature: 25.3°C  
 Operators: DAMIN  
 Test Date: 2024-01-29

$\gamma$  Range: 0 - 180DEG  
 $\gamma$  Interval: 1.0DEG  
 Test System: EVERFINE GO-2000B\_V1 SYSTEM V2.00.471  
 Humidity: 65.0%  
 Test Distance: 4.880m [K=1.0000]  
 Remarks:

**UGR(Unified Glare Rating) Table**

NAME: LED Strip		TYPE: Indoor lighting					WEIGHT: 20g					
SPEC.: LED		DIM.: 1000*12*5MM					SERIAL No.: 20240125013					
MFR.: Hide-a-lite		SUR.: 1000*12MM					Shielding Angle:					
ceiling/cavity		0.7	0.7	0.5	0.5	0.3	0.7	0.7	0.5	0.5	0.3	
walls		0.5	0.3	0.5	0.3	0.3	0.5	0.3	0.5	0.3	0.3	
working plane		0.2	0.2	0.2	0.2	0.2	0.2	0.2	0.2	0.2	0.2	
Room dimensions		Viewed crosswise					Viewed endwise					
x = 2H y = 2H		23.9	25.3	24.2	25.6	25.8	24.1	25.5	24.4	25.8	26.0	
	3H	25.0	26.3	25.3	26.6	26.9	25.3	26.6	25.6	26.9	27.2	
	4H	25.2	26.5	25.6	26.8	27.1	25.6	26.9	26.0	27.2	27.5	
	6H	25.3	26.4	25.6	26.8	27.1	25.7	26.9	26.1	27.2	27.6	
	8H	25.3	26.4	25.7	26.8	27.1	25.7	26.9	26.1	27.2	27.6	
	12H	25.3	26.4	25.7	26.7	27.1	25.7	26.8	26.1	27.2	27.6	
	4H	2H	24.4	25.6	24.7	25.9	26.3	24.5	25.8	24.9	26.1	26.4
		3H	25.6	26.7	26.0	27.1	27.5	25.9	27.0	26.3	27.3	27.7
		4H	26.0	27.0	26.4	27.3	27.7	26.3	27.3	26.7	27.7	28.1
		6H	26.1	27.0	26.5	27.4	27.8	26.5	27.4	27.0	27.8	28.3
		8H	26.1	26.9	26.6	27.4	27.8	26.6	27.4	27.0	27.8	28.3
		12H	26.2	26.9	26.7	27.4	27.9	26.6	27.3	27.1	27.8	28.3
	8H	4H	26.1	26.9	26.5	27.3	27.8	26.4	27.2	26.9	27.7	28.1
		6H	26.3	27.0	26.8	27.4	27.9	26.7	27.4	27.2	27.9	28.4
		8H	26.4	27.0	26.9	27.5	28.0	26.8	27.4	27.3	27.9	28.4
		12H	26.5	27.1	27.1	27.6	28.1	26.9	27.4	27.4	27.9	28.5
	12H	4H	26.1	26.8	26.5	27.3	27.7	26.4	27.1	26.9	27.6	28.1
		6H	26.3	26.9	26.8	27.4	27.9	26.7	27.3	27.3	27.8	28.4
		8H	26.5	27.0	27.0	27.5	28.0	26.9	27.4	27.4	27.9	28.5
Variations with the observer position at spacings(CIE Pub.117):												
S = 1.0H		+ 0.2 / - 0.3					+ 0.2 / - 0.3					
	1.5H	+ 0.3 / - 0.5					+ 0.2 / - 0.4					
	2.0H	+ 0.4 / - 0.4					+ 0.3 / - 0.3					

CIE Pub.117, 932.7 lm Total Lamp Luminous Flux Correct (8log(F/F0) = -0.2)  
 Area: 0.012 m2

C Range: 0 - 360DEG  
 C Interval: 15.0DEG  
 Test Speed: HIGH  
 Temperature:25.3°C  
 Operators:DAMIN  
 Test Date:2024-01-29

γ Range: 0 - 180DEG  
 γ Interval: 1.0DEG  
 Test System:EVERFINE GO-2000B\_V1 SYSTEM V2.00.471  
 Humidity:65.0%  
 Test Distance:4.880m [K=1.0000]  
 Remarks:

**UTILIZATION FACTORS TABLE**

NAME: LED Strip	TYPE: Indoor lighting	WEIGHT: 20g
SPEC.: LED	DIM.: 1000*12*5MM	SERIAL No.: 20240125013
MFR.: Hide-a-lite	SUR.: 1000*12MM	Shielding Angle:

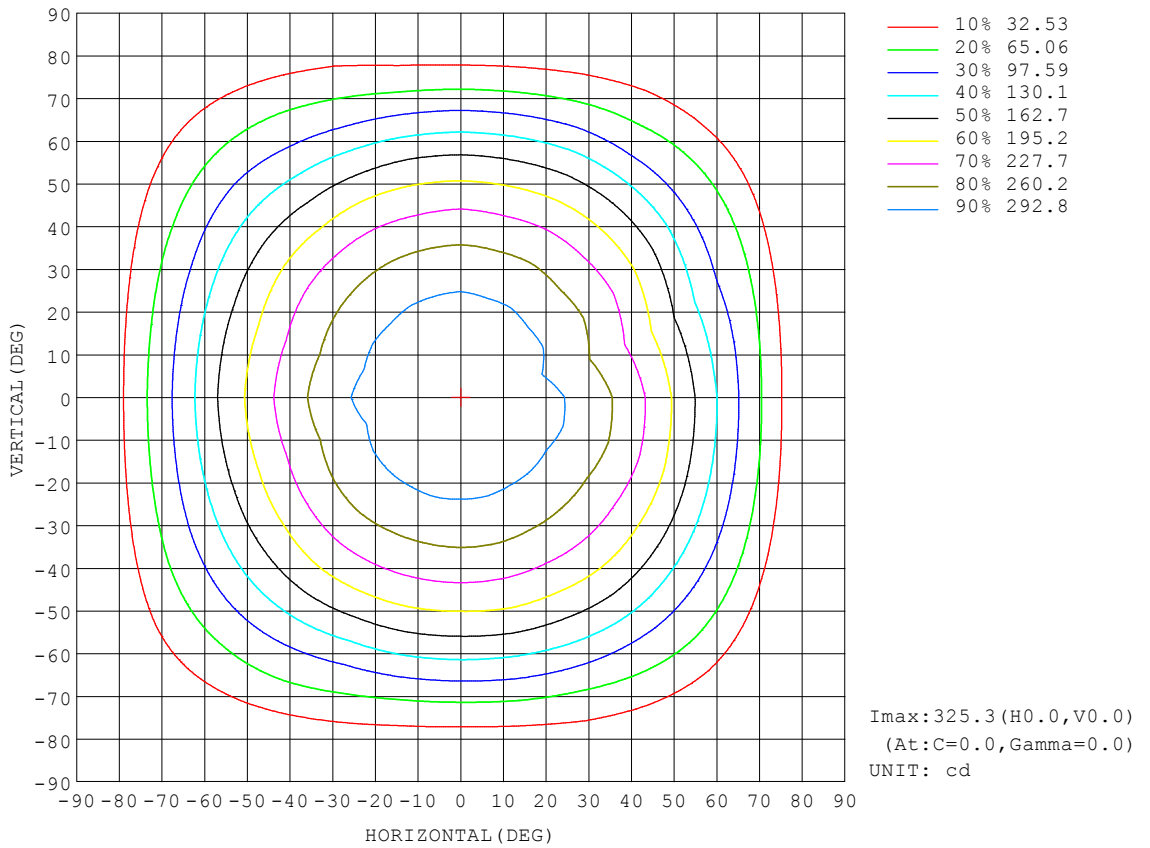
REFLECTANCE										
Ceiling	0.8	0.8	0.8	0.7	0.7	0.7	0.5	0.5	0.5	0
Walls	0.7	0.5	0.3	0.7	0.5	0.3	0.7	0.5	0.3	0
Working plane	0.2	0.2	0.2	0.2	0.2	0.2	0.2	0.2	0.2	0
ROOM INDEX	UTILIZATION FACTORS (PERCENT) $k(RI) \times RCR = 5$									
$k = 0.60$	57	45	39	56	45	38	55	45	38	32
0.80	67	56	48	66	55	48	64	54	48	41
1.00	76	65	57	74	64	57	72	65	56	49
1.25	83	72	65	81	72	65	78	70	64	56
1.50	88	78	71	86	77	70	83	75	69	61
2.00	95	86	80	93	85	79	89	82	77	69
2.50	98	91	85	96	89	84	92	86	81	73
3.00	102	95	89	99	93	88	95	90	86	77
4.00	106	100	95	103	98	94	98	94	91	81
5.00	108	103	99	105	101	97	100	97	94	84
ROOM INDEX	UF(total)									Direct
According to DIN EN 13032-2 2004			Suspended				SHRNOM = 1.25			

C Range: 0 - 360DEG  
 C Interval: 15.0DEG  
 Test Speed: HIGH  
 Temperature: 25.3°C  
 Operators: DAMIN  
 Test Date: 2024-01-29

$\gamma$  Range: 0 - 180DEG  
 $\gamma$  Interval: 1.0DEG  
 Test System: EVERFINE GO-2000B\_V1 SYSTEM V2.00.471  
 Humidity: 65.0%  
 Test Distance: 4.880m [K=1.0000]  
 Remarks:

**ISOCANDELA DIAGRAM**

NAME: LED Strip	TYPE: Indoor lighting	WEIGHT: 20g
SPEC.: LED	DIM.: 1000*12*5MM	SERIAL No.: 20240125013
MFR.: Hide-a-lite	SUR.: 1000*12MM	Shielding Angle:



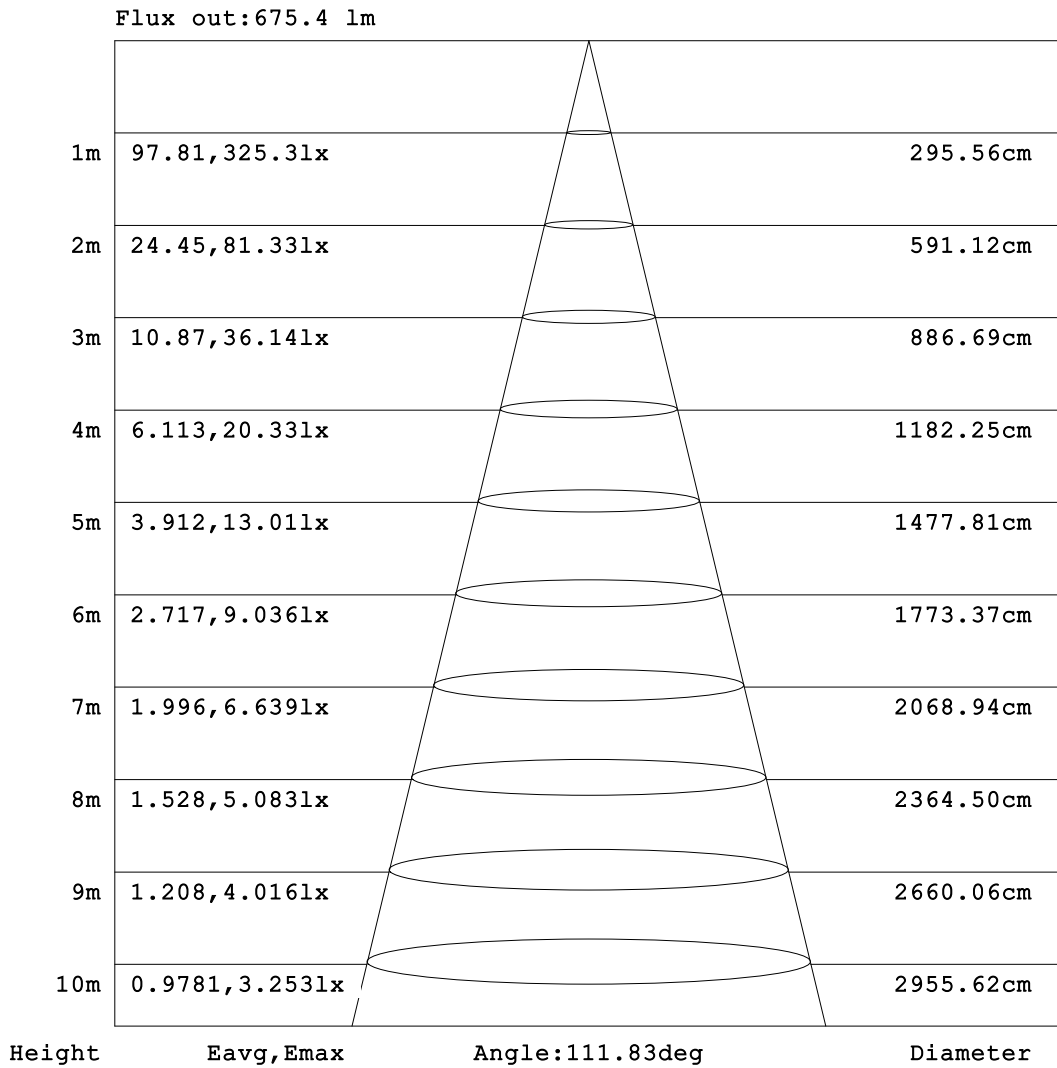
C Range: 0 - 360DEG  
 C Interval: 15.0DEG  
 Test Speed: HIGH  
 Temperature: 25.3°C  
 Operators: DAMIN  
 Test Date: 2024-01-29

γ Range: 0 - 180DEG  
 γ Interval: 1.0DEG  
 Test System: EVERFINE GO-2000B\_V1 SYSTEM V2.00.471  
 Humidity: 65.0%  
 Test Distance: 4.880m [K=1.0000]  
 Remarks:



**AAI Figure**

NAME: LED Strip	TYPE: Indoor lighting	WEIGHT: 20g
SPEC.: LED	DIM.: 1000*12*5MM	SERIAL No.: 20240125013
MFR.: Hide-a-lite	SUR.: 1000*12MM	Shielding Angle:



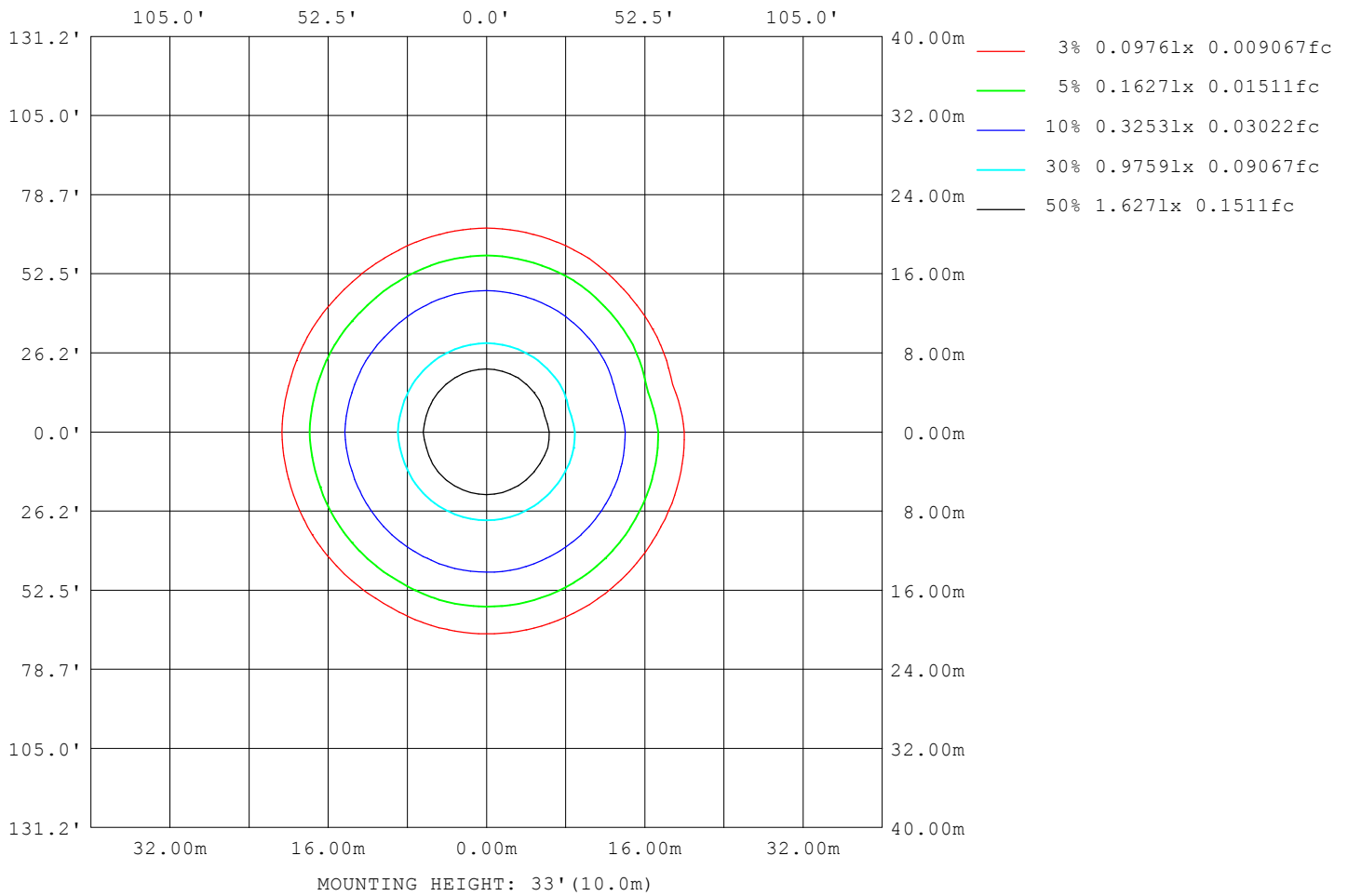
Note: The Curves indicate the illuminated area and the average illumination when the luminaire is at different distance.

C Range: 0 - 360DEG  
 C Interval: 15.0DEG  
 Test Speed: HIGH  
 Temperature: 25.3°C  
 Operators: DAMIN  
 Test Date: 2024-01-29

γ Range: 0 - 180DEG  
 γ Interval: 1.0DEG  
 Test System: EVERFINE GO-2000B\_V1 SYSTEM V2.00.471  
 Humidity: 65.0%  
 Test Distance: 4.880m [K=1.0000]  
 Remarks:

**ISOLUX DIAGRAM**

NAME: LED Strip	TYPE: Indoor lighting	WEIGHT: 20g
SPEC.: LED	DIM.: 1000*12*5MM	SERIAL No.: 20240125013
MFR.: Hide-a-lite	SUR.: 1000*12MM	Shielding Angle:



C Range: 0 - 360DEG  
 C Interval: 15.0DEG  
 Test Speed: HIGH  
 Temperature: 25.3°C  
 Operators: DAMIN  
 Test Date: 2024-01-29

γ Range: 0 - 180DEG  
 γ Interval: 1.0DEG  
 Test System: EVERFINE GO-2000B\_V1 SYSTEM V2.00.471  
 Humidity: 65.0%  
 Test Distance: 4.880m [K=1.0000]  
 Remarks:

LED Avg.L Report

NAME: LED Strip	TYPE: Indoor lighting	WEIGHT: 20g
SPEC.: LED	DIM.: 1000*12*5MM	SERIAL No.: 20240125013
MFR.: Hide-a-lite	SUR.: 1000*12MM	Shielding Angle:

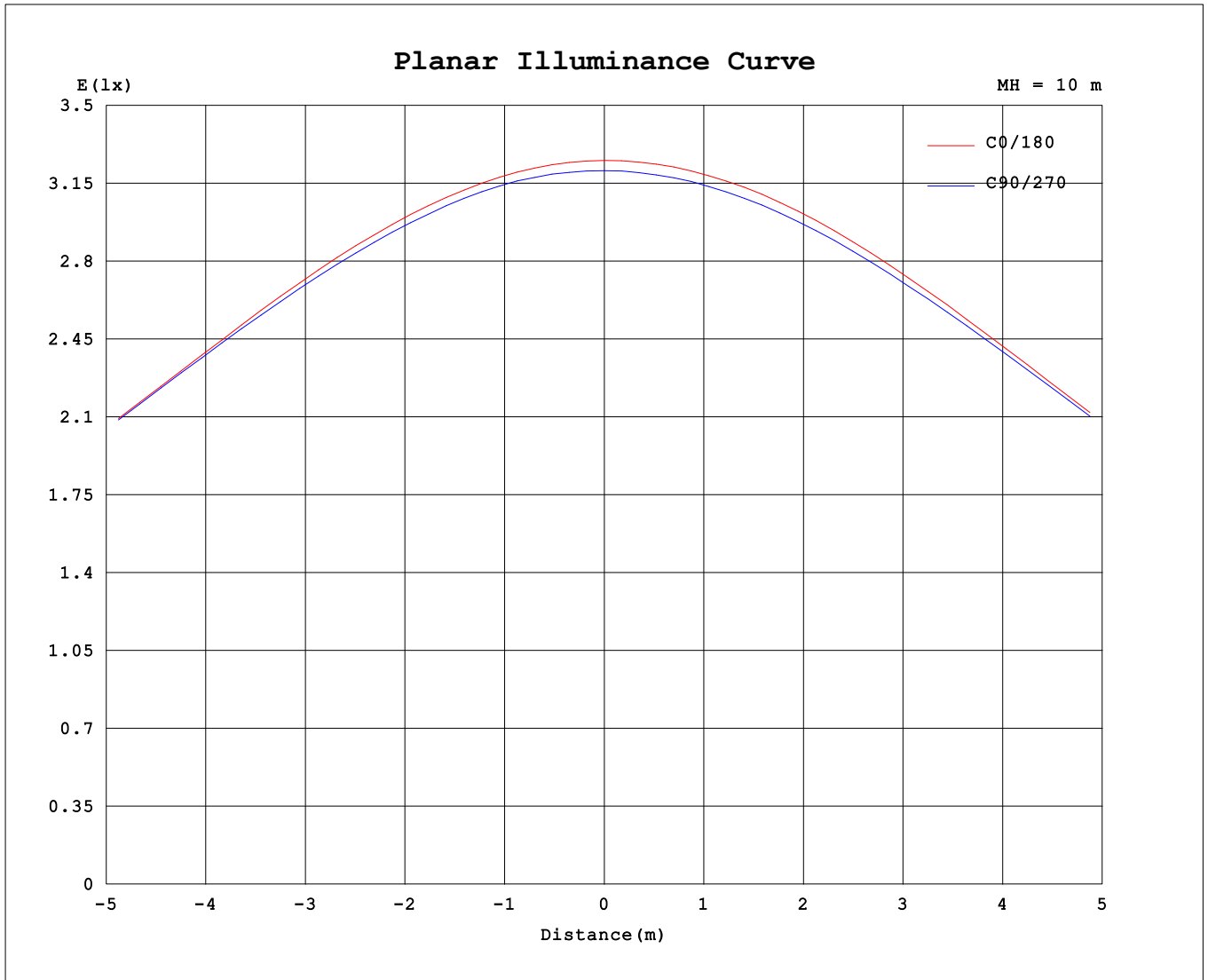
AvgL	cd/m2
L_0~180 (65) av	20863
L_0~180 (75) av	14371
L_0~180 (85) av	12694
L_90~270 (65) av	21579
L_90~270 (75) av	14641
L_90~270 (85) av	7364
L_45 (65) av	20324
L_45 (75) av	15357
L_45 (85) av	15323

Standard: GB/T 29293-2012

C Range: 0 - 360DEG  
 C Interval: 15.0DEG  
 Test Speed: HIGH  
 Temperature:25.3°C  
 Operators:DAMIN  
 Test Date:2024-01-29

γ Range: 0 - 180DEG  
 γ Interval: 1.0DEG  
 Test System:EVERFINE GO-2000B\_V1 SYSTEM V2.00.471  
 Humidity:65.0%  
 Test Distance:4.880m [K=1.0000]  
 Remarks:

**Planar Illuminance Curve**



C Range: 0 - 360DEG  
 C Interval: 15.0DEG  
 Test Speed: HIGH  
 Temperature: 25.3°C  
 Operators: DAMIN  
 Test Date: 2024-01-29

γ Range: 0 - 180DEG  
 γ Interval: 1.0DEG  
 Test System: EVERFINE GO-2000B\_V1 SYSTEM V2.00.471  
 Humidity: 65.0%  
 Test Distance: 4.880m [K=1.0000]  
 Remarks:

LUMINOUS DISTRIBUTION INTENSITY DATA

NAME: LED Strip	TYPE: Indoor lighting	WEIGHT: 20g
SPEC.: LED	DIM.: 1000*12*5MM	SERIAL No.: 20240125013
MFR.: Hide-a-lite	SUR.: 1000*12MM	Shielding Angle:

Table--1

UNIT: cd

C (DEG) \ γ (DEG)	0	15	30	45	60	75	90	105	120	135	150	165	180	195	210	225	240	255	270
0	325	324	320	320	321	321	321	321	320	320	320	317	325	324	320	320	321	321	321
5	324	323	319	319	319	320	320	319	319	320	320	316	324	322	318	319	320	319	319
10	319	320	315	315	315	316	315	316	315	316	316	313	321	317	315	315	316	316	316
15	313	313	309	308	309	310	309	310	309	310	310	307	315	311	309	310	310	311	310
20	303	304	300	299	299	301	301	301	301	301	301	298	306	301	301	301	302	302	302
25	291	292	289	289	290	290	290	290	290	291	290	288	295	289	290	290	291	291	292
30	277	279	275	274	276	276	277	277	277	278	277	274	280	275	276	276	278	278	279
35	262	264	259	258	259	261	261	260	260	261	260	258	264	258	259	260	261	262	263
40	243	245	240	239	241	242	242	242	241	242	240	239	244	239	241	241	243	243	245
45	219	221	218	219	219	220	220	220	220	219	217	217	222	217	219	219	221	222	224
50	192	194	193	194	194	197	196	196	195	195	193	193	198	193	194	193	196	198	199
55	162	164	165	167	167	169	168	168	166	167	167	168	173	168	168	165	168	172	172
60	131	132	133	136	137	139	139	138	135	137	139	140	145	141	139	137	138	142	144
65	98.5	101	101	102	105	107	107	106	103	105	109	111	113	110	110	107	107	110	112
70	68.5	71.6	72.6	73.0	73.7	75.2	74.2	73.7	74.2	78.4	80.8	84.1	84.2	81.2	81.7	80.2	78.5	77.9	79.1
75	33.5	36.9	41.1	43.0	43.6	44.5	43.5	44.2	47.8	50.8	51.4	54.6	55.7	53.9	54.1	53.6	51.9	48.2	47.4
80	16.3	17.7	20.2	23.6	24.5	21.7	20.7	21.7	24.6	24.6	26.2	28.8	28.0	28.2	28.5	29.2	29.2	24.7	23.0
85	11.8	12.6	14.6	16.7	12.8	8.80	7.14	9.37	15.2	16.2	15.8	17.1	14.7	15.0	16.2	16.5	15.1	10.6	8.27
90	12.3	12.9	13.8	12.3	6.81	3.54	1.43	3.82	8.93	14.8	14.7	13.6	11.8	12.2	13.7	12.5	9.33	4.17	1.53
95	12.6	12.9	12.7	9.45	5.39	3.16	0.99	3.00	5.65	12.4	15.1	14.4	12.9	12.6	12.9	10.9	6.56	2.98	1.00
100	12.1	12.0	10.7	7.44	5.12	3.01	1.10	2.62	4.48	8.82	13.1	13.9	12.5	12.0	11.7	9.25	4.87	2.48	1.14
105	9.86	9.77	8.66	6.42	4.99	2.99	1.29	2.40	4.29	6.33	10.3	11.8	10.9	10.6	9.94	6.91	4.43	2.26	1.34
110	8.27	8.19	7.16	5.49	4.51	2.78	1.50	2.07	3.79	4.78	7.61	9.54	9.21	9.02	7.74	5.21	3.85	1.95	1.55
115	7.19	7.06	6.20	4.91	3.84	2.35	1.70	1.88	3.30	4.10	5.36	7.32	7.40	7.04	5.87	4.23	3.32	1.87	1.76
120	6.45	6.29	5.47	4.36	3.38	2.22	1.91	1.95	2.90	3.80	4.31	5.32	5.69	5.42	4.62	3.87	2.93	1.98	1.98
125	5.96	5.75	4.99	4.10	3.20	2.25	2.10	2.11	2.64	3.61	4.08	4.51	4.81	4.63	4.29	3.68	2.67	2.16	2.18
130	5.79	5.60	4.72	3.96	3.13	2.37	2.29	2.29	2.54	3.38	3.97	4.29	4.63	4.50	4.18	3.46	2.62	2.34	2.37
135	5.69	5.49	4.50	3.83	3.00	2.51	2.48	2.48	2.56	3.09	3.74	4.08	4.53	4.38	3.93	3.22	2.66	2.54	2.55
140	5.48	4.93	4.24	3.64	2.92	2.67	2.68	2.69	2.68	2.91	3.36	3.72	4.14	3.99	3.55	3.06	2.77	2.73	2.75
145	5.04	4.33	3.95	3.38	2.95	2.86	2.89	2.88	2.86	2.90	3.11	3.31	3.68	3.58	3.28	3.04	2.94	2.92	2.94
150	4.48	3.91	3.61	3.24	3.10	3.07	3.08	3.07	3.05	3.02	3.06	3.11	3.39	3.34	3.20	3.13	3.11	3.10	3.12
155	3.96	3.57	3.43	3.28	3.26	3.24	3.26	3.26	3.23	3.20	3.16	3.12	3.33	3.30	3.27	3.29	3.28	3.27	3.29
160	3.70	3.47	3.43	3.43	3.41	3.39	3.42	3.42	3.40	3.37	3.34	3.28	3.44	3.42	3.41	3.45	3.44	3.43	3.44
165	3.63	3.56	3.58	3.57	3.57	3.55	3.56	3.56	3.55	3.53	3.51	3.47	3.61	3.58	3.56	3.59	3.59	3.57	3.58
170	3.74	3.69	3.69	3.69	3.69	3.68	3.68	3.68	3.68	3.67	3.65	3.63	3.73	3.70	3.68	3.72	3.71	3.68	3.69
175	3.82	3.78	3.77	3.79	3.79	3.77	3.79	3.78	3.79	3.78	3.77	3.70	3.81	3.79	3.77	3.81	3.81	3.77	3.78
180	3.88	3.82	3.83	3.85	3.85	3.83	3.84	3.83	3.84	3.83	3.83	3.79	3.87	3.83	3.82	3.85	3.85	3.82	3.83

C Range: 0 - 360DEG  
 C Interval: 15.0DEG  
 Test Speed: HIGH  
 Temperature:25.3°C  
 Operators:DAMIN  
 Test Date:2024-01-29

γ Range: 0 - 180DEG  
 γ Interval: 1.0DEG  
 Test System:EVERFINE GO-2000B\_V1 SYSTEM V2.00.471  
 Humidity:65.0%  
 Test Distance:4.880m [K=1.0000]  
 Remarks:

LUMINOUS DISTRIBUTION INTENSITY DATA

NAME: LED Strip	TYPE: Indoor lighting	WEIGHT: 20g
SPEC.: LED	DIM.: 1000*12*5MM	SERIAL No.: 20240125013
MFR.: Hide-a-lite	SUR.: 1000*12MM	Shielding Angle:

Table--2

UNIT: cd

C (DEG) \ γ (DEG)	285	300	315	330	345														
0	321	320	320	320	317														
5	319	319	319	318	315														
10	316	315	315	315	310														
15	310	310	309	309	302														
20	301	301	299	299	292														
25	290	290	287	286	279														
30	277	277	274	272	265														
35	261	260	256	256	248														
40	243	242	239	238	228														
45	220	220	217	215	205														
50	197	196	193	189	178														
55	170	169	164	159	149														
60	141	139	132	127	115														
65	110	107	97.9	94.2	92.7														
70	77.4	74.8	68.9	68.5	68.7														
75	46.5	45.1	43.3	38.2	36.2														
80	23.2	23.1	20.9	18.9	16.6														
85	9.14	11.8	14.7	13.0	10.7														
90	3.44	7.02	11.7	11.7	11.0														
95	2.67	4.49	9.29	12.1	12.2														
100	2.76	4.75	7.39	8.38	11.1														
105	2.76	4.78	6.35	8.61	9.73														
110	2.71	4.55	5.52	7.17	7.18														
115	2.32	3.72	5.08	6.31	6.99														
120	2.25	3.35	4.43	5.72	6.38														
125	2.32	3.20	4.11	4.97	5.85														
130	2.45	3.06	3.88	4.68	5.67														
135	2.61	3.04	3.63	4.43	5.52														
140	2.78	3.03	3.55	4.07	4.86														
145	2.97	3.07	3.43	3.81	4.36														
150	3.15	3.19	3.38	3.64	3.95														
155	3.31	3.33	3.37	3.50	3.60														
160	3.46	3.44	3.48	3.49	3.51														
165	3.58	3.59	3.58	3.59	3.54														
170	3.71	3.69	3.70	3.69	3.64														
175	3.78	3.78	3.79	3.77	3.73														
180	3.83	3.84	3.84	3.83	3.77														

C Range: 0 - 360DEG  
 C Interval: 15.0DEG  
 Test Speed: HIGH  
 Temperature:25.3°C  
 Operators:DAMIN  
 Test Date:2024-01-29

γ Range: 0 - 180DEG  
 γ Interval: 1.0DEG  
 Test System:EVERFINE GO-2000B\_V1 SYSTEM V2.00.471  
 Humidity:65.0%  
 Test Distance:4.880m [K=1.0000]  
 Remarks: