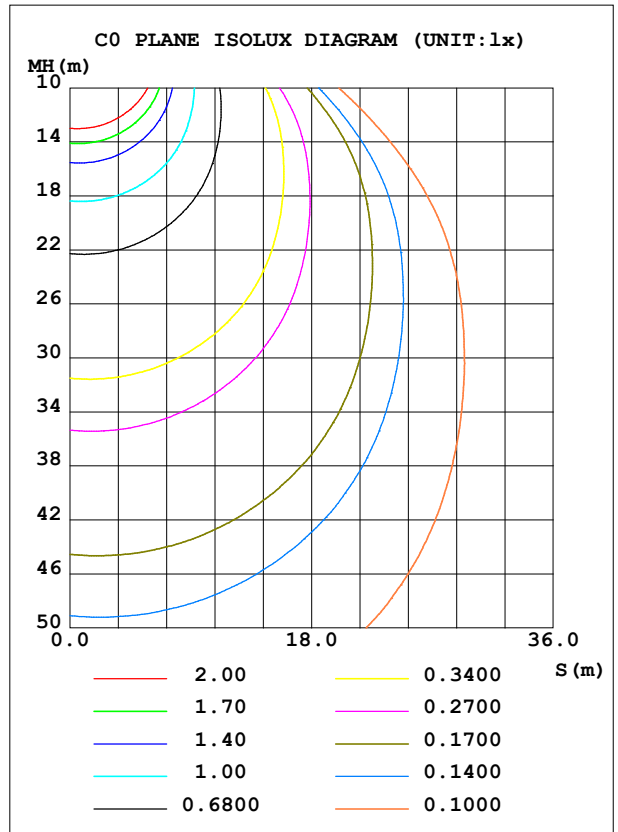
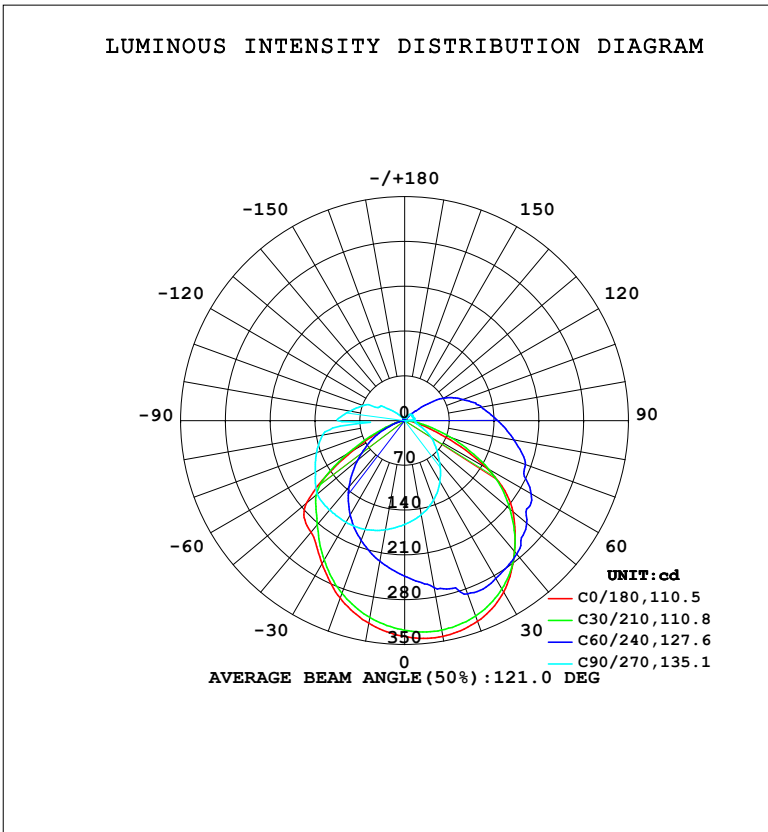


**LUMINAIRE PHOTOMETRIC TEST REPORT**

NAME: LED Strip	TYPE: Indoor lighting	WEIGHT: 75g
SPEC.: LED	DIM.: 1000*10*5MM	SERIAL No.: 20240709001
MFR.: EVERFINE	SUR.: 1000*10MM	Shielding Angle:

DATA OF LAMP		PHOTOMETRIC DATA			
MODELHVFLST6WUM-XX-US-HR(BF)		Imax (cd)	342.4	S/MH (C0/180)	1.15
NOMINAL POWER (W)	12.2129	LOR (%)	100.0	S/MH (C90/270)	1.70
RATED VOLTAGE (V)	AC 120V	TOTAL FLUX (lm)	789.94	$\eta$ UP, DN (C0-180)	6.8, 39.2
NOMINAL FLUX (lm)	789.942	CIE CLASS	SEMI-D.	$\eta$ UP, DN (C180-360)	7.3, 46.6
LAMPS INSIDE	1	$\eta$ up (%)	14.1	CIBSE SHR NOM	0.50
TEST VOLTAGE (V)	AC 120V	$\eta$ down (%)	85.9	CIBSE SHR MAX	0.60



C Range: 0 - 360DEG  
 C Interval: 15.0DEG  
 Test Speed: HIGH  
 Temperature: 25.3°C  
 Operators: DAMIN  
 Test Date: 2024-07-15

$\gamma$  Range: 0 - 180DEG  
 $\gamma$  Interval: 1.0DEG  
 Test System: EVERFINE GO-2000B\_V1 SYSTEM V2.00.471  
 Humidity: 65.0%  
 Test Distance: 4.880m [K=1.0000]  
 Remarks:

ZONAL FLUX DIAGRAM

ZONAL FLUX DIAGRAM:

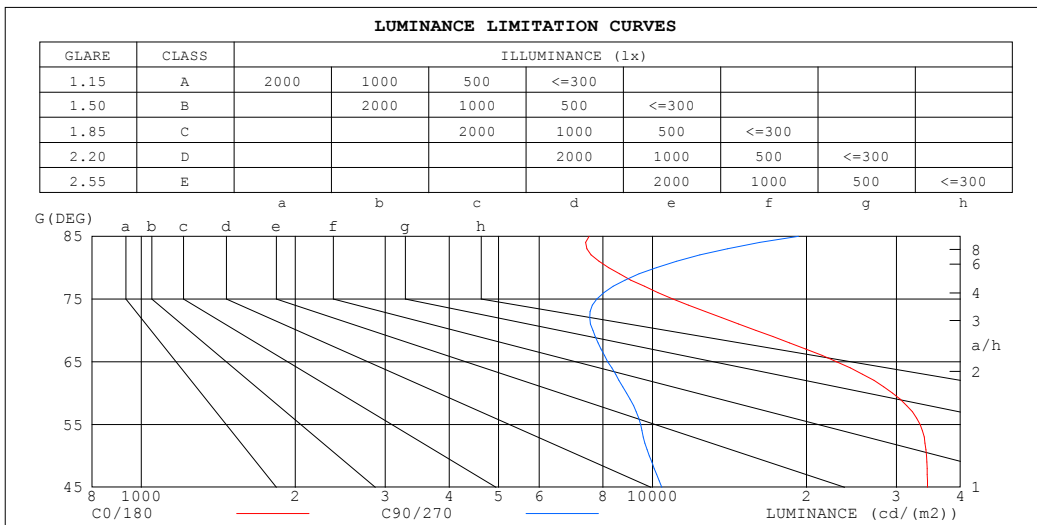
$\gamma$	C0	C45	C90	C135	C180	C225	C270	C315	$\gamma$	$\Phi$ zone	$\Phi$ total	%lum,lamp
10	342.4	327.5	149.5	109.6	321.6	305.5	173.1	138.2	0- 10	20.08	20.08	2.54,2.54
20	333.4	322.9	132.2	87.13	295.1	278.5	181.1	142.5	10- 20	57.80	77.88	9.86,9.86
30	309.5	305.5	110.4	62.15	258.4	240.3	183.5	140.0	20- 30	88.32	166.2	21,21
40	267.3	273.9	85.39	40.37	227.9	194.5	182.4	131.7	30- 40	107.0	273.2	34.6,34.6
50	220.9	223.3	63.31	25.30	199.8	153.0	178.4	112.7	40- 50	115.3	388.5	49.2,49.2
60	147.5	156.2	44.48	14.13	93.14	103.9	161.2	107.4	50- 60	107.8	496.3	62.8,62.8
70	54.49	86.95	26.14	10.38	26.86	37.61	146.8	93.15	60- 70	81.95	578.3	73.2,73.2
80	14.26	35.79	17.68	12.52	6.842	8.802	130.4	82.20	70- 80	57.76	636.0	80.5,80.5
90	2.867	18.57	15.86	16.86	1.589	1.693	104.1	60.02	80- 90	42.43	678.5	85.9,85.9
100	1.522	11.36	15.51	20.88	1.319	1.521	86.02	20.60	90-100	34.79	713.2	90.3,90.3
110	1.472	5.942	14.48	25.10	1.606	1.862	69.54	8.513	100-110	26.70	739.9	93.7,93.7
120	1.728	1.547	13.89	28.97	2.051	2.224	44.78	5.968	110-120	19.08	759.0	96.1,96.1
130	2.087	1.865	14.58	18.22	2.473	2.594	22.93	5.379	120-130	12.70	771.7	97.7,97.7
140	2.463	2.246	12.91	27.71	2.881	2.946	7.878	6.317	130-140	7.815	779.5	98.7,98.7
150	2.922	2.710	8.266	24.57	3.304	3.299	6.788	8.333	140-150	4.900	784.4	99.3,99.3
160	3.411	3.224	5.096	22.73	3.672	3.586	6.008	11.78	150-160	3.049	787.5	99.7,99.7
170	3.705	3.582	4.500	7.702	3.950	3.792	5.057	15.38	160-170	1.845	789.3	99.9,99.9
180	3.920	3.849	4.675	13.44	3.929	3.848	4.727	14.27	170-180	0.6065	789.9	100,100
DEG	LUMINOUS INTENSITY:cd									UNIT:lm		

C Range: 0 - 360DEG  
 C Interval: 15.0DEG  
 Test Speed: HIGH  
 Temperature:25.3°C  
 Operators:DAMIN  
 Test Date:2024-07-15

$\gamma$  Range: 0 - 180DEG  
 $\gamma$  Interval: 1.0DEG  
 Test System:EVERFINE GO-2000B\_V1 SYSTEM V2.00.471  
 Humidity:65.0%  
 Test Distance:4.880m [K=1.0000]  
 Remarks:

**LUMINANCE LIMITATION CURVES**

<b>NAME:</b> LED Strip	<b>TYPE:</b> Indoor lighting	<b>WEIGHT:</b> 75g
<b>SPEC.:</b> LED	<b>DIM.:</b> 1000*10*5MM	<b>SERIAL No.:</b> 20240709001
<b>MFR.:</b> EVERFINE	<b>SUR.:</b> 1000*10MM	<b>Shielding Angle:</b>



LUMINANCE cd/ (m2)		
G (DEG)	C0/180	C90/270
85	7520	19290
80	8210	10179
75	10963	7785
70	15931	7644
65	22902	8173
60	29500	8896
55	33374	9473
50	34359	9850
45	34515	10423

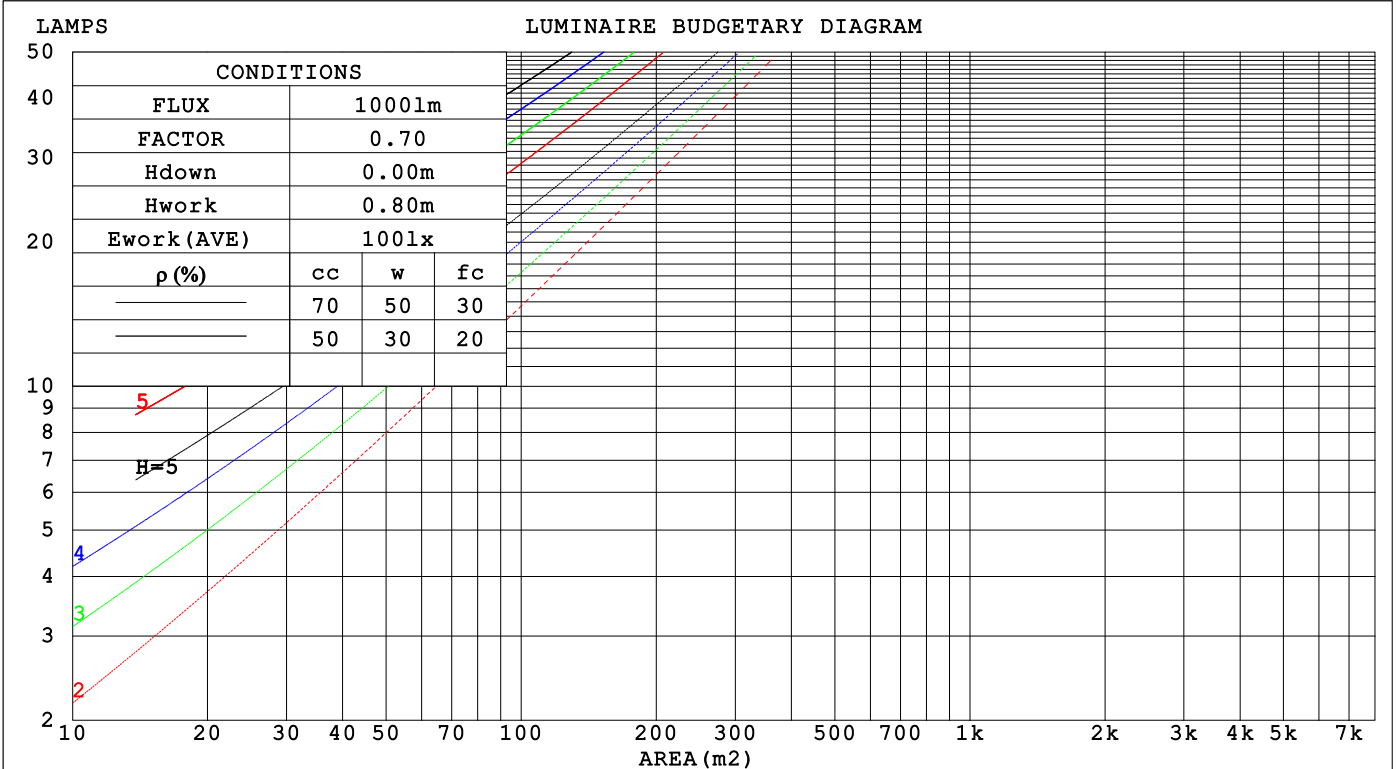
C Range: 0 - 360DEG  
 C Interval: 15.0DEG  
 Test Speed: HIGH  
 Temperature: 25.3°C  
 Operators: DAMIN  
 Test Date: 2024-07-15

γ Range: 0 - 180DEG  
 γ Interval: 1.0DEG  
 Test System: EVERFINE GO-2000B\_V1 SYSTEM V2.00.471  
 Humidity: 65.0%  
 Test Distance: 4.880m [K=1.0000]  
 Remarks:

**CU AND LUMINAIRE BUDGETARY ESTIMATE DIAGRAM**

NAME: LED Strip	TYPE: Indoor lighting	WEIGHT: 75g
SPEC.: LED	DIM.: 1000*10*5MM	SERIAL No.: 20240709001
MFR.: EVERFINE	SUR.: 1000*10MM	Shielding Angle:

pcc	80%			70%			50%			30%			10%			0
	50%	30%	10%	50%	30%	10%	50%	30%	10%	50%	30%	10%	50%	30%	10%	0
pw																
pfc	20%			20%			20%			20%			20%			0
RCR	RCR:Room Cavity Ratio      Coefficients of Utilization(CU)															
0.0	1.16	1.16	1.16	1.11	1.11	1.11	1.03	1.03	1.03	.96	.96	.96	.89	.89	.89	.86
1.0	.98	.94	.89	.95	.90	.86	.88	.84	.81	.82	.79	.76	.76	.74	.71	.68
2.0	.85	.78	.72	.82	.75	.70	.76	.71	.66	.71	.66	.62	.66	.62	.59	.56
3.0	.74	.66	.59	.72	.64	.58	.67	.60	.55	.62	.57	.52	.58	.53	.49	.47
4.0	.66	.57	.50	.63	.55	.49	.59	.52	.46	.55	.49	.44	.51	.46	.42	.40
5.0	.58	.49	.43	.56	.48	.42	.53	.45	.40	.49	.43	.38	.46	.41	.37	.34
6.0	.52	.43	.37	.51	.42	.36	.48	.40	.35	.45	.38	.33	.42	.36	.32	.30
7.0	.47	.39	.32	.46	.38	.32	.43	.36	.31	.40	.34	.29	.38	.32	.28	.26
8.0	.43	.35	.29	.42	.34	.28	.39	.32	.27	.37	.31	.26	.35	.29	.25	.23
9.0	.40	.31	.26	.38	.31	.25	.36	.29	.24	.34	.28	.24	.32	.27	.23	.21
10.0	.36	.28	.23	.35	.28	.23	.33	.27	.22	.32	.26	.21	.30	.24	.21	.19



C Range: 0 - 360DEG  
 C Interval: 15.0DEG  
 Test Speed: HIGH  
 Temperature: 25.3°C  
 Operators: DAMIN  
 Test Date: 2024-07-15

γ Range: 0 - 180DEG  
 γ Interval: 1.0DEG  
 Test System: EVERFINE GO-2000B\_V1 SYSTEM V2.00.471  
 Humidity: 65.0%  
 Test Distance: 4.880m [K=1.0000]  
 Remarks:

WEC AND CCEC

NAME: LED Strip	TYPE: Indoor lighting	WEIGHT: 75g
SPEC.: LED	DIM.: 1000*10*5MM	SERIAL No.: 20240709001
MFR.: EVERFINE	SUR.: 1000*10MM	Shielding Angle:

$\rho_{cc}$	80%			70%			50%			30%			10%			0
$\rho_w$	50%	30%	10%	50%	30%	10%	50%	30%	10%	50%	30%	10%	50%	30%	10%	0
$\rho_{fc}$	20%			20%			20%			20%			20%			0
RCR	RCR:Room Cavity Ratio						Wall Exitance Coefficients(WEC)									
0.0																
1.0	.348	.198	.063	.337	.192	.061	.315	.181	.058	.296	.171	.055	.278	.161	.052	
2.0	.310	.170	.052	.300	.165	.051	.280	.156	.048	.263	.147	.046	.246	.139	.044	
3.0	.280	.149	.045	.271	.145	.044	.253	.137	.042	.237	.130	.040	.222	.123	.038	
4.0	.255	.132	.039	.246	.129	.038	.231	.122	.037	.216	.116	.035	.203	.110	.034	
5.0	.234	.119	.034	.226	.116	.034	.212	.110	.032	.198	.105	.031	.186	.099	.030	
6.0	.215	.108	.031	.208	.105	.030	.196	.100	.029	.183	.095	.028	.172	.091	.027	
7.0	.200	.099	.028	.193	.096	.027	.182	.092	.026	.170	.087	.025	.160	.083	.024	
8.0	.186	.091	.026	.180	.089	.025	.169	.085	.024	.159	.081	.023	.150	.077	.022	
9.0	.174	.084	.023	.168	.082	.023	.159	.078	.022	.149	.075	.021	.140	.071	.021	
10.0	.163	.078	.022	.158	.076	.021	.149	.073	.021	.140	.070	.020	.132	.066	.019	

$\rho_{cc}$	80%			70%			50%			30%			10%			0
$\rho_w$	50%	30%	10%	50%	30%	10%	50%	30%	10%	50%	30%	10%	50%	30%	10%	0
$\rho_{fc}$	20%			20%			20%			20%			20%			0
RCR	RCR:Room Cavity Ratio						Ceiling Cavity Exitance Coefficients(CCEC)									
0.0	.298	.298	.298	.255	.255	.255	.174	.174	.174	.100	.100	.100	.032	.032	.032	
1.0	.291	.264	.240	.249	.227	.206	.171	.156	.143	.098	.090	.083	.031	.029	.027	
2.0	.284	.241	.205	.243	.207	.177	.167	.144	.124	.096	.083	.072	.031	.027	.024	
3.0	.276	.224	.183	.237	.193	.158	.163	.134	.111	.094	.078	.065	.030	.025	.021	
4.0	.268	.211	.168	.230	.183	.146	.158	.127	.103	.092	.075	.061	.029	.024	.020	
5.0	.261	.201	.157	.224	.174	.137	.154	.122	.097	.089	.071	.057	.029	.023	.019	
6.0	.254	.193	.150	.218	.167	.130	.150	.117	.092	.087	.069	.055	.028	.023	.018	
7.0	.247	.187	.144	.212	.162	.126	.147	.113	.089	.085	.067	.053	.028	.022	.018	
8.0	.240	.181	.140	.207	.157	.122	.143	.110	.087	.083	.065	.052	.027	.021	.017	
9.0	.234	.176	.137	.202	.153	.119	.140	.107	.085	.081	.063	.051	.026	.021	.017	
10.0	.229	.172	.134	.197	.149	.117	.137	.105	.083	.080	.062	.050	.026	.020	.016	

C Range: 0 - 360DEG  
 C Interval: 15.0DEG  
 Test Speed: HIGH  
 Temperature:25.3°C  
 Operators:DAMIN  
 Test Date:2024-07-15

$\gamma$  Range: 0 - 180DEG  
 $\gamma$  Interval: 1.0DEG  
 Test System:EVERFINE GO-2000B\_V1 SYSTEM V2.00.471  
 Humidity:65.0%  
 Test Distance:4.880m [K=1.0000]  
 Remarks:

**UGR(Unified Glare Rating) Table**

NAME: LED Strip		TYPE: Indoor lighting					WEIGHT: 75g				
SPEC.: LED		DIM.: 1000*10*5MM					SERIAL No.: 20240709001				
MFR.: EVERFINE		SUR.: 1000*10MM					Shielding Angle:				
ceiling/cavity		0.7	0.7	0.5	0.5	0.3	0.7	0.7	0.5	0.5	0.3
walls		0.5	0.3	0.5	0.3	0.3	0.5	0.3	0.5	0.3	0.3
working plane		0.2	0.2	0.2	0.2	0.2	0.2	0.2	0.2	0.2	0.2
Room dimensions		Viewed crosswise					Viewed endwise				
x = 2H y = 2H		26.4	27.7	26.8	28.2	28.7	24.4	25.8	24.9	26.2	26.7
	3H	27.1	28.4	27.6	28.8	29.3	24.7	26.0	25.2	26.5	27.0
	4H	27.2	28.4	27.7	28.9	29.4	24.7	25.9	25.2	26.4	26.9
	6H	27.2	28.3	27.7	28.8	29.4	24.7	25.8	25.2	26.3	26.9
	8H	27.2	28.3	27.7	28.8	29.4	24.7	25.8	25.3	26.3	26.9
	12H	27.1	28.2	27.7	28.7	29.3	24.9	25.9	25.4	26.4	27.0
	4H 2H	27.0	28.2	27.5	28.7	29.2	25.9	27.1	26.4	27.6	28.2
	3H	27.8	28.9	28.4	29.4	30.0	28.1	29.2	28.7	29.7	30.3
	4H	28.0	29.0	28.6	29.5	30.2	29.0	29.9	29.5	30.5	31.1
	6H	28.1	28.9	28.7	29.5	30.2	29.2	30.0	29.8	30.6	31.3
	8H	28.1	28.9	28.7	29.5	30.2	29.1	29.9	29.8	30.5	31.2
	12H	28.1	28.8	28.7	29.4	30.1	29.2	29.9	29.8	30.5	31.2
	8H 4H	28.7	29.5	29.3	30.1	30.8	29.7	30.5	30.4	31.1	31.8
	6H	28.9	29.5	29.5	30.2	30.9	31.6	32.2	32.2	32.9	33.6
	8H	28.9	29.5	29.6	30.2	30.9	32.3	32.9	33.0	33.5	34.3
	12H	28.9	29.4	29.6	30.1	30.9	32.5	33.0	33.2	33.7	34.4
	12H 4H	29.2	30.0	29.9	30.6	31.3	29.7	30.4	30.3	31.1	31.8
	6H	29.5	30.1	30.1	30.7	31.5	31.7	32.3	32.3	32.9	33.6
	8H	29.5	30.1	30.2	30.7	31.5	32.9	33.4	33.6	34.1	34.9
Variations with the observer position at spacings(CIE Pub.117):											
S = 1.0H		+ 0.2 / - 0.2					+ 0.2 / - 0.1				
1.5H		+ 0.3 / - 0.4					+ 0.4 / - 0.2				
2.0H		+ 0.5 / - 0.6					+ 0.9 / - 0.4				

CIE Pub.117, 789.9 lm Total Lamp Luminous Flux Correct (8log(F/F0) = -0.8)  
 Area: 0.01 m2

C Range: 0 - 360DEG  
 C Interval: 15.0DEG  
 Test Speed: HIGH  
 Temperature:25.3°C  
 Operators:DAMIN  
 Test Date:2024-07-15

γ Range: 0 - 180DEG  
 γ Interval: 1.0DEG  
 Test System:EVERFINE GO-2000B\_V1 SYSTEM V2.00.471  
 Humidity:65.0%  
 Test Distance:4.880m [K=1.0000]  
 Remarks:

**UTILIZATION FACTORS TABLE**

NAME: LED Strip	TYPE: Indoor lighting	WEIGHT: 75g
SPEC.: LED	DIM.: 1000*10*5MM	SERIAL No.: 20240709001
MFR.: EVERFINE	SUR.: 1000*10MM	Shielding Angle:

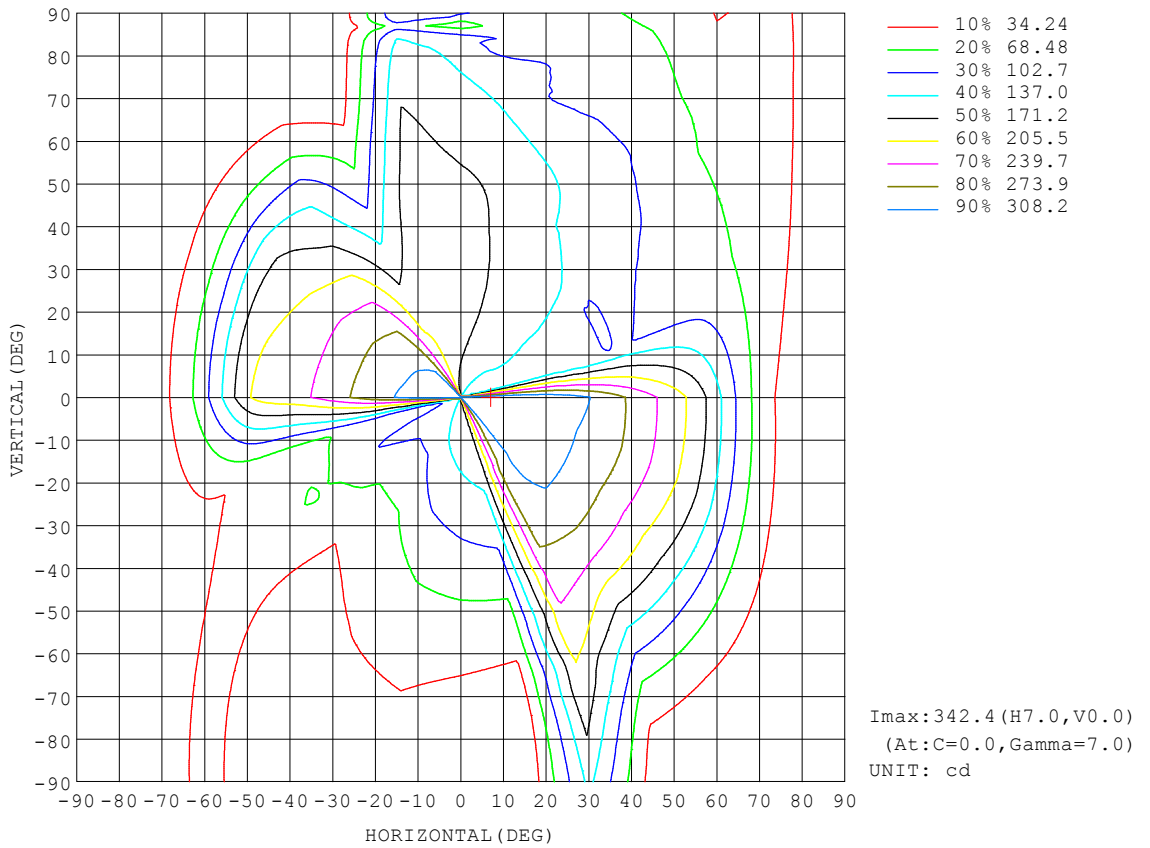
REFLECTANCE										
Ceiling	0.8	0.8	0.8	0.7	0.7	0.7	0.5	0.5	0.5	0
Walls	0.7	0.5	0.3	0.7	0.5	0.3	0.7	0.5	0.3	0
Working plane	0.2	0.2	0.2	0.2	0.2	0.2	0.2	0.2	0.2	0
ROOM INDEX	UTILIZATION FACTORS (PERCENT) $k(RI) \times RCR = 5$									
$k = 0.60$	51	39	32	50	39	32	48	38	31	25
0.80	61	48	41	59	48	40	57	46	39	32
1.00	69	57	49	67	56	48	64	56	47	39
1.25	76	64	56	74	63	55	70	60	54	45
1.50	81	69	62	78	68	61	74	65	59	49
2.00	88	78	70	85	76	69	80	72	66	56
2.50	92	83	75	89	81	74	83	76	71	59
3.00	95	87	80	92	85	79	86	80	75	63
4.00	100	93	87	96	90	85	90	85	80	67
5.00	103	96	91	99	93	89	92	88	84	70
ROOM INDEX	UF(total)									Direct
According to DIN EN 13032-2 2004			Suspended				SHRNOM = 1.25			

C Range: 0 - 360DEG  
 C Interval: 15.0DEG  
 Test Speed: HIGH  
 Temperature: 25.3°C  
 Operators: DAMIN  
 Test Date: 2024-07-15

$\gamma$  Range: 0 - 180DEG  
 $\gamma$  Interval: 1.0DEG  
 Test System: EVERFINE GO-2000B\_V1 SYSTEM V2.00.471  
 Humidity: 65.0%  
 Test Distance: 4.880m [K=1.0000]  
 Remarks:

**ISOCANDELA DIAGRAM**

NAME: LED Strip	TYPE: Indoor lighting	WEIGHT: 75g
SPEC.: LED	DIM.: 1000*10*5MM	SERIAL No.: 20240709001
MFR.: EVERFINE	SUR.: 1000*10MM	Shielding Angle:



C Range: 0 - 360DEG  
 C Interval: 15.0DEG  
 Test Speed: HIGH  
 Temperature: 25.3°C  
 Operators: DAMIN  
 Test Date: 2024-07-15

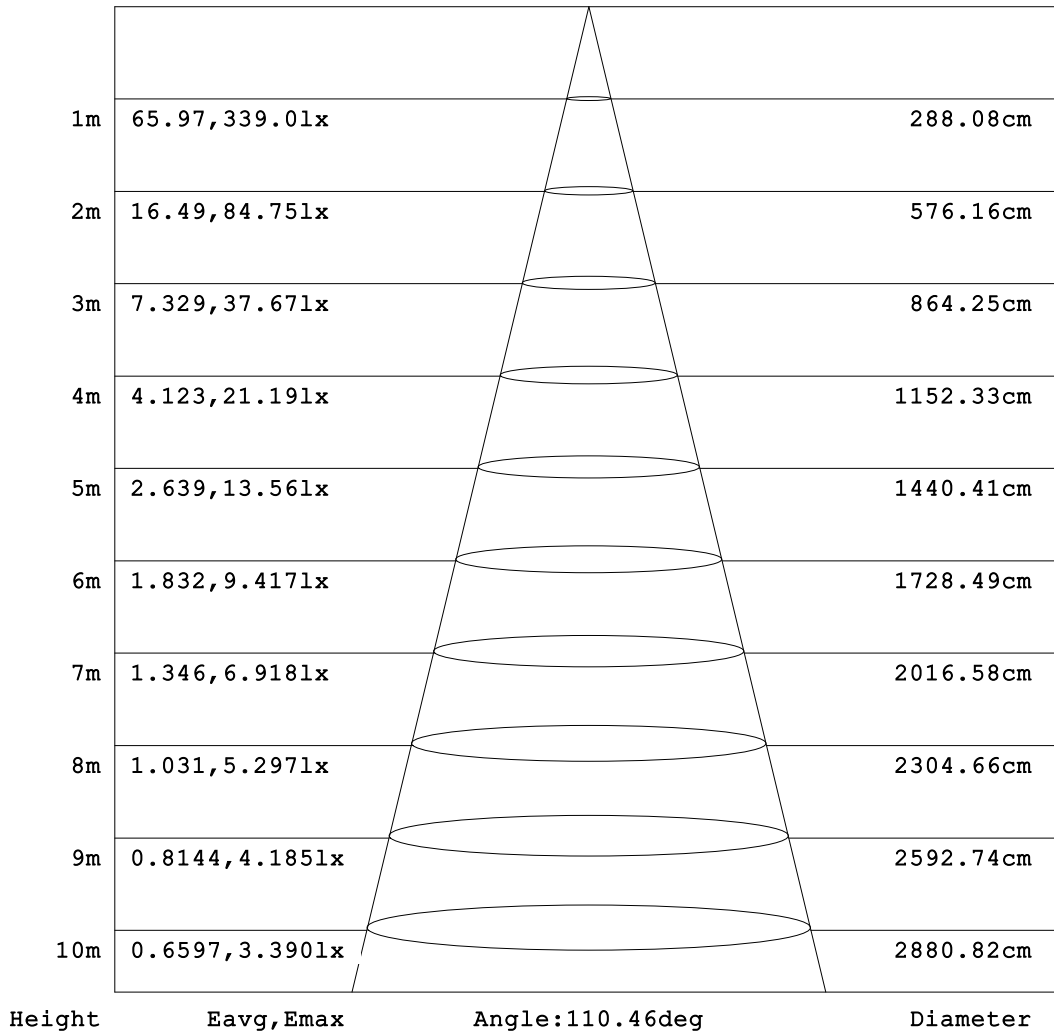
γ Range: 0 - 180DEG  
 γ Interval: 1.0DEG  
 Test System: EVERFINE GO-2000B\_V1 SYSTEM V2.00.471  
 Humidity: 65.0%  
 Test Distance: 4.880m [K=1.0000]  
 Remarks:



**AAI Figure**

NAME: LED Strip	TYPE: Indoor lighting	WEIGHT: 75g
SPEC.: LED	DIM.: 1000*10*5MM	SERIAL No.: 20240709001
MFR.: EVERFINE	SUR.: 1000*10MM	Shielding Angle:

Flux out:455.5 lm



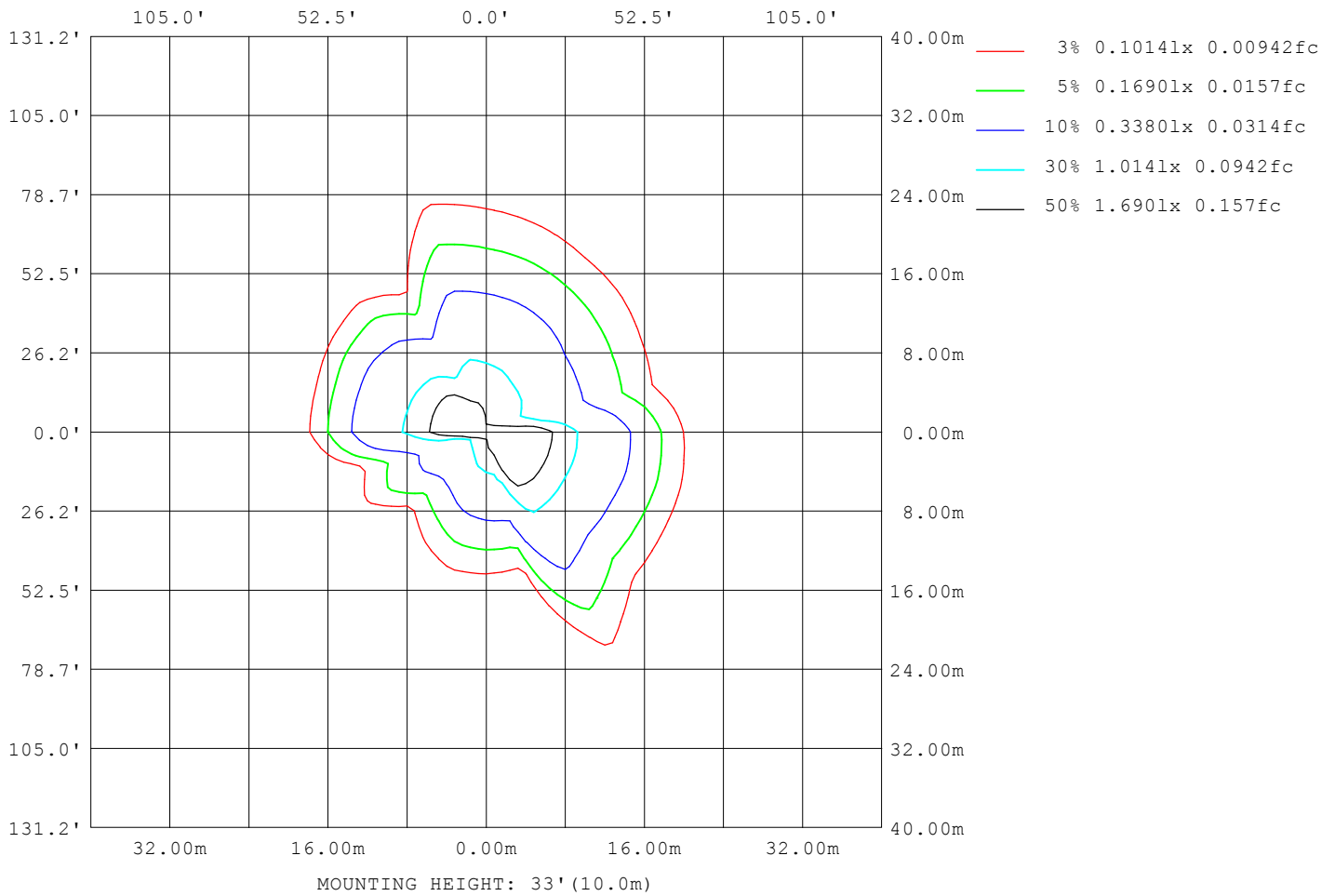
Note: The Curves indicate the illuminated area and the average illumination when the luminaire is at different distance.

C Range: 0 - 360DEG  
 C Interval: 15.0DEG  
 Test Speed: HIGH  
 Temperature: 25.3°C  
 Operators: DAMIN  
 Test Date: 2024-07-15

γ Range: 0 - 180DEG  
 γ Interval: 1.0DEG  
 Test System: EVERFINE GO-2000B\_V1 SYSTEM V2.00.471  
 Humidity: 65.0%  
 Test Distance: 4.880m [K=1.0000]  
 Remarks:

**ISOLUX DIAGRAM**

NAME: LED Strip	TYPE: Indoor lighting	WEIGHT: 75g
SPEC.: LED	DIM.: 1000*10*5MM	SERIAL No.: 20240709001
MFR.: EVERFINE	SUR.: 1000*10MM	Shielding Angle:



C Range: 0 - 360DEG  
 C Interval: 15.0DEG  
 Test Speed: HIGH  
 Temperature: 25.3°C  
 Operators: DAMIN  
 Test Date: 2024-07-15

γ Range: 0 - 180DEG  
 γ Interval: 1.0DEG  
 Test System: EVERFINE GO-2000B\_V1 SYSTEM V2.00.471  
 Humidity: 65.0%  
 Test Distance: 4.880m [K=1.0000]  
 Remarks:

LED Avg.L Report

NAME: LED Strip	TYPE: Indoor lighting	WEIGHT: 75g
SPEC.: LED	DIM.: 1000*10*5MM	SERIAL No.: 20240709001
MFR.: EVERFINE	SUR.: 1000*10MM	Shielding Angle:

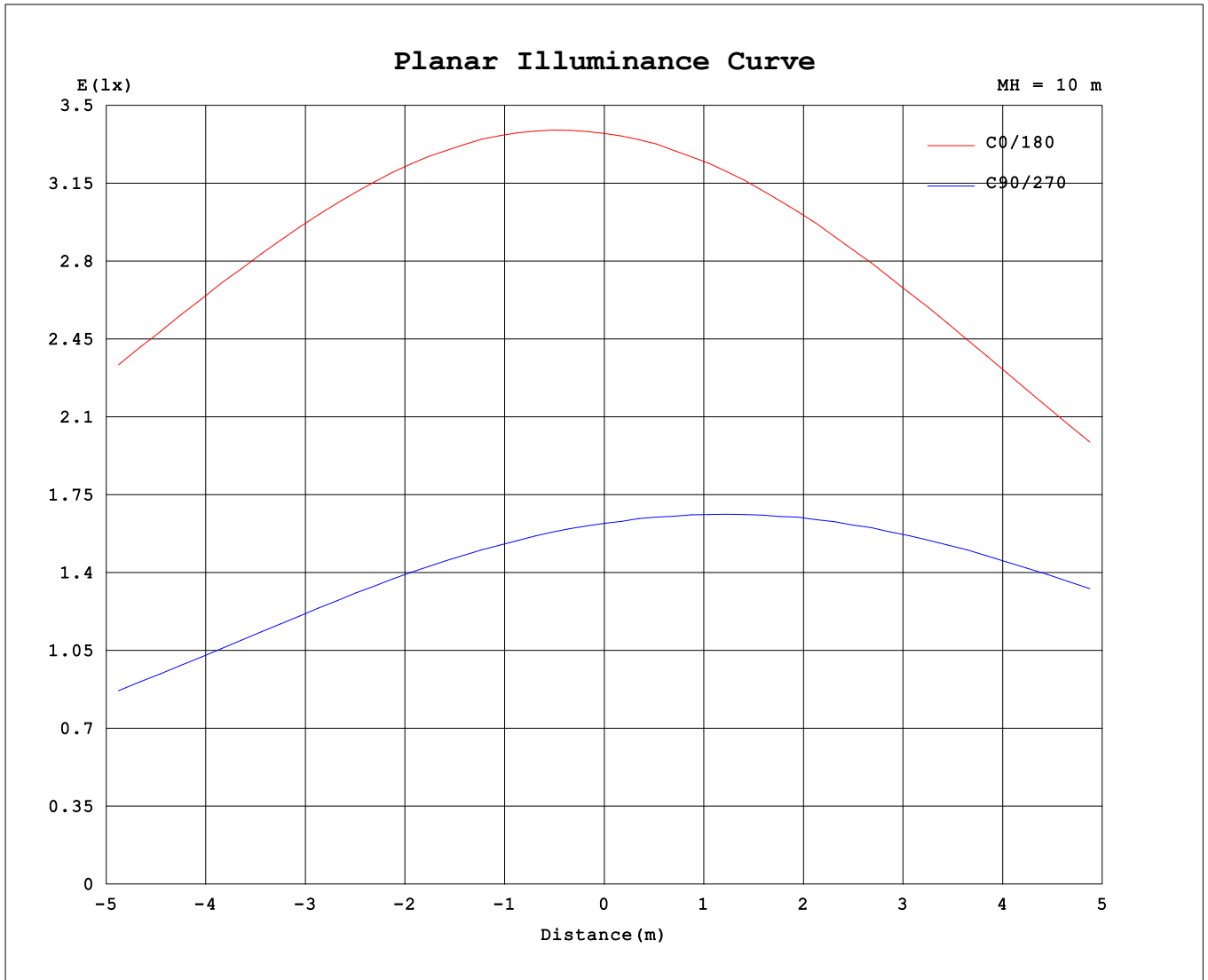
AvgL	cd/m2
L_0~180 (65) av	17552
L_0~180 (75) av	8132
L_0~180 (85) av	5601
L_90~270 (65) av	22317
L_90~270 (75) av	30678
L_90~270 (85) av	67675
L_45 (65) av	17845
L_45 (75) av	16922
L_45 (85) av	33254

Standard: GB/T 29293-2012

C Range: 0 - 360DEG  
 C Interval: 15.0DEG  
 Test Speed: HIGH  
 Temperature:25.3°C  
 Operators:DAMIN  
 Test Date:2024-07-15

γ Range: 0 - 180DEG  
 γ Interval: 1.0DEG  
 Test System:EVERFINE GO-2000B\_V1 SYSTEM V2.00.471  
 Humidity:65.0%  
 Test Distance:4.880m [K=1.0000]  
 Remarks:

**Planar Illuminance Curve**



C Range: 0 - 360DEG  
 C Interval: 15.0DEG  
 Test Speed: HIGH  
 Temperature: 25.3°C  
 Operators: DAMIN  
 Test Date: 2024-07-15

γ Range: 0 - 180DEG  
 γ Interval: 1.0DEG  
 Test System: EVERFINE GO-2000B\_V1 SYSTEM V2.00.471  
 Humidity: 65.0%  
 Test Distance: 4.880m [K=1.0000]  
 Remarks:

LUMINOUS DISTRIBUTION INTENSITY DATA

NAME: LED Strip	TYPE: Indoor lighting	WEIGHT: 75g
SPEC.: LED	DIM.: 1000*10*5MM	SERIAL No.: 20240709001
MFR.: EVERFINE	SUR.: 1000*10MM	Shielding Angle:

Table--1

UNIT: cd

C (DEG) \ γ (DEG)	0	15	30	45	60	75	90	105	120	135	150	165	180	195	210	225	240	255	270
0	337	332	328	321	243	173	162	154	135	126	127	116	337	332	328	321	243	173	162
5	342	336	332	325	253	166	156	147	127	118	123	93.1	331	325	321	314	234	179	168
10	342	337	333	328	265	159	150	139	116	110	118	69.3	322	316	313	305	223	185	173
15	340	333	330	327	272	152	141	129	104	99.0	112	71.6	310	304	301	293	212	190	178
20	333	327	325	323	288	142	132	119	90.8	87.1	106	78.3	295	289	287	279	199	194	181
25	324	317	316	316	290	132	122	108	78.8	74.7	99.5	76.5	277	272	271	261	186	197	183
30	310	302	304	306	285	120	110	96.4	68.7	62.1	88.9	70.4	258	253	252	240	171	200	184
35	290	289	288	292	279	106	97.7	85.3	60.5	50.4	70.3	62.5	240	235	232	218	154	201	183
40	267	270	267	274	273	91.8	85.4	75.5	53.5	40.4	71.6	55.0	228	220	212	194	135	201	182
45	244	247	242	251	258	77.1	73.7	67.2	47.3	32.6	66.0	48.9	221	208	196	172	116	201	182
50	221	223	215	223	249	63.5	63.3	59.9	43.3	25.3	58.3	43.2	200	190	181	153	95.7	198	178
55	191	195	186	191	237	51.8	54.3	53.9	38.9	19.1	51.9	37.6	147	144	150	134	76.3	190	170
60	147	156	152	156	228	40.2	44.5	46.6	33.9	14.1	47.4	32.2	93.1	91.7	102	104	59.4	184	161
65	96.8	109	112	122	207	28.2	34.5	39.6	29.4	11.1	45.0	26.6	51.6	51.7	60.2	66.0	40.9	177	154
70	54.5	65.9	76.2	87.0	201	17.6	26.1	33.6	26.0	10.4	43.7	21.3	26.9	26.8	32.1	37.6	23.8	170	147
75	28.4	36.9	44.2	56.7	189	9.55	20.1	29.7	25.5	11.0	43.0	16.9	13.7	13.6	16.0	19.4	12.7	162	139
80	14.3	19.7	23.6	35.8	173	5.22	17.7	28.7	26.4	12.5	42.7	13.2	6.84	6.76	7.55	8.80	6.14	153	130
85	6.55	9.66	11.7	24.0	159	3.39	16.8	29.1	27.8	14.7	42.4	10.9	3.21	3.24	3.41	3.55	2.74	127	101
90	2.87	4.56	5.55	18.6	146	2.52	15.9	29.8	29.5	16.9	41.9	9.76	1.59	1.73	1.74	1.69	1.79	126	104
95	1.77	2.57	3.02	14.5	133	2.26	2.14	30.2	31.2	19.0	41.0	9.32	1.30	1.48	1.48	1.47	1.81	115	97.4
100	1.52	1.81	1.97	11.4	122	2.27	15.5	1.90	32.6	20.9	39.8	9.36	1.32	1.49	1.52	1.52	1.92	102	86.0
105	1.45	1.55	1.55	8.41	111	2.36	15.1	30.5	32.6	22.9	38.2	9.63	1.43	1.61	1.65	1.68	2.12	93.8	77.7
110	1.47	1.55	1.49	5.94	97.0	2.42	14.5	29.9	28.9	25.1	36.1	9.97	1.61	1.79	1.84	1.86	2.41	88.4	69.5
115	1.58	1.63	1.57	4.06	84.5	2.50	14.0	29.1	32.3	27.3	34.0	10.3	1.82	2.00	2.04	2.04	2.68	80.1	50.8
120	1.73	1.77	1.72	1.55	70.8	2.58	13.9	28.4	30.8	29.0	32.2	10.6	2.05	2.23	2.21	2.22	2.93	50.5	44.8
125	1.91	1.93	1.78	1.70	49.0	2.67	14.2	27.6	29.4	30.0	30.3	10.9	2.27	2.45	2.37	2.41	3.15	46.3	33.7
130	2.09	2.10	1.93	1.87	29.4	2.78	14.6	27.1	28.1	18.2	28.7	11.2	2.47	2.65	2.54	2.59	3.31	43.4	22.9
135	2.27	2.26	2.12	2.05	14.1	2.86	14.0	26.6	27.1	26.2	26.9	11.8	2.68	2.83	2.69	2.77	3.41	30.9	13.6
140	2.46	2.46	2.31	2.25	5.77	2.95	12.9	20.9	26.3	27.7	24.9	12.6	2.88	2.94	2.86	2.95	3.48	19.8	7.88
145	2.68	2.67	2.54	2.48	2.45	3.02	11.5	14.2	24.1	25.9	22.4	13.2	3.09	3.06	3.04	3.13	3.53	12.8	6.71
150	2.92	2.87	2.78	2.71	1.71	2.99	8.27	8.59	16.2	24.6	19.6	10.9	3.30	3.23	3.23	3.30	3.55	9.43	6.79
155	3.17	3.10	3.01	2.95	1.46	2.98	6.30	5.95	9.77	23.8	15.1	14.2	3.50	3.40	3.40	3.45	3.55	8.72	6.62
160	3.41	3.30	3.22	3.22	1.46	3.03	5.10	7.94	6.53	22.7	3.36	14.4	3.67	3.55	3.57	3.59	3.55	7.31	6.01
165	3.59	3.45	3.47	3.41	1.53	3.07	4.44	8.73	7.99	12.9	11.0	13.0	3.83	3.71	3.71	3.70	3.53	6.20	5.46
170	3.70	3.64	3.64	3.58	1.75	3.22	4.50	8.67	8.73	7.70	9.98	13.2	3.95	3.82	3.82	3.79	3.52	5.19	5.06
175	3.80	3.78	3.79	3.74	1.95	3.39	4.61	8.19	8.65	8.80	8.81	3.76	3.98	3.89	3.89	3.84	3.49	4.60	4.80
180	3.92	3.90	3.91	3.85	3.77	3.47	4.67	7.33	7.74	13.4	8.49	12.4	3.93	3.90	3.92	3.85	3.48	4.22	4.73

C Range: 0 - 360DEG  
 C Interval: 15.0DEG  
 Test Speed: HIGH  
 Temperature: 25.3°C  
 Operators: DAMIN  
 Test Date: 2024-07-15

γ Range: 0 - 180DEG  
 γ Interval: 1.0DEG  
 Test System: EVERFINE GO-2000B\_V1 SYSTEM V2.00.471  
 Humidity: 65.0%  
 Test Distance: 4.880m [K=1.0000]  
 Remarks:

LUMINOUS DISTRIBUTION INTENSITY DATA

NAME: LED Strip	TYPE: Indoor lighting	WEIGHT: 75g
SPEC.: LED	DIM.: 1000*10*5MM	SERIAL No.: 20240709001
MFR.: EVERFINE	SUR.: 1000*10MM	Shielding Angle:

Table--2

UNIT: cd

C (DEG) \ γ (DEG)	285	300	315	330	345														
0	154	135	126	127	116														
5	159	141	133	132	119														
10	164	145	138	134	120														
15	167	148	141	133	120														
20	169	150	143	127	121														
25	170	150	142	126	110														
30	169	148	140	121	103														
35	168	146	137	94.3	104														
40	166	144	132	109	104														
45	165	141	117	105	99.9														
50	161	139	113	102	94.8														
55	154	133	112	98.1	89.4														
60	144	123	107	92.3	82.2														
65	135	114	103	82.6	73.1														
70	129	99.4	93.2	72.1	65.6														
75	121	80.4	88.1	64.7	58.2														
80	88.7	86.5	82.2	50.5	50.8														
85	93.4	80.3	73.7	40.0	44.1														
90	93.5	77.4	60.0	32.9	40.9														
95	82.6	68.8	36.9	26.4	36.5														
100	71.0	59.4	20.6	21.1	30.5														
105	61.8	49.7	13.3	16.4	24.9														
110	54.1	11.9	8.51	12.4	20.5														
115	41.1	5.14	7.11	9.05	16.9														
120	26.6	4.15	5.97	4.92	13.7														
125	15.3	9.34	5.56	2.55	10.7														
130	9.68	8.61	5.38	2.04	7.90														
135	7.32	6.85	5.69	1.94	6.11														
140	6.71	5.79	6.32	1.89	4.81														
145	5.84	5.34	7.16	1.88	4.17														
150	5.26	5.49	8.33	1.94	5.05														
155	5.06	6.26	9.88	2.82	9.89														
160	4.97	7.41	11.8	5.14	14.7														
165	5.15	9.18	13.8	6.61	15.7														
170	5.56	11.7	15.4	7.62	15.1														
175	6.12	14.6	15.8	8.21	13.8														
180	6.79	18.8	14.3	8.86	9.81														

C Range: 0 - 360DEG  
 C Interval: 15.0DEG  
 Test Speed: HIGH  
 Temperature:25.3°C  
 Operators:DAMIN  
 Test Date:2024-07-15

γ Range: 0 - 180DEG  
 γ Interval: 1.0DEG  
 Test System:EVERFINE GO-2000B\_V1 SYSTEM V2.00.471  
 Humidity:65.0%  
 Test Distance:4.880m [K=1.0000]  
 Remarks: