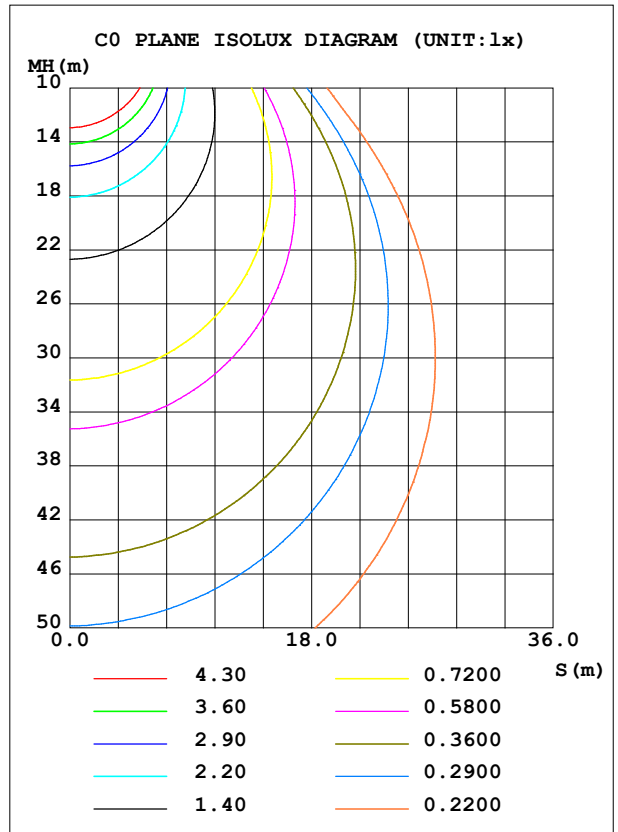
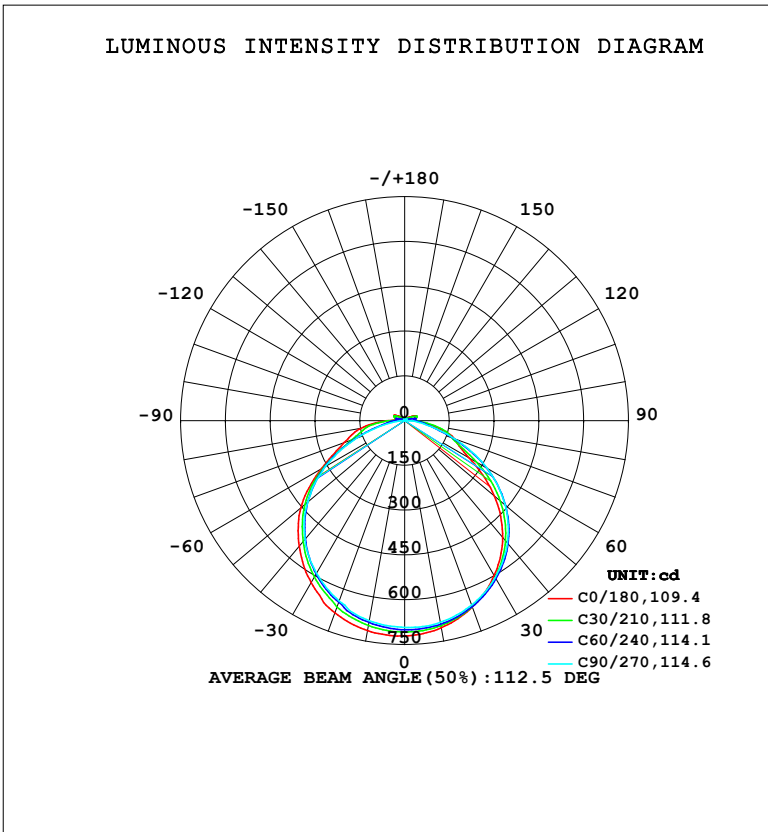


**LUMINAIRE PHOTOMETRIC TEST REPORT**

NAME: LED Strip	TYPE: Indoor lighting	WEIGHT: 75g
SPEC.: LED	DIM.: 1000*12*5MM	SERIAL No.: 20240503026
MFR.: EVERFINE	SUR.: 1000*12MM	Shielding Angle:

DATA OF LAMP		PHOTOMETRIC DATA			
HM0DET2NCR-01-EU-HR-HQ1-EP 1M		Imax (cd)	721.6	S/MH (C0/180)	1.29
NOMINAL POWER (W)	18.1073	LOR (%)	100.0	S/MH (C90/270)	1.27
RATED VOLTAGE (V)	AC 230V	TOTAL FLUX (lm)	2144.8	$\eta$ UP, DN (C0-180)	2.7, 47.4
NOMINAL FLUX (lm)	2144.77	CIE CLASS	DIRECT	$\eta$ UP, DN (C180-360)	2.5, 47.4
LAMPS INSIDE	1	$\eta$ up (%)	5.2	CIBSE SHR NOM	1.25
TEST VOLTAGE (V)	AC 230V	$\eta$ down (%)	94.8	CIBSE SHR MAX	1.35



C Range: 0 - 360DEG  
 C Interval: 15.0DEG  
 Test Speed: HIGH  
 Temperature: 25.3°C  
 Operators: DAMIN  
 Test Date: 2024-05-06

$\gamma$  Range: 0 - 180DEG  
 $\gamma$  Interval: 1.0DEG  
 Test System: EVERFINE GO-2000B\_V1 SYSTEM V2.00.471  
 Humidity: 65.0%  
 Test Distance: 4.880m [K=1.0000]  
 Remarks:

ZONAL FLUX DIAGRAM

ZONAL FLUX DIAGRAM:

$\gamma$	C0	C45	C90	C135	C180	C225	C270	C315	$\gamma$	$\Phi$ zone	$\Phi$ total	%lum,lamp
10	704.4	696.2	686.1	689.1	714.4	692.3	680.5	687.7	0- 10	66.62	66.62	3.11,3.11
20	664.0	665.5	657.3	655.0	684.5	658.1	642.3	656.7	10- 20	191.7	258.3	12,12
30	599.8	605.7	607.0	599.5	626.4	602.2	590.1	601.6	20- 30	291.8	550.1	25.6,25.6
40	511.3	528.8	536.0	524.2	550.0	524.9	519.9	519.6	30- 40	354.2	904.3	42.2,42.2
50	392.3	427.3	439.6	425.9	453.8	428.1	423.2	406.9	40- 50	368.0	1272	59.3,59.3
60	248.2	298.0	318.7	303.6	321.0	312.7	305.7	286.4	50- 60	325.2	1598	74.5,74.5
70	177.1	158.8	179.0	172.0	215.6	174.7	168.8	163.3	60- 70	232.0	1830	85.3,85.3
80	91.67	95.82	65.93	99.75	148.1	97.67	52.03	91.73	70- 80	139.3	1969	91.8,91.8
90	34.23	36.75	11.48	40.75	53.02	37.71	3.975	35.76	80- 90	64.70	2034	94.8,94.8
100	31.83	35.62	2.943	34.46	30.18	27.92	3.227	26.84	90-100	29.37	2063	96.2,96.2
110	40.90	32.58	3.396	43.03	35.84	38.37	3.789	35.93	100-110	28.59	2092	97.5,97.5
120	30.42	13.35	4.101	21.07	37.21	18.58	4.815	14.98	110-120	23.02	2115	98.6,98.6
130	15.96	7.274	4.918	7.914	21.71	8.066	5.568	7.702	120-130	12.47	2127	99.2,99.2
140	8.821	5.892	5.727	6.137	10.24	6.285	6.172	7.911	130-140	6.633	2134	99.5,99.5
150	6.968	6.477	7.165	6.836	7.199	6.702	7.079	8.612	140-150	4.488	2138	99.7,99.7
160	7.520	7.275	7.853	7.709	7.359	7.382	7.906	9.374	150-160	3.501	2142	99.9,99.9
170	8.081	7.865	8.609	8.401	8.006	7.935	8.448	10.28	160-170	2.324	2144	100,100
180	8.386	8.226	8.705	9.687	8.403	8.220	8.673	9.615	170-180	0.8249	2145	100,100
DEG	LUMINOUS INTENSITY:cd									UNIT:lm		

Conical surface Flux(90deg): 1090 lm

%lum = 50.8%

%lamp = 50.8%

Conical surface Flux(120deg): 1597.5 lm

%lum = 74.5%

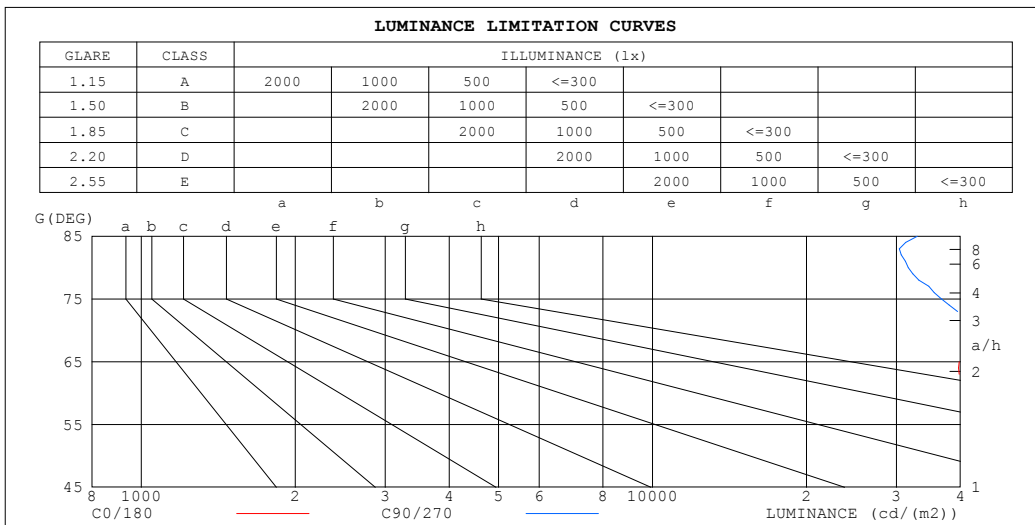
%lamp = 74.5%

C Range: 0 - 360DEG  
 C Interval: 15.0DEG  
 Test Speed: HIGH  
 Temperature:25.3°C  
 Operators:DAMIN  
 Test Date:2024-05-06

$\gamma$  Range: 0 - 180DEG  
 $\gamma$  Interval: 1.0DEG  
 Test System:EVERFINE GO-2000B\_V1 SYSTEM V2.00.471  
 Humidity:65.0%  
 Test Distance:4.880m [K=1.0000]  
 Remarks:

**LUMINANCE LIMITATION CURVES**

<b>NAME:</b> LED Strip	<b>TYPE:</b> Indoor lighting	<b>WEIGHT:</b> 75g
<b>SPEC.:</b> LED	<b>DIM.:</b> 1000*12*5MM	<b>SERIAL No.:</b> 20240503026
<b>MFR.:</b> EVERFINE	<b>SUR.:</b> 1000*12MM	<b>Shielding Angle:</b>



LUMINANCE cd/(m2)		
G (DEG)	C0/180	C90/270
85	50069	32962
80	43993	31641
75	44964	36760
70	43146	43610
65	39805	49041
60	41369	53117
55	46614	55551
50	50861	56988
45	53689	57843

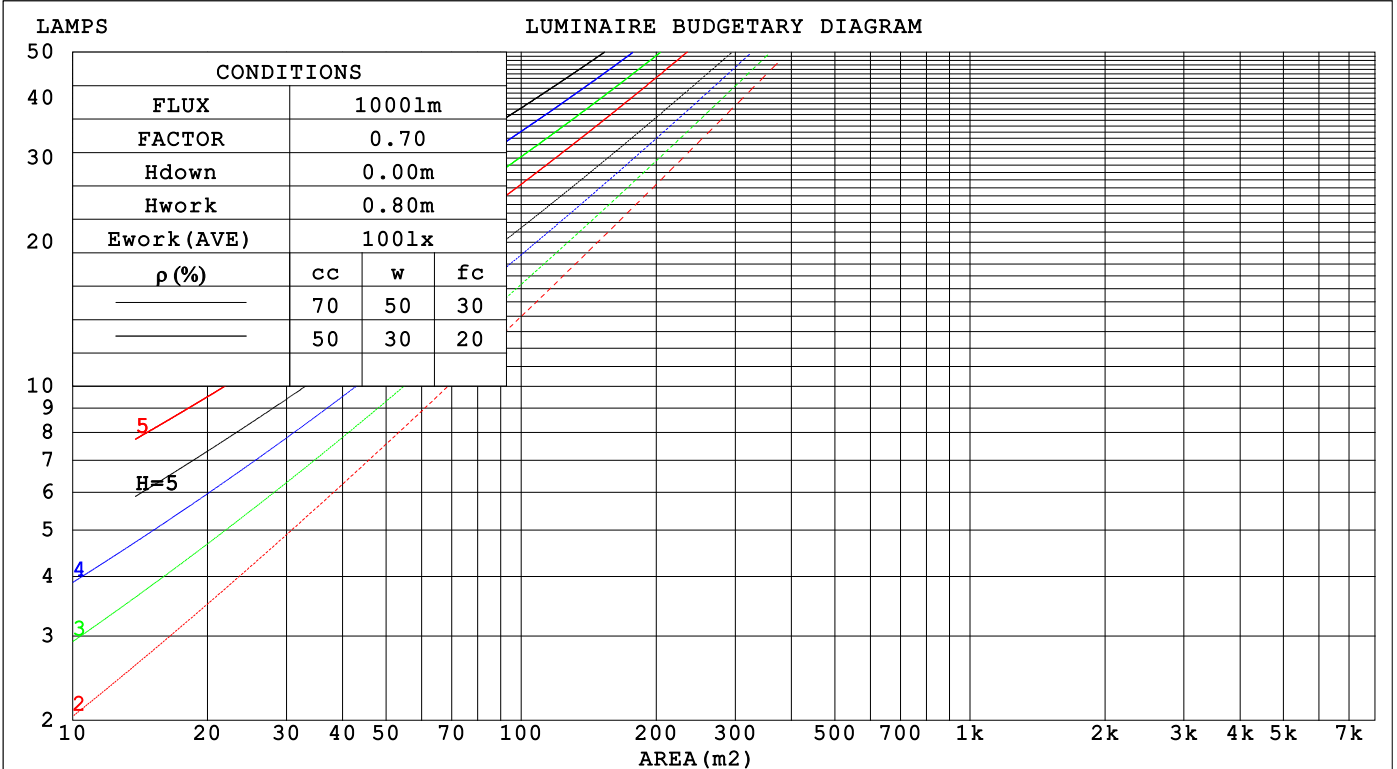
C Range: 0 - 360DEG  
 C Interval: 15.0DEG  
 Test Speed: HIGH  
 Temperature: 25.3°C  
 Operators: DAMIN  
 Test Date: 2024-05-06

γ Range: 0 - 180DEG  
 γ Interval: 1.0DEG  
 Test System: EVERFINE GO-2000B\_V1 SYSTEM V2.00.471  
 Humidity: 65.0%  
 Test Distance: 4.880m [K=1.0000]  
 Remarks:

**CU AND LUMINAIRE BUDGETARY ESTIMATE DIAGRAM**

NAME: LED Strip	TYPE: Indoor lighting	WEIGHT: 75g
SPEC.: LED	DIM.: 1000*12*5MM	SERIAL No.: 20240503026
MFR.: EVERFINE	SUR.: 1000*12MM	Shielding Angle:

pcc	80%			70%			50%			30%			10%			0
	50%	30%	10%	50%	30%	10%	50%	30%	10%	50%	30%	10%	50%	30%	10%	0
p <sub>w</sub>	0															
p <sub>fc</sub>	0															
RCR	RCR:Room Cavity Ratio			Coefficients of Utilization(CU)												
0.0	1.18	1.18	1.18	1.14	1.14	1.14	1.08	1.08	1.08	1.03	1.03	1.03	.97	.97	.97	.95
1.0	1.02	.98	.94	.99	.95	.92	.94	.91	.88	.89	.87	.84	.85	.83	.81	.79
2.0	.89	.82	.76	.87	.80	.75	.82	.77	.73	.78	.74	.70	.75	.71	.68	.65
3.0	.78	.70	.63	.76	.69	.63	.73	.66	.61	.69	.64	.59	.66	.61	.57	.55
4.0	.69	.60	.54	.68	.59	.53	.64	.57	.52	.61	.55	.51	.59	.54	.49	.47
5.0	.62	.53	.46	.60	.52	.46	.58	.50	.45	.55	.49	.44	.53	.47	.43	.41
6.0	.56	.47	.40	.54	.46	.40	.52	.45	.39	.50	.43	.38	.48	.42	.38	.36
7.0	.50	.42	.36	.49	.41	.35	.47	.40	.35	.45	.39	.34	.44	.38	.33	.31
8.0	.46	.37	.32	.45	.37	.31	.43	.36	.31	.42	.35	.30	.40	.34	.30	.28
9.0	.42	.34	.28	.41	.34	.28	.40	.33	.28	.38	.32	.27	.37	.31	.27	.25
10.0	.39	.31	.26	.38	.31	.26	.37	.30	.25	.36	.29	.25	.34	.29	.25	.23



C Range: 0 - 360DEG  
 C Interval: 15.0DEG  
 Test Speed: HIGH  
 Temperature: 25.3°C  
 Operators: DAMIN  
 Test Date: 2024-05-06

γ Range: 0 - 180DEG  
 γ Interval: 1.0DEG  
 Test System: EVERFINE GO-2000B\_V1 SYSTEM V2.00.471  
 Humidity: 65.0%  
 Test Distance: 4.880m [K=1.0000]  
 Remarks:

WEC AND CCEC

NAME: LED Strip	TYPE: Indoor lighting	WEIGHT: 75g
SPEC.: LED	DIM.: 1000*12*5MM	SERIAL No.: 20240503026
MFR.: EVERFINE	SUR.: 1000*12MM	Shielding Angle:

$\rho_{cc}$	80%			70%			50%			30%			10%			0
$\rho_w$	50%	30%	10%	50%	30%	10%	50%	30%	10%	50%	30%	10%	50%	30%	10%	0
$\rho_{fc}$	20%			20%			20%			20%			20%			0
RCR	RCR:Room Cavity Ratio						Wall Exitance Coefficients(WEC)									
0.0																
1.0	.317	.180	.057	.308	.176	.056	.292	.168	.054	.277	.160	.051	.264	.153	.049	
2.0	.293	.161	.049	.285	.157	.048	.271	.151	.047	.257	.144	.045	.245	.139	.044	
3.0	.269	.143	.043	.262	.141	.042	.250	.135	.041	.238	.130	.040	.227	.125	.039	
4.0	.248	.129	.038	.242	.126	.037	.230	.122	.036	.219	.118	.036	.210	.114	.035	
5.0	.229	.117	.034	.223	.115	.033	.213	.111	.033	.203	.107	.032	.194	.104	.031	
6.0	.212	.106	.030	.207	.105	.030	.198	.101	.030	.189	.098	.029	.181	.095	.028	
7.0	.197	.098	.028	.193	.096	.027	.185	.093	.027	.177	.091	.026	.169	.088	.026	
8.0	.184	.090	.025	.180	.089	.025	.173	.086	.025	.166	.084	.024	.159	.082	.024	
9.0	.173	.084	.023	.169	.082	.023	.162	.080	.023	.156	.078	.022	.150	.076	.022	
10.0	.162	.078	.022	.159	.077	.021	.153	.075	.021	.147	.073	.021	.141	.071	.020	

$\rho_{cc}$	80%			70%			50%			30%			10%			0
$\rho_w$	50%	30%	10%	50%	30%	10%	50%	30%	10%	50%	30%	10%	50%	30%	10%	0
$\rho_{fc}$	20%			20%			20%			20%			20%			0
RCR	RCR:Room Cavity Ratio						Ceiling Cavity Exitance Coefficients(CCEC)									
0.0	.230	.230	.230	.197	.197	.197	.134	.134	.134	.077	.077	.077	.025	.025	.025	
1.0	.221	.196	.174	.189	.168	.149	.129	.116	.103	.074	.067	.060	.024	.022	.019	
2.0	.212	.172	.138	.182	.148	.119	.125	.102	.083	.072	.060	.049	.023	.019	.016	
3.0	.205	.155	.115	.175	.133	.099	.120	.093	.070	.070	.054	.041	.022	.018	.013	
4.0	.197	.141	.099	.169	.122	.086	.116	.085	.061	.067	.050	.036	.022	.016	.012	
5.0	.190	.131	.088	.163	.113	.077	.112	.079	.054	.065	.047	.032	.021	.015	.011	
6.0	.182	.123	.080	.157	.106	.070	.108	.074	.049	.063	.044	.029	.020	.014	.010	
7.0	.176	.116	.074	.151	.101	.065	.104	.071	.046	.061	.042	.027	.020	.014	.009	
8.0	.169	.110	.070	.146	.096	.061	.101	.067	.043	.059	.040	.026	.019	.013	.009	
9.0	.163	.105	.066	.141	.092	.058	.097	.064	.041	.057	.038	.025	.018	.012	.008	
10.0	.158	.101	.064	.136	.088	.056	.094	.062	.039	.055	.037	.024	.018	.012	.008	

C Range: 0 - 360DEG  
 C Interval: 15.0DEG  
 Test Speed: HIGH  
 Temperature:25.3°C  
 Operators:DAMIN  
 Test Date:2024-05-06

$\gamma$  Range: 0 - 180DEG  
 $\gamma$  Interval: 1.0DEG  
 Test System:EVERFINE GO-2000B\_V1 SYSTEM V2.00.471  
 Humidity:65.0%  
 Test Distance:4.880m [K=1.0000]  
 Remarks:

**UGR(Unified Glare Rating) Table**

NAME: LED Strip		TYPE: Indoor lighting				WEIGHT: 75g						
SPEC.: LED		DIM.: 1000*12*5MM				SERIAL No.: 20240503026						
MFR.: EVERFINE		SUR.: 1000*12MM				Shielding Angle:						
ceiling/cavity		0.7	0.7	0.5	0.5	0.3	0.7	0.7	0.5	0.5	0.3	
walls		0.5	0.3	0.5	0.3	0.3	0.5	0.3	0.5	0.3	0.3	
working plane		0.2	0.2	0.2	0.2	0.2	0.2	0.2	0.2	0.2	0.2	
Room dimensions		Viewed crosswise					Viewed endwise					
x = 2H y = 2H		23.1	24.5	23.4	24.8	25.1	23.9	25.4	24.3	25.7	26.0	
	3H	24.5	25.8	24.9	26.2	26.5	25.2	26.6	25.6	26.9	27.2	
	4H	25.3	26.6	25.7	26.9	27.3	25.6	26.9	26.0	27.3	27.6	
	6H	26.0	27.2	26.4	27.5	27.9	25.9	27.1	26.3	27.5	27.8	
	8H	26.2	27.4	26.6	27.7	28.1	26.0	27.1	26.4	27.5	27.9	
	12H	26.4	27.5	26.8	27.9	28.3	26.1	27.2	26.5	27.5	28.0	
	4H	2H	23.7	24.9	24.1	25.3	25.6	24.3	25.6	24.7	26.0	26.3
		3H	25.3	26.4	25.7	26.8	27.2	25.8	26.9	26.2	27.3	27.7
		4H	26.3	27.3	26.7	27.7	28.1	26.3	27.3	26.8	27.8	28.2
		6H	27.1	28.0	27.6	28.5	28.9	26.7	27.6	27.2	28.1	28.5
		8H	27.4	28.3	27.9	28.7	29.2	26.8	27.7	27.3	28.1	28.6
		12H	27.7	28.5	28.2	29.0	29.5	27.0	27.7	27.5	28.2	28.7
	8H	4H	26.5	27.4	27.0	27.8	28.3	26.6	27.4	27.1	27.9	28.4
		6H	27.6	28.3	28.1	28.8	29.4	27.1	27.8	27.6	28.3	28.8
		8H	28.1	28.7	28.6	29.2	29.8	27.4	28.0	27.9	28.5	29.1
		12H	28.6	29.1	29.1	29.6	30.2	27.6	28.1	28.1	28.6	29.2
	12H	4H	26.5	27.3	27.1	27.8	28.3	26.6	27.4	27.1	27.9	28.4
		6H	27.7	28.3	28.2	28.8	29.4	27.3	27.9	27.8	28.4	28.9
		8H	28.3	28.8	28.8	29.3	29.9	27.6	28.1	28.1	28.6	29.2
Variations with the observer position at spacings(CIE Pub.117):												
S = 1.0H		+ 0.2 / - 0.2					+ 0.2 / - 0.2					
	1.5H	+ 0.3 / - 0.4					+ 0.3 / - 0.4					
	2.0H	+ 0.2 / - 0.5					+ 0.2 / - 0.3					

CIE Pub.117, 2145 lm Total Lamp Luminous Flux Correct (8log(F/F0) = 2.7)  
 Area: 0.012 m2

C Range: 0 - 360DEG  
 C Interval: 15.0DEG  
 Test Speed: HIGH  
 Temperature:25.3°C  
 Operators:DAMIN  
 Test Date:2024-05-06

γ Range: 0 - 180DEG  
 γ Interval: 1.0DEG  
 Test System:EVERFINE GO-2000B\_V1 SYSTEM V2.00.471  
 Humidity:65.0%  
 Test Distance:4.880m [K=1.0000]  
 Remarks:

**UTILIZATION FACTORS TABLE**

NAME: LED Strip	TYPE: Indoor lighting	WEIGHT: 75g
SPEC.: LED	DIM.: 1000*12*5MM	SERIAL No.: 20240503026
MFR.: EVERFINE	SUR.: 1000*12MM	Shielding Angle:

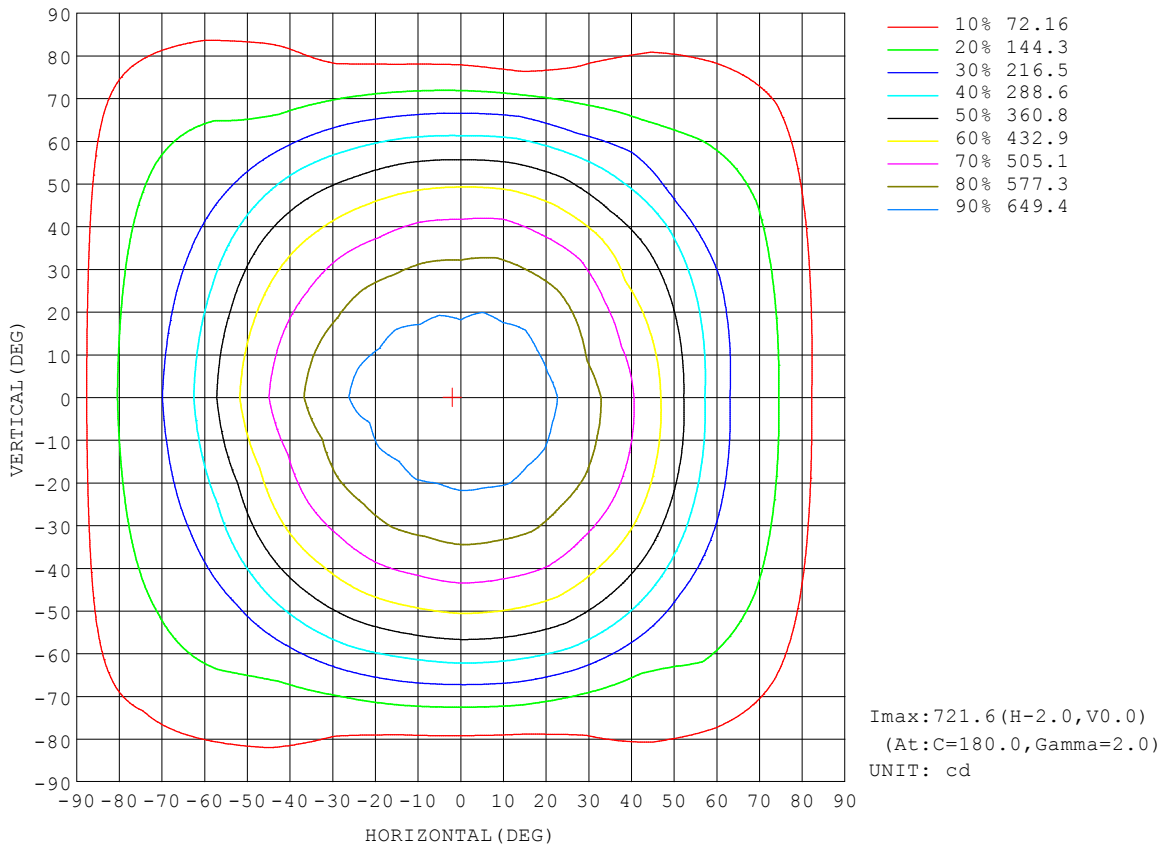
REFLECTANCE										
Ceiling	0.8	0.8	0.8	0.7	0.7	0.7	0.5	0.5	0.5	0
Walls	0.7	0.5	0.3	0.7	0.5	0.3	0.7	0.5	0.3	0
Working plane	0.2	0.2	0.2	0.2	0.2	0.2	0.2	0.2	0.2	0
ROOM INDEX	UTILIZATION FACTORS (PERCENT) $k(RI) \times RCR = 5$									
$k = 0.60$	56	44	37	55	44	37	54	43	37	30
0.80	66	54	47	65	53	46	62	52	46	39
1.00	74	63	55	73	62	55	70	63	54	47
1.25	81	70	63	79	69	63	76	68	61	54
1.50	86	76	69	84	75	68	81	73	67	59
2.00	93	84	77	91	83	76	87	80	74	66
2.50	97	89	82	94	87	81	90	84	79	70
3.00	100	93	87	98	91	86	93	88	83	73
4.00	104	98	93	101	96	91	96	92	88	78
5.00	107	101	97	104	99	95	98	95	91	81
ROOM INDEX	UF(total)									Direct
According to DIN EN 13032-2 2004			Suspended				SHRNOM = 1.25			

C Range: 0 - 360DEG  
 C Interval: 15.0DEG  
 Test Speed: HIGH  
 Temperature: 25.3°C  
 Operators: DAMIN  
 Test Date: 2024-05-06

$\gamma$  Range: 0 - 180DEG  
 $\gamma$  Interval: 1.0DEG  
 Test System: EVERFINE GO-2000B\_V1 SYSTEM V2.00.471  
 Humidity: 65.0%  
 Test Distance: 4.880m [K=1.0000]  
 Remarks:

**ISOCANDELA DIAGRAM**

NAME: LED Strip	TYPE: Indoor lighting	WEIGHT: 75g
SPEC.: LED	DIM.: 1000*12*5MM	SERIAL No.: 20240503026
MFR.: EVERFINE	SUR.: 1000*12MM	Shielding Angle:



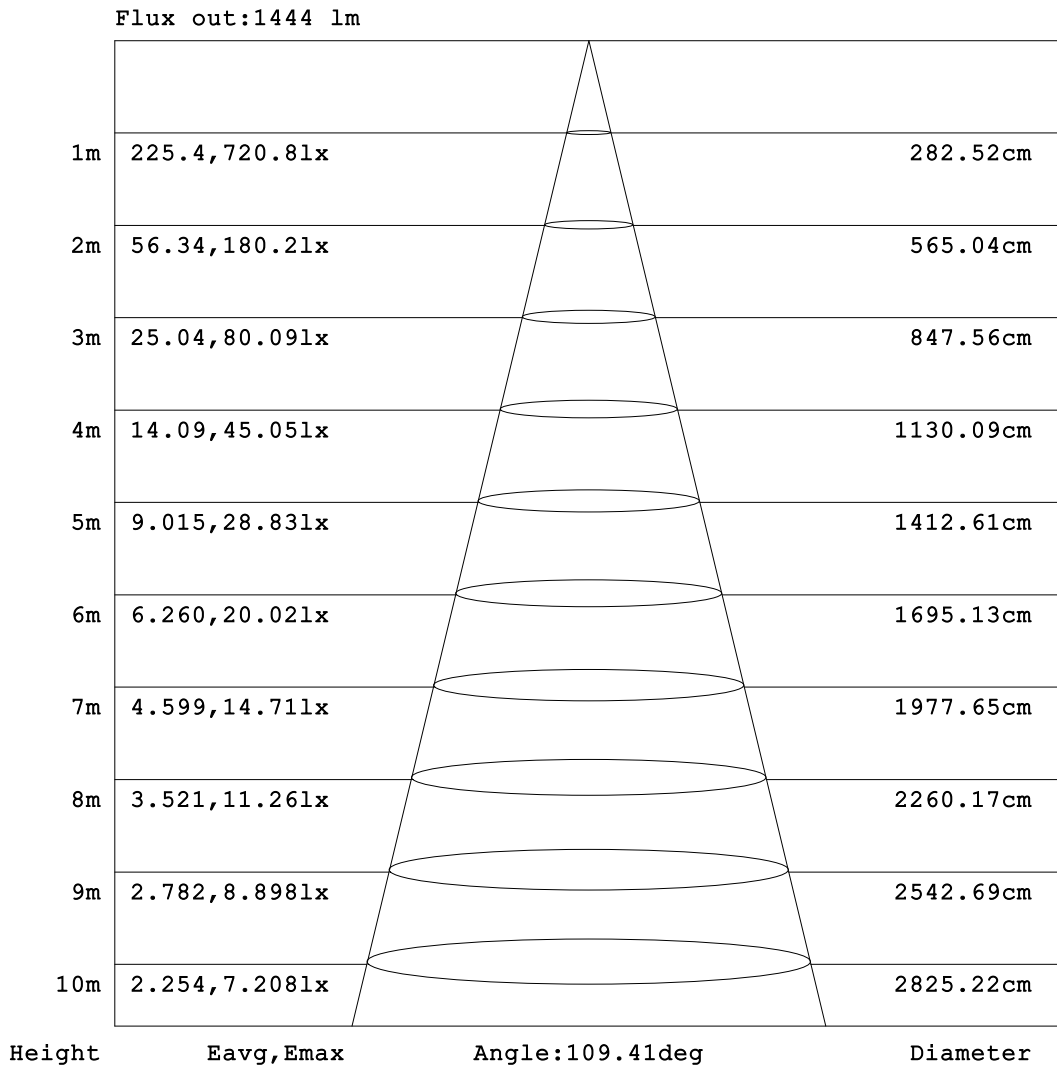
C Range: 0 - 360DEG  
 C Interval: 15.0DEG  
 Test Speed: HIGH  
 Temperature: 25.3°C  
 Operators: DAMIN  
 Test Date: 2024-05-06

γ Range: 0 - 180DEG  
 γ Interval: 1.0DEG  
 Test System: EVERFINE GO-2000B\_V1 SYSTEM V2.00.471  
 Humidity: 65.0%  
 Test Distance: 4.880m [K=1.0000]  
 Remarks:



**AAI Figure**

NAME: LED Strip	TYPE: Indoor lighting	WEIGHT: 75g
SPEC.: LED	DIM.: 1000*12*5MM	SERIAL No.: 20240503026
MFR.: EVERFINE	SUR.: 1000*12MM	Shielding Angle:



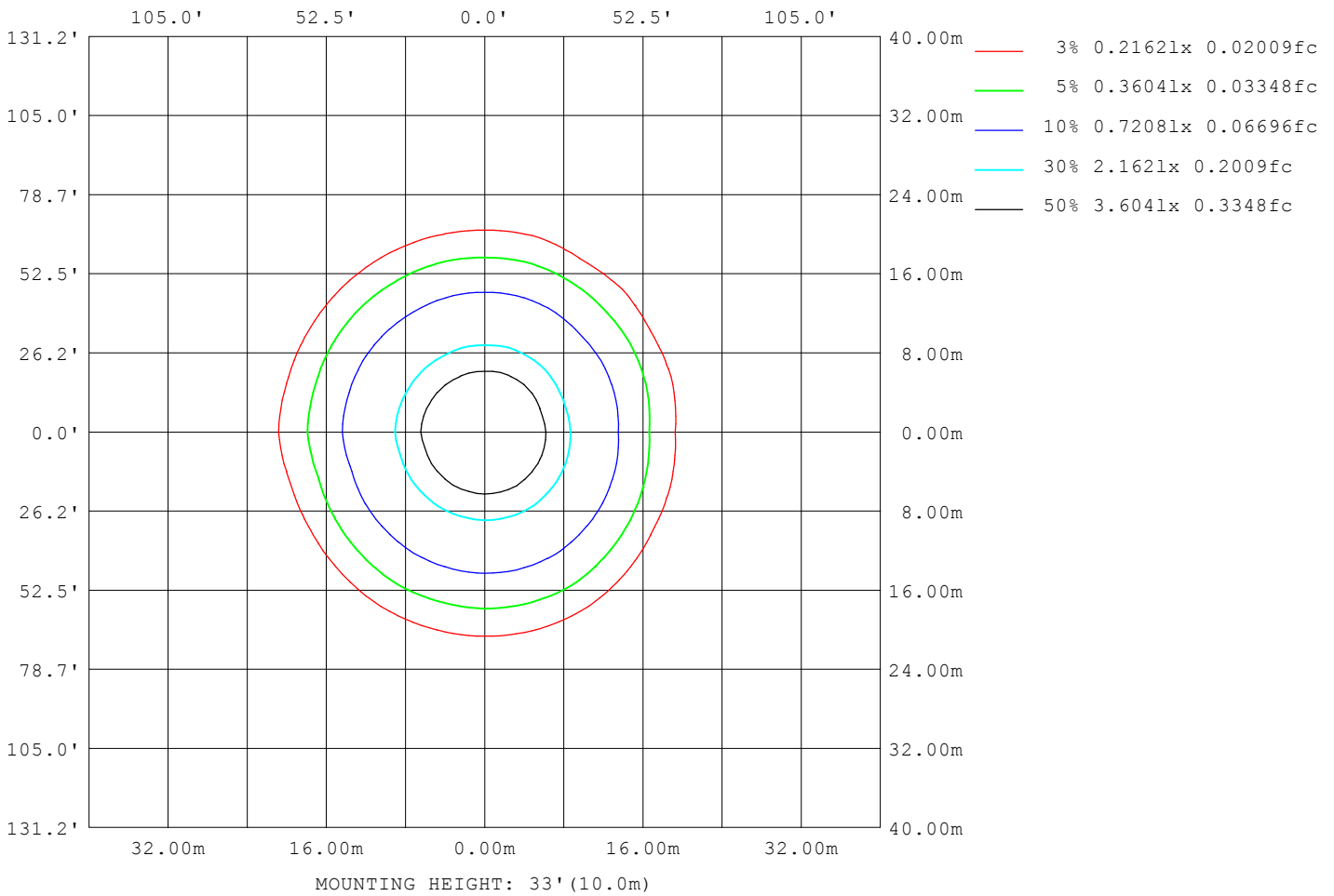
Note: The Curves indicate the illuminated area and the average illumination when the luminaire is at different distance.

C Range: 0 - 360DEG  
 C Interval: 15.0DEG  
 Test Speed: HIGH  
 Temperature: 25.3°C  
 Operators: DAMIN  
 Test Date: 2024-05-06

γ Range: 0 - 180DEG  
 γ Interval: 1.0DEG  
 Test System: EVERFINE GO-2000B\_V1 SYSTEM V2.00.471  
 Humidity: 65.0%  
 Test Distance: 4.880m [K=1.0000]  
 Remarks:

**ISOLUX DIAGRAM**

NAME: LED Strip	TYPE: Indoor lighting	WEIGHT: 75g
SPEC.: LED	DIM.: 1000*12*5MM	SERIAL No.: 20240503026
MFR.: EVERFINE	SUR.: 1000*12MM	Shielding Angle:



C Range: 0 - 360DEG  
 C Interval: 15.0DEG  
 Test Speed: HIGH  
 Temperature: 25.3°C  
 Operators: DAMIN  
 Test Date: 2024-05-06

γ Range: 0 - 180DEG  
 γ Interval: 1.0DEG  
 Test System: EVERFINE GO-2000B\_V1 SYSTEM V2.00.471  
 Humidity: 65.0%  
 Test Distance: 4.880m [K=1.0000]  
 Remarks:

LED Avg.L Report

NAME: LED Strip	TYPE: Indoor lighting	WEIGHT: 75g
SPEC.: LED	DIM.: 1000*12*5MM	SERIAL No.: 20240503026
MFR.: EVERFINE	SUR.: 1000*12MM	Shielding Angle:

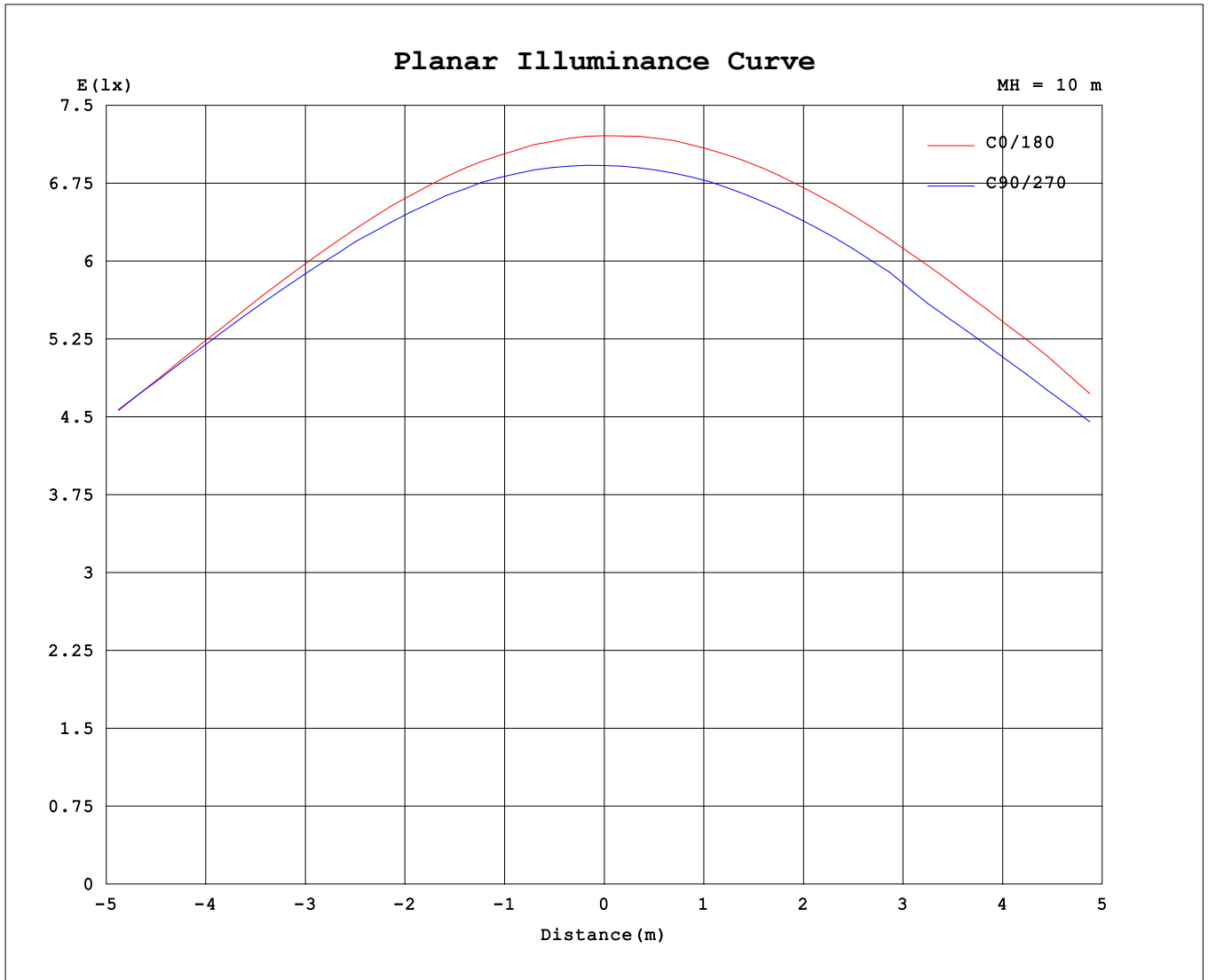
AvgL	cd/m2
L_0~180 (65) av	45530
L_0~180 (75) av	51954
L_0~180 (85) av	71840
L_90~270 (65) av	47948
L_90~270 (75) av	35211
L_90~270 (85) av	25539
L_45 (65) av	45704
L_45 (75) av	39850
L_45 (85) av	62928

Standard: GB/T 29293-2012

C Range: 0 - 360DEG  
 C Interval: 15.0DEG  
 Test Speed: HIGH  
 Temperature:25.3°C  
 Operators:DAMIN  
 Test Date:2024-05-06

γ Range: 0 - 180DEG  
 γ Interval: 1.0DEG  
 Test System:EVERFINE GO-2000B\_V1 SYSTEM V2.00.471  
 Humidity:65.0%  
 Test Distance:4.880m [K=1.0000]  
 Remarks:

**Planar Illuminance Curve**



C Range: 0 - 360DEG  
 C Interval: 15.0DEG  
 Test Speed: HIGH  
 Temperature: 25.3°C  
 Operators: DAMIN  
 Test Date: 2024-05-06

γ Range: 0 - 180DEG  
 γ Interval: 1.0DEG  
 Test System: EVERFINE GO-2000B\_V1 SYSTEM V2.00.471  
 Humidity: 65.0%  
 Test Distance: 4.880m [K=1.0000]  
 Remarks:

LUMINOUS DISTRIBUTION INTENSITY DATA

NAME: LED Strip	TYPE: Indoor lighting	WEIGHT: 75g
SPEC.: LED	DIM.: 1000*12*5MM	SERIAL No.: 20240503026
MFR.: EVERFINE	SUR.: 1000*12MM	Shielding Angle:

Table--1

UNIT: cd

C (DEG) γ (DEG)	0	15	30	45	60	75	90	105	120	135	150	165	180	195	210	225	240	255	270
0	721	716	708	705	700	696	692	695	697	699	703	706	721	716	708	705	700	696	692
5	715	713	706	703	699	696	692	694	695	697	701	704	720	714	705	702	695	692	689
10	704	703	698	696	693	690	686	687	687	689	693	696	714	706	697	692	686	682	680
15	687	688	683	683	680	678	674	675	675	676	680	683	702	692	683	677	673	668	667
20	664	666	663	665	663	663	657	655	657	655	660	664	685	674	665	658	647	649	642
25	635	634	638	636	640	635	635	630	634	628	637	634	659	649	635	633	623	624	619
30	600	601	607	606	612	607	607	601	605	599	606	604	626	618	605	602	593	594	590
35	559	563	569	571	578	574	574	567	570	565	569	567	591	582	569	566	558	560	558
40	511	517	526	529	539	535	536	528	530	524	528	526	550	541	529	525	517	521	520
45	456	465	475	481	493	491	491	483	484	477	480	479	504	494	485	479	473	476	476
50	392	405	418	427	441	440	440	433	432	426	427	424	454	443	436	428	424	425	423
55	321	335	352	366	382	383	382	376	375	368	365	360	391	381	379	374	369	371	369
60	248	262	279	298	317	319	319	312	313	304	297	293	321	312	314	313	308	310	306
65	202	209	209	225	243	249	249	246	243	236	230	237	260	247	245	243	242	239	238
70	177	181	169	159	171	180	179	179	176	172	183	198	216	202	190	175	175	172	169
75	140	149	145	122	111	115	114	116	116	128	151	167	183	172	154	125	114	109	105
80	91.7	101	104	95.8	75.0	66.0	65.9	66.9	76.2	99.8	117	127	148	140	128	97.7	70.4	57.7	52.0
85	52.4	60.0	62.4	61.1	53.2	36.8	34.5	36.7	53.7	67.8	72.9	77.1	97.9	93.0	89.0	71.3	48.9	27.6	18.9
90	34.2	38.6	39.5	36.8	33.9	24.0	11.5	23.4	34.7	40.8	42.8	44.8	53.0	49.5	46.4	37.7	30.5	15.0	3.97
95	31.6	34.7	35.7	32.7	30.8	20.9	2.82	19.9	29.3	32.2	33.4	33.9	32.8	31.8	29.6	25.9	21.4	12.7	3.31
100	31.8	34.4	36.1	35.6	37.5	15.9	2.94	13.5	34.5	34.5	33.9	33.5	30.2	30.5	29.3	27.9	27.8	10.4	3.23
105	35.1	37.8	41.5	42.7	28.6	11.9	3.06	6.54	34.3	41.4	37.9	35.9	32.0	32.4	32.3	34.9	29.3	5.70	3.36
110	40.9	43.1	45.1	32.6	13.6	10.3	3.40	4.13	22.2	43.0	44.1	40.8	35.8	36.5	38.0	38.4	19.0	4.20	3.79
115	40.3	40.2	35.4	22.6	8.12	3.85	3.74	4.03	11.6	32.2	42.6	44.4	40.1	40.5	39.0	28.1	11.5	4.23	4.18
120	30.4	29.5	24.3	13.3	6.12	4.11	4.10	4.28	6.99	21.1	32.5	38.1	37.2	36.2	30.4	18.6	7.24	4.51	4.82
125	22.5	21.1	15.1	9.33	5.35	4.46	4.51	4.65	5.37	12.6	23.4	29.5	29.0	27.8	21.9	12.4	5.76	4.91	5.21
130	16.0	14.6	10.9	7.27	5.01	4.84	4.92	5.04	5.30	7.91	16.2	21.7	21.7	20.5	15.4	8.07	5.56	5.33	5.57
135	11.7	10.3	8.36	6.38	5.23	5.24	5.32	5.45	5.62	6.29	9.51	14.4	15.2	14.3	10.3	6.64	5.72	5.71	5.92
140	8.82	8.14	7.15	5.89	5.62	5.66	5.73	5.86	5.99	6.14	7.11	9.09	10.2	9.65	7.87	6.28	6.04	6.08	6.17
145	7.53	7.05	6.47	6.08	6.03	6.07	6.14	6.28	6.37	6.44	6.61	7.24	8.28	7.73	7.03	6.38	6.39	6.46	6.67
150	6.97	6.66	6.60	6.48	7.19	7.49	7.16	6.90	6.81	6.84	6.90	6.87	7.20	7.02	6.77	6.70	6.75	6.84	7.08
155	7.22	7.01	6.97	6.92	7.10	7.82	7.55	7.32	7.28	7.32	7.33	7.34	7.05	7.00	7.04	7.05	7.09	7.19	7.49
160	7.52	7.36	7.32	7.27	7.37	8.03	7.85	7.70	7.67	7.71	7.82	7.97	7.36	7.31	7.37	7.38	7.41	7.51	7.91
165	7.81	7.70	7.72	7.59	7.68	7.94	8.23	8.04	8.06	8.07	8.31	8.49	7.72	7.65	7.69	7.68	7.70	7.82	8.24
170	8.08	7.98	7.96	7.86	7.94	8.06	8.61	8.38	8.40	8.40	8.70	8.94	8.01	7.93	7.96	7.93	7.96	8.07	8.45
175	8.28	8.19	8.15	8.08	8.13	8.24	8.65	9.04	8.85	8.79	9.09	9.27	8.23	8.16	8.15	8.13	8.15	8.26	8.61
180	8.39	8.30	8.26	8.23	8.26	8.35	8.70	9.16	9.51	9.69	9.48	9.61	8.40	8.29	8.26	8.22	8.26	8.37	8.67

C Range: 0 - 360DEG  
 C Interval: 15.0DEG  
 Test Speed: HIGH  
 Temperature:25.3°C  
 Operators:DAMIN  
 Test Date:2024-05-06

γ Range: 0 - 180DEG  
 γ Interval: 1.0DEG  
 Test System:EVERFINE GO-2000B\_V1 SYSTEM V2.00.471  
 Humidity:65.0%  
 Test Distance:4.880m [K=1.0000]  
 Remarks:

LUMINOUS DISTRIBUTION INTENSITY DATA

NAME: LED Strip	TYPE: Indoor lighting	WEIGHT: 75g
SPEC.: LED	DIM.: 1000*12*5MM	SERIAL No.: 20240503026
MFR.: EVERFINE	SUR.: 1000*12MM	Shielding Angle:

Table--2

UNIT: cd

C (DEG) \ γ (DEG)	285	300	315	330	345														
0	695	697	699	703	706														
5	692	693	696	700	702														
10	683	686	688	692	694														
15	669	673	674	678	677														
20	652	649	657	656	656														
25	629	627	633	626	623														
30	601	600	602	592	583														
35	567	565	562	554	533														
40	529	525	520	503	500														
45	482	474	471	445	443														
50	428	423	407	400	386														
55	371	364	341	345	334														
60	308	298	286	281	269														
65	238	220	224	200	210														
70	164	153	163	167	167														
75	97.8	108	120	139	149														
80	40.9	70.5	91.7	107	110														
85	28.1	44.6	63.0	62.8	65.7														
90	16.8	28.6	35.8	39.2	37.9														
95	13.5	21.1	26.8	27.1	31.5														
100	11.5	26.5	26.8	26.9	31.5														
105	6.36	27.0	29.1	31.8	33.3														
110	5.49	16.2	35.9	34.6	35.8														
115	5.29	8.96	23.3	34.0	38.7														
120	5.49	6.90	15.0	24.9	28.7														
125	5.79	6.82	9.70	18.1	20.8														
130	6.13	6.66	7.70	12.4	15.3														
135	6.45	6.93	7.65	9.62	11.6														
140	6.81	7.33	7.91	8.48	11.2														
145	7.21	7.74	8.23	8.64	10.3														
150	7.66	8.08	8.61	9.09	10.0														
155	7.85	8.41	8.92	9.56	10.00														
160	7.95	8.75	9.37	10.1	9.85														
165	8.66	9.07	9.90	10.4	9.58														
170	8.75	9.39	10.3	10.5	10.0														
175	8.89	9.02	10.1	10.2	10.0														
180	9.33	9.51	9.61	9.59	9.66														

C Range: 0 - 360DEG  
 C Interval: 15.0DEG  
 Test Speed: HIGH  
 Temperature:25.3°C  
 Operators:DAMIN  
 Test Date:2024-05-06

γ Range: 0 - 180DEG  
 γ Interval: 1.0DEG  
 Test System:EVERFINE GO-2000B\_V1 SYSTEM V2.00.471  
 Humidity:65.0%  
 Test Distance:4.880m [K=1.0000]  
 Remarks: