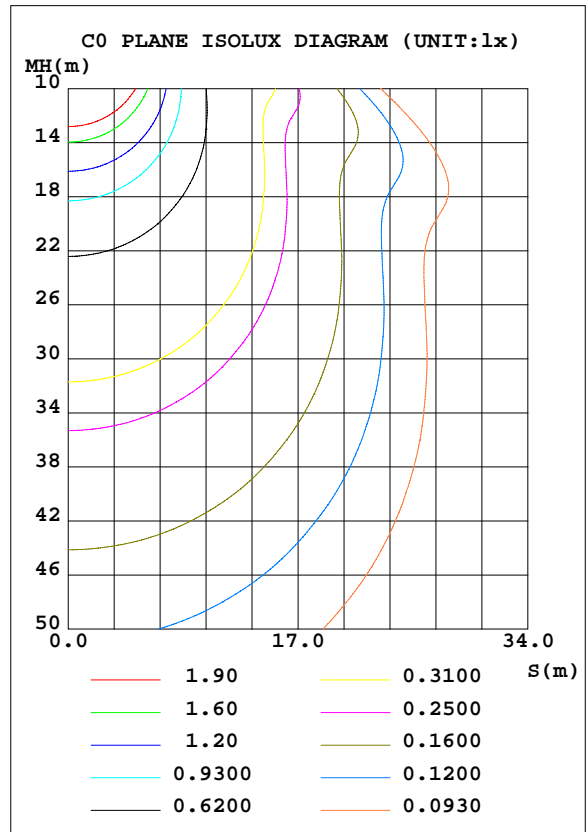
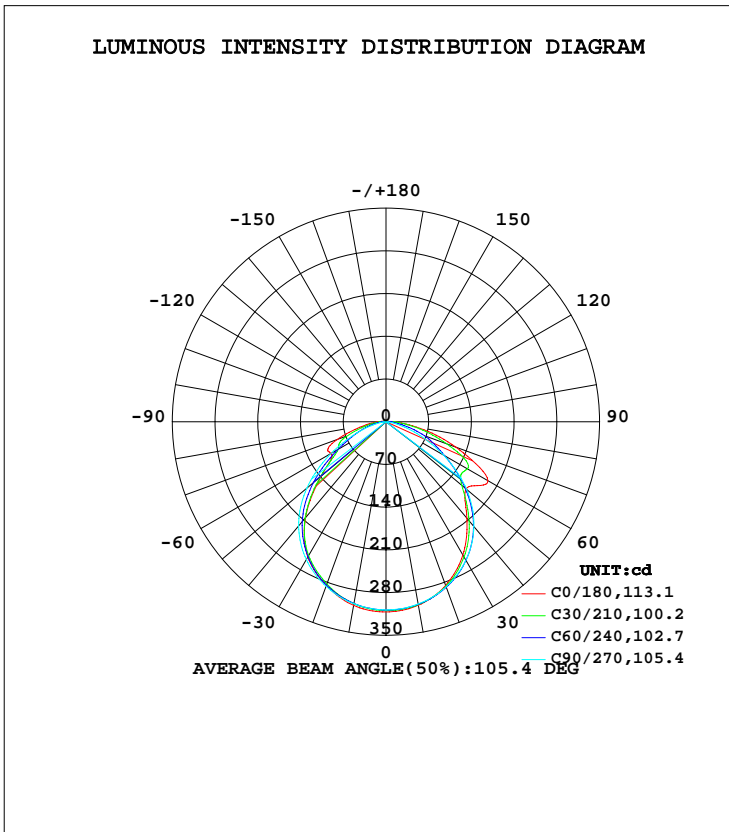


LUMINAIRE PHOTOMETRIC TEST REPORT

Test:U:12.01V I:0.9019A P:10.83W PF:1.0000 Lamp Flux:293.27x1 lm		
NAME: LED Strip	TYPE:Indoor lighting	WEIGHT:
SPEC.:2835 120LED	DIM.: 1000*10*5MM	SERIAL No.:20170114002
MFR.: Dilux	SUR.:1000*10MM	Shielding Angle:

DATA OF LAMP		PHOTOMETRIC DATA Eff: 76.55 lm/W			
MODEL	T28XX120E-12(WCP)-HR	I _{max} (cd)	312.6	S/MH(C0/180)	1.22
NOMINAL POWER(W)	10.79	LOR(%)	282.6	S/MH(C90/270)	1.26
RATED VOLTAGE(V)	DC 12	TOTAL FLUX(lm)	828.90	η UP, DN(C0-180)	1.2,140.9
NOMINAL FLUX(lm)	293.27	CIE CLASS	DIRECT	η UP, DN(C180-360)	1.3,139.2
LAMPS INSIDE	1	η up(%)	2.6	CIBSE SHR NOM	1.25
TEST VOLTAGE(V)	12	η down(%)	280.1	CIBSE SHR MAX	1.35



C Range: 0 - 360DEG
 C Interval: 10.0DEG
 Test Speed: HIGH
 Temperature:25.3DEG
 Operators:DAMIN
 Test Date:2017-01-14

γ Range: 0 - 180DEG
 γ Interval: 1.0DEG
 Test System:EVERFINE GO-2000B_V1 SYSTEM V2.0.351
 Humidity:65.0%
 Test Distance:4.950m [K=1.0000]
 Remarks:

ZONAL FLUX DIAGRAM

ZONAL FLUX DIAGRAM:

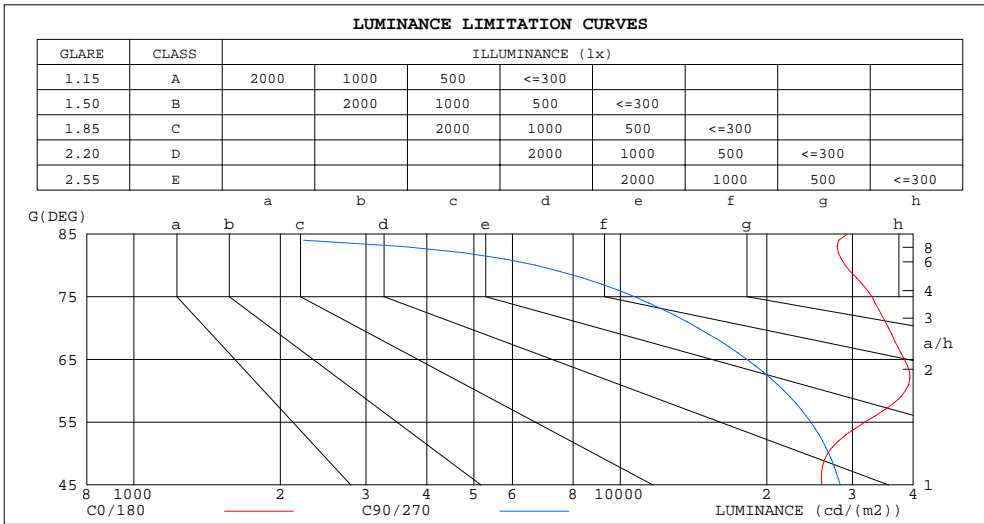
γ	C0	C45	C90	C135	C180	C225	C270	C315	γ	Φ zone	Φ total	lum, lamp
10	305.3	304.5	303.4	304.5	305.5	302.8	302.9	306.2	0- 10	29.32	29.32	3.54,10
20	285.6	288.2	288.0	285.7	285.6	283.8	287.0	290.2	10- 20	83.78	113.1	13.6,38.6
30	252.0	259.5	262.0	255.7	256.0	253.7	260.9	262.3	20- 30	126.1	239.2	28.9,81.5
40	206.3	217.5	224.3	212.3	205.2	209.9	222.7	221.0	30- 40	148.7	387.8	46.8,132
50	171.5	164.0	172.4	150.6	138.3	147.6	169.3	168.0	40- 50	144.7	532.6	64.3,182
60	192.8	123.4	108.5	90.33	103.9	87.70	103.8	122.8	50- 60	122.0	654.6	79,223
70	121.7	85.83	49.40	58.02	85.09	55.79	45.70	88.72	60- 70	96.39	751.0	90.6,256
80	50.36	33.81	11.63	24.75	36.36	23.44	10.26	36.20	70- 80	52.85	803.8	97,274
90	11.65	10.94	0	8.627	12.72	8.448	0	11.39	80- 90	17.58	821.4	99.1,280
100	3.752	4.364	0	3.440	5.401	3.728	0	4.303	90-100	5.294	826.7	99.7,282
110	1.757	0.2843	0	0.2837	3.241	0.5121	0	0.2819	100-110	1.934	828.6	100,283
120	0	0	0	0	0	0	0	0	110-120	0.2734	828.9	100,283
130	0	0	0	0	0	0	0	0	120-130	0	828.9	100,283
140	0	0	0	0	0	0	0	0	130-140	0	828.9	100,283
150	0	0	0	0	0	0	0	0	140-150	0	828.9	100,283
160	0	0	0	0	0	0	0	0	150-160	0	828.9	100,283
170	0	0	0	0	0	0	0	0	160-170	0	828.9	100,283
180	0	0	0	0	0	0	0	0	170-180	0	828.9	100,283
DEG	LUMINOUS INTENSITY:cd									UNIT:lm		

C Range: 0 - 360DEG
 C Interval: 10.0DEG
 Test Speed: HIGH
 Temperature:25.3DEG
 Operators:DAMIN
 Test Date:2017-01-14

γ Range: 0 - 180DEG
 γ Interval: 1.0DEG
 Test System:EVERFINE GO-2000B_V1 SYSTEM V2.0.351
 Humidity:65.0%
 Test Distance:4.950m [K=1.0000]
 Remarks:

LUMINANCE LIMITATION CURVES

Test:U:12.01V I:0.9019A P:10.83W PF:1.0000 Lamp Flux:293.27x1 lm		
NAME: LED Strip	TYPE:Indoor lighting	WEIGHT:
SPEC.:2835 120LED	DIM.: 1000*10*5MM	SERIAL No.:20170114002
MFR.: Dilux	SUR.:1000*10MM	Shielding Angle:



LUMINANCE cd/(m2)		
G(DEG)	C0/180	C90/270
85	29310	530
80	29003	6700
75	32878	10681
70	35573	14443
65	38391	18203
60	38552	21691
55	31839	24631
50	26685	26827
45	25943	28320

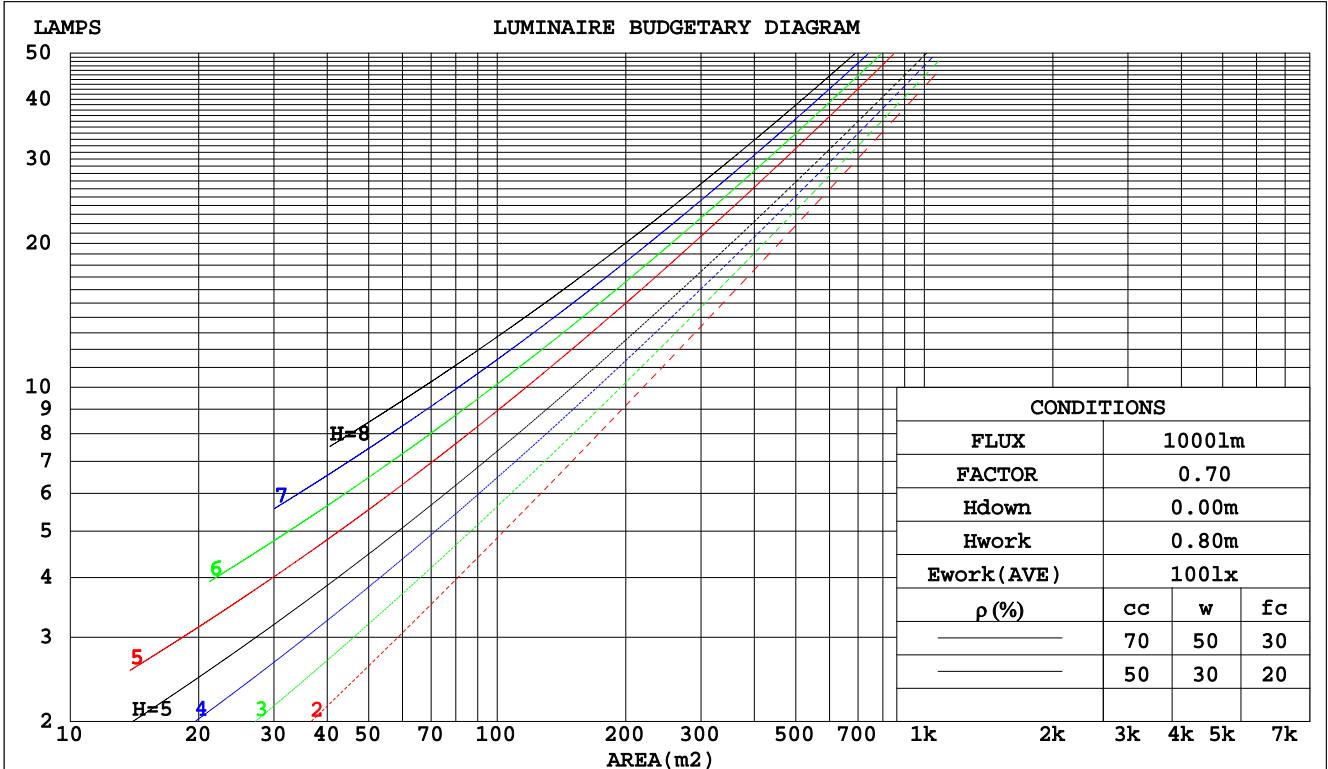
C Range: 0 - 360DEG
 C Interval: 10.0DEG
 Test Speed: HIGH
 Temperature:25.3DEG
 Operators:DAMIN
 Test Date:2017-01-14

γ Range: 0 - 180DEG
 γ Interval: 1.0DEG
 Test System:EVERFINE GO-2000B_V1 SYSTEM V2.0.351
 Humidity:65.0%
 Test Distance:4.950m [K=1.0000]
 Remarks:

CU AND LUMINAIRE BUDGETARY ESTIMATE DIAGRAM

Test:U:12.01V I:0.9019A P:10.83W PF:1.0000 Lamp Flux:293.27x1 lm		
NAME: LED Strip	TYPE:Indoor lighting	WEIGHT:
SPEC.:2835 120LED	DIM.: 1000*10*5MM	SERIAL No.:20170114002
MFR.: Dilux	SUR.:1000*10MM	Shielding Angle:

pcc	80%			70%			50%			30%			10%			0
	50%	30%	10%	50%	30%	10%	50%	30%	10%	50%	30%	10%	50%	30%	10%	0
pw																0
pfc	20%			20%			20%			20%			20%			0
RCR	RCR:Room Cavity Ratio															
	Coefficients of Utilization(CU)															
0.0	3.36	3.36	3.36	3.28	3.28	3.28	3.13	3.13	3.13	2.99	2.99	2.99	2.86	2.86	2.86	2.80
1.0	2.94	2.82	2.71	2.87	2.76	2.66	2.75	2.66	2.57	2.63	2.56	2.49	2.52	2.47	2.41	2.35
2.0	2.57	2.38	2.22	2.51	2.34	2.19	2.41	2.26	2.13	2.31	2.19	2.08	2.22	2.12	2.03	1.97
3.0	2.26	2.03	1.85	2.21	2.00	1.83	2.13	1.95	1.80	2.05	1.89	1.76	1.97	1.84	1.73	1.67
4.0	2.01	1.76	1.58	1.97	1.74	1.56	1.90	1.70	1.54	1.83	1.65	1.52	1.76	1.61	1.49	1.43
5.0	1.80	1.55	1.36	1.77	1.53	1.35	1.70	1.50	1.34	1.64	1.46	1.32	1.59	1.43	1.30	1.24
6.0	1.62	1.37	1.19	1.59	1.36	1.19	1.54	1.33	1.17	1.49	1.30	1.16	1.44	1.28	1.15	1.09
7.0	1.47	1.23	1.06	1.45	1.22	1.05	1.40	1.20	1.04	1.36	1.17	1.03	1.32	1.15	1.02	.97
8.0	1.35	1.11	.95	1.33	1.10	.94	1.29	1.08	.93	1.25	1.06	.93	1.22	1.05	.92	.87
9.0	1.24	1.01	.85	1.22	1.00	.85	1.19	.98	.84	1.15	.97	.84	1.12	.96	.83	.78
10.0	1.14	.92	.77	1.13	.92	.77	1.10	.90	.77	1.07	.89	.76	1.04	.88	.76	.71



C Range: 0 - 360DEG
 C Interval: 10.0DEG
 Test Speed: HIGH
 Temperature:25.3DEG
 Operators:DAMIN
 Test Date:2017-01-14

γ Range: 0 - 180DEG
 γ Interval: 1.0DEG
 Test System:EVERFINE GO-2000B_V1 SYSTEM V2.0.351
 Humidity:65.0%
 Test Distance:4.950m [K=1.0000]
 Remarks:

WEC AND CCEC

Test:U:12.01V I:0.9019A P:10.83W PF:1.0000 Lamp Flux:293.27x1 lm		
NAME: LED Strip	TYPE:Indoor lighting	WEIGHT:
SPEC.:2835 120LED	DIM.: 1000*10*5MM	SERIAL No.:20170114002
MFR.: Dilux	SUR.:1000*10MM	Shielding Angle:

ρcc	80%			70%			50%			30%			10%			0
ρw	50%	30%	10%	50%	30%	10%	50%	30%	10%	50%	30%	10%	50%	30%	10%	0
ρfc	20%			20%			20%			20%			20%			0
RCR	RCR:Room Cavity Ratio						Wall Exitance Coefficients(WEC)									
0.0																
1.0	.862	.490	.155	.842	.480	.152	.803	.461	.147	.767	.442	.142	.734	.425	.137	
2.0	.808	.443	.136	.790	.435	.134	.756	.420	.131	.724	.406	.127	.695	.393	.124	
3.0	.748	.398	.119	.732	.392	.118	.701	.380	.115	.673	.369	.113	.647	.358	.111	
4.0	.690	.359	.105	.676	.354	.105	.649	.344	.103	.624	.335	.101	.601	.327	.099	
5.0	.639	.326	.094	.626	.322	.094	.602	.314	.092	.580	.306	.091	.559	.299	.090	
6.0	.593	.297	.085	.582	.294	.085	.561	.287	.084	.541	.281	.083	.522	.275	.082	
7.0	.553	.273	.077	.543	.270	.077	.524	.265	.076	.506	.259	.075	.489	.254	.075	
8.0	.517	.252	.071	.508	.250	.071	.491	.245	.070	.474	.240	.069	.459	.236	.069	
9.0	.485	.234	.065	.477	.232	.065	.461	.228	.065	.447	.224	.064	.433	.220	.064	
10.0	.456	.219	.061	.449	.217	.060	.435	.213	.060	.422	.209	.060	.409	.206	.059	

ρcc	80%			70%			50%			30%			10%			0
ρw	50%	30%	10%	50%	30%	10%	50%	30%	10%	50%	30%	10%	50%	30%	10%	0
ρfc	20%			20%			20%			20%			20%			0
RCR	RCR:Room Cavity Ratio						Ceiling Cavity Exitance Coefficients(CCEC)									
0.0	.558	.558	.558	.477	.477	.477	.325	.325	.325	.187	.187	.187	.060	.060	.060	
1.0	.528	.461	.400	.452	.396	.345	.309	.272	.238	.178	.158	.139	.057	.051	.045	
2.0	.504	.393	.299	.432	.338	.258	.296	.234	.180	.171	.136	.106	.055	.044	.034	
3.0	.482	.343	.232	.413	.296	.201	.284	.205	.141	.164	.120	.083	.053	.039	.027	
4.0	.460	.305	.187	.395	.264	.162	.271	.184	.114	.157	.108	.068	.051	.035	.022	
5.0	.439	.276	.155	.377	.238	.135	.260	.167	.095	.150	.098	.057	.048	.032	.019	
6.0	.419	.252	.132	.360	.218	.115	.248	.153	.081	.144	.090	.048	.046	.029	.016	
7.0	.399	.232	.115	.344	.201	.100	.237	.141	.071	.138	.083	.042	.045	.027	.014	
8.0	.381	.216	.102	.328	.187	.089	.227	.132	.063	.132	.078	.038	.043	.025	.012	
9.0	.364	.202	.092	.314	.175	.081	.217	.123	.057	.127	.073	.034	.041	.024	.011	
10.0	.348	.190	.084	.300	.165	.074	.208	.116	.052	.122	.069	.031	.039	.023	.010	

C Range: 0 - 360DEG
 C Interval: 10.0DEG
 Test Speed: HIGH
 Temperature:25.3DEG
 Operators:DAMIN
 Test Date:2017-01-14

γ Range: 0 - 180DEG
 γ Interval: 1.0DEG
 Test System:EVERFINE GO-2000B_V1 SYSTEM V2.0.351
 Humidity:65.0%
 Test Distance:4.950m [K=1.0000]
 Remarks:

UGR(Unified Glare Rating) Table

Test:U:12.01V I:0.9019A P:10.83W PF:1.0000 Lamp Flux:293.27x1 lm										
NAME: LED Strip					TYPE:Indoor lighting			WEIGHT:		
SPEC.:2835 120LED					DIM.: 1000*10*5MM			SERIAL No.:20170114002		
MFR.: Dilux					SUR.:1000*10MM			Shielding Angle:		
ceiling/cavity	0.7	0.7	0.5	0.5	0.3	0.7	0.7	0.5	0.5	0.3
walls	0.5	0.3	0.5	0.3	0.3	0.5	0.3	0.5	0.3	0.3
working plane	0.2	0.2	0.2	0.2	0.2	0.2	0.2	0.2	0.2	0.2
Room dimensions	Viewed crosswise					Viewed endwise				
x = 2H y = 2H	25.6	27.1	25.9	27.3	27.6	23.7	25.2	24.0	25.4	25.6
3H	27.8	29.2	28.1	29.4	29.7	24.6	26.0	24.9	26.2	26.5
4H	28.6	29.9	28.9	30.2	30.4	24.9	26.2	25.2	26.4	26.7
6H	29.1	30.3	29.5	30.6	30.9	24.9	26.2	25.3	26.4	26.7
8H	29.3	30.5	29.6	30.8	31.1	24.9	26.1	25.3	26.4	26.7
12H	29.4	30.6	29.8	30.9	31.2	24.9	26.0	25.2	26.3	26.6
4H 2H	26.1	27.4	26.4	27.6	27.9	24.5	25.8	24.8	26.1	26.3
3H	28.4	29.6	28.8	29.9	30.2	25.6	26.8	26.0	27.1	27.4
4H	29.3	30.4	29.7	30.7	31.1	26.0	27.0	26.4	27.4	27.7
6H	30.0	31.0	30.4	31.3	31.7	26.1	27.1	26.5	27.4	27.8
8H	30.3	31.1	30.7	31.5	31.9	26.1	27.0	26.6	27.4	27.8
12H	30.5	31.3	30.9	31.7	32.1	26.1	26.9	26.6	27.3	27.7
8H 4H	29.4	30.3	29.9	30.7	31.1	26.5	27.3	26.9	27.7	28.1
6H	30.3	31.0	30.8	31.4	31.9	26.8	27.5	27.2	27.9	28.3
8H	30.7	31.3	31.1	31.7	32.2	26.8	27.5	27.3	27.9	28.4
12H	31.0	31.5	31.5	32.0	32.5	26.8	27.4	27.3	27.8	28.3
12H 4H	29.4	30.2	29.9	30.6	31.0	26.5	27.3	27.0	27.7	28.2
6H	30.3	30.9	30.8	31.4	31.9	26.9	27.5	27.4	28.0	28.5
8H	30.7	31.3	31.2	31.7	32.2	27.0	27.6	27.5	28.0	28.5
Variations with the observer position at spacings:										
S = 1.0H	+ 0.2 / - 0.2					+ 0.2 / - 0.3				
1.5H	+ 0.2 / - 0.2					+ 0.2 / - 0.3				
2.0H	+ 0.5 / - 0.6					+ 0.5 / - 0.5				

CIE Pub.117 Corrected 293.3 lm Total Lamp Luminous Flux. (8log(F/F0) = -4.3)

C Range: 0 - 360DEG
 C Interval: 10.0DEG
 Test Speed: HIGH
 Temperature:25.3DEG
 Operators:DAMIN
 Test Date:2017-01-14

γ Range: 0 - 180DEG
 γ Interval: 1.0DEG
 Test System:EVERFINE GO-2000B_V1 SYSTEM V2.0.351
 Humidity:65.0%
 Test Distance:4.950m [K=1.0000]
 Remarks:

UTILIZATION FACTORS TABLE

Test:U:12.01V I:0.9019A P:10.83W PF:1.0000 Lamp Flux:293.27x1 lm		
NAME: LED Strip	TYPE:Indoor lighting	WEIGHT:
SPEC.:2835 120LED	DIM.: 1000*10*5MM	SERIAL No.:20170114002
MFR.: Dilux	SUR.:1000*10MM	Shielding Angle:

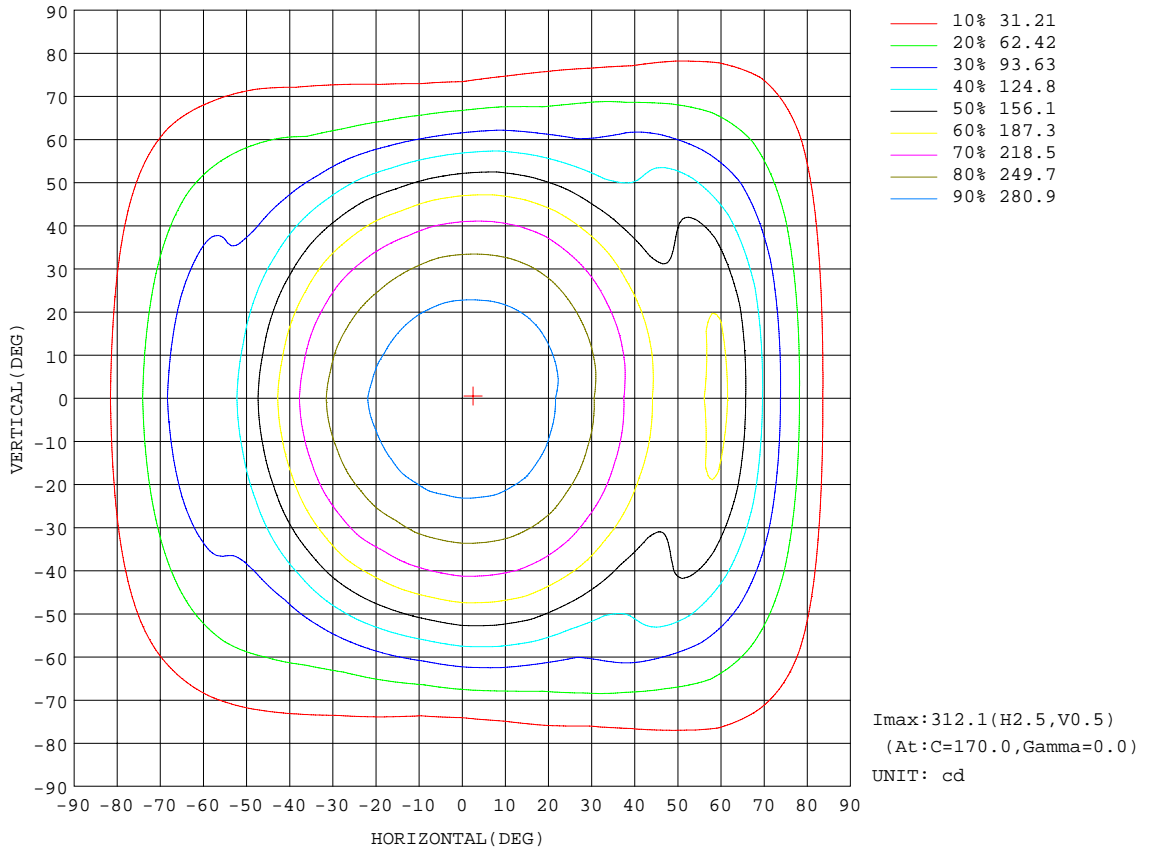
REFLECTANCE										
Ceiling	0.8	0.8	0.8	0.7	0.7	0.7	0.5	0.5	0.5	0
Walls	0.7	0.5	0.3	0.7	0.5	0.3	0.7	0.5	0.3	0
Working plane	0.2	0.2	0.2	0.2	0.2	0.2	0.2	0.2	0.2	0
ROOM INDEX	UTILIZATION FACTORS(PERCENT) k(RI) x RCR = 5									
k = 0.60	166	134	115	164	134	115	161	132	114	97
0.80	194	162	142	191	161	141	186	159	140	121
1.00	217	187	166	214	185	166	207	188	164	144
1.25	237	208	188	233	206	187	225	201	184	164
1.50	250	223	204	246	220	202	237	215	199	178
2.00	269	245	227	264	242	225	254	236	221	199
2.50	280	258	241	274	254	239	263	247	233	210
3.00	289	270	255	283	265	251	271	257	245	221
4.00	300	284	271	293	279	267	281	269	259	234
5.00	307	293	282	300	288	277	287	277	269	242
ROOM INDEX	UF(total)									Direct
According to DIN EN 13032-2 2004			Suspended				SHRNOM = 1.25			

C Range: 0 - 360DEG
 C Interval: 10.0DEG
 Test Speed: HIGH
 Temperature:25.3DEG
 Operators:DAMIN
 Test Date:2017-01-14

γ Range: 0 - 180DEG
 γ Interval: 1.0DEG
 Test System:EVERFINE GO-2000B_V1 SYSTEM V2.0.351
 Humidity:65.0%
 Test Distance:4.950m [K=1.0000]
 Remarks:

ISOCANDELA DIAGRAM

Test:U:12.01V I:0.9019A P:10.83W PF:1.0000 Lamp Flux:293.27x1 lm		
NAME: LED Strip	TYPE:Indoor lighting	WEIGHT:
SPEC.:2835 120LED	DIM.: 1000*10*5MM	SERIAL No.:20170114002
MFR.: Dilux	SUR.:1000*10MM	Shielding Angle:

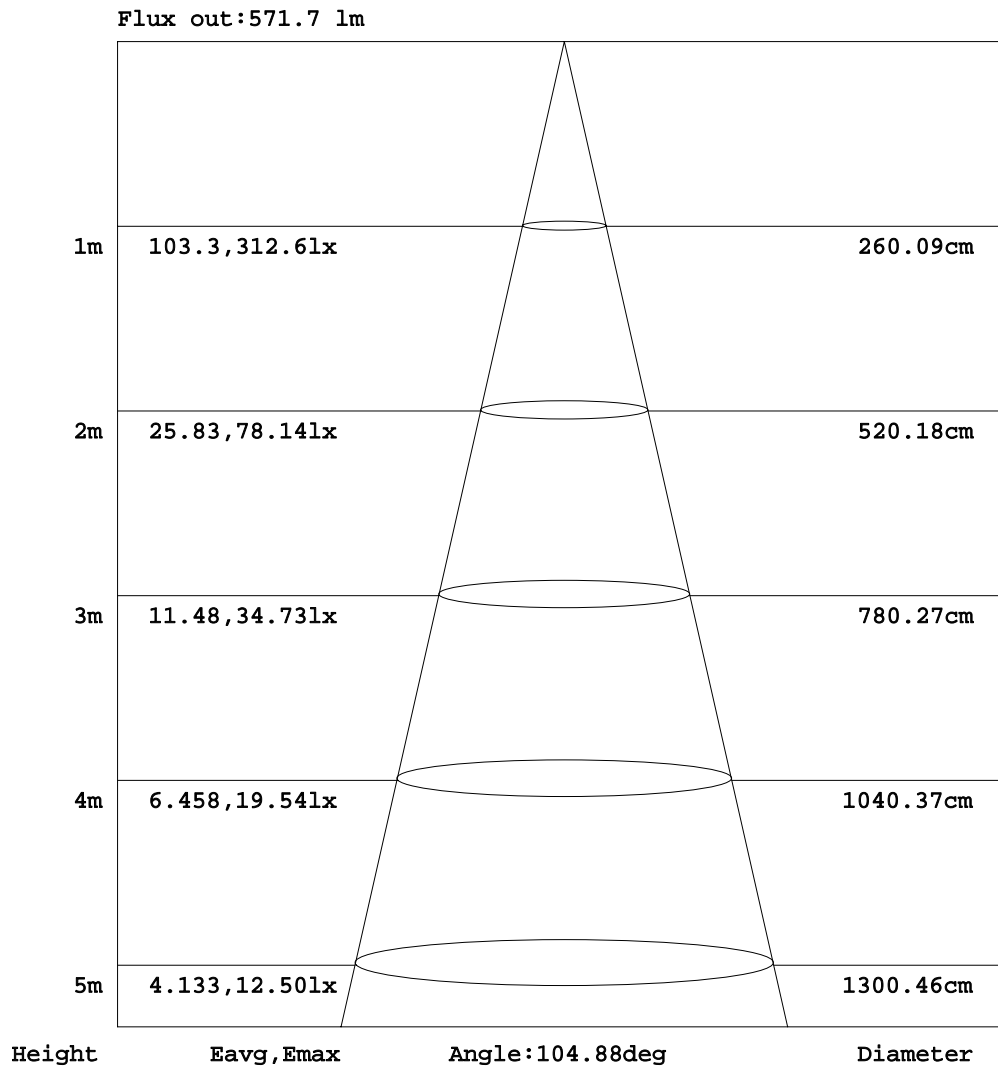


C Range: 0 - 360DEG
 C Interval: 10.0DEG
 Test Speed: HIGH
 Temperature: 25.3DEG
 Operators: DAMIN
 Test Date: 2017-01-14

γ Range: 0 - 180DEG
 γ Interval: 1.0DEG
 Test System: EVERFINE GO-2000B_V1 SYSTEM V2.0.351
 Humidity: 65.0%
 Test Distance: 4.950m [K=1.0000]
 Remarks:

AAI Figure

Test:U:12.01V I:0.9019A P:10.83W PF:1.0000 Lamp Flux:293.27x1 lm		
NAME: LED Strip	TYPE:Indoor lighting	WEIGHT:
SPEC.:2835 120LED	DIM.: 1000*10*5MM	SERIAL No.:20170114002
MFR.: Dilux	SUR.:1000*10MM	Shielding Angle:



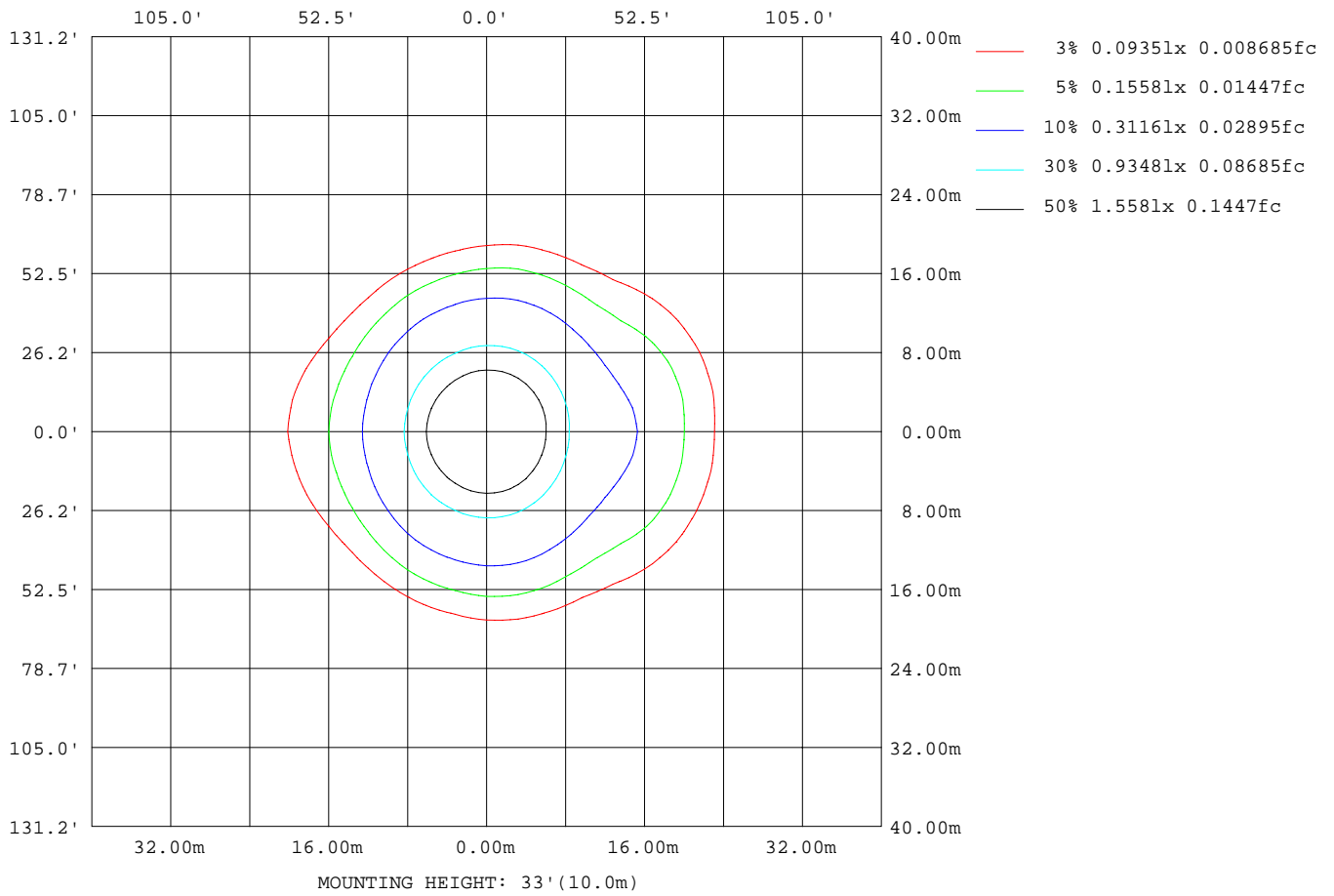
Note:The Curves indicate the illuminated area and the average illumination when the luminaire is at different distance.

C Range: 0 - 360DEG
 C Interval: 10.0DEG
 Test Speed: HIGH
 Temperature:25.3DEG
 Operators:DAMIN
 Test Date:2017-01-14

γ Range: 0 - 180DEG
 γ Interval: 1.0DEG
 Test System:EVERFINE GO-2000B_V1 SYSTEM V2.0.351
 Humidity:65.0%
 Test Distance:4.950m [K=1.0000]
 Remarks:

ISOLUX DIAGRAM

Test:U:12.01V I:0.9019A P:10.83W PF:1.0000 Lamp Flux:293.27x1 lm		
NAME: LED Strip	TYPE:Indoor lighting	WEIGHT:
SPEC.:2835 120LED	DIM.: 1000*10*5MM	SERIAL No.:20170114002
MFR.: Dilux	SUR.:1000*10MM	Shielding Angle:



C Range: 0 - 360DEG
 C Interval: 10.0DEG
 Test Speed: HIGH
 Temperature:25.3DEG
 Operators:DAMIN
 Test Date:2017-01-14

γ Range: 0 - 180DEG
 γ Interval: 1.0DEG
 Test System:EVERFINE GO-2000B_V1 SYSTEM V2.0.351
 Humidity:65.0%
 Test Distance:4.950m [K=1.0000]
 Remarks:

LED Avg.L Report

Test:U:12.01V I:0.9019A P:10.83W PF:1.0000 Lamp Flux:293.27x1 lm		
NAME: LED Strip	TYPE:Indoor lighting	WEIGHT:
SPEC.:2835 120LED	DIM.: 1000*10*5MM	SERIAL No.:20170114002
MFR.: Dilux	SUR.:1000*10MM	Shielding Angle:

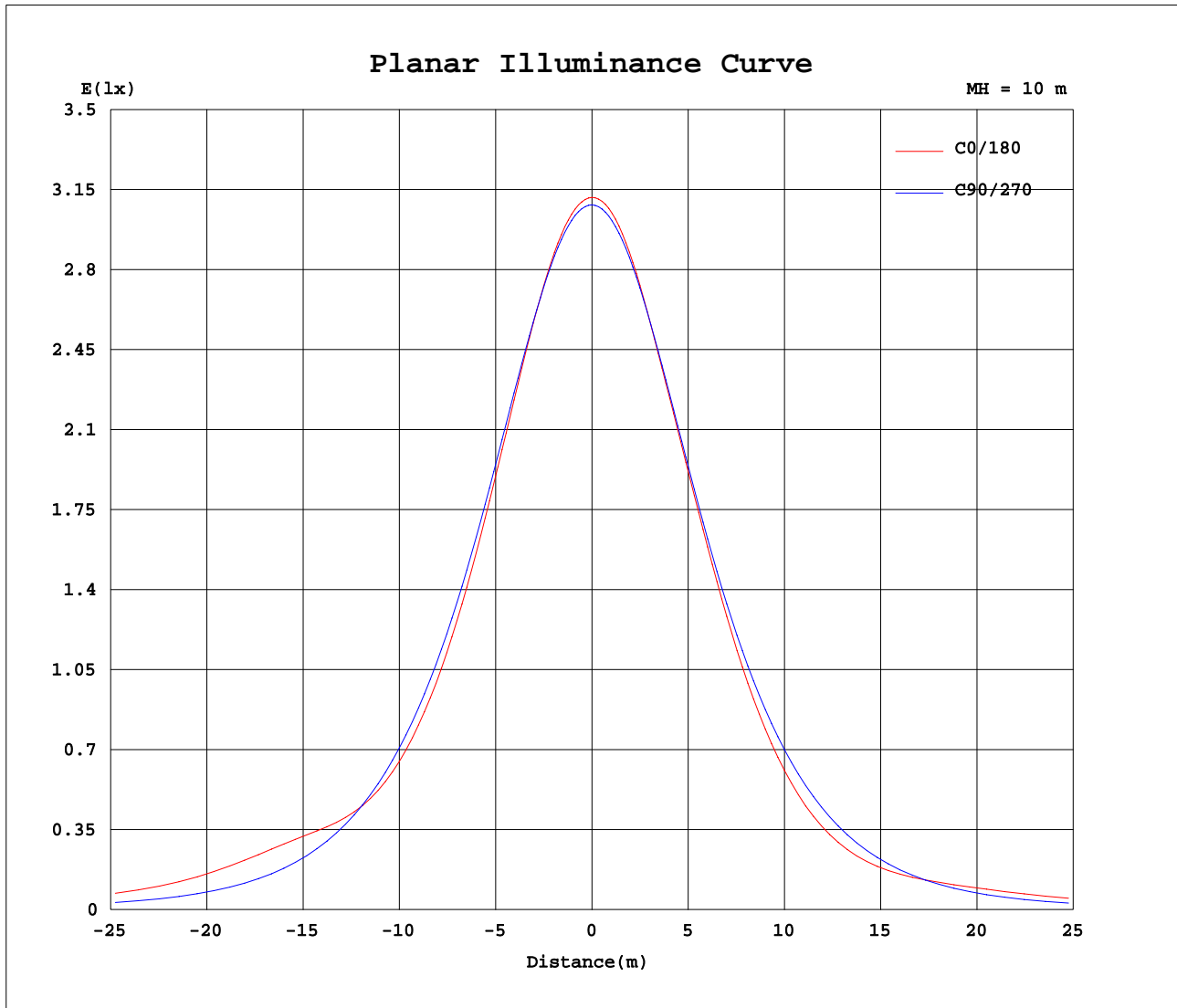
AvgL	cd/m2
L_0~180(65)av	31610
L_0~180(75)av	27603
L_0~180(85)av	27201
L_90~270(65)av	17641
L_90~270(75)av	10245
L_90~270(85)av	274
L_45(65)av	21646
L_45(75)av	18635
L_45(85)av	19095

Standard: GB/T 29293-2012

C Range: 0 - 360DEG
 C Interval: 10.0DEG
 Test Speed: HIGH
 Temperature:25.3DEG
 Operators:DAMIN
 Test Date:2017-01-14

γ Range: 0 - 180DEG
 γ Interval: 1.0DEG
 Test System:EVERFINE GO-2000B_V1 SYSTEM V2.0.351
 Humidity:65.0%
 Test Distance:4.950m [K=1.0000]
 Remarks:

Planar Illuminance Curve



C Range: 0 - 360DEG
 C Interval: 10.0DEG
 Test Speed: HIGH
 Temperature: 25.3DEG
 Operators: DAMIN
 Test Date: 2017-01-14

γ Range: 0 - 180DEG
 γ Interval: 1.0DEG
 Test System: EVERFINE GO-2000B_V1 SYSTEM V2.0.351
 Humidity: 65.0%
 Test Distance: 4.950m [K=1.0000]
 Remarks:

LUMINOUS DISTRIBUTION INTENSITY DATA

Test:U:12.01V I:0.9019A P:10.83W PF:1.0000 Lamp Flux:293.27x1 lm		
NAME: LED Strip	TYPE:Indoor lighting	WEIGHT:
SPEC.:2835 120LED	DIM.: 1000*10*5MM	SERIAL No.:20170114002
MFR.: Dilux	SUR.:1000*10MM	Shielding Angle:

Table--1

UNIT: cd

C(DEG) γ (DEG)	0	10	20	30	40	50	60	70	80	90	100	110	120	130	140	150	160	170	180
0	312	311	310	310	309	309	309	309	308	308	308	309	310	310	311	311	312	313	312
5	310	309	309	308	308	308	308	308	307	307	307	308	308	309	309	310	310	311	310
10	305	305	304	304	304	305	304	304	304	303	303	304	304	304	305	305	305	306	305
15	297	297	297	297	298	298	298	298	297	297	296	297	297	297	297	296	296	297	297
20	286	286	286	287	288	289	289	289	288	288	287	287	287	286	285	284	284	285	286
25	270	271	271	273	275	276	277	277	277	276	275	275	273	273	271	271	271	272	273
30	252	253	254	256	258	261	262	263	262	262	260	260	257	256	255	255	254	255	256
35	230	231	232	236	238	242	244	246	245	245	243	241	238	237	235	234	232	233	234
40	206	208	209	212	215	220	223	226	225	224	221	219	215	214	210	208	205	204	205
45	183	184	184	186	189	194	198	202	201	200	196	193	189	186	180	176	172	171	172
50	172	170	166	162	162	166	170	174	174	172	167	163	159	154	147	142	138	137	138
55	183	177	165	150	140	138	139	144	144	141	135	131	127	121	114	111	109	110	112
60	193	189	176	154	131	116	110	112	112	108	102	99.0	95.2	91.4	89.3	92.0	96.7	101	104
65	162	162	154	141	122	102	87.5	82.7	80.4	76.9	71.9	70.8	69.5	70.7	76.1	84.6	93.0	99.3	105
70	122	121	115	106	92.0	79.7	67.1	58.7	53.2	49.4	46.6	48.3	50.3	55.0	61.1	69.2	75.5	80.2	85.1
75	85.1	85.3	81.0	73.9	62.1	51.6	43.3	37.8	31.6	27.6	27.5	30.7	33.3	37.4	42.0	47.4	50.5	53.6	57.8
80	50.4	51.2	49.2	45.4	37.6	30.0	23.5	19.9	15.2	11.6	13.3	16.6	19.4	23.3	26.2	28.8	30.9	33.4	36.4
85	25.5	26.3	26.1	24.7	20.7	16.4	11.8	7.78	3.72	0.46	3.17	6.73	10.3	13.6	14.9	16.5	18.0	19.8	21.9
90	11.7	12.3	12.6	12.9	11.7	10.2	7.31	3.25	0.00	0.00	0.00	1.88	5.66	8.15	9.10	9.95	10.7	11.6	12.7
95	6.00	6.32	6.61	7.01	7.00	6.56	4.64	1.08	0.00	0.00	0.00	0.00	3.02	5.25	6.29	6.89	7.24	7.57	7.98
100	3.75	3.89	4.09	4.41	4.59	4.14	2.03	0.00	0.00	0.00	0.00	0.00	0.74	2.92	3.96	4.63	4.91	5.15	5.40
105	3.08	3.16	3.18	3.15	2.69	1.69	0.00	0.00	0.00	0.00	0.00	0.00	0.00	1.03	2.52	3.35	3.76	4.01	4.16
110	1.76	1.79	1.64	1.30	0.57	0.00	0.00	0.00	0.00	0.00	0.00	0.00	0.00	0.00	0.57	1.67	2.38	2.87	3.24
115	0.42	0.41	0.15	0.00	0.00	0.00	0.00	0.00	0.00	0.00	0.00	0.00	0.00	0.00	0.00	0.00	0.36	0.84	1.29
120	0.00	0.00	0.00	0.00	0.00	0.00	0.00	0.00	0.00	0.00	0.00	0.00	0.00	0.00	0.00	0.00	0.00	0.00	0.00
125	0.00	0.00	0.00	0.00	0.00	0.00	0.00	0.00	0.00	0.00	0.00	0.00	0.00	0.00	0.00	0.00	0.00	0.00	0.00
130	0.00	0.00	0.00	0.00	0.00	0.00	0.00	0.00	0.00	0.00	0.00	0.00	0.00	0.00	0.00	0.00	0.00	0.00	0.00
135	0.00	0.00	0.00	0.00	0.00	0.00	0.00	0.00	0.00	0.00	0.00	0.00	0.00	0.00	0.00	0.00	0.00	0.00	0.00
140	0.00	0.00	0.00	0.00	0.00	0.00	0.00	0.00	0.00	0.00	0.00	0.00	0.00	0.00	0.00	0.00	0.00	0.00	0.00
145	0.00	0.00	0.00	0.00	0.00	0.00	0.00	0.00	0.00	0.00	0.00	0.00	0.00	0.00	0.00	0.00	0.00	0.00	0.00
150	0.00	0.00	0.00	0.00	0.00	0.00	0.00	0.00	0.00	0.00	0.00	0.00	0.00	0.00	0.00	0.00	0.00	0.00	0.00
155	0.00	0.00	0.00	0.00	0.00	0.00	0.00	0.00	0.00	0.00	0.00	0.00	0.00	0.00	0.00	0.00	0.00	0.00	0.00
160	0.00	0.00	0.00	0.00	0.00	0.00	0.00	0.00	0.00	0.00	0.00	0.00	0.00	0.00	0.00	0.00	0.00	0.00	0.00
165	0.00	0.00	0.00	0.00	0.00	0.00	0.00	0.00	0.00	0.00	0.00	0.00	0.00	0.00	0.00	0.00	0.00	0.00	0.00
170	0.00	0.00	0.00	0.00	0.00	0.00	0.00	0.00	0.00	0.00	0.00	0.00	0.00	0.00	0.00	0.00	0.00	0.00	0.00
175	0.00	0.00	0.00	0.00	0.00	0.00	0.00	0.00	0.00	0.00	0.00	0.00	0.00	0.00	0.00	0.00	0.00	0.00	0.00
180	0.00	0.00	0.00	0.00	0.00	0.00	0.00	0.00	0.00	0.00	0.00	0.00	0.00	0.00	0.00	0.00	0.00	0.00	0.00

C Range: 0 - 360DEG
 C Interval: 10.0DEG
 Test Speed: HIGH
 Temperature:25.3DEG
 Operators:DAMIN
 Test Date:2017-01-14

γ Range: 0 - 180DEG
 γ Interval: 1.0DEG
 Test System:EVERFINE GO-2000B_V1 SYSTEM V2.0.351
 Humidity:65.0%
 Test Distance:4.950m [K=1.0000]
 Remarks:

LUMINOUS DISTRIBUTION INTENSITY DATA

Test:U:12.01V I:0.9019A P:10.83W PF:1.0000 Lamp Flux:293.27x1 lm		
NAME: LED Strip	TYPE:Indoor lighting	WEIGHT:
SPEC.:2835 120LED	DIM.: 1000*10*5MM	SERIAL No.:20170114002
MFR.: Dilux	SUR.:1000*10MM	Shielding Angle:

Table--2

UNIT: cd

C(DEG) γ (DEG)	190	200	210	220	230	240	250	260	270	280	290	300	310	320	330	340	350		
0	311	310	310	309	309	309	309	308	308	308	309	310	310	311	311	312	313		
5	309	308	308	308	307	307	307	307	307	307	308	309	309	310	310	311	311		
10	304	304	303	303	303	302	302	303	303	303	304	305	306	307	307	307	307		
15	296	295	295	295	295	295	295	296	296	297	298	299	299	300	300	299	299		
20	284	284	283	283	284	285	286	287	287	288	289	290	290	290	290	289	288		
25	271	271	270	270	270	272	273	275	275	276	277	278	278	278	276	275	274		
30	254	254	253	254	254	256	258	260	261	262	263	263	263	261	259	258	256		
35	232	232	232	234	234	236	238	242	244	245	246	246	244	242	239	237	234		
40	203	205	206	209	211	214	216	220	223	225	226	226	222	220	216	213	210		
45	170	173	174	179	182	187	189	194	198	201	202	201	197	194	190	189	187		
50	137	138	140	146	150	156	158	164	169	173	174	173	169	167	165	168	171		
55	110	109	110	113	117	122	126	132	137	143	144	143	140	143	150	163	177		
60	102	96.1	90.4	87.8	87.6	91.2	93.7	98.1	104	110	112	113	116	129	152	174	190		
65	101	94.7	84.6	74.6	67.5	65.8	65.6	67.8	72.2	78.5	81.7	87.2	100	122	144	160	167		
70	81.2	75.6	67.5	59.4	52.2	47.1	43.9	43.5	45.7	51.6	57.0	67.1	80.9	96.5	110	121	126		
75	54.3	50.9	45.7	40.4	34.4	30.9	27.5	25.3	25.4	30.7	36.9	45.0	53.3	65.8	77.5	86.5	89.1		
80	34.0	31.6	28.0	25.3	21.6	18.1	14.8	12.0	10.3	14.9	19.7	24.9	31.3	41.1	48.8	54.1	54.1		
85	20.4	18.4	16.1	14.6	12.6	9.83	5.99	2.66	0.01	3.63	7.64	12.3	17.0	22.7	26.9	29.1	28.2		
90	11.8	10.9	9.68	9.03	7.87	5.60	1.83	0.00	0.00	0.00	2.63	7.22	10.2	12.6	13.7	14.1	13.1		
95	7.69	7.41	6.92	6.45	5.36	3.27	0.00	0.00	0.00	0.00	0.44	4.43	6.50	7.35	7.35	7.18	6.63		
100	5.27	5.14	4.76	4.27	3.19	1.19	0.00	0.00	0.00	0.00	0.00	1.54	3.98	4.63	4.42	4.23	4.00		
105	4.13	4.00	3.62	2.93	1.48	0.00	0.00	0.00	0.00	0.00	0.00	1.32	2.75	3.20	3.34	3.28			
110	3.08	2.74	1.98	1.02	0.00	0.00	0.00	0.00	0.00	0.00	0.00	0.00	0.00	0.56	1.36	1.82	1.95		
115	1.10	0.73	0.08	0.00	0.00	0.00	0.00	0.00	0.00	0.00	0.00	0.00	0.00	0.00	0.00	0.29	0.53		
120	0.00	0.00	0.00	0.00	0.00	0.00	0.00	0.00	0.00	0.00	0.00	0.00	0.00	0.00	0.00	0.00	0.00		
125	0.00	0.00	0.00	0.00	0.00	0.00	0.00	0.00	0.00	0.00	0.00	0.00	0.00	0.00	0.00	0.00	0.00		
130	0.00	0.00	0.00	0.00	0.00	0.00	0.00	0.00	0.00	0.00	0.00	0.00	0.00	0.00	0.00	0.00	0.00		
135	0.00	0.00	0.00	0.00	0.00	0.00	0.00	0.00	0.00	0.00	0.00	0.00	0.00	0.00	0.00	0.00	0.00		
140	0.00	0.00	0.00	0.00	0.00	0.00	0.00	0.00	0.00	0.00	0.00	0.00	0.00	0.00	0.00	0.00	0.00		
145	0.00	0.00	0.00	0.00	0.00	0.00	0.00	0.00	0.00	0.00	0.00	0.00	0.00	0.00	0.00	0.00	0.00		
150	0.00	0.00	0.00	0.00	0.00	0.00	0.00	0.00	0.00	0.00	0.00	0.00	0.00	0.00	0.00	0.00	0.00		
155	0.00	0.00	0.00	0.00	0.00	0.00	0.00	0.00	0.00	0.00	0.00	0.00	0.00	0.00	0.00	0.00	0.00		
160	0.00	0.00	0.00	0.00	0.00	0.00	0.00	0.00	0.00	0.00	0.00	0.00	0.00	0.00	0.00	0.00	0.00		
165	0.00	0.00	0.00	0.00	0.00	0.00	0.00	0.00	0.00	0.00	0.00	0.00	0.00	0.00	0.00	0.00	0.00		
170	0.00	0.00	0.00	0.00	0.00	0.00	0.00	0.00	0.00	0.00	0.00	0.00	0.00	0.00	0.00	0.00	0.00		
175	0.00	0.00	0.00	0.00	0.00	0.00	0.00	0.00	0.00	0.00	0.00	0.00	0.00	0.00	0.00	0.00	0.00		
180	0.00	0.00	0.00	0.00	0.00	0.00	0.00	0.00	0.00	0.00	0.00	0.00	0.00	0.00	0.00	0.00	0.00		

C Range: 0 - 360DEG
 C Interval: 10.0DEG
 Test Speed: HIGH
 Temperature:25.3DEG
 Operators:DAMIN
 Test Date:2017-01-14

γ Range: 0 - 180DEG
 γ Interval: 1.0DEG
 Test System:EVERFINE GO-2000B_V1 SYSTEM V2.0.351
 Humidity:65.0%
 Test Distance:4.950m [K=1.0000]
 Remarks: